

Full Planet, Empty Plates

Supporting Data for Chapter 2: The Ecology of Population Growth

[World Population, 1950-2010](#)

GRAPH: World Population, 1950-2010

[World Population, 1950-2010, with Projections to 2050](#)

GRAPH: World Population, 1950-2010, with Projections to 2050

[Countries with Stabilized Population, 2011](#)

[Humanity's Ecological Footprint, 1961-2007](#)

GRAPH: Humanity's Ecological Footprint, 1961-2007

[Education and Total Fertility Rates for Top and Bottom Countries Sorted by Primary School Enrollment](#)

[Female Education, Literacy, and Total Fertility Rates by Country, Latest Year](#)

GRAPH: Female Secondary Education and Total Fertility Rates, Latest Year

[Top 20 Failing States, 2012](#)

[Failed States Index Scores for 178 Countries, 2012](#)

[Demographic Indicators for Top Failing States, 2012](#)

[Social Indicators for Top Failing States, 2012](#)

[Environmental Indicators for Top Failing States, 2012](#)

[Demographic Indicators for Top Strong States, 2012](#)

[Social Indicators for Top Strong States, 2012](#)

[Environmental Indicators for Top Strong States, 2012](#)

A full listing of data for the entire book is on-line at:

http://www.earth-policy.org/books/fpep/fpep_data

This is part of a supporting dataset for Lester R. Brown, **Full Planet, Empty Plates: The New Geopolitics of Food Scarcity** (New York: W.W. Norton & Company, 2012). For more information, see Earth Policy Institute on-line at www.earth-policy.org.

World Population, 1950-2010

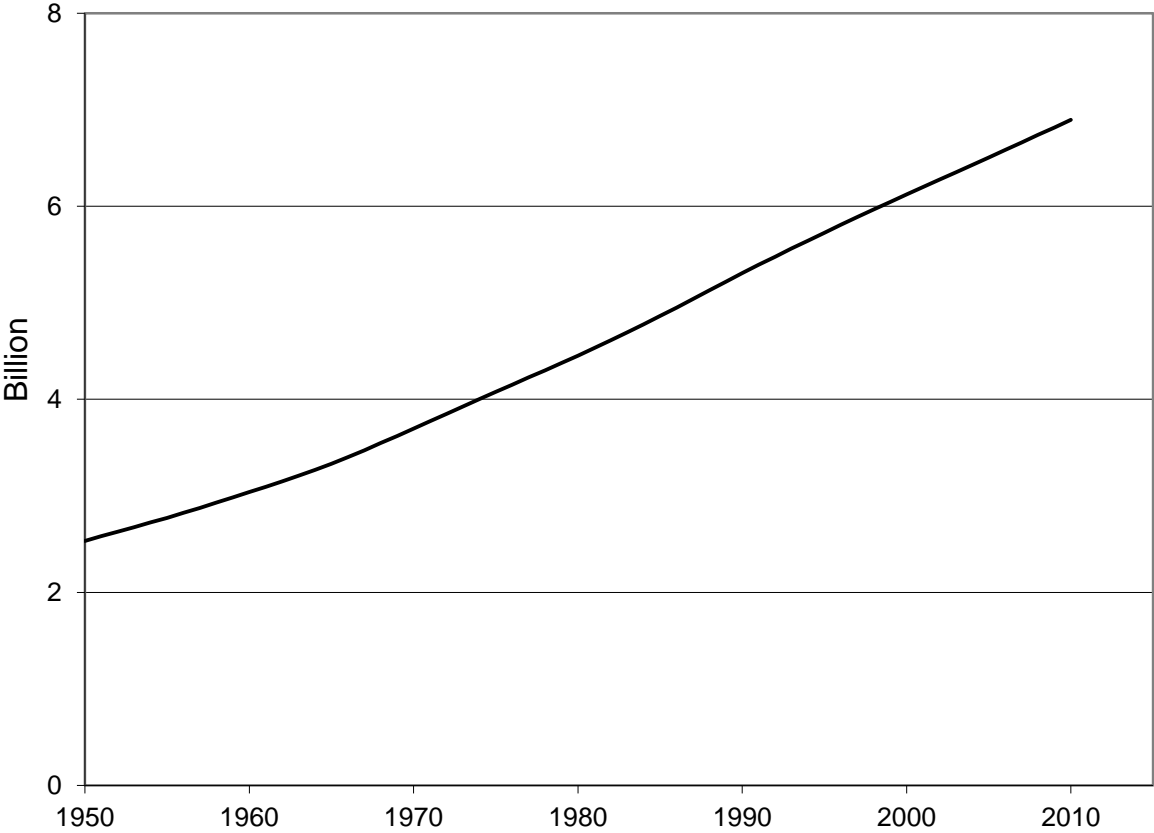
Year	Population Billion
1950	2.5
1951	2.6
1952	2.6
1953	2.7
1954	2.7
1955	2.8
1956	2.8
1957	2.9
1958	2.9
1959	3.0
1960	3.0
1961	3.1
1962	3.2
1963	3.2
1964	3.3
1965	3.3
1966	3.4
1967	3.5
1968	3.5
1969	3.6
1970	3.7
1971	3.8
1972	3.8
1973	3.9
1974	4.0
1975	4.1
1976	4.2
1977	4.2
1978	4.3
1979	4.4
1980	4.5
1981	4.5
1982	4.6
1983	4.7
1984	4.8
1985	4.9
1986	5.0
1987	5.0
1988	5.1
1989	5.2
1990	5.3
1991	5.4
1992	5.5
1993	5.6
1994	5.6
1995	5.7
1996	5.8
1997	5.9
1998	6.0
1999	6.0
2000	6.1
2001	6.2
2002	6.3
2003	6.4
2004	6.4
2005	6.5
2006	6.6
2007	6.7
2008	6.7
2009	6.8
2010	6.9

Note: Population figures from the U.N. database refer to the population estimated or projected to be reached by July 1 of each year.

Source: Compiled by Earth Policy Institute from U.N. Population Division, *World Population Prospects: The 2010 Revision*, electronic database, at esa.un.org/unpd/wpp/index.htm, updated 3 May 2011.

This is part of a supporting dataset for Lester R. Brown, **Full Planet, Empty Plates: The New Geopolitics of Food Scarcity** (New York: W.W. Norton & Company, 2012). For more information, see Earth Policy Institute on-line at www.earth-policy.org.

World Population, 1950-2010



Source: UNPop

Earth Policy Institute - www.earth-policy.org

World Population, 1950-2010, with Projections to 2050

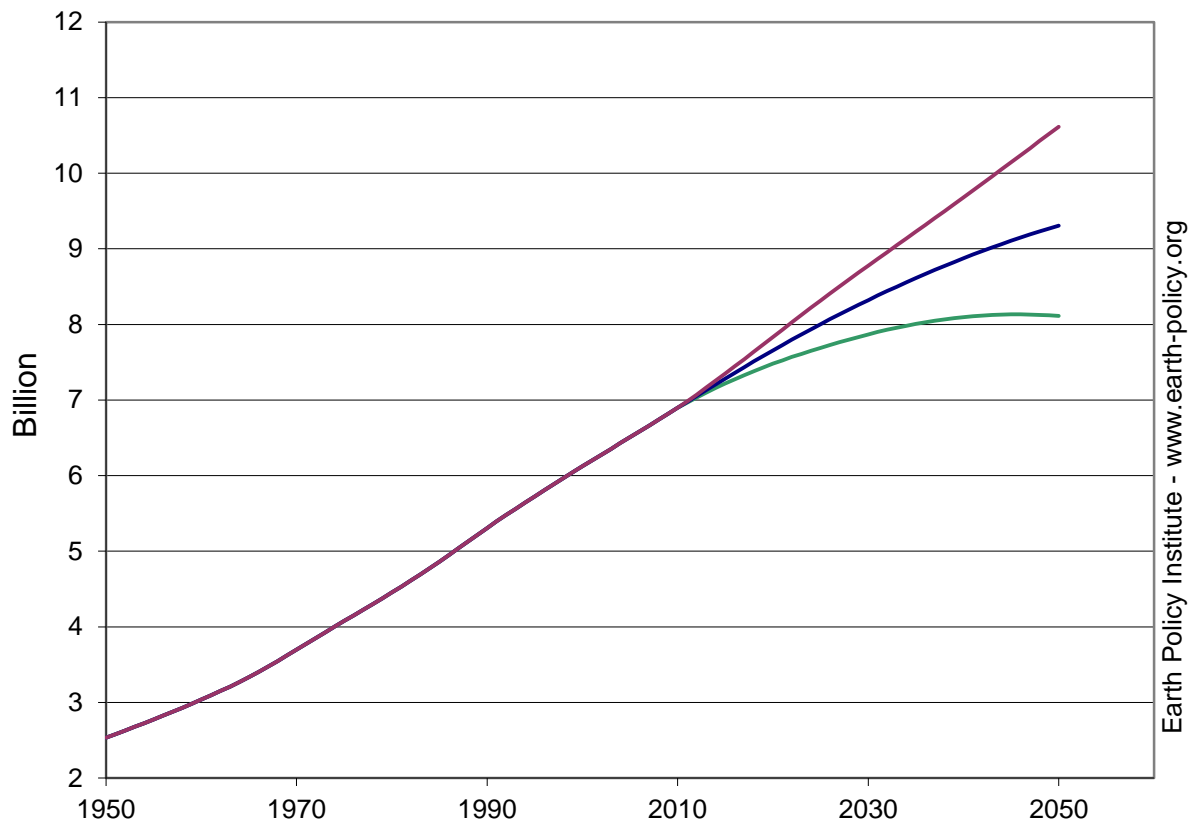
Year	Population Billion	Year	Population Projections		
			Low	Medium	High
1950	2.5	2011	7.0	7.0	7.0
1951	2.6	2012	7.0	7.1	7.1
1952	2.6	2013	7.1	7.1	7.2
1953	2.7	2014	7.2	7.2	7.3
1954	2.7	2015	7.2	7.3	7.4
1955	2.8	2016	7.3	7.4	7.4
1956	2.8	2017	7.3	7.4	7.5
1957	2.9	2018	7.4	7.5	7.6
1958	2.9	2019	7.4	7.6	7.7
1959	3.0	2020	7.5	7.7	7.8
1960	3.0	2021	7.5	7.7	7.9
1961	3.1	2022	7.6	7.8	8.0
1962	3.2	2023	7.6	7.9	8.1
1963	3.2	2024	7.7	7.9	8.2
1964	3.3	2025	7.7	8.0	8.3
1965	3.3	2026	7.7	8.1	8.4
1966	3.4	2027	7.8	8.1	8.5
1967	3.5	2028	7.8	8.2	8.6
1968	3.5	2029	7.8	8.3	8.7
1969	3.6	2030	7.9	8.3	8.8
1970	3.7	2031	7.9	8.4	8.9
1971	3.8	2032	7.9	8.4	9.0
1972	3.8	2033	8.0	8.5	9.0
1973	3.9	2034	8.0	8.6	9.1
1974	4.0	2035	8.0	8.6	9.2
1975	4.1	2036	8.0	8.7	9.3
1976	4.2	2037	8.0	8.7	9.4
1977	4.2	2038	8.1	8.8	9.5
1978	4.3	2039	8.1	8.8	9.6
1979	4.4	2040	8.1	8.9	9.7
1980	4.5	2041	8.1	8.9	9.8
1981	4.5	2042	8.1	9.0	9.9
1982	4.6	2043	8.1	9.0	10.0
1983	4.7	2044	8.1	9.1	10.1
1984	4.8	2045	8.1	9.1	10.1
1985	4.9	2046	8.1	9.1	10.2
1986	5.0	2047	8.1	9.2	10.3
1987	5.0	2048	8.1	9.2	10.4
1988	5.1	2049	8.1	9.3	10.5
1989	5.2	2050	8.1	9.3	10.6
1990	5.3				
1991	5.4				
1992	5.5				
1993	5.6				
1994	5.6				
1995	5.7				
1996	5.8				
1997	5.9				
1998	6.0				
1999	6.0				
2000	6.1				
2001	6.2				
2002	6.3				
2003	6.4				
2004	6.4				
2005	6.5				
2006	6.6				
2007	6.7				
2008	6.7				
2009	6.8				
2010	6.9				

Note: Population figures from the U.N. database refer to the population estimated or projected to be reached by July 1 of each year.

Source: Compiled by Earth Policy Institute from U.N. Population Division, *World Population Prospects: The 2010 Revision*, electronic database, at esa.un.org/unpd/wpp/index.htm, updated 3 May 2011.

This is part of a supporting dataset for Lester R. Brown, **Full Planet, Empty Plates: The New Geopolitics of Food Scarcity** (New York: W.W. Norton & Company, 2012). For more information, see Earth Policy Institute on-line at www.earth-policy.org.

World Population, 1950-2010, with Projections to 2050



Source: UNPop

Earth Policy Institute - www.earth-policy.org

Countries with Stabilized Population, 2011

Country	Rate of Natural Increase	Population
	Percent	Million
Hungary	-0.4	10.0
Ukraine	-0.4	45.7
Belarus	-0.3	9.5
Lithuania	-0.2	3.2
Germany	-0.2	81.8
Romania	-0.2	21.4
Russia	-0.2	142.8
Croatia	-0.2	4.4
Japan	-0.1	128.1
Moldova	-0.1	4.1
Italy	-0.1	60.8
Portugal	-0.1	10.7
Estonia	0.0	1.3
Austria	0.0	8.4
Monaco	0.0	0.0
Bosnia-Herzegovina	0.0	3.8
Taiwan	0.1	23.2
Czech Republic	0.1	10.5
Poland	0.1	38.2
Slovakia	0.1	5.4
Greece	0.1	11.3
Channel Islands	0.2	0.2
Denmark	0.2	5.6
Finland	0.2	5.4
Belgium	0.2	11.0
Switzerland	0.2	7.9
Malta	0.2	0.4
Slovenia	0.2	2.1
Spain	0.2	46.2
Sweden	0.3	9.4
Netherlands	0.3	16.7
Macedonia	0.3	2.1
Canada	0.4	34.5
Cuba	0.4	11.2
Puerto Rico	0.4	3.7
Armenia	0.4	3.1
Georgia	0.4	4.3
South Korea	0.4	49.0
Norway	0.4	5.0
United Kingdom	0.4	62.7
France	0.4	63.3
Luxembourg	0.4	0.5
Montenegro	0.4	0.6
San Marino	0.4	0.0
Total		970

Note: Stabilized population is defined as having a rate of natural increase between -0.4 to 0.4.

Source: Compiled by Earth Policy Institute from Population Reference Bureau, *2011 World Population Data Sheet* (Washington, DC: 2011).

This is part of a supporting dataset for Lester R. Brown, **Full Planet, Empty Plates: The New Geopolitics of Food Scarcity** (New York: W.W. Norton & Company, 2012). For more information, see Earth Policy Institute on-line at www.earth-policy.org.

Humanity's Ecological Footprint, 1961-2007

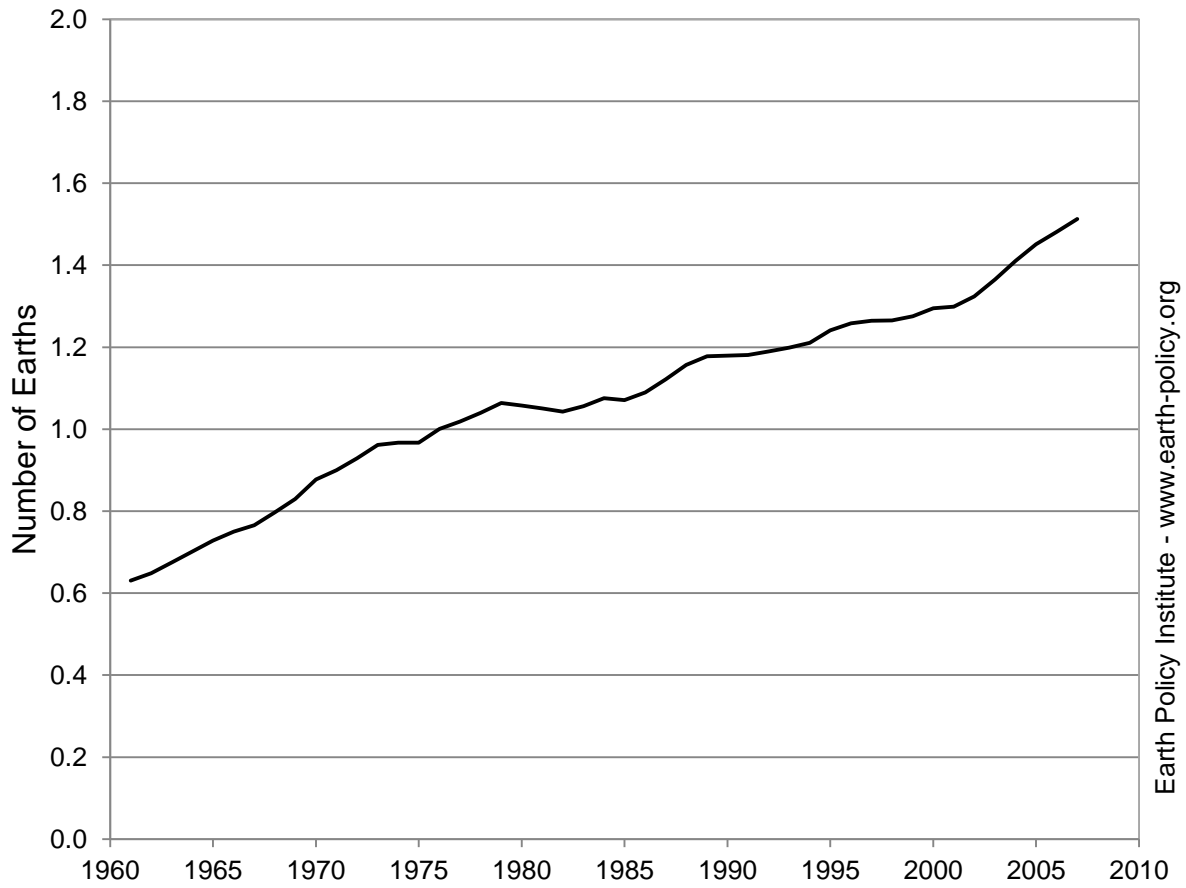
Year	Human Demands Earths Needed
1961	0.63
1962	0.65
1963	0.67
1964	0.70
1965	0.73
1966	0.75
1967	0.77
1968	0.80
1969	0.83
1970	0.88
1971	0.90
1972	0.93
1973	0.96
1974	0.97
1975	0.97
1976	1.00
1977	1.02
1978	1.04
1979	1.06
1980	1.06
1981	1.05
1982	1.04
1983	1.06
1984	1.08
1985	1.07
1986	1.09
1987	1.12
1988	1.16
1989	1.18
1990	1.18
1991	1.18
1992	1.19
1993	1.20
1994	1.21
1995	1.24
1996	1.26
1997	1.26
1998	1.26
1999	1.28
2000	1.29
2001	1.30
2002	1.32
2003	1.37
2004	1.41
2005	1.45
2006	1.48
2007	1.51

Note: The Ecological Footprint is a measure of the total demands placed on nature by humans, where a value of 1.00 means that the world economy used the equivalent of what the Earth can sustainably provide in a year (this threshold was reached in 1976). As of 2007, we are using the equivalent of 1.51 Earths—in other words, exceeding what nature can provide by half.

Source: Compiled by Earth Policy Institute from Bree Barbeau, Global Footprint Network (GFN), e-mail to J. Matthew Roney, Earth Policy Institute, 10 November 2010. More information about the Ecological Footprint concept at the GFN Web site, www.footprintnetwork.org.

This is part of a supporting dataset for Lester R. Brown, **Full Planet, Empty Plates: The New Geopolitics of Food Scarcity** (New York: W.W. Norton & Company, 2012). For more information, see Earth Policy Institute on-line at www.earth-policy.org.

Humanity's Ecological Footprint, 1961-2007



Source: Global Footprint Network

Earth Policy Institute - www.earth-policy.org

Education and Total Fertility Rates for Top and Bottom Countries Sorted by Primary School Enrollment

Top 10 Countries ¹	Primary School Enrollment ² (Latest Year)	Adult Literacy Rate ³ (Latest Year)	Total Fertility Rate ⁴ (2009)
	Percent	Percent	Number of Children per Woman
Georgia	100.0	99.7	1.6
Netherlands	100.0	-	1.8
Japan	100.0	-	1.4
Nauru	99.9	-	-
Canada	99.8	-	1.7
United Kingdom	99.8	-	2.0
Spain	99.8	97.7	1.4
Germany	99.8	-	1.4
Aruba	99.7	96.8	1.7
Ireland	99.7	-	2.1

Bottom 10 Countries ¹	Primary School Enrollment ² (Latest Year)	Adult Literacy Rate ³ (Latest Year)	Total Fertility Rate ⁴ (2009)
	Percent	Percent	Number of Children per Woman
Haiti	57.0	48.7	3.4
Equatorial Guinea	56.3	93.9	5.3
Sierra Leone	49.6	42.1	5.1
Liberia	46.5	60.8	5.3
Sudan	46.1	71.1	4.5
Djibouti	44.6	-	3.8
Eritrea	34.9	67.8	4.5
Dem. Rep. of the Congo	33.3	66.8	5.9
Afghanistan	25.7	18.2	6.4
Somalia	13.6	-	6.4

Notes:

¹ Rankings are based on a list of 198 countries for which primary enrollment data are available. Countries for which data are not available include Gibraltar, Holy See, Micronesia, Monaco, Netherlands Antilles, North Korea, Singapore, Slovakia, Turkmenistan and Tuvalu.

² Enrollment of the official age group for primary school as a percentage of the corresponding population.

³ The percentage of population aged 15 years and over who can both read and write with understanding a short simple statement on his/her everyday life.

⁴ The average number of children a woman would have at the end of her reproductive period, assuming her reproductive rate is constant throughout the period.

Source: Compiled by Earth Policy Institute from UNESCO Institute for Statistics (UIS), *Data Center*, electronic database, at stats.uis.unesco.org, viewed 7 August 2012; UIS, "Glossary," at www.uis.unesco.org/glossary/index.aspx, viewed 7 August 2012; United Nations, "Glossary of Demographic Terms," in *World Population Prospects: The 2008 Revision Population Database*, at esa.un.org/wpp/unpp, viewed 7 August 2012.

This is part of a supporting dataset for Lester R. Brown, **Full Planet, Empty Plates: The New Geopolitics of Food Scarcity** (New York: W.W. Norton & Company, 2012). For more information, see Earth Policy Institute on-line at www.earth-policy.org.

Female Education, Literacy, and Total Fertility Rates by Country, Latest Year

Country	Female Primary Enrollment	Female Secondary Enrollment	Female Adult Literacy	Total Fertility Rate
	(2000-2011) Percent	(2000-2011) Percent	(2000-2011) Percent	(2009) Children Per Woman
Afghanistan	-	13.1	-	6.4
Albania	80.1	73.3	94.7	1.6
Algeria	96.4	68.5	63.9	2.3
Andorra	79.4	74.6	-	1.2
Angola	78.2	10.9	58.1	5.6
Anguilla	93.0	76.1	-	-
Antigua and Barbuda	84.5	84.6	99.4	-
Argentina	99.0	86.6	97.8	2.2
Armenia	97.6	87.7	99.4	1.7
Aruba	99.9	74.6	96.7	1.7
Australia	97.5	86.2	-	1.9
Austria	-	-	-	1.4
Azerbaijan	84.1	77.9	99.7	2.3
Bahamas	96.2	88.5	-	1.9
Bahrain	99.6	97.0	90.2	2.6
Bangladesh	-	50.3	52.2	2.3
Barbados	97.5	87.7	-	1.5
Belarus	-	-	99.5	-
Belgium	99.2	86.5	-	1.8
Belize	90.7	65.5	-	2.8
Benin	-	12.8	30.3	5.4
Bermuda	-	51.3	-	1.8
Bhutan	90.9	57.2	38.7	2.5
Bolivia	95.8	68.7	86.8	3.4
Bosnia and Herzegovina	87.9	-	96.5	1.2
Botswana	87.9	65.4	84.9	2.8
Brazil	96.8	-	90.4	1.9
British Virgin Islands	88.3	88.7	-	-
Brunei Darussalam	-	99.4	93.6	2.1
Bulgaria	99.7	81.5	98.0	1.6
Burkina Faso	61.1	15.5	21.6	5.9
Burma (Myanmar)	-	52.3	89.9	2.0
Burundi	88.8	14.6	61.8	4.5
Cambodia	95.4	32.8	65.9	2.7
Cameroon	-	-	63.0	4.6
Canada	-	-	-	1.7
Cape Verde	92.4	70.8	79.4	2.5
Cayman Islands	86.4	78.5	99.0	-
Central African Republic	59.5	10.1	43.2	4.7
Chad	51.2	5.4	24.2	6.1
Chile	93.6	84.1	98.5	1.9
China	-	-	91.3	1.6
China, Hong Kong, SAR	97.5	76.1	-	1.0
China, Macao, SAR	84.3	74.7	90.7	1.1
Colombia	91.3	77.2	93.5	2.4
Comoros	74.8	-	69.7	5.0
Congo	89.3	-	-	4.6
Cook Islands	99.3	84.5	-	-
Costa Rica	-	-	96.4	1.9
Côte d'Ivoire	55.8	-	46.6	4.5
Croatia	97.0	93.7	98.2	1.5

Cuba	98.3	86.7	99.8	1.5
Cyprus	98.9	96.4	97.3	1.5
Czech Republic	-	-	-	1.5
Democratic Republic of the Congo	-	-	57.0	5.9
Denmark	97.1	90.8	-	1.8
Djibouti	42.2	20.2	-	3.8
Dominica	96.4	92.7	-	-
Dominican Republic	90.4	66.7	89.7	2.6
Ecuador	-	59.2	90.5	2.5
Egypt	96.3	68.6	63.5	2.8
El Salvador	95.5	58.6	82.3	2.3
Equatorial Guinea	56.0	-	90.6	5.3
Eritrea	32.5	24.9	57.5	4.5
Estonia	96.0	93.1	99.8	1.6
Ethiopia	79.5	11.2	28.9	4.4
Fiji	99.3	88.0	-	2.7
Finland	97.9	94.2	-	1.9
France	99.3	99.3	-	2.0
Gabon	-	-	84.9	3.3
Gambia	70.4	-	40.4	5.0
Georgia	94.2	79.8	99.7	1.6
Germany	-	-	-	1.4
Ghana	84.6	46.7	61.2	4.2
Gibraltar	-	-	-	-
Greece	98.7	89.8	96.1	1.5
Grenada	99.3	86.2	-	2.3
Guatemala	97.6	40.4	70.3	4.1
Guinea	70.5	22.3	30.0	5.3
Guinea-Bissau	73.3	-	40.6	5.1
Guyana	85.9	83.2	-	2.3
Haiti	-	-	44.6	3.4
Holy See	-	-	-	-
Honduras	97.0	-	84.7	3.2
Hungary	98.1	90.8	98.9	1.3
Iceland	99.6	88.6	-	2.2
India	97.6	-	50.8	2.7
Indonesia	93.5	67.0	89.7	2.1
Iran	95.7	80.2	80.7	1.7
Iraq	83.7	39.5	70.6	4.8
Ireland	100.0	99.9	-	2.1
Israel	97.3	99.9	-	3.0
Italy	98.5	94.1	98.7	1.4
Jamaica	81.4	86.8	91.4	2.4
Japan	-	99.7	-	1.4
Jordan	90.7	88.2	89.2	3.8
Kazakhstan	99.7	89.2	99.6	2.6
Kenya	84.5	48.4	84.2	4.8
Kiribati	-	72.1	-	-
Kuwait	100.0	92.6	91.8	2.3
Kyrgyzstan	95.1	78.5	99.0	2.9
Laos	95.4	38.1	63.2	2.8
Latvia	96.8	84.3	99.8	1.3
Lebanon	92.9	78.9	86.0	1.8
Lesotho	75.3	37.0	95.6	3.3
Liberia	-	-	56.8	5.3
Libya	-	-	82.7	2.6
Liechtenstein	98.5	64.3	-	1.7

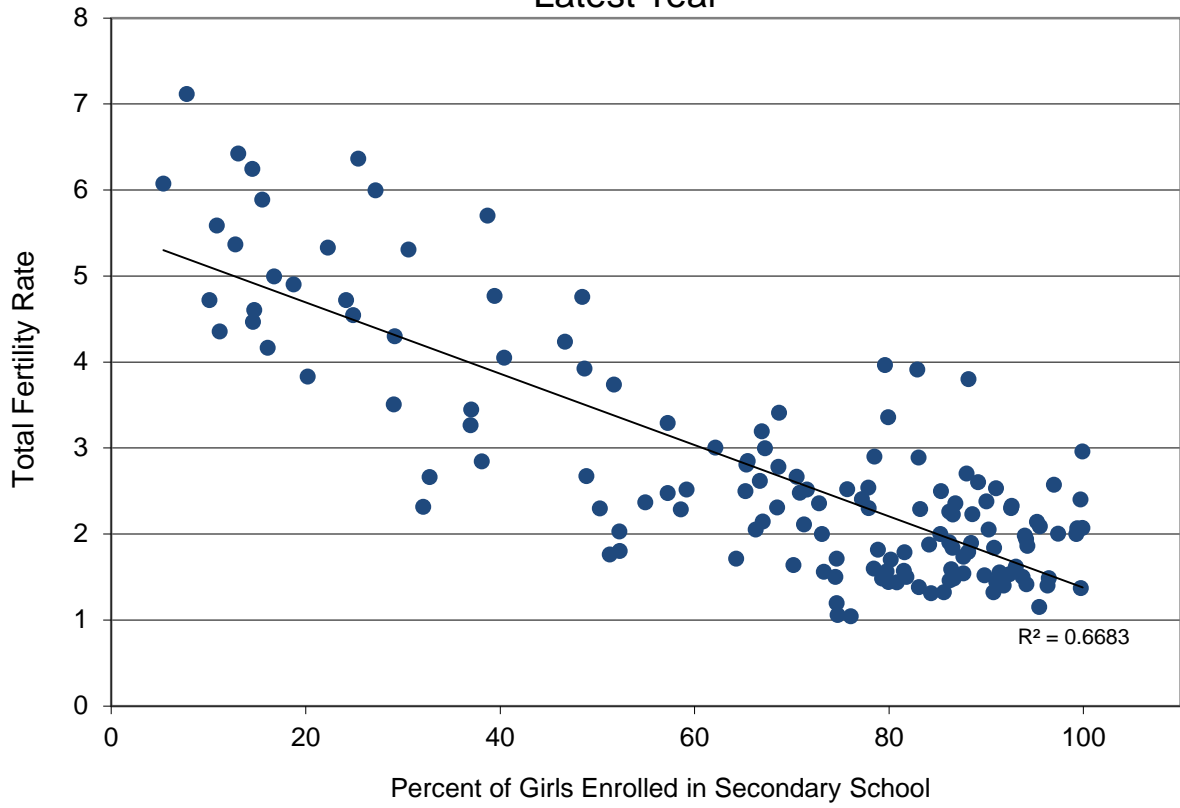
Lithuania	95.8	91.4	99.7	1.6
Luxembourg	97.6	86.4	-	1.6
Macedonia	99.2	80.8	95.9	1.4
Madagascar	79.8	24.2	61.6	4.7
Malawi	97.6	27.2	68.5	6.0
Malaysia	95.9	70.5	90.7	2.7
Maldives	96.8	52.3	98.4	1.8
Mali	62.6	25.4	20.3	6.4
Malta	94.3	79.9	93.5	1.4
Marshall Islands	97.5	63.9	-	-
Mauritania	76.0	14.7	51.2	4.6
Mauritius	94.4	74.5	86.2	1.5
Mexico	99.9	72.8	91.9	2.4
Micronesia	-	-	-	3.5
Moldova	90.1	79.3	98.1	1.5
Monaco	-	-	-	-
Mongolia	98.5	85.3	97.9	2.5
Montenegro	-	-	97.4	1.7
Montserrat	-	96.2	-	-
Morocco	95.6	32.1	43.9	2.3
Mozambique	87.6	16.7	42.8	5.0
Namibia	88.9	57.2	88.5	3.3
Nauru	-	-	-	-
Nepal	64.0	-	48.3	2.8
Netherlands	98.9	88.2	-	1.8
Netherlands Antilles	-	83.9	96.4	-
New Zealand	99.6	95.2	-	2.1
Nicaragua	94.5	48.9	77.9	2.7
Niger	56.6	7.8	15.1	7.1
Nigeria	54.8	-	50.4	5.6
Niue	-	-	-	-
North Korea	-	-	100.0	2.0
Norway	99.2	94.0	-	2.0
Oman	96.8	90.0	80.9	2.4
Pakistan	66.5	29.1	40.3	3.5
Palau	94.5	-	-	-
Palestinian Territory	88.5	86.5	92.2	-
Panama	98.2	71.6	93.5	2.5
Papua New Guinea	-	-	57.3	4.0
Paraguay	85.7	62.2	92.9	3.0
Peru	-	77.9	84.6	2.5
Philippines	89.5	66.9	95.8	3.2
Poland	95.9	91.8	99.4	1.4
Portugal	99.5	85.6	93.6	1.3
Puerto Rico	88.4	-	91.0	1.7
Qatar	96.6	92.6	95.4	2.3
Romania	87.3	83.1	97.1	1.4
Russian	96.3	-	99.5	1.5
Rwanda	92.2	-	67.5	5.4
Samoa	97.1	82.9	98.6	3.9
San Marino	93.0	-	-	-
Sao Tome and Principe	97.9	51.7	84.7	3.7
Saudi Arabia	89.4	83.0	81.3	2.9
Senegal	80.2	18.8	38.7	4.9
Serbia	94.4	91.1	96.7	1.4
Seychelles	94.0	99.7	92.3	2.4
Sierra Leone	-	-	31.4	5.1

Singapore	-	-	93.8	1.2
Slovakia	-	-	-	1.4
Slovenia	97.1	92.4	99.7	1.5
Solomon Islands	81.1	29.2	-	4.3
Somalia	-	-	-	6.4
South Africa	90.9	65.3	87.0	2.5
South Korea	98.4	95.5	-	1.1
Spain	99.8	96.3	97.0	1.4
Sri Lanka	94.4	-	90.0	2.3
St. Kitts and Nevis	86.2	87.7	-	-
St. Lucia	89.2	85.3	-	2.0
St. Vincent and the Grenadines	97.0	95.5	-	2.1
Sudan	41.9	-	62.0	4.5
Suriname	91.0	54.9	94.0	2.4
Swaziland	85.1	37.0	86.8	3.4
Sweden	99.0	94.1	-	1.9
Switzerland	99.5	81.8	-	1.5
Syrian Arab Republic	98.4	67.2	76.9	3.0
Tajikistan	96.0	79.9	99.6	3.4
Tanzania	98.0	-	67.5	5.6
Thailand	89.4	78.4	91.5	1.6
Timor-Leste	85.6	38.7	53.0	5.7
Togo	-	16.1	43.6	4.2
Tokelau	-	-	-	-
Tonga	-	79.6	99.1	4.0
Trinidad and Tobago	97.0	70.2	98.4	1.6
Tunisia	96.5	66.3	71.0	2.1
Turkey	96.7	71.3	85.3	2.1
Turkmenistan	-	-	99.5	2.4
Turks and Caicos Islands	83.9	68.7	-	-
Tuvalu	-	-	-	-
Uganda	92.3	14.5	64.6	6.2
Ukraine	91.5	86.3	99.6	1.5
United Arab Emirates	97.7	81.6	91.5	1.8
United Kingdom	99.7	97.4	-	2.0
United States of America	96.1	90.2	-	2.1
Uruguay	99.2	73.1	98.5	2.0
Uzbekistan	91.5	91.0	99.2	2.5
Vanuatu	97.0	48.7	80.8	3.9
Venezuela	95.1	75.7	95.4	2.5
Viet Nam	-	-	91.1	1.8
Yemen	70.5	30.6	46.8	5.3
Zambia	93.9	-	61.7	6.2
Zimbabwe	-	-	89.9	3.4

Source: Compiled by Earth Policy Institute from UNESCO Institute for Statistics, *Data Center*, electronic database, at stats.uis.unesco.org, viewed 7 August 2012.

This is part of a supporting dataset for Lester R. Brown, **Full Planet, Empty Plates: The New Geopolitics of Food Scarcity** (New York: W.W. Norton & Company, 2012). For more information, see Earth Policy Institute on-line at www.earth-policy.org.

Female Secondary Education and Total Fertility Rates, Latest Year



Source: EPI from UIS

Top 20 Failing States, 2012

Rank	Country	Score
1	Somalia	114.9
2	Democratic Republic of the Congo	111.2
3	Sudan	109.4
N/R	South Sudan*	108.4
4	Chad	107.6
5	Zimbabwe	106.3
6	Afghanistan	106.0
7	Haiti	104.9
8	Yemen	104.8
9	Iraq	104.3
10	Central African Republic	103.8
11	Côte d'Ivoire	103.6
12	Guinea	101.9
13	Pakistan	101.6
14	Nigeria	101.1
15	Guinea Bissau	99.2
16	Kenya	98.4
17	Ethiopia	97.9
18	Burundi	97.5
18	Niger	96.9
20	Uganda	96.5

Note: Failing state ranks and scores for 2012 are based on 2011 data.

* According to Fund for Peace: "Though South Sudan has been included for the first time as the Index's 178th country, it will not receive a formal rank for the 2012 Index as the data available since independence does not constitute a full year and thus cannot be accurately compared to the other 177 countries."

Source: Compiled by Earth Policy Institute from Fund for Peace, "Failed States Index," at www.fundforpeace.org/web, updated 2012.

This is part of a supporting dataset for Lester R. Brown, **Full Planet, Empty Plates: The New Geopolitics of Food Scarcity** (New York: W.W. Norton & Company, 2012). For more information, see Earth Policy Institute on-line at www.earth-policy.org.

Failed States Index Scores for 178 Countries, 2012

Country	Rank	Total	Demographic Pressures	Refugees and IDPs	Group Grievance	Human Flight	Uneven Economic Development	Economic Decline	Delegitimization of the State	Public Services	Human Rights	Security Apparatus	Factionalized Elites	External Intervention
Somalia	1	114.9	9.8	10.0	9.6	8.6	8.1	9.7	9.9	9.8	9.9	10.0	9.8	9.8
Democratic Republic of the Congo	2	111.2	9.9	9.7	9.3	7.4	8.9	8.8	9.5	9.2	9.7	9.7	9.5	9.6
Sudan	3	109.4	8.4	9.9	10.0	8.3	8.8	7.3	9.5	8.5	9.4	9.7	9.9	9.5
South Sudan*	N/R	108.4	8.4	9.9	10.0	6.4	8.8	7.3	9.1	9.5	9.2	9.7	10.0	10.0
Chad	4	107.6	9.3	9.5	9.1	7.7	8.6	8.3	9.8	9.5	9.3	8.9	9.8	7.8
Zimbabwe	5	106.3	9.0	8.4	8.7	9.0	8.9	8.9	9.4	9.1	8.9	8.7	9.8	7.5
Afghanistan	6	106.0	8.9	9.0	9.4	7.4	8.1	7.7	9.5	8.5	8.5	9.7	9.4	10.0
Haiti	7	104.9	9.5	8.1	7.0	8.8	8.6	9.5	9.3	9.3	7.7	8.2	9.0	9.7
Yemen	8	104.8	8.8	8.7	9.0	7.0	8.4	8.7	9.1	9.0	8.4	9.7	9.8	8.3
Iraq	9	104.3	8.0	8.5	9.7	8.6	8.7	7.7	8.4	7.8	8.3	9.9	9.6	9.0
Central African Republic	10	103.8	8.8	9.7	8.5	5.6	8.7	8.0	8.9	9.1	8.5	9.6	9.1	9.3
Côte d'Ivoire	11	103.6	7.9	9.0	9.0	7.6	7.7	7.4	9.6	8.3	8.3	8.9	9.9	10.0
Guinea	12	101.9	8.3	8.0	7.9	8.0	8.1	8.9	9.5	8.6	8.7	9.4	9.2	7.3
Pakistan	13	101.6	8.5	9.0	9.6	7.2	8.2	7.2	8.3	7.0	8.6	9.3	9.1	9.4
Nigeria	14	101.1	8.4	6.5	9.7	7.6	8.9	7.5	9.1	9.1	8.6	9.2	9.8	6.6
Guinea Bissau	15	99.2	8.7	7.5	5.7	7.7	7.8	9.0	9.3	8.5	7.5	9.4	9.2	8.9
Kenya	16	98.4	8.9	8.4	8.9	7.7	8.2	7.3	8.6	8.1	7.4	7.6	9.0	8.4
Ethiopia	17	97.9	9.6	8.7	8.1	7.0	7.9	7.4	7.2	8.4	8.6	8.1	8.7	8.2
Burundi	18	97.5	8.8	8.9	8.0	5.9	7.9	8.8	8.3	8.5	8.1	7.4	7.9	9.0
Niger	18	96.9	9.3	6.9	7.7	6.0	7.6	8.6	8.4	9.2	7.9	8.2	8.6	8.4
Uganda	20	96.5	8.8	8.2	7.7	6.9	8.1	7.5	8.0	8.6	7.8	8.3	8.7	7.9
Burma (Myanmar)	21	96.2	7.9	8.2	8.7	5.7	8.7	7.6	9.4	8.4	8.6	7.5	8.6	6.9
North Korea	22	95.5	7.9	5.3	6.6	4.4	8.6	9.3	9.9	9.4	9.6	8.1	7.7	8.7
Eritrea	23	94.5	8.6	7.1	6.4	7.1	6.9	8.6	8.4	8.2	8.7	7.8	8.1	8.5
Syria	23	94.5	5.5	9.0	9.2	6.0	7.5	6.3	9.5	7.0	9.4	8.5	8.7	7.9
Liberia	25	93.3	8.4	8.9	6.5	6.7	7.7	8.6	6.9	8.8	6.1	7.0	8.4	9.3
Cameroon	26	93.1	8.2	7.0	7.5	7.5	8.1	6.5	8.9	8.1	7.8	7.9	9.2	6.5
Nepal	27	93.0	7.9	7.7	9.0	5.6	8.4	7.6	8.0	7.4	8.2	7.5	8.2	7.4
Timor-Leste	28	92.7	8.4	7.7	6.8	6.1	7.0	8.0	8.5	8.4	6.3	8.3	8.3	8.9
Bangladesh	29	92.2	8.0	6.8	8.9	7.8	8.1	7.4	8.2	7.8	6.8	7.6	8.9	5.9
Sri Lanka	29	92.2	7.1	8.7	9.1	7.1	8.1	5.6	8.1	5.8	8.7	8.2	9.2	6.5
Sierra Leone	31	90.4	8.9	7.8	6.2	7.7	8.2	8.3	7.6	8.7	6.4	5.7	7.9	7.1
Egypt	31	90.4	7.1	6.4	8.8	5.7	7.4	7.1	9.2	5.9	9.0	7.0	8.8	8.0
Republic of the Congo	33	90.1	8.3	7.7	6.3	6.5	7.9	7.5	8.6	8.4	7.2	7.0	6.7	7.9
Iran	34	89.6	5.8	7.6	8.6	6.4	6.7	6.4	8.8	5.3	8.9	8.3	9.3	7.4
Rwanda	35	89.3	8.6	7.6	8.5	7.0	7.4	6.8	6.8	7.5	8.0	5.5	7.9	7.7
Malawi	36	88.8	8.8	6.2	5.7	7.8	7.7	8.5	8.0	7.9	7.1	5.1	7.6	8.4
Cambodia	37	88.7	7.5	5.9	7.3	7.7	7.1	6.9	8.2	8.3	7.7	6.5	8.0	7.7
Mauritania	38	87.6	8.0	6.5	7.5	5.4	6.3	7.6	7.6	7.9	7.3	7.7	8.1	7.6
Togo	39	87.5	8.1	6.8	5.1	6.9	7.6	7.7	8.2	8.2	7.4	7.3	7.5	6.8
Uzbekistan	39	87.5	7.0	5.7	7.7	6.0	7.9	7.1	8.7	5.7	9.1	8.2	8.7	5.7
Burkina Faso	41	87.4	8.9	5.9	5.2	6.0	8.2	7.7	8.0	8.4	7.0	7.1	7.3	7.7
Kyrgyzstan	41	87.4	6.5	5.3	8.4	6.7	7.3	7.9	8.7	5.4	7.8	7.4	8.3	7.6
Equatorial Guinea	43	86.3	8.2	3.0	6.6	6.9	8.8	4.8	9.4	7.8	9.1	7.8	8.2	5.7
Zambia	44	85.9	9.1	7.3	6.3	7.1	7.7	8.1	8.0	7.7	6.4	5.3	6.0	7.0

Lebanon	45	85.8	6.2	8.2	8.4	6.3	6.5	5.5	7.5	5.5	6.5	8.4	9.1	7.7
Tajikistan	46	85.7	7.3	5.6	6.9	5.7	6.5	7.7	8.8	6.6	8.5	7.1	8.3	6.7
Solomon Islands	47	85.6	7.6	4.8	6.8	5.4	8.3	7.9	7.6	7.8	6.2	6.7	8.0	8.5
Laos	48	85.5	7.8	5.5	6.3	7.1	5.8	6.7	8.3	7.4	8.2	6.9	8.6	6.9
Angola	48	85.1	8.9	6.9	6.5	5.6	9.1	4.8	8.2	8.3	7.6	5.9	7.0	6.4
Libya	50	84.9	5.8	5.1	7.0	3.9	7.0	5.5	8.1	7.6	9.0	9.0	8.0	9.0
Georgia	51	84.8	5.5	7.2	8.3	5.2	6.6	6.3	8.5	5.7	6.7	7.6	9.1	8.2
Colombia	52	84.4	6.4	8.4	7.2	7.6	8.4	4.0	7.4	5.9	7.0	7.0	7.7	7.4
Djibouti	53	83.8	8.3	6.9	6.5	4.9	7.1	6.6	7.5	7.2	6.8	6.5	7.5	8.0
Papua New Guinea	54	83.7	7.4	4.8	6.9	7.2	8.8	6.6	7.6	8.6	6.1	6.3	7.1	6.1
Swaziland	55	83.5	8.9	4.6	3.6	5.8	7.0	8.3	8.6	7.7	8.3	6.3	7.0	7.4
Philippines	56	83.2	7.3	6.2	7.6	6.5	6.8	5.3	7.9	6.3	7.0	8.4	8.0	5.8
Comoros	57	83.0	7.3	4.2	5.3	6.9	6.1	7.9	7.7	7.9	6.3	7.5	7.5	8.4
Madagascar	58	82.5	8.0	4.4	5.2	5.2	7.6	7.9	7.3	8.3	6.0	6.9	7.8	8.0
Mozambique	59	82.4	8.9	4.3	4.9	7.5	7.7	7.9	7.3	8.3	6.7	6.8	5.6	6.5
Bhutan	59	82.4	6.7	6.6	7.6	6.5	7.8	6.6	6.3	6.6	7.3	5.9	7.5	7.0
Israel/West Bank	61	82.2	6.5	7.3	9.5	3.5	7.8	4.0	7.0	6.2	7.9	6.8	8.1	7.6
Bolivia	62	82.1	7.5	4.3	7.4	6.1	8.8	6.5	7.1	6.8	6.5	6.5	8.0	6.6
Indonesia	63	80.6	7.4	6.3	7.1	6.6	7.2	6.0	6.7	6.2	6.8	7.1	7.0	6.2
Gambia	63	80.6	7.8	6.1	3.7	6.8	6.5	7.4	7.8	7.2	7.5	5.8	6.8	7.2
Fiji	65	80.5	5.1	3.3	7.6	7.3	7.7	7.0	8.8	5.2	7.0	7.0	7.9	6.6
Tanzania	66	80.4	8.2	7.1	5.8	6.1	5.9	6.9	6.5	8.5	6.5	5.8	5.7	7.4
Ecuador	67	80.1	5.6	6.0	6.9	7.1	7.7	5.9	7.5	7.2	5.2	6.5	8.2	6.3
Azerbaijan	68	79.8	5.6	7.6	7.2	5.1	6.6	5.2	8.0	5.4	7.3	6.7	7.8	7.2
Nicaragua	69	79.6	6.5	4.3	6.2	7.5	8.2	6.9	7.4	7.0	5.7	5.9	6.8	7.0
Guatemala	70	79.4	7.0	5.9	7.1	6.8	7.6	6.1	6.8	6.7	6.7	7.3	6.0	5.4
Senegal	71	79.3	7.8	6.7	6.0	6.3	6.9	6.9	6.0	7.5	6.5	6.3	6.3	6.0
Lesotho	72	79.0	8.7	4.6	4.7	6.5	6.4	8.6	6.3	8.0	5.7	5.5	7.0	6.9
Moldova	73	78.7	5.8	4.7	6.3	7.2	6.2	6.2	7.4	6.0	6.2	7.5	8.0	7.2
Benin	74	78.6	8.0	6.8	3.6	6.3	6.9	7.6	6.4	8.3	5.4	6.0	6.4	7.0
Honduras	75	78.5	7.3	3.6	5.6	6.9	8.1	7.2	7.0	6.7	6.2	7.0	6.3	6.6
China	76	78.3	7.9	5.9	7.9	5.3	8.3	3.9	7.9	6.3	8.6	6.0	6.9	3.5
Algeria	77	78.1	6.1	6.5	8.1	5.4	6.5	5.5	7.2	5.9	7.4	7.1	6.8	5.5
India	78	78.0	7.3	5.5	7.9	5.9	8.4	5.5	5.5	6.9	5.8	7.5	6.8	5.0
Mali	79	77.9	8.8	5.5	6.0	7.3	6.4	7.5	5.3	8.0	4.6	7.1	4.5	7.0
Bosnia and Herzegovina	79	77.9	4.7	6.5	8.0	5.8	6.5	5.5	7.0	4.7	6.1	6.7	8.7	7.7
Turkmenistan	81	77.4	6.2	3.9	6.4	4.8	6.8	5.7	9.0	6.4	8.4	7.2	7.7	4.9
Venezuela	82	77.3	5.7	4.5	6.7	6.1	7.2	5.9	7.9	6.3	7.7	6.7	7.3	5.2
Russia	83	77.1	6.0	5.0	7.9	5.4	7.3	4.0	7.9	5.0	8.1	8.2	8.0	4.3
Thailand	84	77.0	8.2	6.7	7.8	4.0	6.9	4.0	6.5	4.7	7.2	7.3	8.8	4.9
Turkey	85	76.6	6.0	6.5	8.6	4.2	7.1	5.6	6.2	6.0	5.3	7.7	7.5	5.9
Belarus	85	76.6	6.0	3.3	6.5	4.2	6.0	6.5	9.0	5.5	8.3	6.0	8.0	7.3
Morocco	87	76.1	6.1	6.2	6.8	6.7	7.2	5.6	6.6	6.2	6.4	6.6	6.6	5.2
Maldives	88	75.1	5.7	5.6	4.9	6.5	4.7	6.4	7.9	6.6	7.5	5.7	7.6	6.1
Serbia	89	75.0	5.0	6.3	7.9	4.7	6.2	6.2	6.6	4.6	5.8	6.4	8.0	7.3
Jordan	90	74.8	6.5	7.3	7.0	4.4	6.8	6.4	6.3	4.6	7.1	5.7	6.3	6.5
Cape Verde	91	74.7	7.0	4.0	4.2	8.4	6.6	6.6	6.6	6.6	5.4	5.7	5.7	7.9

Gabon	92	74.6	6.5	5.9	3.3	5.8	7.6	5.7	7.8	6.9	6.8	5.7	7.1	5.5
El Salvador	93	74.4	7.7	5.2	6.0	7.2	7.3	6.0	6.2	6.6	6.4	6.7	4.3	4.8
Tunisia	94	74.2	5.2	4.0	5.6	5.2	6.3	5.5	7.8	5.0	8.3	7.5	7.8	6.0
Dominican Republic	95	74.1	6.5	5.2	5.8	7.6	7.2	5.8	5.7	6.5	6.0	5.5	6.5	5.9
Viet Nam	96	74.0	6.1	4.4	6.0	6.0	5.9	6.1	7.5	6.1	7.4	5.7	6.9	5.9
Sao Tome	97	73.9	6.8	4.0	4.8	7.6	6.1	7.4	6.7	6.7	4.6	5.8	6.3	7.0
Mexico	98	73.6	6.0	4.2	5.8	6.2	7.5	5.7	6.6	6.1	6.2	7.7	5.2	6.4
Peru	99	73.5	6.1	4.4	7.1	6.4	8.0	4.6	7.1	6.6	4.9	6.9	6.6	4.8
Saudi Arabia	100	73.4	5.8	5.5	7.7	2.9	6.7	3.4	7.6	4.3	8.6	7.2	7.9	5.9
Cuba	101	73.1	6.0	5.0	4.8	6.6	5.9	5.5	6.4	5.0	7.4	6.6	6.9	7.0
Armenia	102	72.2	5.2	6.8	5.7	6.3	5.9	5.6	6.8	4.7	6.8	5.2	7.0	6.1
Micronesia	103	71.9	6.8	3.4	4.2	8.1	7.5	7.0	6.3	6.6	2.8	5.4	5.6	8.2
Guyana	104	71.4	6.1	3.5	6.2	8.6	7.1	6.1	6.5	5.7	4.7	6.1	5.1	5.7
Suriname	105	71.2	5.8	3.2	6.1	7.3	7.5	6.6	6.4	5.0	5.3	5.8	5.8	6.4
Namibia	106	71.0	7.1	5.3	5.6	6.8	8.5	6.4	4.4	6.6	5.2	5.2	3.5	6.3
Paraguay	107	70.9	6.0	2.2	6.2	5.2	8.3	5.6	7.6	5.8	6.1	6.1	7.7	4.2
Kazakhstan	107	70.9	5.6	3.5	6.5	3.5	5.6	6.5	7.5	5.4	7.1	6.3	7.7	5.6
Macedonia	109	69.1	4.2	4.9	7.6	6.4	6.5	5.9	6.4	4.2	4.6	5.7	6.7	5.9
Samoa	110	68.5	6.7	2.6	4.8	8.6	6.3	5.4	6.0	4.8	4.4	5.5	5.1	8.3
Malaysia	110	68.5	5.7	4.5	6.4	4.4	6.4	4.6	6.5	4.8	7.4	6.3	6.8	4.7
Ghana	112	67.5	6.7	5.2	5.2	7.6	6.2	6.0	4.8	7.6	4.5	3.3	4.7	5.7
Ukraine	113	67.2	5.0	2.9	6.2	6.0	5.6	5.7	7.7	3.9	5.4	4.3	8.0	6.5
Belize	113	67.2	6.8	5.1	4.4	7.0	6.9	5.4	6.0	5.9	3.9	5.5	4.3	6.0
South Africa	115	66.8	8.1	6.4	5.6	4.0	8.2	5.6	5.2	5.8	4.5	4.8	5.9	2.8
Cyprus	115	66.8	4.1	4.7	7.3	5.0	7.0	5.4	5.2	3.1	3.3	5.0	7.9	8.8
Botswana	117	66.5	8.6	6.1	4.8	5.3	7.7	6.5	4.7	5.9	4.7	3.8	3.3	5.1
Albania	118	66.1	5.0	2.8	5.1	6.8	5.1	5.6	7.3	4.9	5.5	5.4	6.6	6.0
Jamaica	119	65.8	5.9	3.1	4.0	7.0	6.2	6.6	6.4	5.6	5.2	6.2	3.7	6.0
Seychelles	120	65.1	5.5	3.6	4.8	5.2	6.9	4.9	6.3	3.8	5.5	6.1	5.7	6.8
Grenada	121	65.0	5.5	2.9	3.9	8.2	6.2	6.0	6.2	3.9	4.0	5.3	5.6	7.4
Trinidad	122	64.4	5.5	2.9	4.4	7.7	6.6	4.7	5.9	5.1	5.5	6.0	5.6	4.5
Brazil	123	64.1	7.0	3.9	6.2	4.2	8.4	3.6	5.6	5.5	5.0	6.2	4.9	3.6
Brunei	123	64.1	4.8	3.6	6.2	4.3	7.8	3.1	7.4	2.9	6.6	5.6	7.4	4.4
Bahrain	125	62.2	4.6	2.6	7.3	2.8	5.7	3.1	7.5	2.7	7.0	6.0	7.0	5.9
Romania	126	59.5	4.6	2.9	6.0	5.0	5.6	6.0	6.3	4.4	4.2	4.4	5.2	4.9
Antigua & Barbuda	127	58.9	4.9	2.7	4.1	7.9	5.6	4.8	5.8	4.3	4.8	4.9	3.7	5.5
Kuwait	128	58.8	4.9	3.5	4.6	4.0	5.6	3.7	6.5	2.9	6.5	4.7	7.2	4.7
Mongolia	129	58.7	5.8	1.9	3.7	2.2	6.0	5.2	5.6	5.6	5.7	4.7	5.5	6.8
Bulgaria	130	56.3	4.0	3.3	4.9	5.2	5.4	5.0	5.1	4.3	4.0	4.6	5.3	5.2
Croatia	130	56.3	4.0	5.2	5.6	4.7	4.7	5.4	4.2	3.2	4.6	4.7	4.7	5.3
Panama	132	56.1	5.8	3.6	4.9	4.8	7.5	4.3	4.6	5.1	4.4	5.4	2.5	3.3
Montenegro	133	55.5	4.2	4.2	6.5	2.7	3.8	4.9	4.5	3.9	4.7	4.9	6.2	5.0
Bahamas	134	55.1	6.1	2.5	4.4	5.9	5.9	4.5	4.9	4.4	3.1	4.3	4.5	4.6
Barbados	135	52.0	4.1	2.6	4.4	6.5	6.0	5.3	3.6	3.0	2.8	4.2	4.2	5.3
Latvia	136	51.9	3.9	3.6	5.2	4.5	5.4	5.3	4.8	3.7	3.5	3.6	4.3	4.1
Oman	137	51.7	5.1	1.8	2.7	1.5	3.3	4.3	6.2	4.7	7.2	5.6	6.6	2.7
Greece	138	50.4	3.8	2.3	4.8	4.7	4.6	5.9	5.4	4.2	3.3	4.0	2.5	4.8

Costa Rica	139	49.7	4.6	4.0	4.4	3.8	6.4	4.6	3.2	4.5	2.7	2.8	3.5	5.2
United Arab Emirates	140	48.9	4.1	2.8	4.3	2.7	5.1	3.9	6.4	3.1	5.9	3.2	3.6	3.8
Hungary	141	48.3	2.8	2.8	3.8	4.2	5.2	5.9	5.8	3.4	3.2	2.6	4.7	4.0
Qatar	142	48.0	4.2	2.4	4.9	2.8	4.8	3.2	5.9	2.3	5.3	2.8	5.0	4.3
Estonia	143	47.5	3.8	3.6	5.7	4.2	4.6	3.8	3.8	3.0	2.7	3.2	5.5	3.6
Slovakia	144	47.4	3.5	2.0	5.3	4.8	4.9	5.1	4.2	3.8	3.3	2.6	3.7	4.2
Argentina	145	46.5	4.4	2.3	4.7	3.3	6.3	4.1	4.3	3.8	3.8	3.0	3.0	3.5
Italy	145	45.8	3.3	3.6	5.0	2.9	3.8	4.6	5.0	2.7	3.2	4.9	4.8	2.0
Mauritius	147	44.7	3.6	1.9	3.5	3.3	5.1	4.2	4.4	3.9	3.8	3.6	3.2	4.3
Poland	148	44.3	3.8	3.0	3.8	5.3	4.4	4.0	3.7	3.1	3.2	2.8	3.6	3.6
Lithuania	149	44.2	3.8	2.9	4.0	4.4	5.4	5.0	3.5	3.1	2.9	2.8	2.8	3.5
Malta	150	43.8	3.1	5.1	4.0	4.4	3.8	3.8	4.0	2.6	3.2	3.7	2.0	4.1
Chile	151	43.5	4.6	2.7	3.8	3.1	5.5	4.6	3.7	4.5	3.2	2.8	1.4	3.5
Japan	151	43.5	8.3	4.0	3.8	2.1	2.0	4.0	2.5	5.0	3.2	2.0	2.6	4.0
Spain	153	42.8	3.1	2.6	5.7	2.3	4.4	5.0	2.6	2.9	2.5	4.4	5.6	1.7
Uruguay	154	40.5	4.1	1.8	2.7	5.0	4.6	3.8	2.2	3.4	2.6	4.0	2.7	3.7
Czech Republic	155	39.5	2.8	2.5	3.5	3.7	3.5	4.3	3.5	3.6	2.7	2.1	3.8	3.5
South Korea	156	37.6	3.0	2.5	3.4	4.2	2.6	2.3	3.2	2.2	2.8	2.0	3.6	5.7
Singapore	157	35.6	2.6	0.9	3.0	3.1	3.7	3.3	3.5	2.2	5.0	1.8	4.0	2.5
United Kingdom	158	35.3	2.8	3.0	4.7	2.4	3.9	3.7	1.9	2.6	2.1	3.0	3.6	1.6
United States	159	34.8	3.3	2.6	3.9	1.3	5.1	3.4	2.6	2.7	3.5	1.9	3.6	1.0
Portugal	160	34.2	3.1	1.8	2.3	2.9	3.7	5.3	2.0	3.8	3.0	1.9	1.4	3.0
Slovenia	161	34.0	2.8	1.5	3.3	3.5	4.4	3.5	2.7	2.4	2.8	2.8	1.6	2.6
France	162	33.6	3.0	2.5	5.6	1.8	4.6	3.9	1.9	1.8	2.7	2.2	1.9	1.7
Belgium	163	33.5	2.6	1.9	4.1	1.9	4.1	3.6	2.4	2.5	1.8	2.3	4.0	2.3
Germany	164	31.7	2.5	3.9	4.4	2.5	4.1	2.6	1.7	1.8	2.0	2.5	2.1	1.7
Australia	165	29.2	4.4	3.0	3.9	1.4	3.6	2.6	1.3	2.1	2.2	2.0	1.6	1.1
Iceland	166	29.1	1.9	1.3	1.0	3.1	1.9	5.7	1.7	1.9	1.6	1.3	1.8	5.7
Netherlands	167	28.1	2.9	2.7	4.1	2.5	2.6	3.3	1.0	1.8	1.3	1.7	2.4	1.8
Austria	168	27.5	2.6	2.3	4.0	1.9	4.1	2.0	1.3	1.8	1.8	1.4	2.4	1.9
Canada	169	26.8	2.7	2.2	3.0	2.4	3.8	2.1	1.0	2.2	1.9	1.8	2.5	1.1
Ireland	170	26.5	2.5	1.7	1.6	3.0	2.7	3.8	2.2	2.2	1.3	1.7	1.4	2.4
New Zealand	171	25.6	2.4	1.4	3.8	2.7	3.7	3.9	0.8	2.1	1.5	1.4	1.1	0.8
Luxembourg	172	25.5	2.0	2.1	2.8	1.8	1.8	1.8	2.2	1.6	1.3	2.3	3.4	2.3
Norway	173	23.9	2.3	1.8	3.6	1.5	1.8	2.4	0.8	1.7	2.2	3.0	1.2	1.6
Switzerland	174	23.3	2.4	1.8	3.2	2.2	2.6	2.2	0.9	1.7	2.0	1.7	1.0	1.7
Denmark	175	23.0	2.8	1.9	3.0	2.2	1.8	2.2	0.8	1.7	1.5	1.8	1.0	2.3
Sweden	176	21.3	2.6	2.6	1.0	1.8	1.9	1.6	0.8	1.8	1.6	2.5	1.8	1.3
Finland	177	20.0	2.2	1.9	1.4	2.6	1.3	2.9	0.8	1.8	1.4	1.3	1.2	1.2

Note: Failed state ranks and scores for 2012 are based on 2011 data.

*According to Fund for Peace: "Though South Sudan has been included for the first time as the Index's 178th country, it will not receive a formal rank for the 2012 Index as the data available since independence does not constitute a full year and thus cannot be accurately compared to the other 177 countries."

Source: Compiled by Earth Policy Institute from Fund for Peace, "Failed States Index," at www.fundforpeace.org/web, updated 2012.

This is part of a supporting dataset for Lester R. Brown, **Full Planet, Empty Plates: The New Geopolitics of Food Scarcity** (New York: W.W. Norton & Company, 2012). For more information, see Earth Policy Institute on-line at www.earth-policy.org.

Demographic Indicators for Top Failing States, 2012

Country	Failed State Rank (2012) ¹	Failed State Score (2012) ¹	Population (2012) Million	Population Growth Rate (2010-2015) Percent	Total Fertility Rate (2010-2015) Average Births per Woman	Population under 15 (2010) Percent	Infant Mortality Rate (2010-2015) Deaths per Thousand Live Births	Life Expectancy at Birth (2010-2015) Years	Share Urban (2010) Percent
Somalia	1	114.9	9.8	2.6	6.3	44.9	100	51.7	37.3
Democratic Republic of the Congo	2	111.2	69.6	2.6	5.5	46.3	110	48.9	33.7
Sudan ²	3	109.4	45.7	2.4	4.2	40.1	57	62.0	33.1
Chad	4	107.6	11.8	2.6	5.7	45.4	124	50.1	21.7
Zimbabwe	5	106.3	13.0	2.2	3.1	38.9	47	53.5	38.1
Afghanistan	6	106.0	33.4	3.1	6.0	46.4	125	49.3	23.2
Haiti	7	104.9	10.3	1.3	3.2	35.9	58	62.5	52
Yemen	8	104.8	25.6	3.0	4.9	44.2	44	66.1	31.7
Iraq	9	104.3	33.7	3.1	4.5	43.2	33	70.2	66.5
Central African Republic	10	103.8	4.6	2.0	4.4	40.4	96	49.5	38.8
Côte d'Ivoire	11	103.6	22.0	2.2	4.2	40.9	69	56.4	50.6
Guinea	12	101.9	10.5	2.5	5.0	42.9	84	54.7	35
Pakistan	13	101.6	180.0	1.8	3.2	35.4	66	65.8	35.9
Nigeria	14	101.1	166.6	2.53	5.43	42.8	87.6	52.5	49
Guinea Bissau	15	99.2	1.6	2.08	4.88	41.3	109.8	48.8	43.2
Kenya	16	98.4	42.7	2.69	4.62		58.1	58	23.6
Ethiopia	17	97.9	86.5	2.07	3.85	41.5	62.9	60	16.8
Burundi	18	97.5	8.7	1.93	4.05	37.9	94.1	51.1	10.6
Niger	18	96.9	16.6	3.5	6.9	49.0	86	55.3	17.6
Uganda	20	96.5	35.6	3.1	5.9	48.4	72	54.7	15.2

¹ Failed state ranks and scores for 2012 are based on 2011 data.

² Data under the heading "Sudan" reflect values for the area that is now comprised of Sudan and South Sudan. South Sudan gained its independence on July 9, 2011.

Source: Compiled by Earth Policy Institute with failed state ranks and scores from Fund for Peace, "Failed States Index," at www.fundforpeace.org/web, updated 2012; population, population growth, fertility, population under 15, infant mortality, and life expectancy from World Population Prospects: The 2010 Revision, electronic database, at esa.un.org/unpd/wpp/index.htm, updated 3 May 2011; share urban from U.N. Population Division, *World Urbanization Prospects: The 2011 Revision*, at esa.un.org/unpd/wup/index.htm, updated 26 April 2012.

This is part of a supporting dataset for Lester R. Brown, **Full Planet, Empty Plates: The New Geopolitics of Food Scarcity** (New York: W.W. Norton & Company, 2012). For more information, see Earth Policy Institute on-line at www.earth-policy.org.

Social Indicators for Top Failing States, 2012

Country	Failed State Rank (2012) ¹	Failed State Score (2012) ¹	GDP Per Capita (2012) Current PPP-Adjusted Dollars ²	Undernourished Population (2006-2008) Percent	Net Imports as a Share of Grain Consumption ³ (Latest Year) Percent ⁴	Recipient of WFP Food Aid (2012)	Primary School Net Enrollment (Latest Year) Percent ⁵	Adult Literacy Rate (Latest Year)
Somalia	1	114.9	-	-	-	Yes	14	-
Democratic Republic of the Congo	2	111.2	348	-	-	Yes	33	67
Sudan ⁶	3	109.4	2,726	22	46	Yes	46	71
Chad	4	107.6	1,865	39	10	Yes	62	34
Zimbabwe	5	106.3	487	30	68	Yes	98	92
Afghanistan	6	106.0	956	-	-	Yes	26	18
Haiti	7	104.9	1,235	57	62	Yes	57	49
Yemen	8	104.8	2,307	30	79	Yes	78	64
Iraq	9	104.3	3,886	-	-	Yes	89	78
Central African Republic	10	103.8	768	40	24	Yes	69	56
Côte d'Ivoire	11	103.6	1,590	14	53	Yes	61	56
Guinea	12	101.9	1,083	16	18	Yes	77	41
Pakistan	13	101.6	2,787	25	-17	Yes	74	55
Nigeria	14	101.1	2,578	6	18	No	58	61
Guinea Bissau	15	99.2	1,144	22	38	Yes	75	54
Kenya	16	98.4	1,746	33	41	Yes	84	87
Ethiopia	17	97.9	1,093	41	7	Yes	82	39
Burundi	18	97.5	615	62	22	Yes	90	67
Niger	19	96.9	771	16	4	Yes	62	29
Uganda	20	96.5	1,317	22	-3	Yes	91	73

Notes:

"-" indicates no data available.

¹ Failed state ranks and scores for 2012 are based on 2011 data.

² Purchasing-power-parity (PPP) adjustment attempts to make currency among different countries comparable based on the amount of currency required to purchase the same volume of goods in each country. The IMF expresses PPP-adjusted figures in international dollars, a theoretical currency that corresponds to nominal U.S. dollars.

³ Figures for Burundi, Chad, Central African Republic, Guinea Bissau, Haiti, Niger, and Zimbabwe are based on 2009 FAO figures using the formula "Imports" minus "Exports" divided by "Domestic Supply." Figures for remaining countries are based on 2011 USDA figures for "Domestic Consumption."

⁴ Negative values indicate that the country is a net exporter of grain.

⁵ Enrollment of the official age group for primary school as a percentage of the corresponding population.

⁶ Except in the case of grain imports, data under the heading "Sudan" reflect values for the area that is now comprised of Sudan and South Sudan. South Sudan gained its independence on July 9, 2011.

Source: Compiled by Earth Policy Institute with failed state ranks and scores from Fund for Peace, "Failed States Index," at www.fundforpeace.org/web, updated 2012; GDP per capita from International Monetary Fund (IMF), *World Economic Outlook Database*, at www.imf.org/external/pubs/ft/weo/2012/01/weodata/index.aspx, updated 16 July 2012; undernourishment from U.N. Food and Agriculture Organization (FAO), "Food Security Statistics," at www.fao.org/economic/ess/ess-fs/fs-data/ess-fadata/en/, updated 31 October 2011; grain data for Burundi, Chad, Central African Republic, Guinea Bissau, Haiti, Niger, and Zimbabwe from FAO, *FAOSTAT*, electronic database, at faostat.fao.org, updated 21 July 2011; grain data for remaining countries from U.S. Department of Agriculture (USDA), *Production, Supply and Distribution*, electronic database, at www.fas.usda.gov/psdonline, updated 11 July 2012; WFP food aid recipients from U.N. World Food Programme (WFP), "Countries," at www.wfp.org/countries, viewed 7 August 2012; primary enrollment and literacy from UNESCO Institute for Statistics, *Data Centre*, electronic database, at stats.uis.unesco.org, viewed 7 August 2012.

This is part of a supporting dataset for Lester R. Brown, **Full Planet, Empty Plates: The New Geopolitics of Food Scarcity** (New York: W.W. Norton & Company, 2012). For more information, see Earth Policy Institute on-line at www.earth-policy.org.

Environmental Indicators for Top Failing States, 2012

Country	Failed State Rank (2012) ¹	Failed State Score (2012) ¹	Population Density (2012) Population per Square Kilometer	Livestock Density ² (2010) Animals per Square Kilometer	Arable Land (2009) Hectares per Person	Forests as a Share of Total Land Area (2010) Percent	Annual Forest Area Change ³ (2005-2010) Percent	Total Renewable Water Resources (2010) Cubic Meters Per Person Per Year ⁴	Internal Renewable Water Resources (2010) Cubic Meters Per Person Per Year ⁴
Somalia	1	114.9	15.4	50	0.11	11	-1.1	1,575	643
Democratic Republic of the Congo	2	111.2	29.7	3	0.10	68	-0.2	19,449	13,643
Sudan ⁵	3	109.4	18.2	55	0.47	29	-0.1	1,481	689
Chad	4	107.6	9.2	14	0.39	9	-0.7	3,830	1,336
Zimbabwe	5	106.3	9.2	21	0.34	40	-2.0	1,591	975
Afghanistan	6	106.0	51.2	35	0.23	2	0.0	2,069	1,751
Haiti	7	104.9	369.6	128	0.11	4	-0.8	1,404	1,302
Yemen	8	104.8	48.4	38	0.05	1	0.0	87	87
Iraq	9	104.3	76.9	25	0.14	2	0.0	2,387	1,111
Central African Republic	10	103.8	7.3	15	0.45	36	-0.1	32,811	32,038
Côte d'Ivoire	11	103.6	63.9	14	0.14	33	n.s.	4,111	3,893
Guinea	12	101.9	42.6	34	0.29	27	-0.5	22,641	22,641
Pakistan	13	101.6	226.0	158	0.12	2	-2.4	1,422	317
Nigeria	14	101.1	180.4	119	0.22	10	-4.0	1,807	1,395
Guinea Bissau	15	99.2	43.7	55	0.20	72	-0.5	20,462	10,561
Kenya	16	98.4	73.7	72	0.14	6	-0.3	758	511
Ethiopia	17	97.9	78.4	99	0.17	11	-1.1	1,471	2,010
Burundi	18	97.5	314.3	119	0.11	7	-1.0	1,496	1,200
Niger	19	96.9	13.1	27	1.00	1	-1.0	2,169	226
Uganda	20	96.5	147.8	93	0.20	15	-2.7	1,975	1,167

Notes:

"n.s." (not significant) indicates a very small value.

¹ Failed state ranks and scores for 2012 are based on 2011 data.

² Livestock includes cattle, goats, and sheep.

³ Negative figures indicate forest area losses.

⁴ Regions where water supplies are less than 1,700 cubic meters per person per year are considered to be "water stressed," those where water supplies are less than 1,000 cubic meters per person per year are said to suffer from "water scarcity," and those with less than 500 cubic meters per person per year suffer from "absolute water scarcity."

⁵ Data under the heading "Sudan" reflect values for the area that is now comprised of Sudan and South Sudan. South Sudan gained its independence on July 9, 2011.

Source: Compiled by Earth Policy Institute with failed state ranks and scores from Fund for Peace, "Failed States Index," at www.fundforpeace.org/web, updated 2012; population density from U.N. Population Division, *World Population Prospects: The 2010 Revision*, electronic database, at esa.un.org/unpd/wpp/index.htm, updated 3 May 2011; livestock from U.N. Food and Agriculture Organization (FAO), *FAOSTAT*, electronic database, at faostat.fao.org, updated 23 February 2012, with land area from Central Intelligence Agency, *The World Factbook*, online at www.cia.gov/library/publications, viewed 8 August 2012; arable land from World Bank, *World Development Indicators*, electronic database, at data.worldbank.org/indicator, viewed 8 August 2012; forest area and area change from FAO, *Global Forest Resources Assessment 2010: Global Tables* (Rome: 2010); renewable water resources from FAO, *AQUASTAT*, electronic database, at www.fao.org/nr/water/aquastat/data/query/index.html, viewed 8 August 2012; definitions of water stress and scarcity from United Nations, Water for Life Decade, "Water Scarcity," at www.un.org/waterforlifedecade/scarcity.html, viewed 8 August 2012.

This is part of a supporting dataset for Lester R. Brown, **Full Planet, Empty Plates: The New Geopolitics of Food Scarcity** (New York: W.W. Norton & Company, 2012). For more information, see Earth Policy Institute on-line at www.earth-policy.org.

Demographic Indicators for Top Strong States, 2012

Country	Failed State Rank (2012)*	Failed State Score (2012)*	Population (2012) Million	Population Growth Rate (2010-2015) Percent	Total Fertility Rate (2010-2015) Average Births per Woman	Population under 15 (2010) Percent	Infant Mortality Rate (2010-2015) Deaths per Thousand Live Births	Life Expectancy at Birth (2010-2015) Years	Share Urban (2010) Percent
Finland	177	20.0	5.4	0.3	1.9	16.5	2.8	80.2	83.6
Sweden	176	21.3	9.5	0.6	1.9	16.5	2.5	81.7	85.1
Denmark	175	23.0	5.6	0.4	1.9	18.0	3.9	79.0	86.8
Switzerland	174	23.3	7.7	0.4	1.5	15.2	3.5	82.5	73.6
Norway	173	23.9	5.0	0.7	2.0	18.7	2.9	81.3	79.1
Luxembourg	172	25.5	0.5	1.4	1.7	17.7	2.3	80.2	85.2
New Zealand	171	25.6	4.5	1.0	2.1	20.5	4.8	80.8	86.2
Ireland	170	26.5	4.6	1.1	2.1	21.2	3.9	80.8	61.9
Canada	169	26.8	34.7	0.9	1.7	16.4	4.9	81.2	80.6
Austria	168	27.5	8.4	0.2	1.4	14.7	3.7	81.0	67.5
Netherlands	167	28.1	16.7	0.3	1.8	17.7	4.2	80.9	82.7
Iceland	166	29.1	0.3	1.2	2.1	20.8	2.1	82.0	93.6
Australia	165	29.2	22.9	1.3	2.0	19.0	4.5	82.1	89.0
Germany	164	31.7	82.0	-0.2	1.5	13.5	3.5	80.6	73.8
Belgium	163	33.5	10.8	0.3	1.8	16.9	3.7	80.0	97.5
France	162	33.6	63.5	0.5	2.0	18.4	3.3	81.7	85.2
Slovenia	161	34.0	2.0	0.2	1.5	13.9	3.3	79.5	50.0
Portugal	160	34.2	10.7	0.1	1.3	15.1	4.2	79.8	60.5
United States	159	34.8	315.8	0.9	2.1	20.1	6.5	78.8	82.1
United Kingdom	158	35.3	62.8	0.6	1.9	17.4	4.7	80.4	79.5

* Note: Failed state ranks and scores for 2012 are based on 2011 data.

Source: Compiled by Earth Policy Institute with failed state ranks and scores from Fund for Peace, "Failed States Index," at www.fundforpeace.org/web, updated 2012; population, population growth, fertility, population under 15, infant mortality, and life expectancy from U.N. Population Division, *World Population Prospects: The 2010 Revision*, electronic database, at esa.un.org/unpd/wpp/index.htm, updated 3 May 2011; share urban from U.N. Population Division, *World Urbanization Prospects: The 2011 Revision Population Database*, at esa.un.org/unpd/wup/unup, updated 26 April 2012.

This is part of a supporting dataset for Lester R. Brown, **Full Planet, Empty Plates: The New Geopolitics of Food Scarcity** (New York: W.W. Norton & Company, 2012). For more information, see Earth Policy Institute on-line at www.earth-policy.org.

Social Indicators for Top Strong States, 2012

Country	Failed State Rank (2012) ¹	Failed State Score (2012) ¹	GDP Per Capita (2012) Current PPP-Adjusted Dollars ²	Undernourished Population (2006-2008) Percent	Net Imports as a Share of Grain Consumption ³ (Latest Year) Percent ⁴	Recipient of WFP Food Aid (2012)	Primary School Net Enrollment (Latest Year) Percent ⁵	Adult Literacy Rate (Latest Year) Percent
Finland	177	20.0	36,236	<5	-11	No	98	-
Sweden	176	21.3	40,394	<5	-16	No	99	-
Denmark	175	23.0	37,152	<5	-11	No	96	-
Switzerland	174	23.3	43,370	<5	43	No	99	-
Norway	173	23.9	53,471	<5	35	No	99	-
Luxembourg	172	25.5	80,119	<5	19	No	97	-
New Zealand	171	25.6	27,668	<5	38	No	99	-
Ireland	170	26.5	39,639	<5	35	No	100	-
Canada	169	26.8	40,541	<5	-63	No	-	-
Austria	168	27.5	41,822	<5	3	No	-	-
Netherlands	167	28.1		<5	93	No	100	-
Iceland	166	29.1	38,061	<5	103	No	99	-
Australia	165	29.2	40,234	<5	-218	No	97	-
Germany	164	31.7	37,897	<5	-12	No	100	-
Belgium	163	33.5	37,737	<5	59	No	99	-
France	162	33.6	35,156	<5	-72	No	99	-
Slovenia	161	34.0	28,642	<5	39	No	97	100
Portugal	160	34.2	23,361	<5	80	No	99	95
United States	159	34.8	48,387	<5	-20	No	96	-
United Kingdom	158	35.3	36,090	<5	-1	No	100	-

Notes:

"-" indicates no data available.

¹ Failed state ranks and scores for 2012 are based on 2011 data.

² Purchasing-power-parity (PPP) adjustment attempts to make currency among different countries comparable based on the amount of currency required to purchase the same volume of goods in each country. The IMF expresses PPP-adjusted figures in international dollars, a theoretical currency that corresponds to nominal U.S. dollars.

³ Negative values indicate that the country is a net exporter of grain.

⁴ Figures for Austria, Belgium, Denmark, Finland, France, Iceland, Ireland, Luxembourg, the Netherlands, Portugal, Sweden, and the United Kingdom are based on 2009 FAO figures using the formula "Imports" minus "Exports" divided by "Domestic Supply." Figures for remaining countries are based on 2011 USDA figures for "Domestic Consumption."

⁵ Enrollment of the official age group for primary school as a percentage of the corresponding population.

Source: Compiled by Earth Policy Institute with failed state ranks and scores from Fund for Peace, "Failed States Index," at www.fundforpeace.org/web, updated 2012; GDP per capita from International Monetary Fund (IMF), World Economic Outlook Database, at www.imf.org/external/pubs/ft/weo/2012/01/weodata/index.aspx, updated 16 July 2012; undernourishment from U.N. Food and Agriculture Organization (FAO), "Food Security Statistics," at www.fao.org/economic/ess/ess-fs/fs-data/ess-fadata/en/, updated 31 October 2011; grain data for European Union members, Iceland, and Norway from U.N. Food and Agriculture Organization, *FAOSTAT*, electronic database, at faostat.fao.org, updated 21 July 2011; grain data for remaining countries from U.S. Department of Agriculture (USDA), *Production, Supply and Distribution*, electronic database, at www.fas.usda.gov/psdonline, updated 11 July 2012; WFP food aid recipients from U.N. World Food Programme (WFP), "Countries," at www.wfp.org/countries, viewed 7 August 2012; primary enrollment and literacy from UNESCO Institute for Statistics, *Data Centre*, electronic database, at stats.uis.unesco.org, viewed 7 August 2012.

This is part of a supporting dataset for Lester R. Brown, **Full Planet, Empty Plates: The New Geopolitics of Food Scarcity** (New York: W.W. Norton & Company, 2012). For more information, see Earth Policy Institute on-line at www.earth-policy.org.

Environmental Indicators for Top Strong States, 2012

Country	Failed State Rank (2012) ¹	Failed State Score (2012) ¹	Population Density (2012) Population per Square Kilometer	Livestock Density ² (2010) Animals per Square Kilometer	Arable Land (2009) Hectares per Person	Share of Total Land Area (2010) Percent	Annual Forest Area Change ³ (2005-2010) Percent	Total Renewable Water Resources (2010) Cubic Meters Per Person Per Year ⁴	Internal Renewable Water Resources (2010) Cubic Meters Per Person Per Year ⁴
Finland	177	20.0	16.0	3	0.44	73	0.0	20,503	19,944
Sweden	176	21.3	21.1	5	0.28	69	0.0	18,550	18,230
Denmark	175	23.0	129.8	41	0.44	13	0.4	1,081	1,081
Switzerland	174	23.3	187.3	53	0.05	31	0.4	6,981	5,271
Norway	173	23.9	12.9	11	0.17	33	0.8	78,231	78,231
Luxembourg	172	25.5	202.4	82	0.12	33	0.0	6,114	1,972
New Zealand	171	25.6	16.5	159	0.11	31	-0.1	74,863	74,863
Ireland	170	26.5	65.2	163	0.24	11	1.2	11,633	10,962
Canada	169	26.8	3.5	2	1.34	34	0.0	85,310	83,782
Austria	168	27.5	100.7	30	0.16	47	0.1	9,257	6,552
Netherlands	167	28.1	402.5	163	0.06	11	0.0	5,478	662
Iceland	166	29.1	3.2	6	0.02	n.s.	3.3	531,250	531,250
Australia	165	29.2	3.0	13	2.15	19	-0.6	22,094	22,094
Germany	164	31.7	229.7	43	0.15	32	0.0	1,871	1,300
Belgium	163	33.5	353.4	90	0.08	22	0.2	1,708	1,120
France	162	33.6	115.1	53	0.28	29	0.3	3,361	3,185
Slovenia	161	34.0	100.7	32	0.09	62	0.2	15,700	9,197
Portugal	160	34.2	116.3	52	0.11	38	0.1	6,435	3,559
United States	159	34.8	32.8	11	0.53	33	0.1	9,888	9,079
United Kingdom	158	35.3	258.5	169	0.10	12	0.3	2,361	2,328

Notes:

"n.s." (not significant) indicates a very small value.

¹ Failed state ranks and scores for 2012 are based on 2011 data.

² Livestock includes cattle, goats, and sheep.

³ Negative figures indicate forest area losses.

⁴ Regions where water supplies are less than 1,700 cubic meters per person per year are considered to be "water stressed," those where water supplies are less than 1,000 cubic meters per person per year are said to suffer from "water scarcity," and those with less than 500 cubic meters per person per year suffer from "absolute water scarcity."

Source: Compiled by Earth Policy Institute with failed state ranks and scores from Fund for Peace, "Failed States Index," at www.fundforpeace.org/web, updated 2012; population density from U.N. Population Division, *World Population Prospects: The 2010 Revision*, electronic database, at esa.un.org/unpd/wpp/index.htm, updated 3 May 2011; livestock from U.N. Food and Agriculture Organization (FAO), *FAOSTAT*, electronic database, at faostat.fao.org, updated 23 February 2012, with land area from Central Intelligence Agency, *The World Factbook*, online at www.cia.gov/library/publications, viewed 8 August 2012; arable land from World Bank, *World Development Indicators*, electronic database, at data.worldbank.org/indicator, viewed 8 August 2012; forest area and area change from FAO, *Global Forest Resources Assessment 2010: Global Tables* (Rome: 2010); renewable water resources from FAO, *AQUASTAT*, electronic database, at www.fao.org/nr/water/aquastat/data/query/index.html, viewed 8 August 2012; definitions of water stress and scarcity from United Nations, Water for Life Decade, "Water Scarcity," at www.un.org/waterforlifedecade/scarcity.html, viewed 8 August 2012.

This is part of a supporting dataset for Lester R. Brown, *Full Planet, Empty Plates: The New Geopolitics of Food Scarcity* (New York: W.W. Norton & Company, 2012). For more information, see Earth Policy Institute on-line at www.earth-policy.org.