

Full Planet, Empty Plates

Supporting Data for Chapter 9: China and the Soybean Challenge

[World Soybean Production, Area, and Yield, 1950-2011](#)

GRAPH: World Soybean Production, 1950-2011

GRAPH: World Soybean Area Harvested, 1950-2011

GRAPH: World Average Soybean Yields, 1950-2011

[World Soybean Meal Use for Feed, 1964-2011](#)

GRAPH: World Soybean Meal Use for Feed, 1964-2011

[Top 10 Producers, Consumers, Exporters, and Importers of Soybeans, 2011](#)

[Soybean Production, Consumption, and Imports in China, 1964-2011](#)

GRAPH: Soybean Production, Consumption, and Imports in China, 1964-2011

[Grain Production, Consumption, and Net Imports in China, 1960-2011](#)

GRAPH: Grain Production and Consumption in China, 1960-2011

GRAPH: Net Imports of Grain in China, 1960-2011

[Grain and Soybean Production in China, 1960-2011](#)

GRAPH: Grain and Soybean Production in China, 1960-2011

[Grain and Soybean Area Harvested in China, 1960-2011](#)

GRAPH: Grain and Soybean Area Harvested in China, 1960-2011

[Grain and Soybean Yields in China, 1960-2011](#)

GRAPH: Grain and Soybean Yields in China, 1960-2011

[Area Harvested for Wheat, Corn, and Soybeans in the Western Hemisphere, 1960-2011](#)

GRAPH: Area Harvested for Wheat, Corn, and Soybeans in the Western Hemisphere, 1960-2011

[Soybean Production, Area, and Yield in the United States, 1950-2011](#)

GRAPH: Soybean Production in the United States, 1950-2011

GRAPH: Soybean Area Harvested in the United States, 1950-2011

GRAPH: Soybean Yields in the United States, 1950-2011

[Soybean Production, Area, and Yield in Brazil, 1977-2011](#)

GRAPH: Soybean Production in Brazil, 1977-2011

GRAPH: Soybean Area Harvested in Brazil, 1977-2011

GRAPH: Soybean Yields in Brazil, 1977-2011

[Soybean Production, Area, and Yield in Argentina, 1977-2011](#)

GRAPH: Soybean Production in Argentina, 1977-2011

GRAPH: Soybean Area Harvested in Argentina, 1977-2011

GRAPH: Soybean Yields in Argentina, 1977-2011

[Loss of Forest Cover in the Brazilian Amazon, 1970-2011](#)

A full listing of data for the entire book is on-line at:

http://www.earth-policy.org/books/fpep/fpep_data

This is part of a supporting dataset for Lester R. Brown, **Full Planet, Empty Plates: The New Geopolitics of Food Scarcity** (New York: W.W. Norton & Company, 2012). For more information, see Earth Policy Institute on-line at www.earth-policy.org.

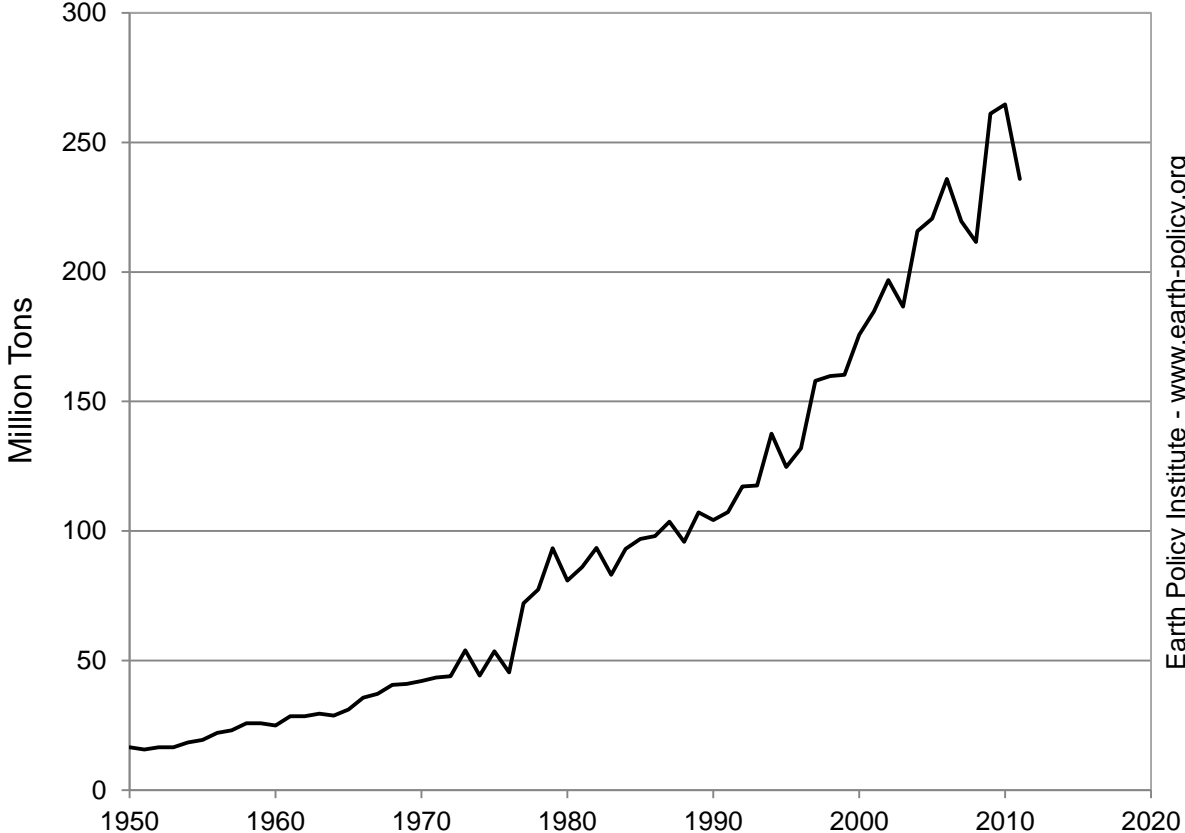
World Soybean Production, Area, and Yield, 1950-2011

Year	Production Million Tons	Area Harvested Million Hectares	Yield Tons per Hectare
1950	17	14	1.18
1951	16	15	1.07
1952	17	16	1.07
1953	17	16	1.04
1954	18	17	1.07
1955	19	21	0.94
1956	22	22	1.00
1957	23	23	1.00
1958	26	21	1.21
1959	26	22	1.18
1960	25	22	1.15
1961	29	27	1.06
1962	29	27	1.06
1963	29	28	1.07
1964	29	25	1.14
1965	31	25	1.23
1966	36	26	1.38
1967	37	27	1.35
1968	41	28	1.46
1969	41	28	1.46
1970	42	28	1.49
1971	43	28	1.53
1972	44	30	1.48
1973	54	34	1.60
1974	44	32	1.38
1975	54	32	1.65
1976	45	30	1.49
1977	72	43	1.66
1978	77	47	1.64
1979	93	51	1.82
1980	81	50	1.63
1981	86	50	1.72
1982	93	52	1.80
1983	83	51	1.64
1984	93	54	1.73
1985	97	52	1.87
1986	98	52	1.90
1987	104	54	1.92
1988	96	56	1.72
1989	107	58	1.84
1990	104	54	1.92
1991	107	55	1.95
1992	117	57	2.07
1993	118	60	1.95
1994	138	62	2.21
1995	125	61	2.04
1996	132	62	2.11
1997	158	69	2.30
1998	160	71	2.24
1999	160	72	2.23
2000	176	75	2.33
2001	185	79	2.33
2002	197	81	2.42
2003	187	88	2.11
2004	216	93	2.32
2005	221	93	2.38
2006	236	94	2.50
2007	220	91	2.42
2008	212	96	2.20
2009	261	102	2.56
2010	265	103	2.57
2011	236	102	2.31

Source: Compiled by Earth Policy Institute, with 1950-1963 from U.S. Department of Agriculture (USDA), in Worldwatch Institute, *Signposts 2001*, CD-ROM (Washington, DC: 2001); and with 1964-2011 from USDA, *Production, Supply and Distribution*, electronic database, at www.fas.usda.gov/psdonline, updated 11 July 2012.

This is part of a supporting dataset for Lester R. Brown, **Full Planet, Empty Plates: The New Geopolitics of Food Scarcity** (New York: W.W. Norton & Company, 2012). For more information, see Earth Policy Institute on-line at www.earth-policy.org.

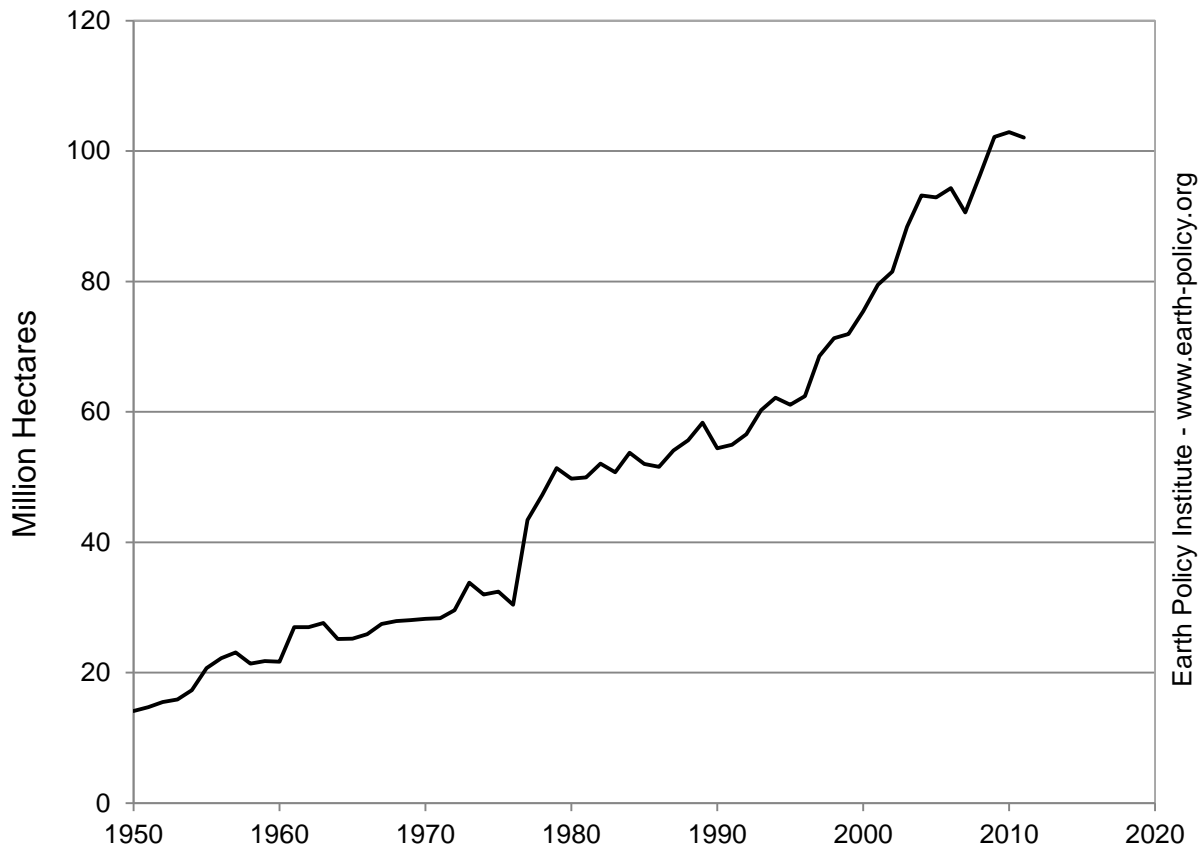
World Soybean Production, 1950-2011



Source: Worldwatch, USDA

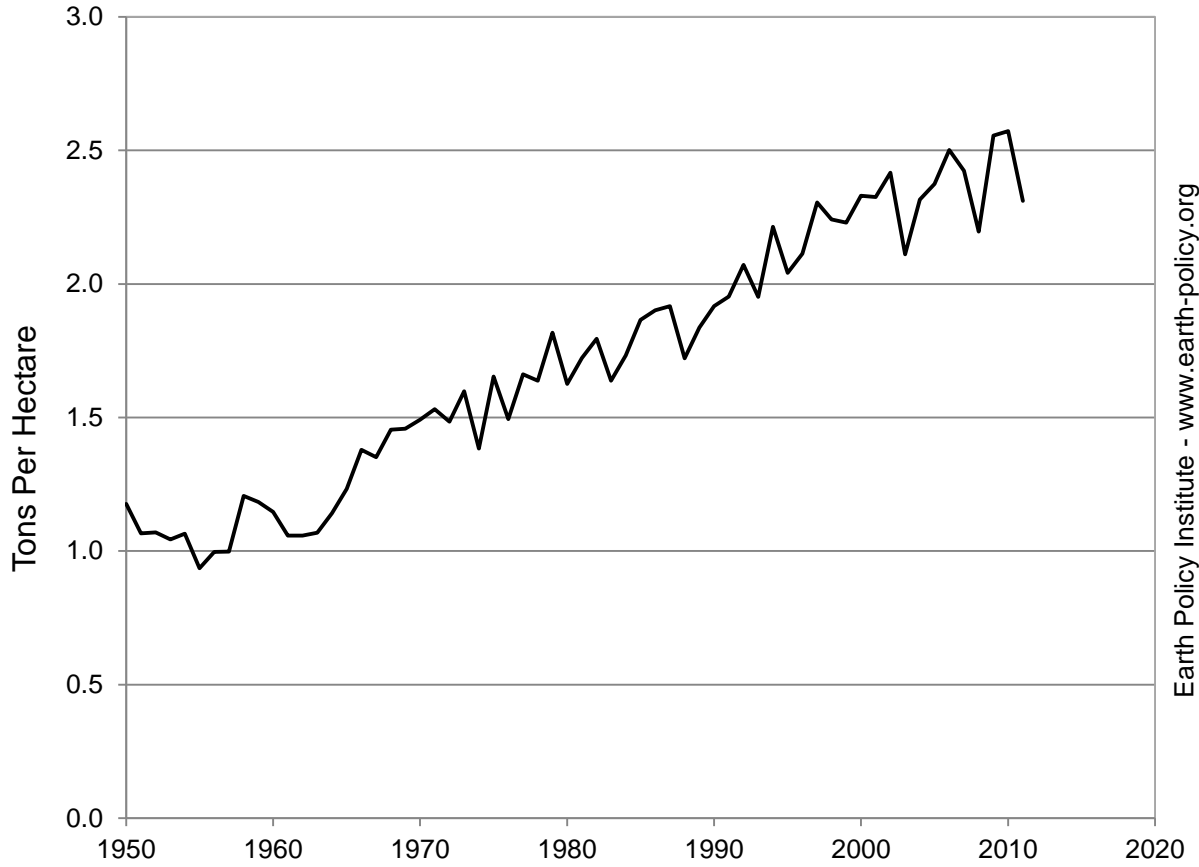
Earth Policy Institute - www.earth-policy.org

World Soybean Area Harvested, 1950-2011



Source: Worldwatch, USDA

World Average Soybean Yields, 1950-2011



Source: Worldwatch, USDA

Earth Policy Institute - www.earth-policy.org

World Soybean Meal Use for Feed, 1964-2011

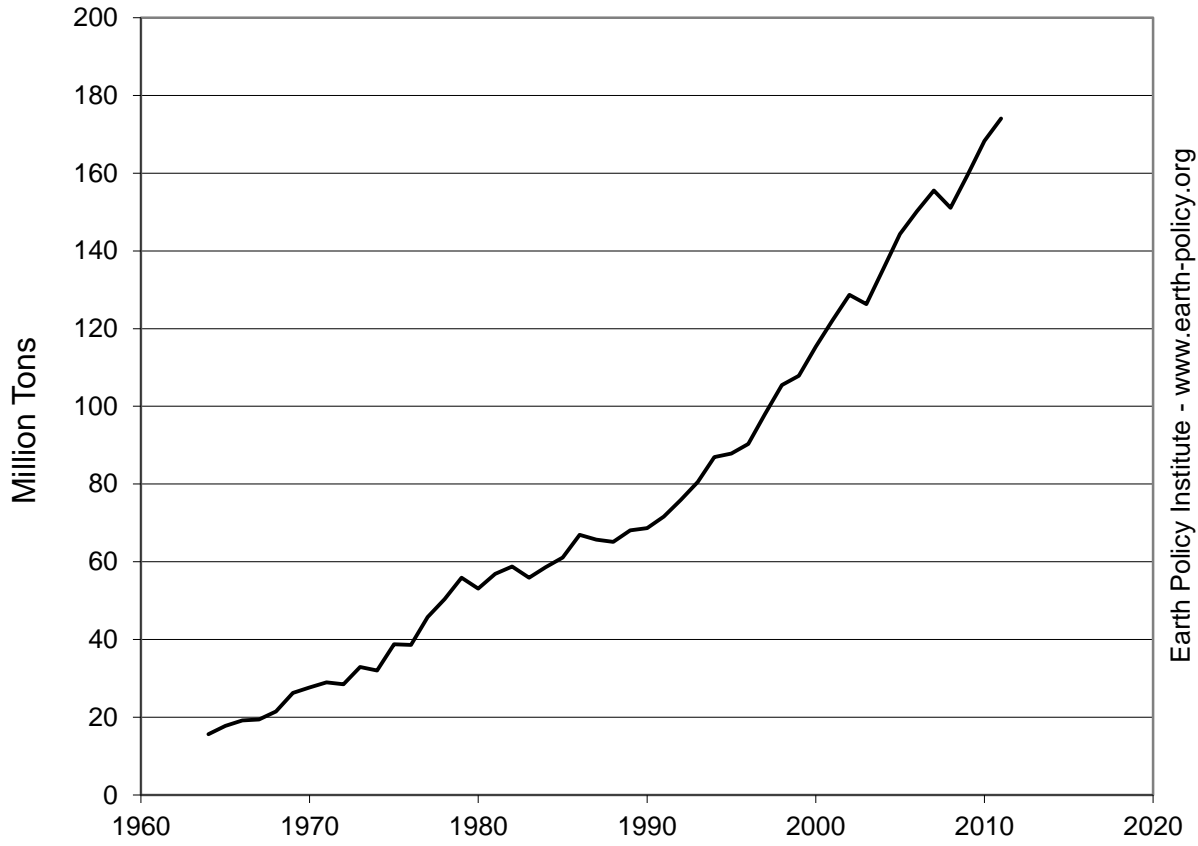
Year	Feed Use Million Tons
1964	16
1965	18
1966	19
1967	19
1968	21
1969	26
1970	28
1971	29
1972	28
1973	33
1974	32
1975	39
1976	39
1977	46
1978	50
1979	56
1980	53
1981	57
1982	59
1983	56
1984	59
1985	61
1986	67
1987	66
1988	65
1989	68
1990	69
1991	72
1992	76
1993	80
1994	87
1995	88
1996	90
1997	98
1998	105
1999	108
2000	115
2001	122
2002	129
2003	126
2004	135
2005	144
2006	150
2007	156
2008	151
2009	159
2010	168
2011	174

Note: Includes waste.

Source: Compiled by Earth Policy Institute from U.S. Department of Agriculture, *Production, Supply and Distribution*, electronic database, at www.fas.usda.gov/psdonline, updated 10 May 2012.

This is part of a supporting dataset for Lester R. Brown, **Full Planet, Empty Plates: The New Geopolitics of Food Scarcity** (New York: W.W. Norton & Company, 2012). For more information, see Earth Policy Institute on-line at www.earth-policy.org.

World Soybean Meal Use for Feed, 1964-2011



Source: USDA

Earth Policy Institute - www.earth-policy.org

Top 10 Producers, Consumers, Exporters, and Importers of Soybeans, 2011

Producers			Consumers			Exporters			Importers		
Rank	Country	Quantity	Rank	Country	Quantity	Rank	Country	Quantity	Rank	Country	Quantity
		Million Tons			Million Tons			Million Tons			Million Tons
1	United States	83.2	1	China	70.8	1	United States	36.7	1	China	57.5
2	Brazil	65.5	2	United States	48.8	2	Brazil	36.7	2	European Union	11.0
3	Argentina	41.0	3	Brazil	39.5	3	Argentina	7.8	3	Mexico	3.4
4	China	13.5	4	Argentina	37.8	4	Paraguay	3.1	4	Japan	2.7
5	India	11.0	5	European Union	12.4	5	Canada	2.8	5	Taiwan	2.3
6	Canada	4.2	6	India	11.2	6	Uruguay	1.6	6	Indonesia	2.0
7	Paraguay	4.0	7	Mexico	3.6	7	Ukraine	1.3	7	Thailand	1.9
8	Bolivia	2.2	8	Japan	3.0	8	China	0.3	8	Egypt	1.6
9	Ukraine	2.2	9	Indonesia	2.6	9	South Africa	0.1	9	Vietnam	1.2
10	Russia	1.7	10	Russia	2.4	10	Croatia	0.0	10	Turkey	1.1
	Rest of World	7.5		Rest of World	21.9		Rest of World	0.2		Rest of World	5.5
	Total	236.0		Total	253.8		Total	90.5		Total	90.1

Source: Compiled by Earth Policy Institute from U.S. Department of Agriculture, *Production, Supply and Distribution*, electronic database, at www.fas.usda.gov/psdonline, updated 10 August 2012.

This is part of a supporting dataset for Lester R. Brown, **Full Planet, Empty Plates: The New Geopolitics of Food Scarcity** (New York: W.W. Norton & Company, 2012). For more information, see Earth Policy Institute on-line at www.earth-policy.org.

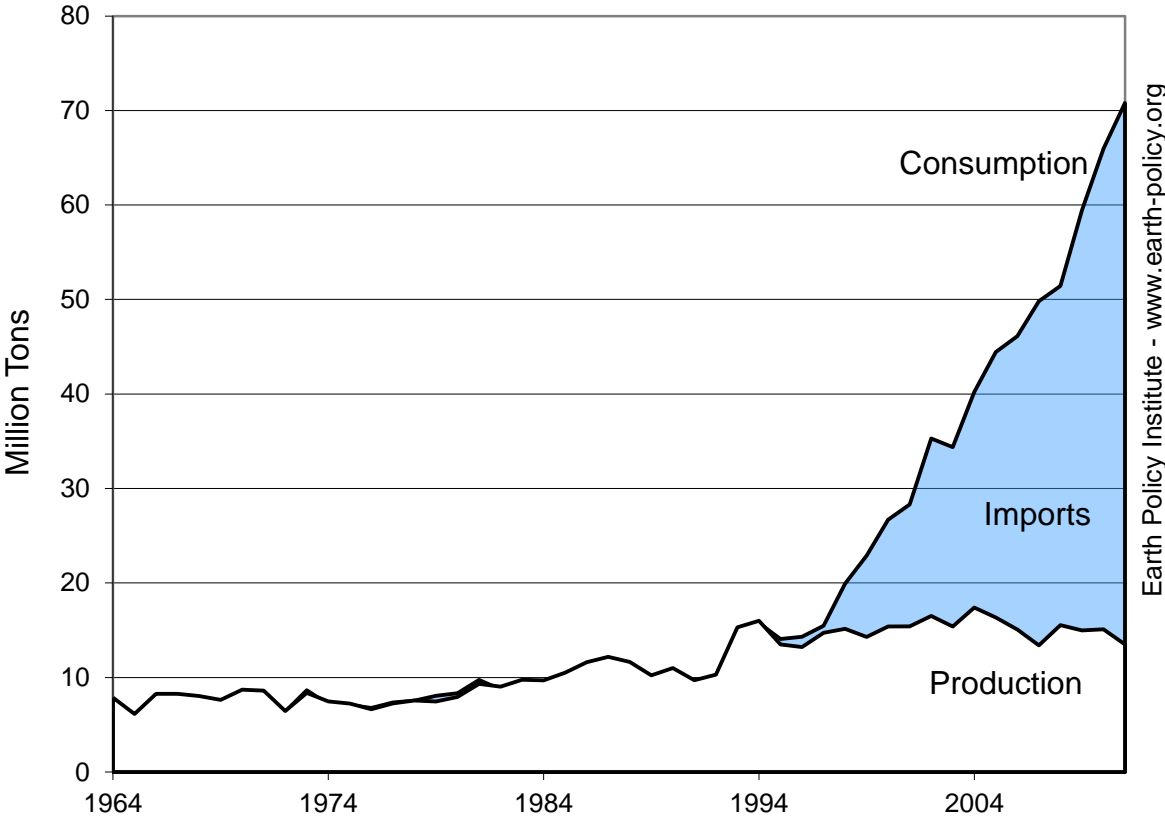
Soybean Production, Consumption, and Imports in China, 1964-2011

Year	Production	Consumption	Imports
	Million Tons		
1964	7.9	7.3	0.0
1965	6.1	5.6	0.0
1966	8.3	7.7	0.0
1967	8.3	7.7	0.0
1968	8.0	7.6	0.0
1969	7.6	7.2	0.0
1970	8.7	8.3	0.0
1971	8.6	8.2	0.0
1972	6.5	6.4	0.3
1973	8.4	8.6	0.6
1974	7.5	7.2	0.0
1975	7.2	7.1	0.0
1976	6.6	6.8	0.3
1977	7.3	7.4	0.2
1978	7.6	7.6	0.3
1979	7.5	8.1	0.8
1980	7.9	8.3	0.5
1981	9.3	9.7	0.5
1982	9.0	8.7	0.0
1983	9.8	9.0	0.0
1984	9.7	8.6	0.0
1985	10.5	9.5	0.3
1986	11.6	10.1	0.2
1987	12.2	10.9	0.2
1988	11.6	10.5	0.0
1989	10.2	9.1	0.0
1990	11.0	9.7	0.0
1991	9.7	8.8	0.1
1992	10.3	10.2	0.2
1993	15.3	14.3	0.1
1994	16.0	15.8	0.2
1995	13.5	14.1	0.8
1996	13.2	14.3	2.3
1997	14.7	15.5	2.9
1998	15.2	19.9	3.9
1999	14.3	22.9	10.1
2000	15.4	26.7	13.2
2001	15.4	28.3	10.4
2002	16.5	35.3	21.4
2003	15.4	34.4	16.9
2004	17.4	40.2	25.8
2005	16.4	44.4	28.3
2006	15.1	46.1	28.7
2007	13.4	49.8	37.8
2008	15.5	51.4	41.1
2009	15.0	59.4	50.3
2010	15.1	66.0	52.3
2011	13.5	70.8	57.5

Source: Compiled by Earth Policy Institute from U.S. Department of Agriculture, *Production, Supply and Distribution*, electronic database, at www.fas.usda.gov/psdonline, updated 10 August 2012.

This is part of a supporting dataset for Lester R. Brown, **Full Planet, Empty Plates: The New Geopolitics of Food Scarcity** (New York: W.W. Norton & Company, 2012). For more information, see Earth Policy Institute on-line at www.earth-policy.org.

Soybean Production, Consumption, and Imports in China, 1964-2011



Source: USDA

Earth Policy Institute - www.earth-policy.org

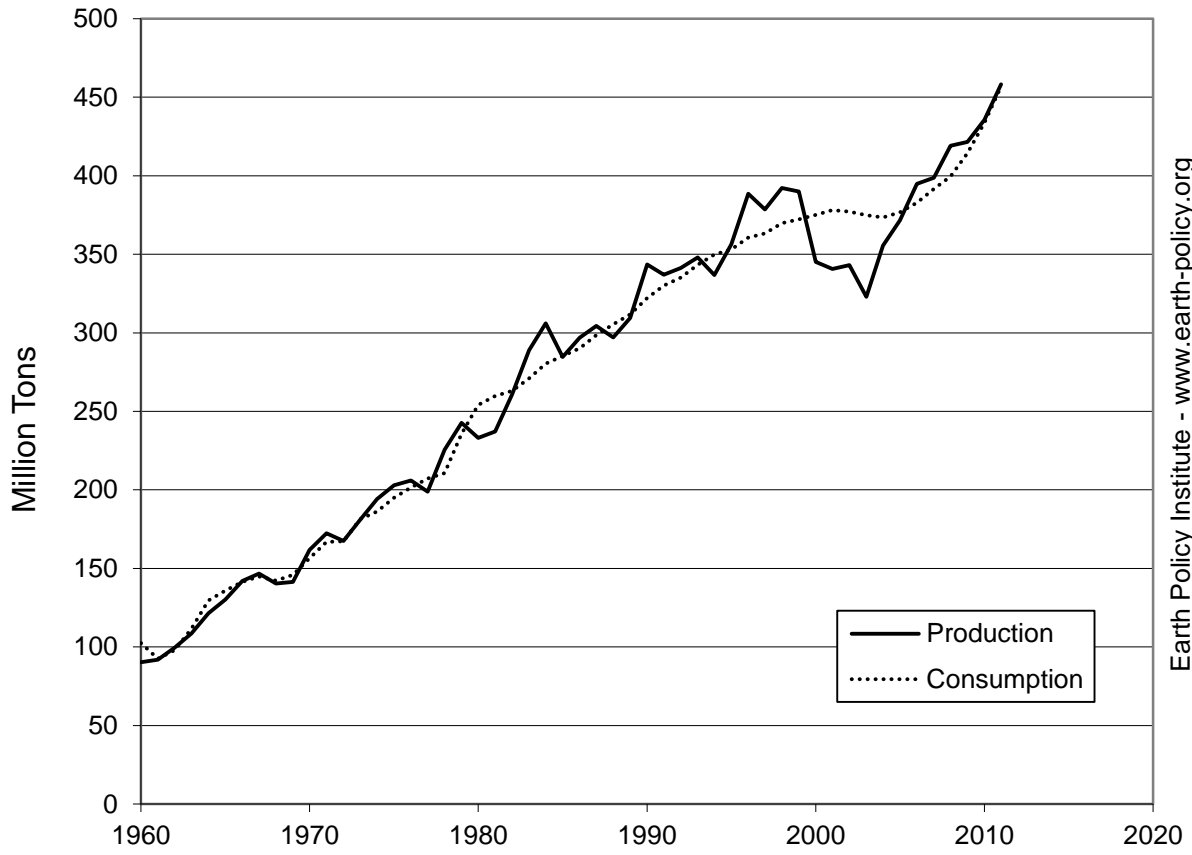
Grain Production, Consumption, and Net Imports in China, 1960-2011

Year	Production	Consumption	Net Imports
	Million Tons		
1960	90.3	102.4	2.2
1961	91.9	92.5	5.5
1962	99.6	97.9	4.4
1963	108.6	111.6	5.0
1964	121.4	129.7	4.0
1965	130.3	135.9	4.6
1966	141.9	141.3	3.4
1967	146.7	144.8	2.9
1968	140.3	142.2	2.3
1969	141.4	145.8	3.8
1970	161.7	156.4	2.3
1971	172.3	166.8	1.6
1972	167.6	167.3	3.3
1973	180.9	181.4	5.5
1974	194.2	186.2	4.3
1975	202.8	195.0	1.1
1976	206.0	201.6	1.9
1977	198.9	207.2	7.1
1978	225.6	210.6	10.1
1979	242.6	235.8	9.7
1980	233.1	254.1	14.1
1981	237.1	259.8	14.2
1982	260.9	263.0	15.2
1983	288.8	271.0	8.5
1984	306.1	280.4	1.0
1985	284.6	285.1	-0.4
1986	296.8	290.1	5.9
1987	304.4	298.6	11.0
1988	297.1	305.4	11.2
1989	309.5	311.7	10.2
1990	343.4	322.1	2.5
1991	337.0	330.1	5.6
1992	341.2	335.1	-5.9
1993	348.0	343.4	-7.4
1994	336.7	349.9	16.7
1995	356.4	353.2	15.4
1996	388.5	360.6	-0.8
1997	378.4	363.3	-7.3
1998	392.3	369.7	-3.0
1999	390.0	372.3	-9.8
2000	345.1	375.0	-6.9
2001	340.6	378.2	-8.7
2002	343.1	377.2	-17.1
2003	323.0	374.9	-5.0
2004	355.6	373.4	0.0
2005	371.7	376.6	-2.3
2006	394.8	382.8	-7.6
2007	398.7	391.5	-3.4
2008	419.2	399.6	0.6
2009	421.5	414.5	3.8
2010	435.6	433.7	2.5
2011	458.3	456.8	10.0

Source: Compiled by Earth Policy Institute from U.S. Department of Agriculture, *Production, Supply and Distribution*, electronic database, at www.fas.usda.gov/psdonline, updated 10 August 2012.

This is part of a supporting dataset for Lester R. Brown, **Full Planet, Empty Plates: The New Geopolitics of Food Scarcity** (New York: W.W. Norton & Company, 2012). For more information, see Earth Policy Institute on-line at www.earth-policy.org.

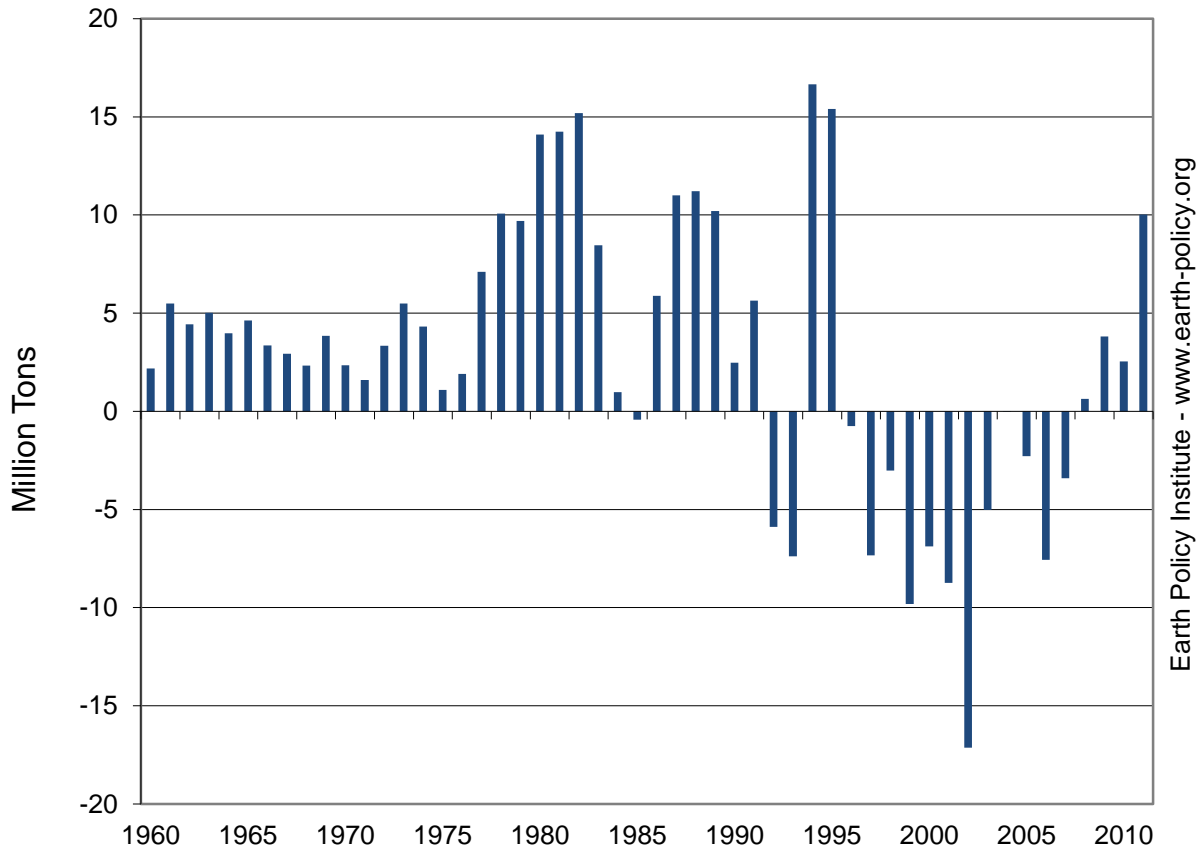
Grain Production and Consumption in China, 1960-2011



Source: USDA

Earth Policy Institute - www.earth-policy.org

Net Imports of Grain in China, 1960-2011



Source: EPI from USDA

Earth Policy Institute - www.earth-policy.org

Grain and Soybean Production in China, 1960-2011

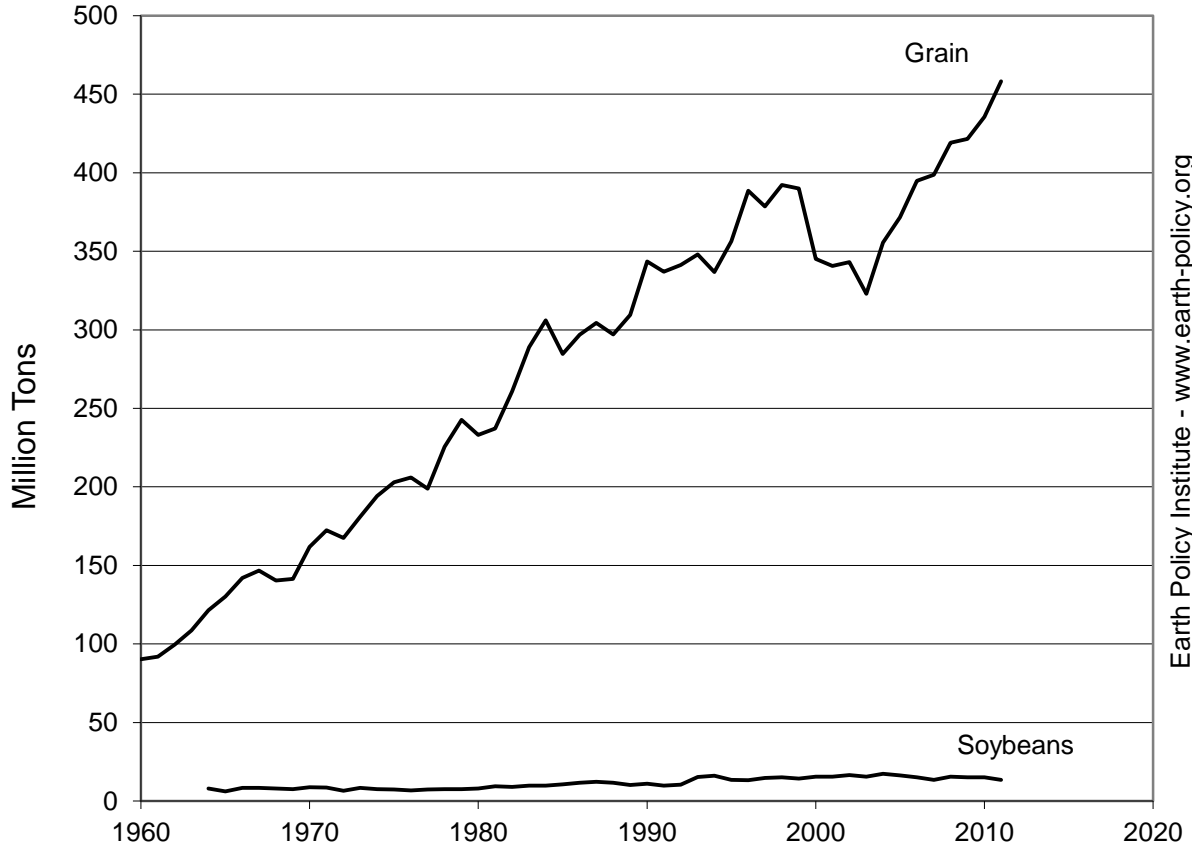
Year	Grain	Soybeans
	Million Tons	
1960	90.3	n.a.
1961	91.9	n.a.
1962	99.6	n.a.
1963	108.6	n.a.
1964	121.4	7.9
1965	130.3	6.1
1966	141.9	8.3
1967	146.7	8.3
1968	140.3	8.0
1969	141.4	7.6
1970	161.7	8.7
1971	172.3	8.6
1972	167.6	6.5
1973	180.9	8.4
1974	194.2	7.5
1975	202.8	7.2
1976	206.0	6.6
1977	198.9	7.3
1978	225.6	7.6
1979	242.6	7.5
1980	233.1	7.9
1981	237.1	9.3
1982	260.9	9.0
1983	288.8	9.8
1984	306.1	9.7
1985	284.6	10.5
1986	296.8	11.6
1987	304.4	12.2
1988	297.1	11.6
1989	309.5	10.2
1990	343.4	11.0
1991	337.0	9.7
1992	341.2	10.3
1993	348.0	15.3
1994	336.7	16.0
1995	356.4	13.5
1996	388.5	13.2
1997	378.4	14.7
1998	392.3	15.2
1999	390.0	14.3
2000	345.1	15.4
2001	340.6	15.4
2002	343.1	16.5
2003	323.0	15.4
2004	355.6	17.4
2005	371.7	16.4
2006	394.8	15.1
2007	398.7	13.4
2008	419.2	15.5
2009	421.5	15.0
2010	435.6	15.1
2011	458.3	13.5

Note: "n.a." indicates data not available.

Source: Compiled by Earth Policy Institute from U.S. Department of Agriculture, *Production, Supply and Distribution*, electronic database, at www.fas.usda.gov/psdonline, updated 10 August 2012.

This is part of a supporting dataset for Lester R. Brown, **Full Planet, Empty Plates: The New Geopolitics of Food Scarcity** (New York: W.W. Norton & Company, 2012). For more information, see Earth Policy Institute on-line at www.earth-policy.org.

Grain and Soybean Production in China, 1960-2011



Source: USDA

Earth Policy Institute - www.earth-policy.org

Grain and Soybean Area Harvested in China, 1960-2011

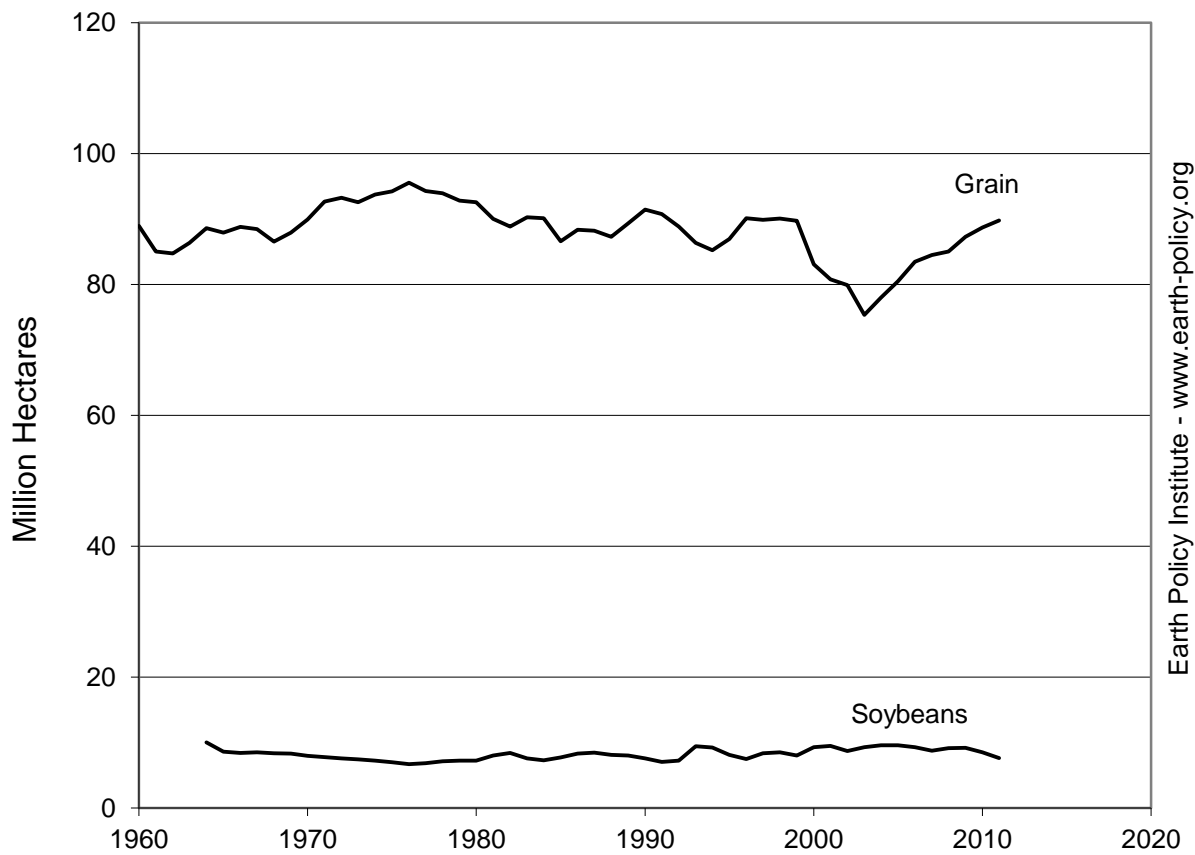
Year	Grain	Soybeans
	Million Hectares	
1960	89.0	n.a.
1961	85.0	n.a.
1962	84.8	n.a.
1963	86.4	n.a.
1964	88.6	10.0
1965	87.9	8.6
1966	88.8	8.4
1967	88.4	8.5
1968	86.5	8.4
1969	87.9	8.3
1970	89.9	8.0
1971	92.7	7.8
1972	93.3	7.6
1973	92.6	7.4
1974	93.7	7.3
1975	94.2	7.0
1976	95.6	6.7
1977	94.3	6.9
1978	93.9	7.1
1979	92.8	7.2
1980	92.6	7.2
1981	90.0	8.0
1982	88.9	8.4
1983	90.3	7.6
1984	90.1	7.3
1985	86.6	7.7
1986	88.3	8.3
1987	88.2	8.4
1988	87.3	8.1
1989	89.3	8.0
1990	91.4	7.6
1991	90.7	7.0
1992	88.9	7.2
1993	86.4	9.5
1994	85.2	9.2
1995	86.9	8.1
1996	90.1	7.5
1997	89.9	8.3
1998	90.1	8.5
1999	89.7	8.0
2000	83.1	9.3
2001	80.8	9.5
2002	79.9	8.7
2003	75.4	9.3
2004	78.0	9.6
2005	80.5	9.6
2006	83.5	9.3
2007	84.5	8.8
2008	85.1	9.1
2009	87.3	9.2
2010	88.7	8.5
2011	89.8	7.7

Note: "n.a." indicates data not available.

Source: Compiled by Earth Policy Institute from U.S. Department of Agriculture, *Production, Supply and Distribution*, electronic database, at www.fas.usda.gov/psdonline, updated 12 September 2012.

This is part of a supporting dataset for Lester R. Brown, **Full Planet, Empty Plates: The New Geopolitics of Food Scarcity** (New York: W.W. Norton & Company, 2012). For more information, see Earth Policy Institute on-line at www.earth-policy.org.

Grain and Soybean Area Harvested in China, 1960-2011



Source: USDA

Earth Policy Institute - www.earth-policy.org

Grain and Soybean Yields in China, 1960-2011

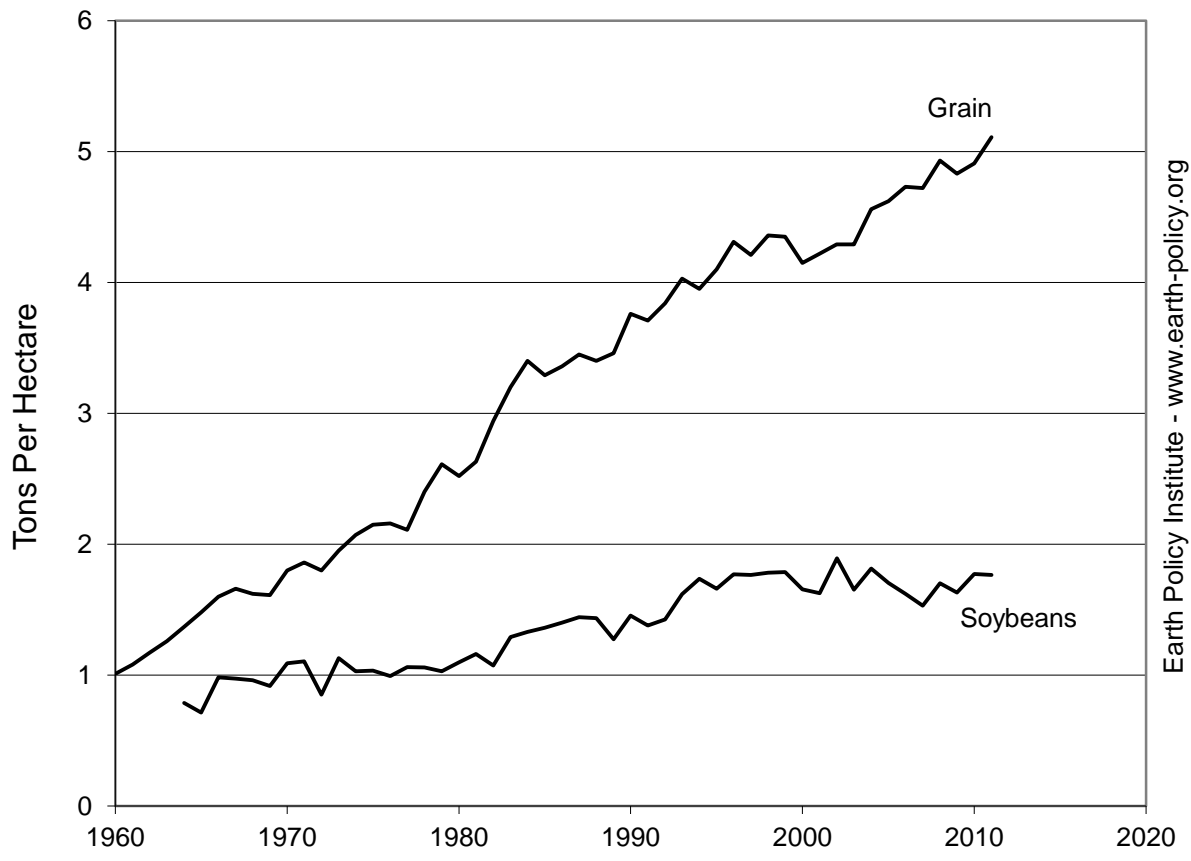
Year	Grain	Soybeans
	Tons Per Hectare	
1960	1.01	n.a.
1961	1.08	n.a.
1962	1.17	n.a.
1963	1.26	n.a.
1964	1.37	0.79
1965	1.48	0.71
1966	1.60	0.98
1967	1.66	0.97
1968	1.62	0.96
1969	1.61	0.92
1970	1.80	1.09
1971	1.86	1.11
1972	1.80	0.85
1973	1.95	1.13
1974	2.07	1.03
1975	2.15	1.03
1976	2.16	0.99
1977	2.11	1.06
1978	2.40	1.06
1979	2.61	1.03
1980	2.52	1.10
1981	2.63	1.16
1982	2.94	1.07
1983	3.20	1.29
1984	3.40	1.33
1985	3.29	1.36
1986	3.36	1.40
1987	3.45	1.44
1988	3.40	1.43
1989	3.46	1.27
1990	3.76	1.46
1991	3.71	1.38
1992	3.84	1.43
1993	4.03	1.62
1994	3.95	1.73
1995	4.10	1.66
1996	4.31	1.77
1997	4.21	1.76
1998	4.36	1.78
1999	4.35	1.79
2000	4.15	1.66
2001	4.22	1.63
2002	4.29	1.89
2003	4.29	1.65
2004	4.56	1.81
2005	4.62	1.70
2006	4.73	1.62
2007	4.72	1.53
2008	4.93	1.70
2009	4.83	1.63
2010	4.91	1.77
2011	5.11	1.76

Note: "n.a." indicates data not available.

Source: Compiled by Earth Policy Institute from U.S. Department of Agriculture, *Production, Supply and Distribution*, electronic database, at www.fas.usda.gov/psdonline, updated 12 September 2012.

This is part of a supporting dataset for Lester R. Brown, **Full Planet, Empty Plates: The New Geopolitics of Food Scarcity** (New York: W.W. Norton & Company, 2012). For more information, see Earth Policy Institute on-line at www.earth-policy.org.

Grain and Soybean Yields in China, 1960-2011



Source: USDA

Earth Policy Institute - www.earth-policy.org

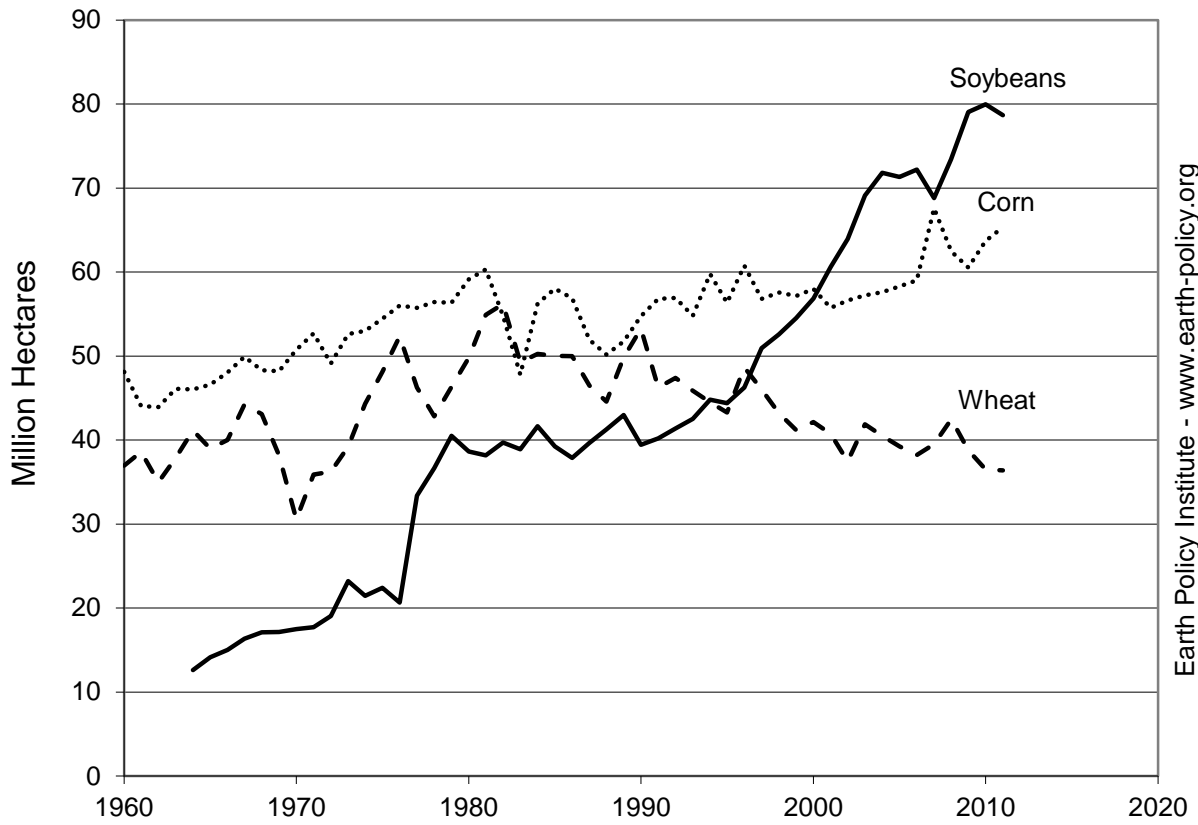
Area Harvested for Wheat, Corn, and Soybeans in the Western Hemisphere, 1960-2011

Year	Wheat	Corn	Soybeans
	Million Hectares		
1960	37	48	n.a.
1961	39	44	n.a.
1962	35	44	n.a.
1963	38	46	n.a.
1964	41	46	13
1965	39	47	14
1966	40	48	15
1967	44	50	16
1968	43	48	17
1969	38	48	17
1970	31	51	17
1971	36	53	18
1972	36	49	19
1973	39	53	23
1974	44	53	21
1975	48	54	22
1976	52	56	21
1977	46	56	33
1978	43	56	37
1979	46	56	41
1980	50	59	39
1981	55	60	38
1982	56	55	40
1983	49	48	39
1984	50	56	42
1985	50	58	39
1986	50	57	38
1987	46	52	40
1988	45	50	41
1989	50	52	43
1990	53	55	39
1991	46	57	40
1992	47	57	41
1993	46	55	43
1994	44	60	45
1995	43	56	44
1996	49	61	46
1997	46	57	51
1998	43	58	53
1999	41	57	55
2000	42	58	57
2001	41	56	61
2002	37	57	64
2003	42	57	69
2004	41	58	72
2005	39	58	71
2006	38	59	72
2007	40	68	69
2008	42	62	73
2009	39	61	79
2010	36	64	80
2011	36	65	79

Source: Compiled by Earth Policy Institute from U.S. Department of Agriculture, *Production, Supply and Distribution*, electronic database, at www.fas.usda.gov/psdonline, updated 10 May 2012.

This is part of a supporting dataset for Lester R. Brown, **Full Planet, Empty Plates: The New Geopolitics of Food Scarcity** (New York: W.W. Norton & Company, 2012). For more information, see Earth Policy Institute on-line at www.earth-policy.org.

Area Harvested for Wheat, Corn, and Soybeans in the Western Hemisphere, 1960-2011



Source: USDA

Earth Policy Institute - www.earth-policy.org

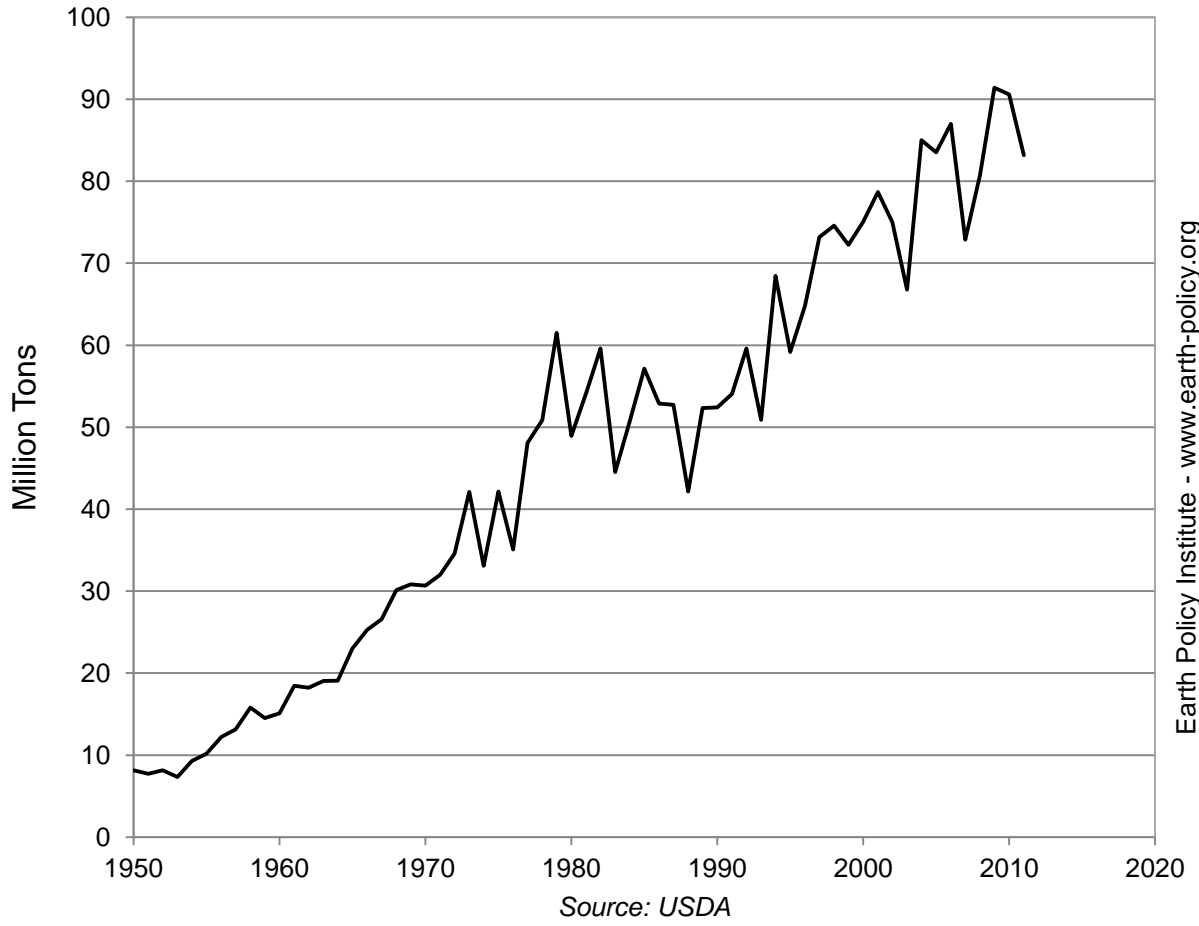
Soybean Production, Area, and Yield in the United States, 1950-2011

Year	Production Million Tons	Area Harvested Million Hectares	Yield Tons per Hectare
1950	8	6	1.46
1951	8	6	1.40
1952	8	6	1.39
1953	7	6	1.22
1954	9	7	1.35
1955	10	8	1.35
1956	12	8	1.47
1957	13	8	1.56
1958	16	10	1.63
1959	15	9	1.58
1960	15	10	1.58
1961	18	11	1.69
1962	18	11	1.63
1963	19	12	1.64
1964	19	12	1.53
1965	23	14	1.65
1966	25	15	1.71
1967	27	16	1.65
1968	30	17	1.80
1969	31	17	1.84
1970	31	17	1.79
1971	32	17	1.85
1972	35	18	1.87
1973	42	23	1.87
1974	33	21	1.59
1975	42	22	1.94
1976	35	20	1.75
1977	48	23	2.06
1978	51	26	1.97
1979	62	28	2.16
1980	49	27	1.78
1981	54	27	2.02
1982	60	28	2.12
1983	45	25	1.76
1984	51	27	1.89
1985	57	25	2.29
1986	53	24	2.24
1987	53	23	2.28
1988	42	23	1.82
1989	52	24	2.17
1990	52	23	2.29
1991	54	23	2.30
1992	60	24	2.53
1993	51	23	2.19
1994	68	25	2.78
1995	59	25	2.38
1996	65	26	2.53
1997	73	28	2.62
1998	75	29	2.62
1999	72	29	2.46
2000	75	29	2.56
2001	79	30	2.66
2002	75	29	2.56
2003	67	29	2.28
2004	85	30	2.84
2005	84	29	2.90
2006	87	30	2.88
2007	73	26	2.81
2008	81	30	2.67
2009	91	31	2.96
2010	91	31	2.92
2011	83	30	2.79

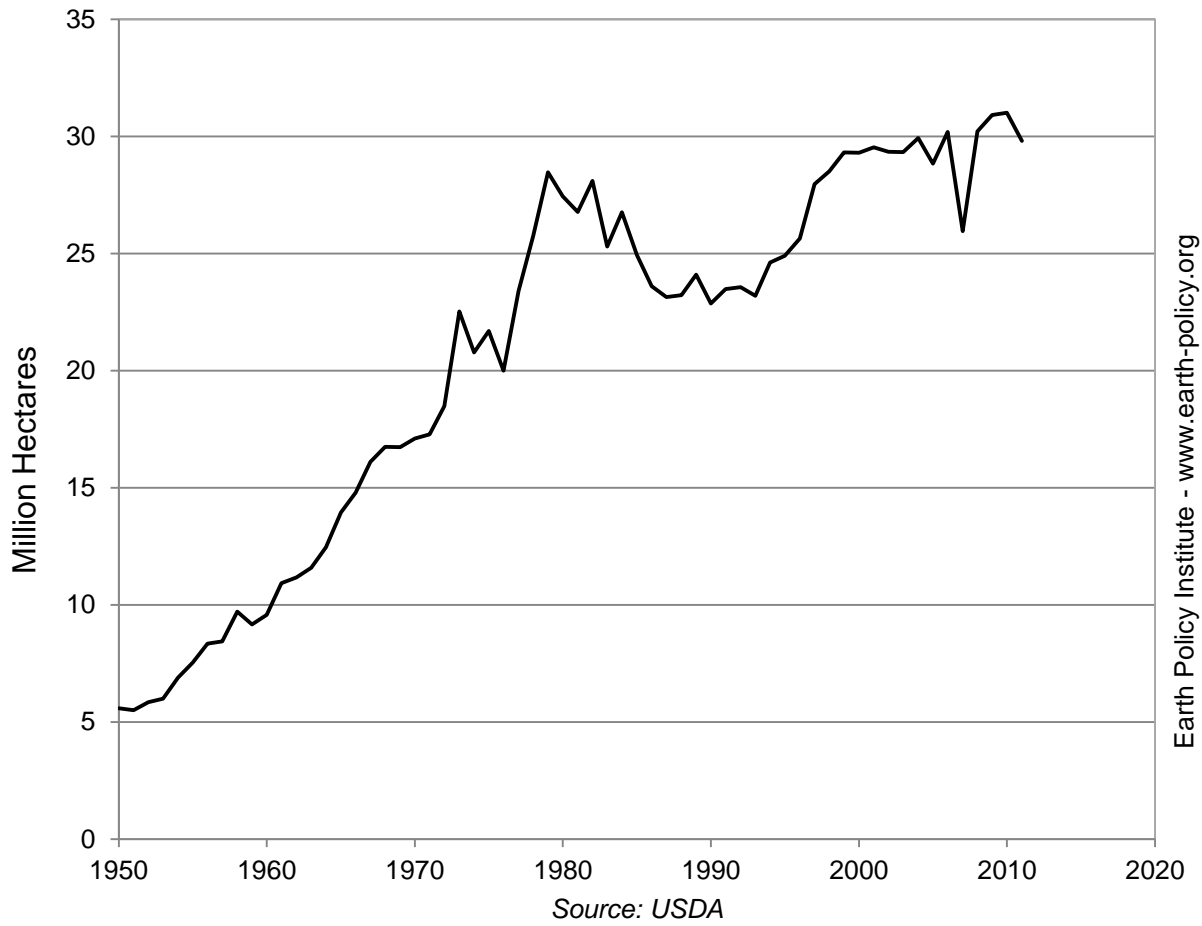
Source: Compiled by Earth Policy Institute with data for 1950-1959 from U.S. Department of Agriculture (USDA), National Agricultural Statistics Service, *Quick Stats 2.0*, electronic database, quickstats.nass.usda.gov, downloaded 29 March 2012; 1960-2011 from USDA, *Production, Supply and Distribution*, electronic database, at www.fas.usda.gov/psdonline, updated 11 July 2012.

This is part of a supporting dataset for Lester R. Brown, **Full Planet, Empty Plates: The New Geopolitics of Food Scarcity** (New York: W.W. Norton & Company, 2012). For more information, see Earth Policy Institute on-line at www.earth-policy.org.

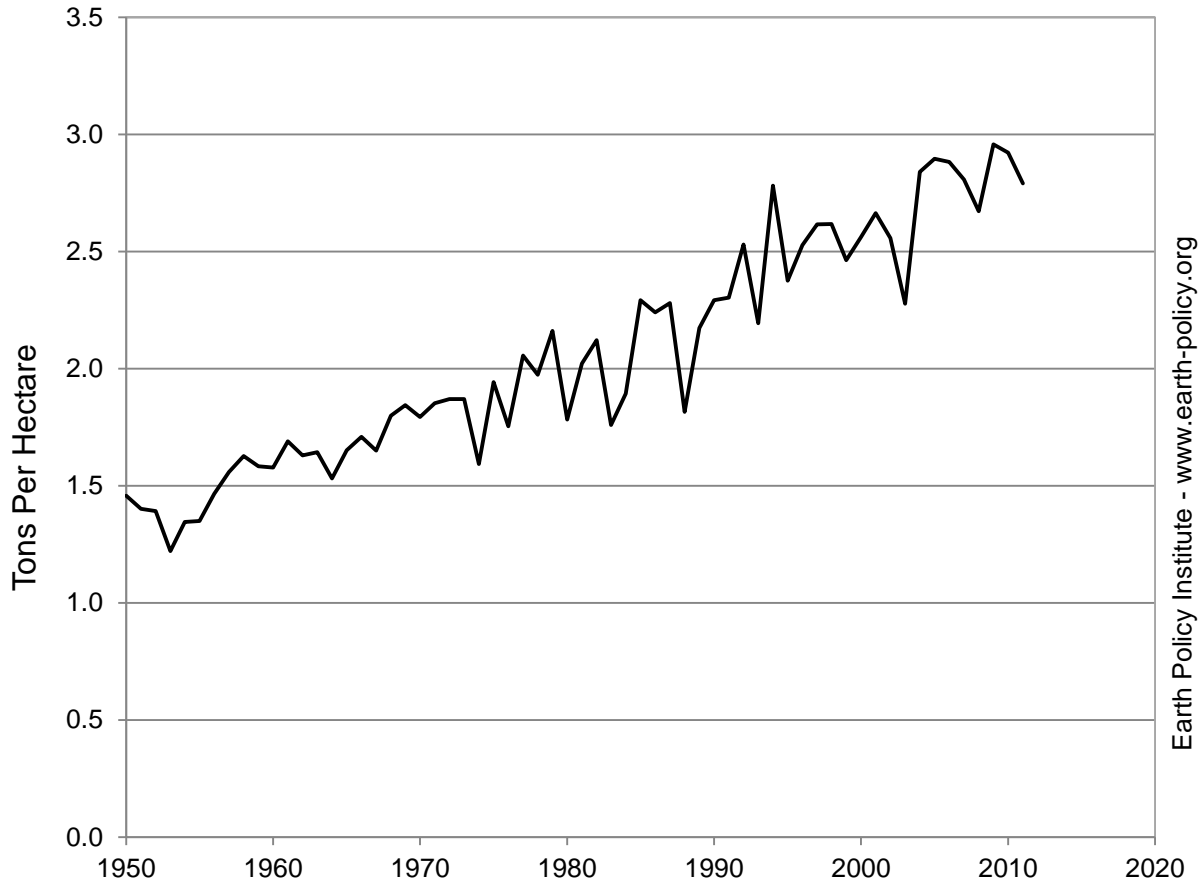
Soybean Production in the United States, 1950-2011



Soybean Area Harvested in the United States, 1950-2011



Soybean Yields in the United States, 1950-2011



Source: USDA

Earth Policy Institute - www.earth-policy.org

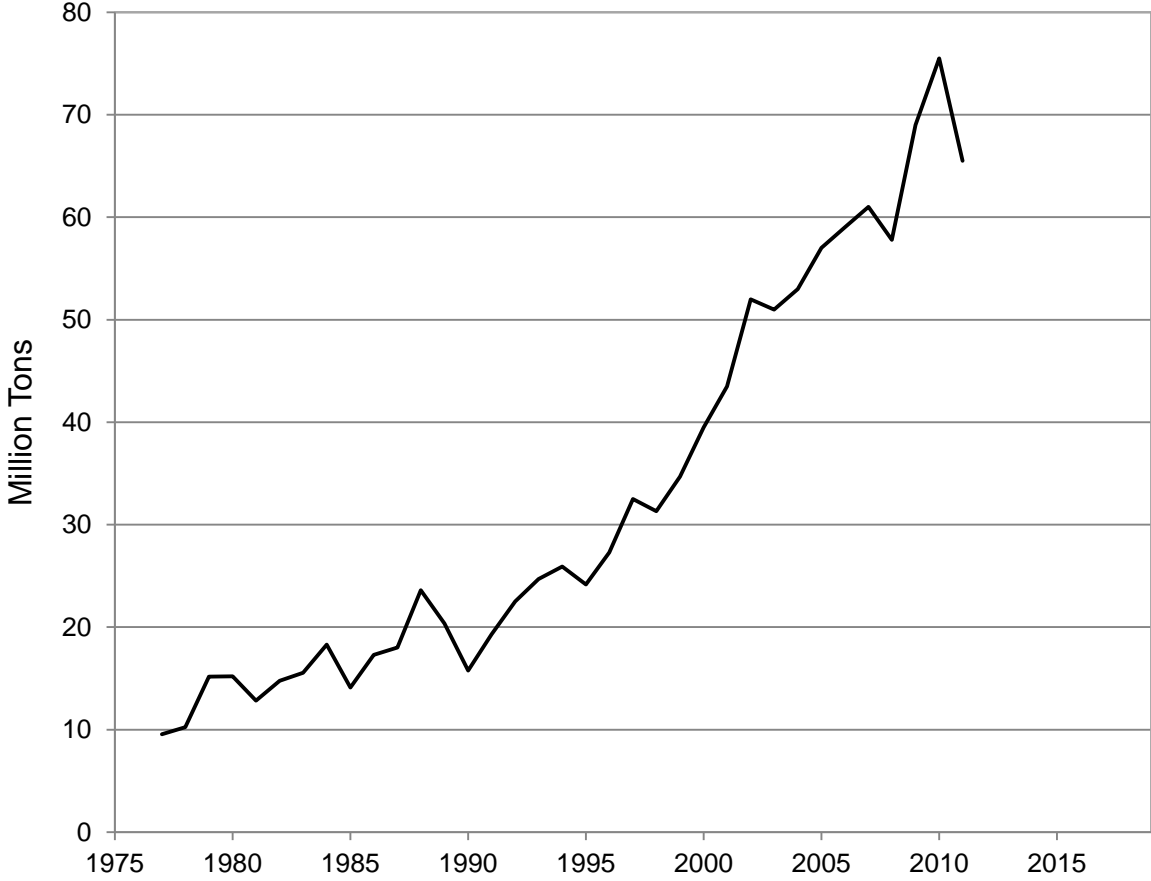
Soybean Production, Area, and Yield in Brazil, 1977-2011

Year	Production Million Tons	Area Harvested Million Hectares	Yield Tons Per Hectare
1977	10	8	1.23
1978	10	8	1.24
1979	15	9	1.73
1980	15	9	1.79
1981	13	8	1.56
1982	15	8	1.81
1983	16	9	1.65
1984	18	10	1.80
1985	14	9	1.49
1986	17	9	1.87
1987	18	11	1.71
1988	24	12	1.94
1989	20	12	1.76
1990	16	10	1.62
1991	19	10	1.99
1992	23	11	2.12
1993	25	11	2.16
1994	26	12	2.22
1995	24	11	2.21
1996	27	12	2.31
1997	33	13	2.50
1998	31	13	2.43
1999	35	14	2.55
2000	40	14	2.83
2001	44	16	2.66
2002	52	18	2.82
2003	51	22	2.37
2004	53	23	2.31
2005	57	22	2.56
2006	59	21	2.85
2007	61	21	2.86
2008	58	22	2.66
2009	69	24	2.94
2010	76	24	3.12
2011	66	25	2.62

Source: Compiled by Earth Policy Institute from U.S. Department of Agriculture, *Production, Supply and Distribution*, electronic database, at www.fas.usda.gov/psdonline, updated 11 July 2012.

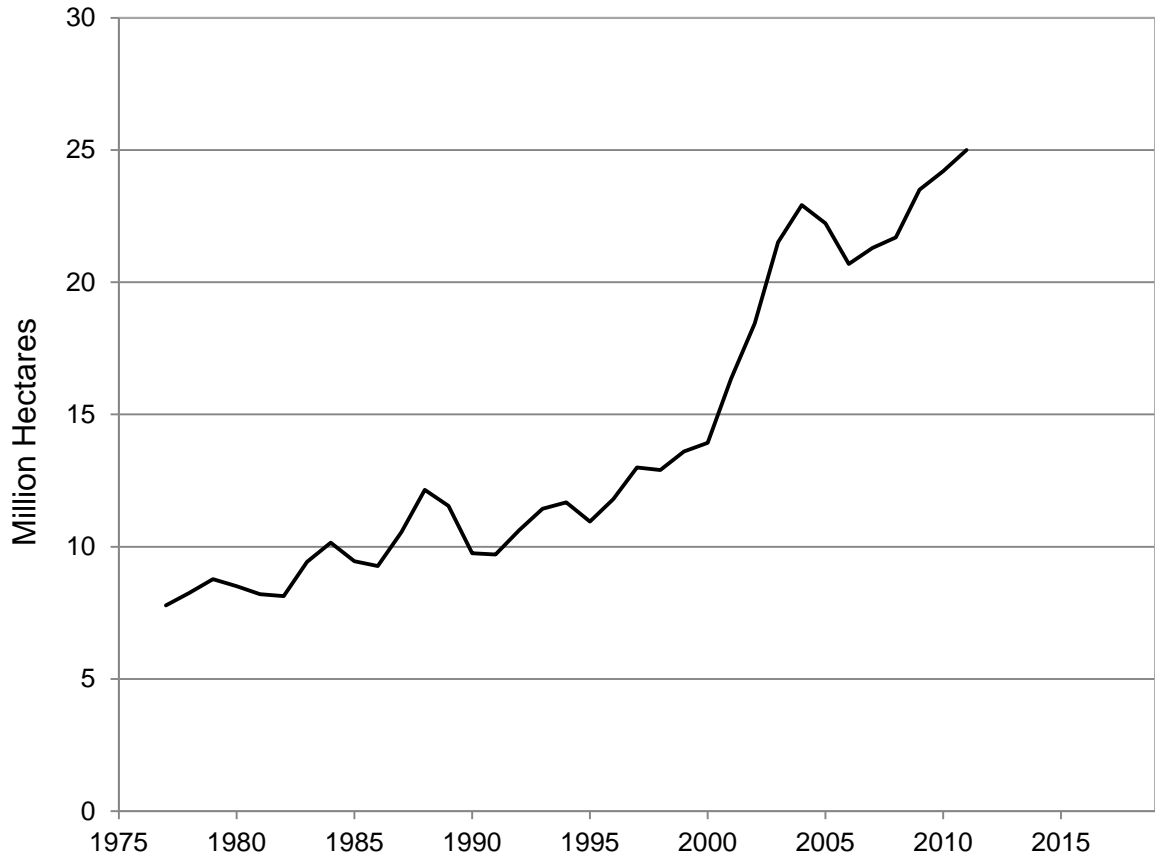
This is part of a supporting dataset for Lester R. Brown, **Full Planet, Empty Plates: The New Geopolitics of Food Scarcity** (New York: W.W. Norton & Company, 2012). For more information, see Earth Policy Institute on-line at www.earth-policy.org.

Soybean Production in Brazil, 1977-2011



Source: USDA

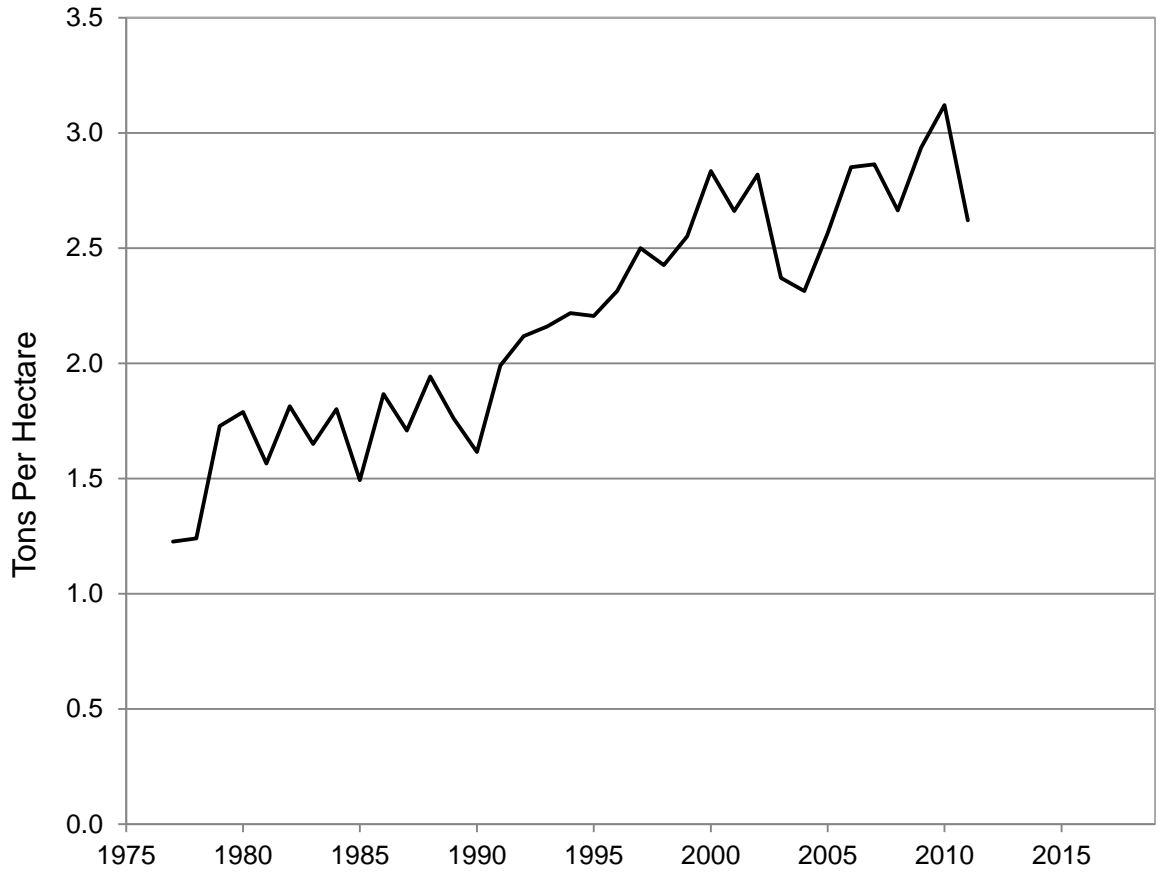
Soybean Area Harvested in Brazil, 1977-2011



Source: USDA

Earth Policy Institute - www.earth-policy.org

Soybean Yields in Brazil, 1977-2011



Source: USDA

Earth Policy Institute - www.earth-policy.org

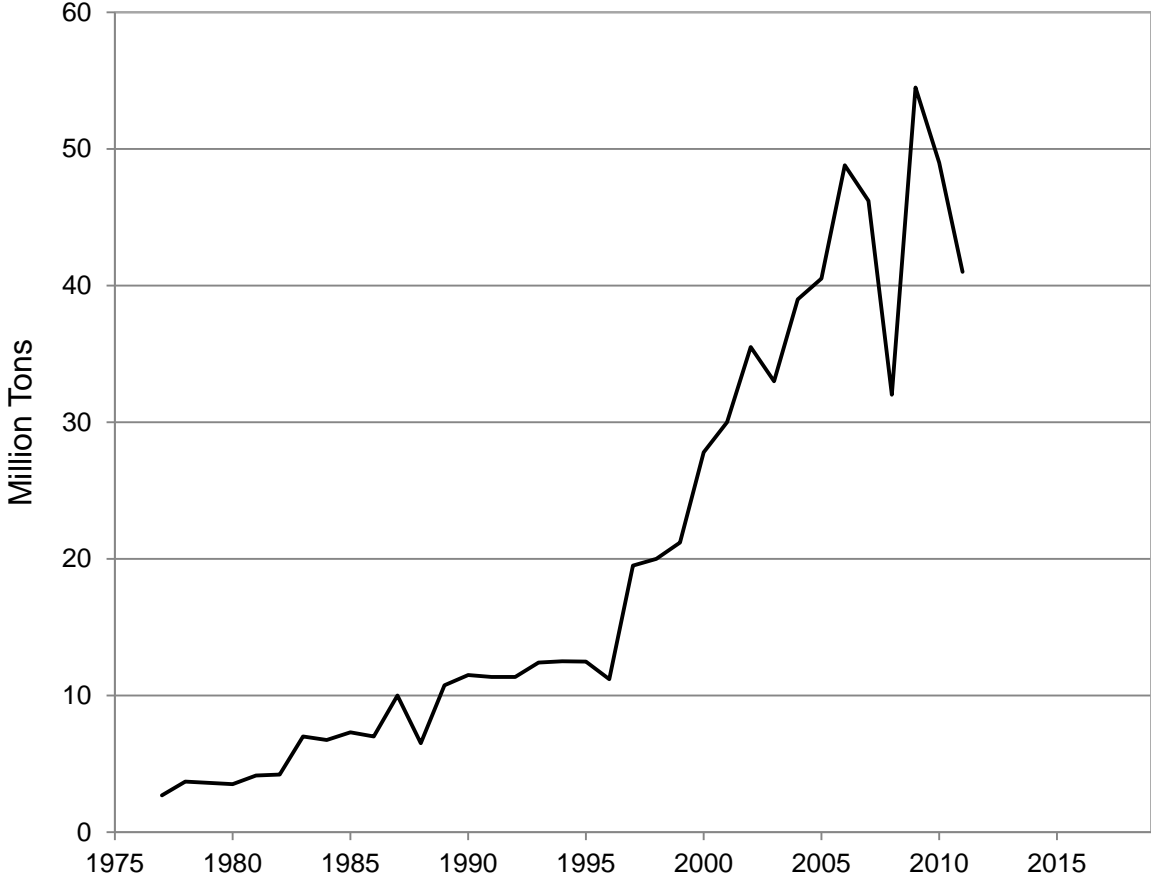
Soybean Production, Area, and Yield in Argentina, 1977-2011

Year	Production Million Tons	Area Harvested Million Hectares	Yield Tons per Hectare
1977	3	1	2.16
1978	4	2	2.31
1979	4	2	1.77
1980	4	2	2.01
1981	4	2	2.09
1982	4	2	1.84
1983	7	3	2.41
1984	7	3	2.06
1985	7	3	2.20
1986	7	4	1.99
1987	10	4	2.35
1988	7	4	1.63
1989	11	5	2.17
1990	12	5	2.42
1991	11	5	2.36
1992	11	5	2.32
1993	12	5	2.30
1994	13	6	2.19
1995	12	6	2.09
1996	11	6	1.81
1997	20	7	2.80
1998	20	8	2.45
1999	21	9	2.47
2000	28	10	2.67
2001	30	11	2.63
2002	36	13	2.82
2003	33	14	2.36
2004	39	14	2.71
2005	41	15	2.66
2006	49	16	2.99
2007	46	16	2.82
2008	32	16	2.00
2009	55	19	2.93
2010	49	18	2.68
2011	41	18	2.34

Source: Compiled by Earth Policy Institute from U.S. Department of Agriculture, *Production, Supply and Distribution*, electronic database, at www.fas.usda.gov/psdonline, updated 11 July 2012.

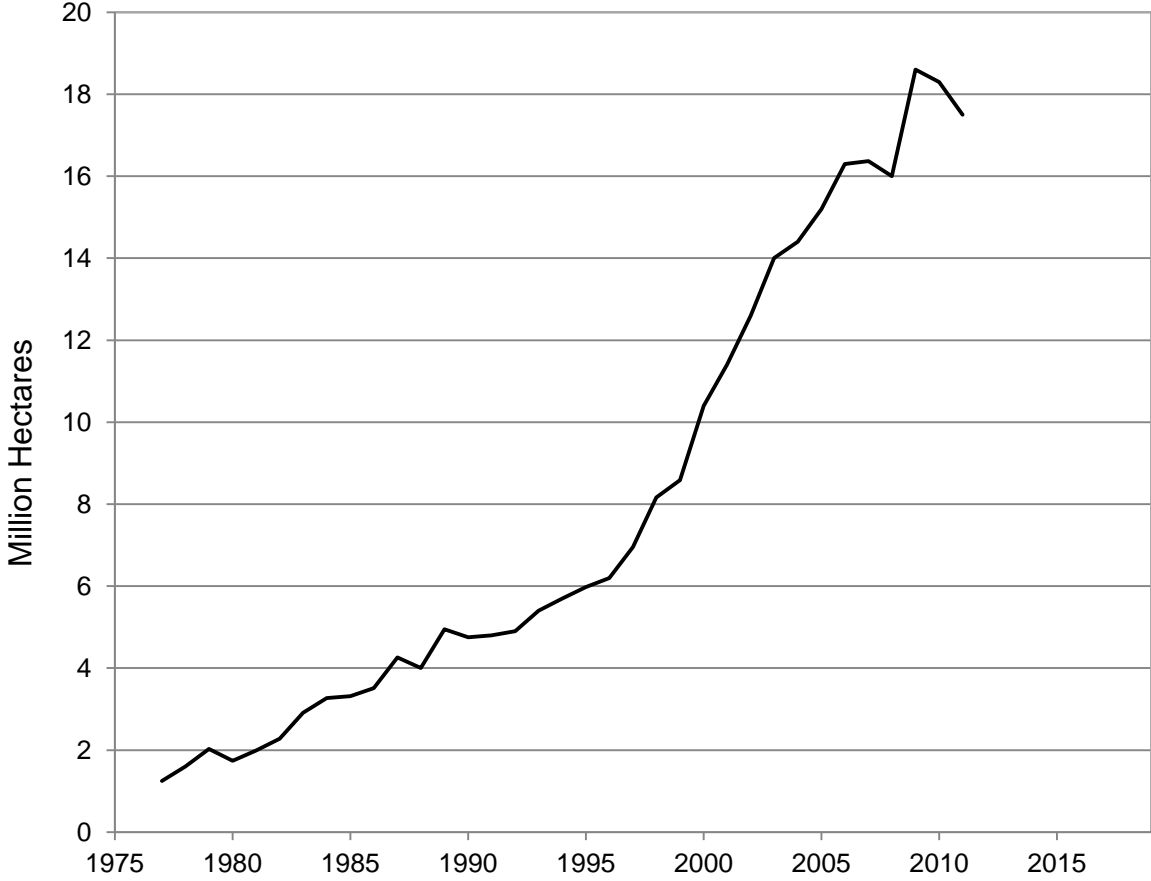
This is part of a supporting dataset for Lester R. Brown, **Full Planet, Empty Plates: The New Geopolitics of Food Scarcity** (New York: W.W. Norton & Company, 2012). For more information, see Earth Policy Institute on-line at www.earth-policy.org.

Soybean Production in Argentina, 1977-2011



Source: USDA

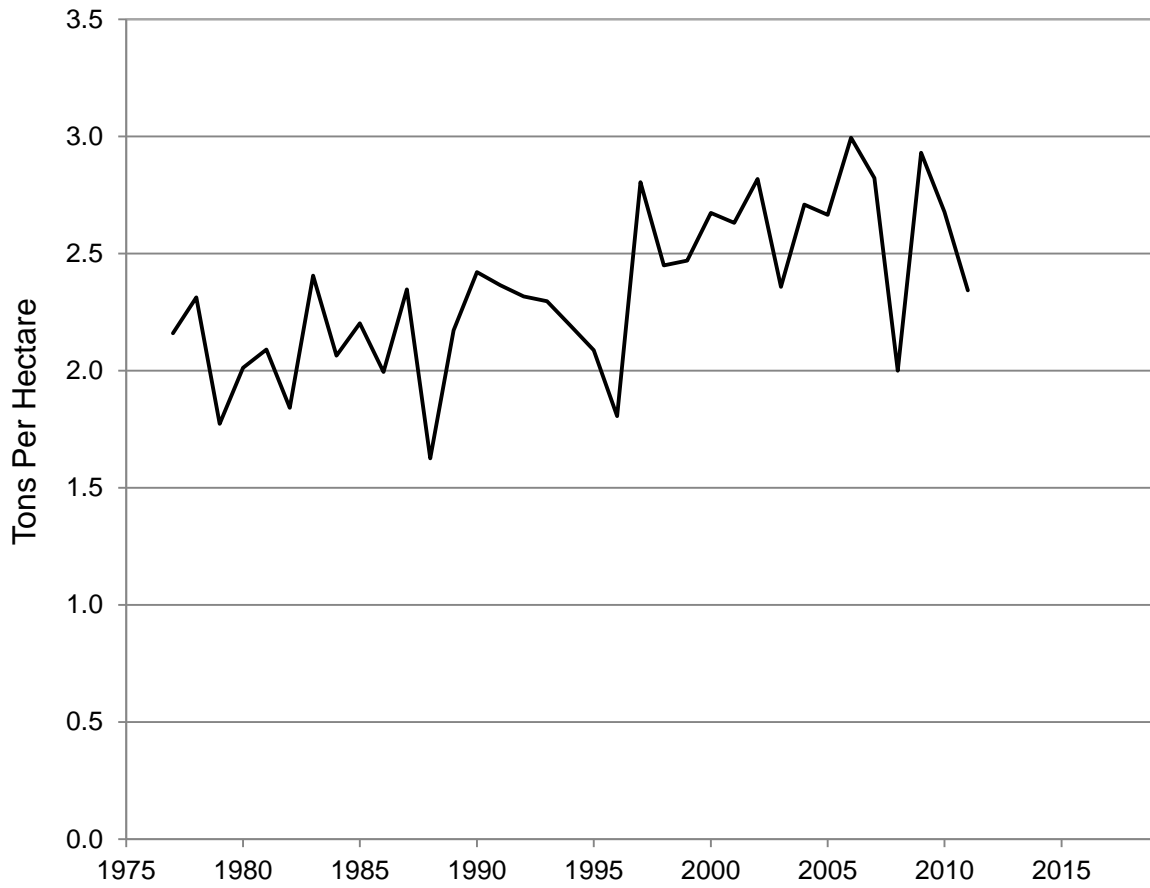
Soybean Area Harvested in Argentina, 1977-2011



Source: USDA

Earth Policy Institute - www.earth-policy.org

Soybean Yields in Argentina, 1977-2011



Source: USDA

Loss of Forest Cover in the Brazilian Amazon, 1970-2011

Year	Estimated Cover	Annual Loss	Total Loss Since 1970	Share of 1970 Cover Remaining
	Square Kilometers			Percent
1970	4,001,600	n.a	n.a.	100.0
...				
1988	3,625,120	21,050	376,480	90.6
1989	3,607,350	17,770	394,250	90.1
1990	3,593,620	13,730	407,980	89.8
1991	3,582,590	11,030	419,010	89.5
1992	3,568,804	13,786	432,796	89.2
1993	3,553,908	14,896	447,692	88.8
1994	3,539,012	14,896	462,588	88.4
1995	3,509,953	29,059	491,647	87.7
1996	3,491,792	18,161	509,808	87.3
1997	3,478,565	13,227	523,035	86.9
1998	3,461,182	17,383	540,418	86.5
1999	3,443,923	17,259	557,677	86.1
2000	3,425,697	18,226	575,903	85.6
2001	3,407,532	18,165	594,068	85.2
2002	3,385,881	21,651	615,719	84.6
2003	3,360,485	25,396	641,115	84.0
2004	3,332,713	27,772	668,887	83.3
2005	3,313,699	19,014	687,901	82.8
2006	3,299,413	14,286	702,187	82.5
2007	3,287,762	11,651	713,838	82.2
2008	3,274,851	12,911	726,749	81.8
2009	3,267,387	7,464	734,213	81.7
2010	3,260,387	7,000	741,213	81.5
2011	3,253,969	6,418	747,631	81.3

Note: Estimated forest cover figures are for the end of the corresponding year.

Source: Compiled by Earth Policy Institute with 1970-1987 data from Rhett A. Butler, "Calculating Deforestation Figures for the Amazon," Mongabay.com, viewed 27 June 2012; and with 1988-2011 annual forest loss data from Brazil National Institute for Space Research, "Taxas Anuais do Desmatamento - 1988 até 2011," at www.obt.inpe.br/prodes/prodes_1988_2011.htm, viewed 17 September 2012.

This is part of a supporting dataset for Lester R. Brown, **Full Planet, Empty Plates: The New Geopolitics of Food Scarcity** (New York: W.W. Norton & Company, 2012). For more information, see Earth Policy Institute on-line at www.earth-policy.org.