

## Plan B 4.0 - Supporting Data for Chapter 7

### [World Population, 1950-2008](#)

GRAPH: World Population, 1950-2008

### [World Population, 1950-2008, with Projections to 2050](#)

GRAPH: World Population, 1950-2008, with Projections to 2050

### [Life Expectancy for the World and Selected Regions, 1950-2005, with Projection to 2050](#)

GRAPH: Life Expectancy for the World, 1950-2005, with Projection to 2050

GRAPH: Life Expectancy in Africa, 1950-2005, with Projection to 2050

GRAPH: Life Expectancy in Sub-Saharan Africa, 1950-2005, with Projection to 2050

GRAPH: Life Expectancy in Asia, 1950-2005, with Projection to 2050

### [Gross Domestic Product for China and India, 1980-2008](#)

GRAPH: Gross Domestic Product for China and India, 1980-2008

### [Per Capita Gross Domestic Product for China and India, 1980-2008](#)

GRAPH: Per Capita Gross Domestic Product for China and India, 1980-2008

### [Global Wild Poliovirus Cases, 1985-2008](#)

GRAPH: Global Wild Poliovirus Cases, 1985-2008

### [Leading Causes of Death in the World, 2004](#)

### [Official Development Assistance from Development Assistance Committee Members, 1960-2008](#)

GRAPH: Official Development Assistance from Development Assistance Committee Members, 1960-2008

### [Plan B Budget: Additional Annual Funding Needed to Reach Basic Social Goals](#)

A full listing of data for the entire book is on-line at:

[http://www.earthpolicy.org/index.php?/books/pb4/pb4\\_data](http://www.earthpolicy.org/index.php?/books/pb4/pb4_data)

This is part of a supporting dataset for Lester R. Brown, **Plan B 4.0: Mobilizing to Save Civilization** (New York: W.W. Norton & Company, 2009). For more information and a free download of the book, see Earth Policy Institute on-line at [www.earthpolicy.org](http://www.earthpolicy.org).

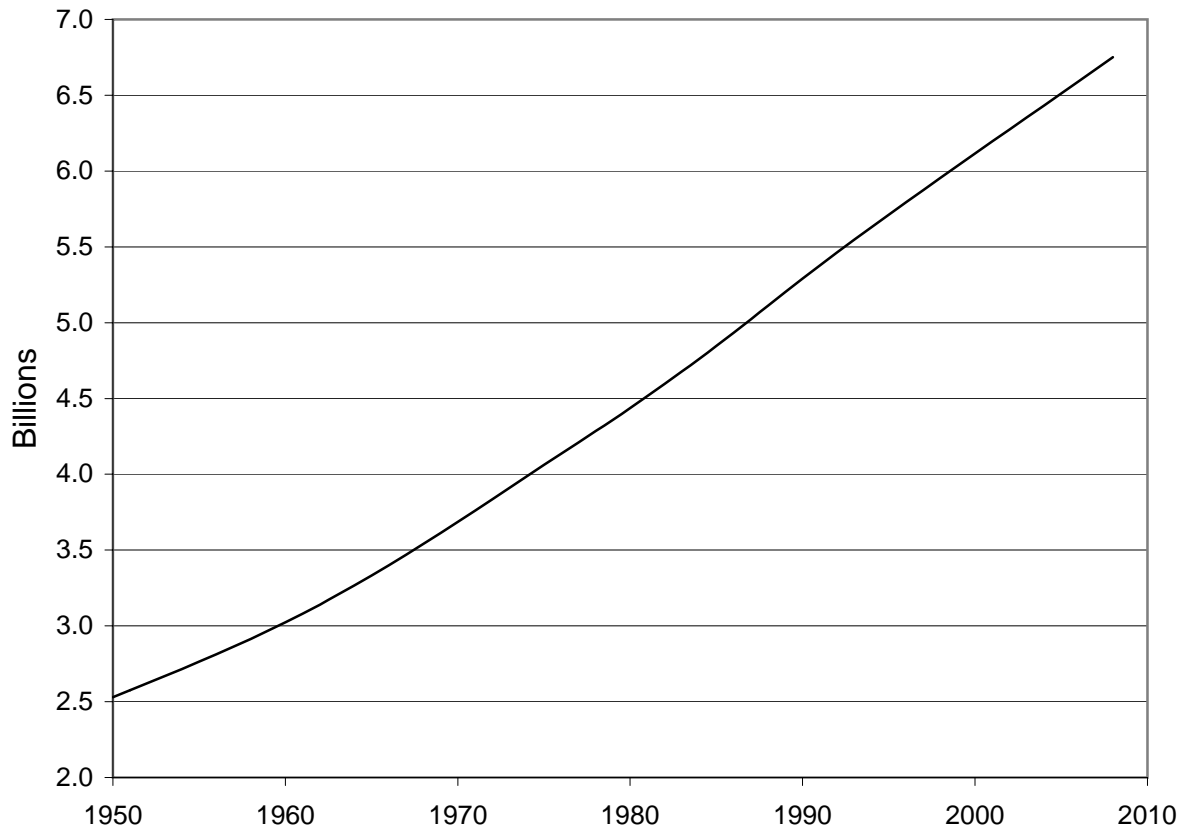
## World Population, 1950-2008

| Year | Population<br>Billions |
|------|------------------------|
| 1950 | 2.53                   |
| 1951 | 2.58                   |
| 1952 | 2.62                   |
| 1953 | 2.67                   |
| 1954 | 2.72                   |
| 1955 | 2.76                   |
| 1956 | 2.81                   |
| 1957 | 2.86                   |
| 1958 | 2.91                   |
| 1959 | 2.97                   |
| 1960 | 3.02                   |
| 1961 | 3.08                   |
| 1962 | 3.14                   |
| 1963 | 3.20                   |
| 1964 | 3.27                   |
| 1965 | 3.33                   |
| 1966 | 3.40                   |
| 1967 | 3.47                   |
| 1968 | 3.54                   |
| 1969 | 3.61                   |
| 1970 | 3.69                   |
| 1971 | 3.76                   |
| 1972 | 3.84                   |
| 1973 | 3.91                   |
| 1974 | 3.99                   |
| 1975 | 4.06                   |
| 1976 | 4.14                   |
| 1977 | 4.21                   |
| 1978 | 4.29                   |
| 1979 | 4.36                   |
| 1980 | 4.44                   |
| 1981 | 4.52                   |
| 1982 | 4.60                   |
| 1983 | 4.68                   |
| 1984 | 4.76                   |
| 1985 | 4.85                   |
| 1986 | 4.93                   |
| 1987 | 5.02                   |
| 1988 | 5.11                   |
| 1989 | 5.20                   |
| 1990 | 5.29                   |
| 1991 | 5.38                   |
| 1992 | 5.46                   |
| 1993 | 5.55                   |
| 1994 | 5.63                   |
| 1995 | 5.71                   |
| 1996 | 5.79                   |
| 1997 | 5.88                   |
| 1998 | 5.96                   |
| 1999 | 6.04                   |
| 2000 | 6.12                   |
| 2001 | 6.19                   |
| 2002 | 6.27                   |
| 2003 | 6.35                   |
| 2004 | 6.43                   |
| 2005 | 6.51                   |
| 2006 | 6.59                   |
| 2007 | 6.67                   |
| 2008 | 6.75                   |

Source: United Nations Population Division, *World Population Prospects: The 2008 Revision Population Database*, electronic database, at <http://esa.un.org/unpp>, updated 11 March 2009.

This is part of a supporting dataset for Lester R. Brown, **Plan B 4.0: Mobilizing to Save Civilization** (New York: W.W. Norton & Company, 2009). For more information and a free download of the book, see Earth Policy Institute on-line at [www.earthpolicy.org](http://www.earthpolicy.org).

# World Population, 1950-2008



Source: UNPop

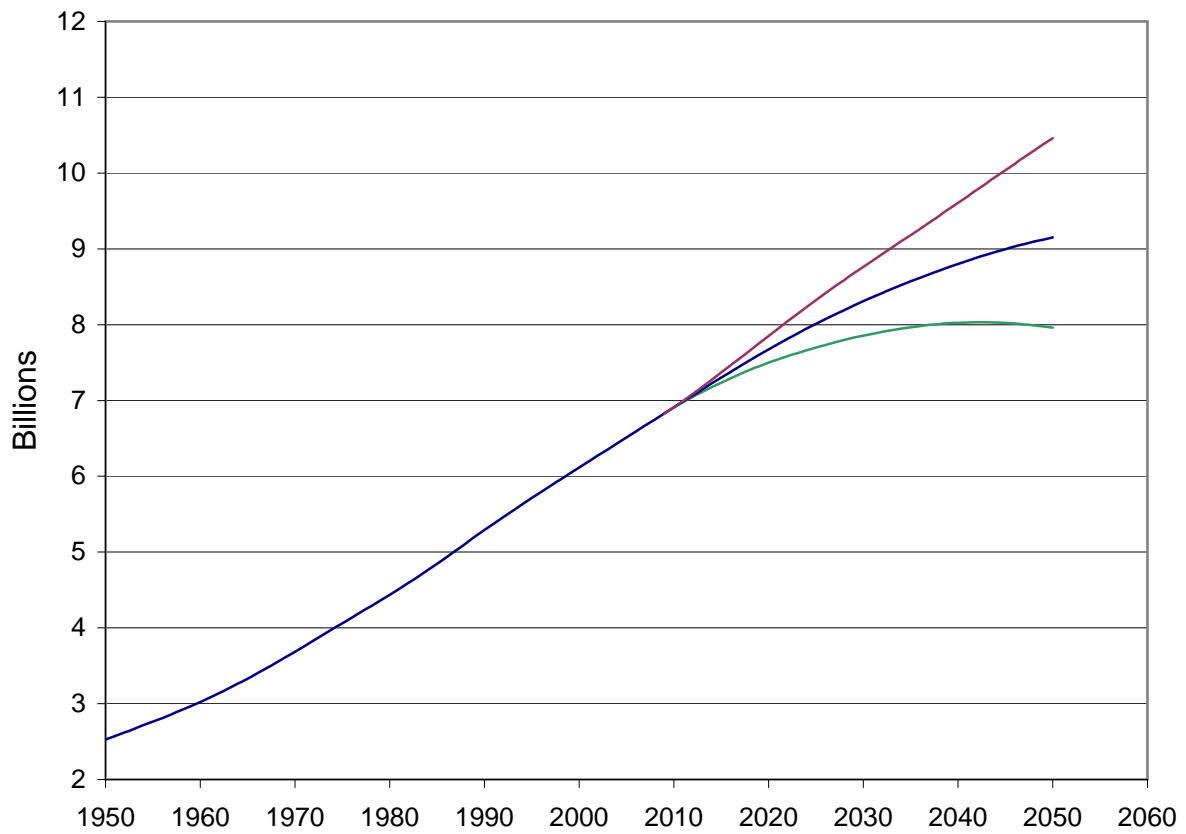
World Population, 1950-2008, with Projections to 2050

| Year | Population<br>Billions | Year | Population Projections |        |      |
|------|------------------------|------|------------------------|--------|------|
|      |                        |      | Low                    | Medium | High |
| 1950 | 2.5                    | 2009 | 6.8                    | 6.8    | 6.8  |
| 1951 | 2.6                    | 2010 | 6.9                    | 6.9    | 6.9  |
| 1952 | 2.6                    | 2011 | 7.0                    | 7.0    | 7.0  |
| 1953 | 2.7                    | 2012 | 7.0                    | 7.1    | 7.1  |
| 1954 | 2.7                    | 2013 | 7.1                    | 7.1    | 7.2  |
| 1955 | 2.8                    | 2014 | 7.2                    | 7.2    | 7.3  |
| 1956 | 2.8                    | 2015 | 7.2                    | 7.3    | 7.4  |
| 1957 | 2.9                    | 2016 | 7.3                    | 7.4    | 7.5  |
| 1958 | 2.9                    | 2017 | 7.3                    | 7.5    | 7.6  |
| 1959 | 3.0                    | 2018 | 7.4                    | 7.5    | 7.7  |
| 1960 | 3.0                    | 2019 | 7.5                    | 7.6    | 7.8  |
| 1961 | 3.1                    | 2020 | 7.5                    | 7.7    | 7.9  |
| 1962 | 3.1                    | 2021 | 7.5                    | 7.7    | 7.9  |
| 1963 | 3.2                    | 2022 | 7.6                    | 7.8    | 8.0  |
| 1964 | 3.3                    | 2023 | 7.6                    | 7.9    | 8.1  |
| 1965 | 3.3                    | 2024 | 7.7                    | 7.9    | 8.2  |
| 1966 | 3.4                    | 2025 | 7.7                    | 8.0    | 8.3  |
| 1967 | 3.5                    | 2026 | 7.7                    | 8.1    | 8.4  |
| 1968 | 3.5                    | 2027 | 7.8                    | 8.1    | 8.5  |
| 1969 | 3.6                    | 2028 | 7.8                    | 8.2    | 8.6  |
| 1970 | 3.7                    | 2029 | 7.8                    | 8.3    | 8.7  |
| 1971 | 3.8                    | 2030 | 7.9                    | 8.3    | 8.8  |
| 1972 | 3.8                    | 2031 | 7.9                    | 8.4    | 8.8  |
| 1973 | 3.9                    | 2032 | 7.9                    | 8.4    | 8.9  |
| 1974 | 4.0                    | 2033 | 7.9                    | 8.5    | 9.0  |
| 1975 | 4.1                    | 2034 | 7.9                    | 8.5    | 9.1  |
| 1976 | 4.1                    | 2035 | 8.0                    | 8.6    | 9.2  |
| 1977 | 4.2                    | 2036 | 8.0                    | 8.6    | 9.3  |
| 1978 | 4.3                    | 2037 | 8.0                    | 8.7    | 9.4  |
| 1979 | 4.4                    | 2038 | 8.0                    | 8.7    | 9.4  |
| 1980 | 4.4                    | 2039 | 8.0                    | 8.8    | 9.5  |
| 1981 | 4.5                    | 2040 | 8.0                    | 8.8    | 9.6  |
| 1982 | 4.6                    | 2041 | 8.0                    | 8.8    | 9.7  |
| 1983 | 4.7                    | 2042 | 8.0                    | 8.9    | 9.8  |
| 1984 | 4.8                    | 2043 | 8.0                    | 8.9    | 9.9  |
| 1985 | 4.8                    | 2044 | 8.0                    | 9.0    | 10.0 |
| 1986 | 4.9                    | 2045 | 8.0                    | 9.0    | 10.0 |
| 1987 | 5.0                    | 2046 | 8.0                    | 9.0    | 10.1 |
| 1988 | 5.1                    | 2047 | 8.0                    | 9.1    | 10.2 |
| 1989 | 5.2                    | 2048 | 8.0                    | 9.1    | 10.3 |
| 1990 | 5.3                    | 2049 | 8.0                    | 9.1    | 10.4 |
| 1991 | 5.4                    | 2050 | 8.0                    | 9.1    | 10.5 |
| 1992 | 5.5                    |      |                        |        |      |
| 1993 | 5.5                    |      |                        |        |      |
| 1994 | 5.6                    |      |                        |        |      |
| 1995 | 5.7                    |      |                        |        |      |
| 1996 | 5.8                    |      |                        |        |      |
| 1997 | 5.9                    |      |                        |        |      |
| 1998 | 6.0                    |      |                        |        |      |
| 1999 | 6.0                    |      |                        |        |      |
| 2000 | 6.1                    |      |                        |        |      |
| 2001 | 6.2                    |      |                        |        |      |
| 2002 | 6.3                    |      |                        |        |      |
| 2003 | 6.4                    |      |                        |        |      |
| 2004 | 6.4                    |      |                        |        |      |
| 2005 | 6.5                    |      |                        |        |      |
| 2006 | 6.6                    |      |                        |        |      |
| 2007 | 6.7                    |      |                        |        |      |
| 2008 | 6.8                    |      |                        |        |      |

Source: United Nations Population Division, *World Population Prospects: The 2008 Revision Population Database*, electronic database, at [esa.un.org/unpp](http://esa.un.org/unpp), updated 11 March 2009.

This is part of a supporting dataset for Lester R. Brown, **Plan B 4.0: Mobilizing to Save Civilization** (New York: W.W. Norton & Company, 2009). For more information and a free download of the book, see Earth Policy Institute on-line at [www.earthpolicy.org](http://www.earthpolicy.org).

World Population, 1950-2008, with Projections to 2050



Source: UNPop

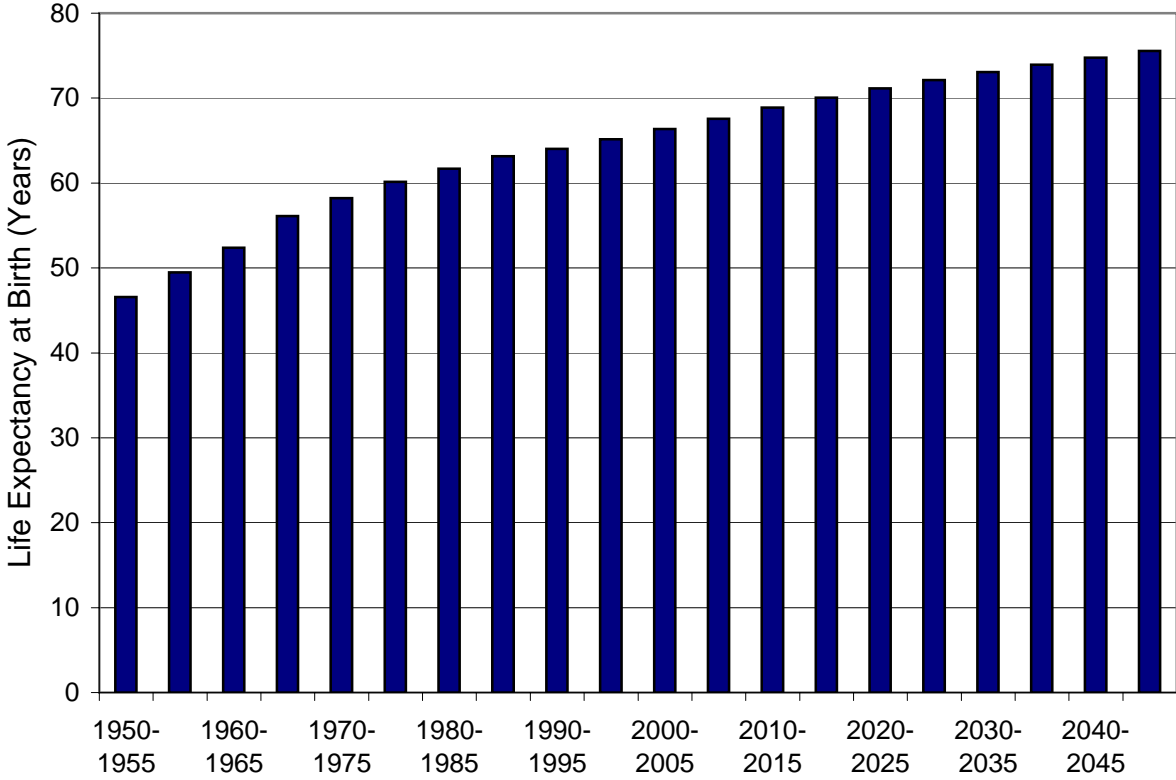
## Life Expectancy for the World and Selected Regions, 1950-2005, with Projection to 2050

| Period    | Africa | Sub-Saharan Africa | Asia | Europe | Latin America & the Caribbean | U.S. & Canada | Oceania | World |
|-----------|--------|--------------------|------|--------|-------------------------------|---------------|---------|-------|
|           | Years  |                    |      |        |                               |               |         |       |
| 1950-1955 | 39     | 38                 | 41   | 66     | 51                            | 69            | 60      | 47    |
| 1955-1960 | 41     | 40                 | 44   | 68     | 54                            | 70            | 62      | 49    |
| 1960-1965 | 43     | 42                 | 48   | 70     | 57                            | 70            | 64      | 52    |
| 1965-1970 | 44     | 43                 | 54   | 70     | 59                            | 70            | 65      | 56    |
| 1970-1975 | 46     | 45                 | 57   | 71     | 61                            | 72            | 66      | 58    |
| 1975-1980 | 49     | 47                 | 59   | 71     | 63                            | 73            | 68      | 60    |
| 1980-1985 | 50     | 48                 | 61   | 72     | 65                            | 74            | 70      | 62    |
| 1985-1990 | 51     | 49                 | 63   | 73     | 67                            | 75            | 71      | 63    |
| 1990-1995 | 52     | 49                 | 64   | 73     | 69                            | 76            | 72      | 64    |
| 1995-2000 | 52     | 49                 | 66   | 73     | 71                            | 78            | 73      | 65    |
| 2000-2005 | 53     | 50                 | 68   | 74     | 72                            | 78            | 75      | 66    |
| 2005-2010 | 54     | 51                 | 69   | 75     | 73                            | 79            | 76      | 68    |
| 2010-2015 | 56     | 53                 | 70   | 76     | 75                            | 80            | 77      | 69    |
| 2015-2020 | 58     | 55                 | 72   | 77     | 76                            | 81            | 78      | 70    |
| 2020-2025 | 59     | 57                 | 73   | 78     | 76                            | 81            | 79      | 71    |
| 2025-2030 | 61     | 59                 | 74   | 79     | 77                            | 82            | 80      | 72    |
| 2030-2035 | 63     | 61                 | 75   | 80     | 78                            | 82            | 80      | 73    |
| 2035-2040 | 64     | 63                 | 75   | 80     | 79                            | 83            | 81      | 74    |
| 2040-2045 | 66     | 64                 | 76   | 81     | 79                            | 83            | 82      | 75    |
| 2045-2050 | 67     | 66                 | 77   | 82     | 80                            | 83            | 82      | 76    |

Source: Compiled by Earth Policy Institute from U.N. Population Division, *World Population Prospects: The 2008 Revision, CD-ROM Edition* (Rome: May 2009).

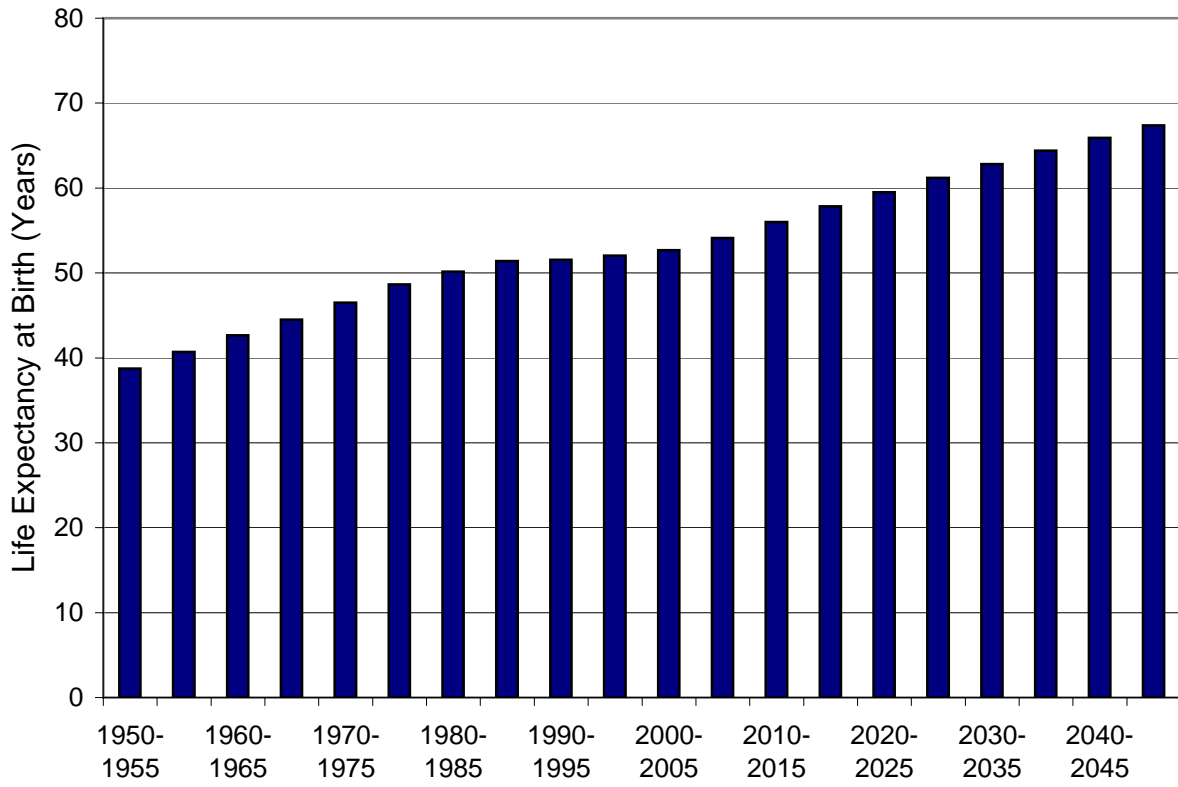
This is part of a supporting dataset for Lester R. Brown, **Plan B 4.0: Mobilizing to Save Civilization** (New York: W.W. Norton & Company, 2009). For more information and a free download of the book, see Earth Policy Institute on-line at [www.earthpolicy.org](http://www.earthpolicy.org).

Life Expectancy for the World, 1950-2005,  
with Projection to 2050



Source: UNPop

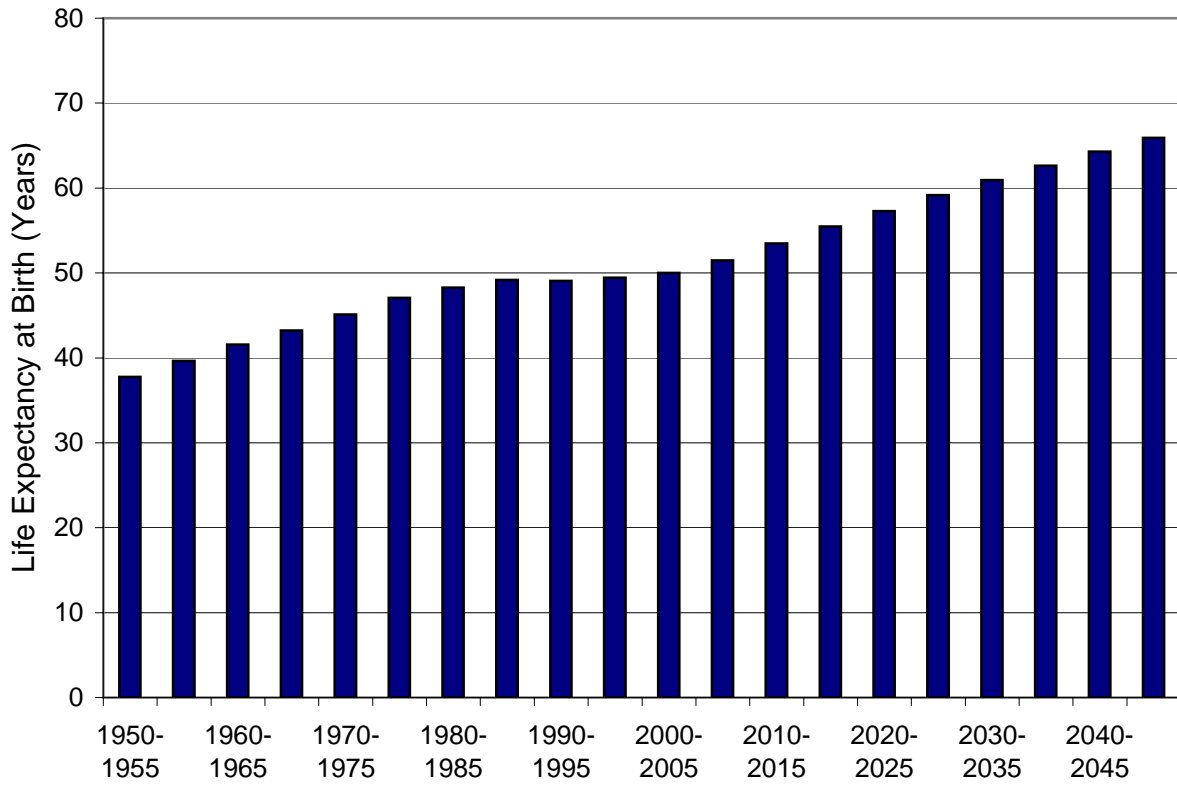
### Life Expectancy in Africa, 1950-2005, with Projection to 2050



Source: UNPop

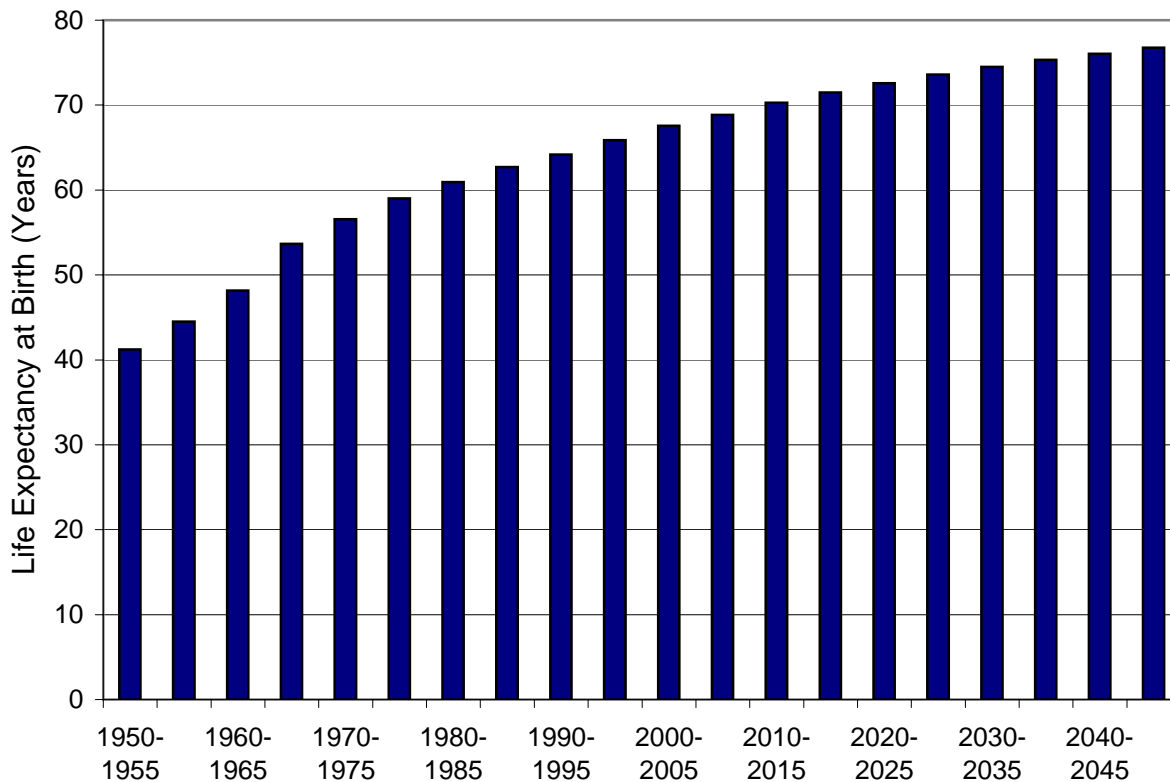


### Life Expectancy in Sub-Saharan Africa, 1950-2005, with Projection to 2050



Source: UNPop

### Life Expectancy in Asia, 1950-2005, with Projection to 2050



Source: UNPop

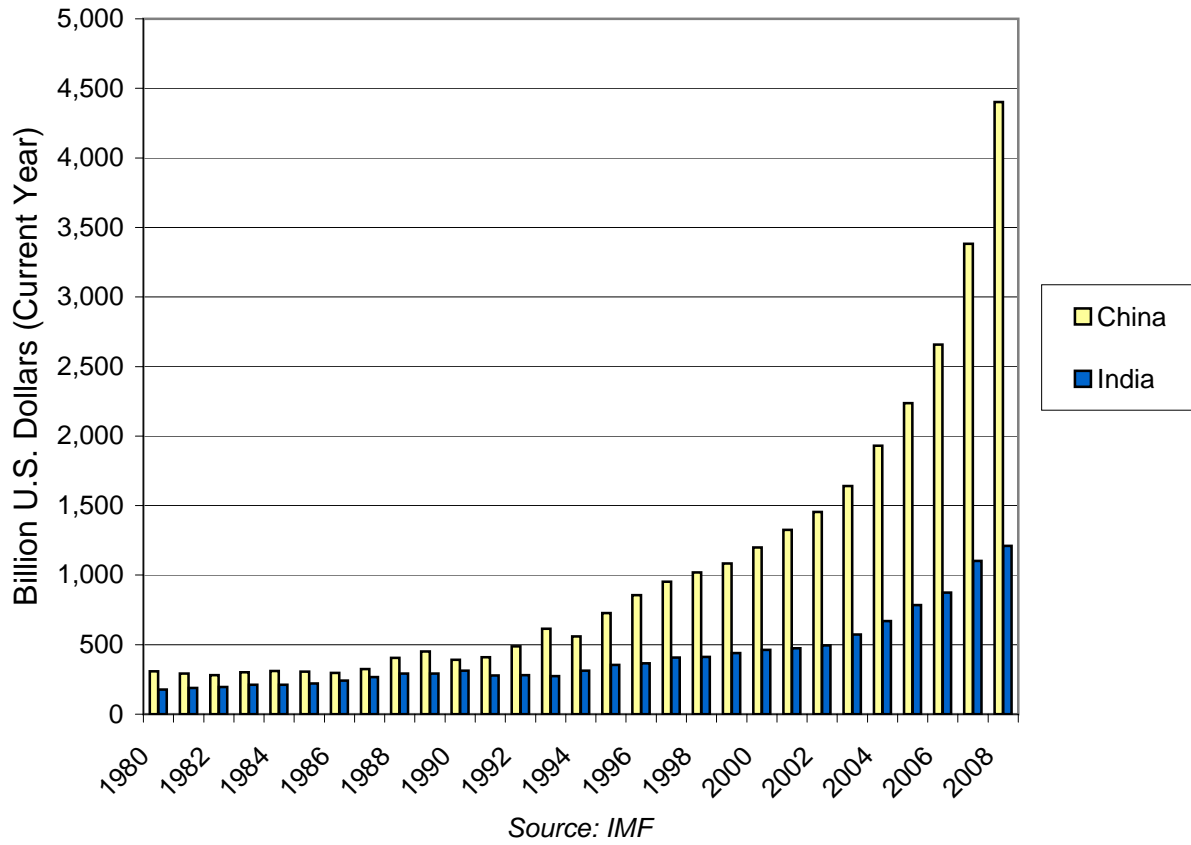
### Gross Domestic Product for China and India, 1980-2008

| Year | China                               | India |
|------|-------------------------------------|-------|
|      | Billion U.S. Dollars (Current Year) |       |
| 1980 | 309                                 | 177   |
| 1981 | 293                                 | 189   |
| 1982 | 281                                 | 195   |
| 1983 | 302                                 | 211   |
| 1984 | 311                                 | 212   |
| 1985 | 307                                 | 220   |
| 1986 | 298                                 | 242   |
| 1987 | 324                                 | 267   |
| 1988 | 404                                 | 293   |
| 1989 | 451                                 | 292   |
| 1990 | 390                                 | 314   |
| 1991 | 409                                 | 279   |
| 1992 | 488                                 | 281   |
| 1993 | 613                                 | 275   |
| 1994 | 559                                 | 312   |
| 1995 | 728                                 | 354   |
| 1996 | 856                                 | 365   |
| 1997 | 953                                 | 408   |
| 1998 | 1,019                               | 412   |
| 1999 | 1,083                               | 439   |
| 2000 | 1,198                               | 462   |
| 2001 | 1,325                               | 473   |
| 2002 | 1,454                               | 495   |
| 2003 | 1,641                               | 573   |
| 2004 | 1,932                               | 669   |
| 2005 | 2,236                               | 784   |
| 2006 | 2,658                               | 875   |
| 2007 | 3,382                               | 1,102 |
| 2008 | 4,402                               | 1,210 |

Source: International Monetary Fund (IMF), *World Economic Outlook 2009*, electronic database, at <http://www.imf.org/external/pubs/ft/weo/2009/01/weodata/index.aspx>, updated April 2009.

This is part of a supporting dataset for Lester R. Brown, **Plan B 4.0: Mobilizing to Save Civilization** (New York: W.W. Norton & Company, 2009). For more information and a free download of the book, see Earth Policy Institute on-line at [www.earthpolicy.org](http://www.earthpolicy.org).

## Gross Domestic Product for China and India, 1980-2008



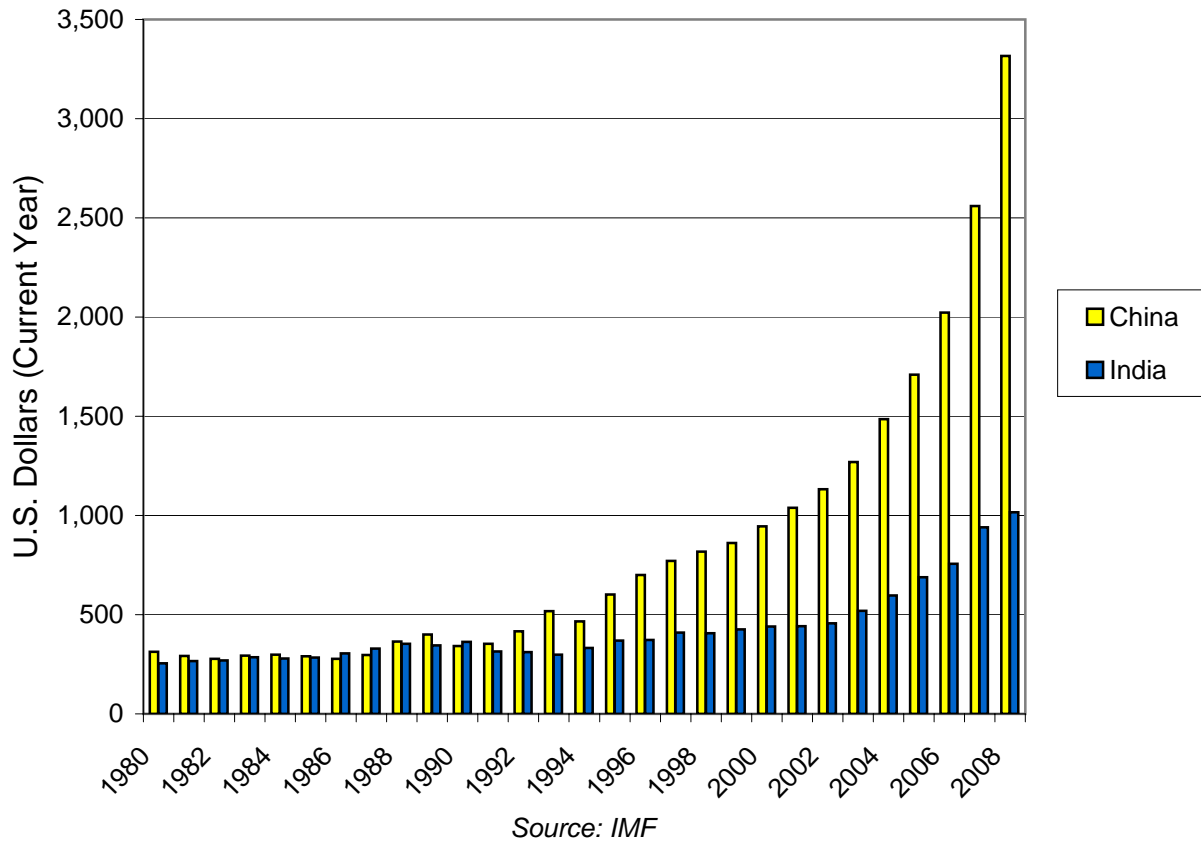
### Per Capita Gross Domestic Product for China and India, 1980-2008

| Year | China                       | India |
|------|-----------------------------|-------|
|      | U.S. Dollars (Current Year) |       |
| 1980 | 313                         | 255   |
| 1981 | 292                         | 267   |
| 1982 | 277                         | 270   |
| 1983 | 293                         | 285   |
| 1984 | 298                         | 280   |
| 1985 | 290                         | 284   |
| 1986 | 277                         | 305   |
| 1987 | 296                         | 330   |
| 1988 | 364                         | 354   |
| 1989 | 400                         | 345   |
| 1990 | 341                         | 363   |
| 1991 | 353                         | 315   |
| 1992 | 417                         | 311   |
| 1993 | 517                         | 298   |
| 1994 | 467                         | 332   |
| 1995 | 601                         | 369   |
| 1996 | 699                         | 373   |
| 1997 | 771                         | 410   |
| 1998 | 817                         | 406   |
| 1999 | 861                         | 426   |
| 2000 | 946                         | 440   |
| 2001 | 1,038                       | 443   |
| 2002 | 1,132                       | 456   |
| 2003 | 1,270                       | 519   |
| 2004 | 1,486                       | 597   |
| 2005 | 1,710                       | 689   |
| 2006 | 2,022                       | 757   |
| 2007 | 2,560                       | 940   |
| 2008 | 3,315                       | 1,016 |

Source: International Monetary Fund (IMF), World Economic Outlook 2009, electronic database, at <http://www.imf.org/external/pubs/ft/weo/2009/01/weodata/index.aspx>, updated April 2009.

This is part of a supporting dataset for Lester R. Brown, **Plan B 4.0: Mobilizing to Save Civilization** (New York: W.W. Norton & Company, 2009). For more information and a free download of the book, see Earth Policy Institute on-line at [www.earthpolicy.org](http://www.earthpolicy.org).

## Per Capita Gross Domestic Product for China and India, 1980-2008



## Global Wild Poliovirus Cases, 1985-2008

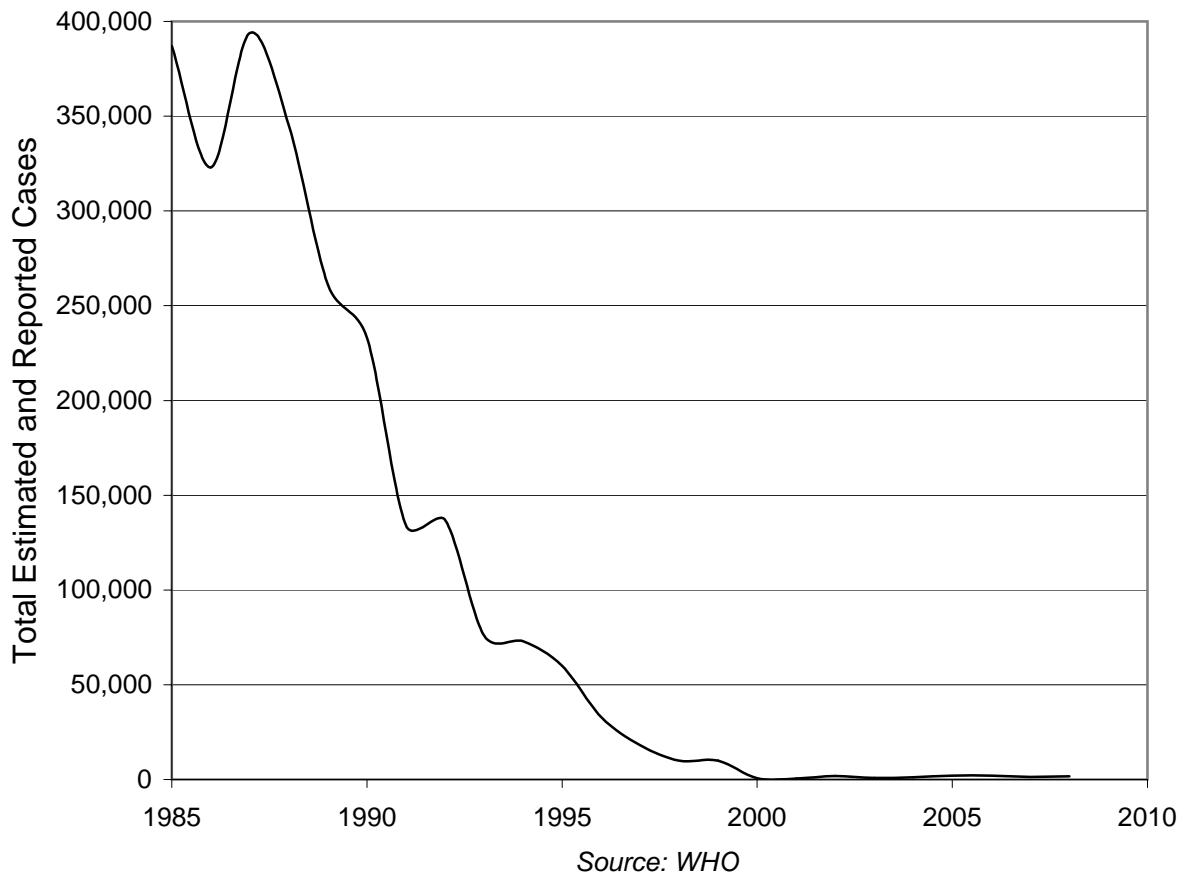
| Year | Estimated and Reported Cases* |
|------|-------------------------------|
| 1985 | 387,000                       |
| 1986 | 323,000                       |
| 1987 | 394,000                       |
| 1988 | 345,000                       |
| 1989 | 261,000                       |
| 1990 | 233,000                       |
| 1991 | 134,000                       |
| 1992 | 137,000                       |
| 1993 | 76,000                        |
| 1994 | 73,000                        |
| 1995 | 60,000                        |
| 1996 | 33,000                        |
| 1997 | 18,000                        |
| 1998 | 10,000                        |
| 1999 | 10,000                        |
| 2000 | 719                           |
| 2001 | 483                           |
| 2002 | 1,918                         |
| 2003 | 784                           |
| 2004 | 1,255                         |
| 2005 | 1,979                         |
| 2006 | 1,997                         |
| 2007 | 1,315                         |
| 2008 | 1,651                         |

\*Note: Cases prior to 2000 are largely comprised of estimates because disease surveillance was not sufficiently sensitive to provide a precise number of cases.

Source: 1985-1999 from Oliver Rosenbauer, World Health Organization (WHO), "Progress in Polio Eradication, Estimated and Reported Polio Cases, 1985-2006," September 2007; 2000-2009 from "Wild Poliovirus 2000-2009," in WHO Global Polio Eradication Initiative, "Wild Poliovirus Weekly Update," at [www.polioeradication.org](http://www.polioeradication.org), updated 6 August 2009.

This is part of a supporting dataset for Lester R. Brown, **Plan B 4.0: Mobilizing to Save Civilization** (New York: W.W. Norton & Company, 2009). For more information and a free download of the book, see Earth Policy Institute on-line at [www.earthpolicy.org](http://www.earthpolicy.org).

Global Wild Poliovirus Cases, 1985-2008





## Leading Causes of Death in the World, 2004

| Cause  | World | High-income | Low- and middle- |
|--|-------|-------------|------------------|
|  |       | countries   | income countries |
| Million Deaths                                       |       |             |                  |
| Cardiovascular diseases                              | 17.1  | 3.0         | 14.0             |
| Infectious and parasitic diseases, <i>including:</i> | 9.5   | 0.2         | 9.3              |
| <i>Diarrhoeal diseases</i>                           | 2.2   | 0.0         | 2.1              |
| <i>HIV/AIDS</i>                                      | 2.0   | 0.0         | 2.0              |
| <i>Tuberculosis</i>                                  | 1.5   | 0.0         | 1.4              |
| <i>Malaria</i>                                       | 0.9   | 0.0         | 0.9              |
| Cancers, <i>including:</i>                           | 7.6   | 2.2         | 5.4              |
| <i>Trachea/bronchus/lung</i>                         | 1.3   | 0.5         | 0.8              |
| Respiratory infections                               | 4.3   | 0.3         | 3.9              |
| Respiratory diseases                                 | 4.0   | 0.5         | 3.6              |
| Unintentional injuries                               | 3.9   | 0.3         | 3.6              |
| Perinatal conditions                                 | 3.2   | 0.0         | 3.1              |
| Digestive diseases                                   | 2.0   | 0.3         | 1.7              |
| Intentional injuries                                 | 1.6   | 0.2         | 1.5              |
| Neuropsychiatric conditions                          | 1.3   | 0.5         | 0.8              |
| Diabetes mellitus                                    | 1.1   | 0.2         | 0.9              |
| Diseases of the genitourinary system                 | 0.9   | 0.2         | 0.8              |
| Maternal conditions                                  | 0.5   | 0.0         | 0.5              |
| Nutritional deficiencies                             | 0.5   | 0.0         | 0.5              |
| All Causes   | 58.8  | 8.1         | 50.6             |

Note: Sums do not always add to totals because WHO excludes some "residual populations" outside WHO member states from its income categories and because minor causes of death are omitted from list.

Source: Compiled by Earth Policy Institute from "Mortality and Morbidity: Deaths - LMIC Countries by WHO Region," table for *The Global Burden of Disease: 2004 Update* (World Health Organization (WHO), 2008), at [www.who.int/healthinfo/global\\_burden\\_disease/estimates\\_regional/en/index.html](http://www.who.int/healthinfo/global_burden_disease/estimates_regional/en/index.html).

This is part of a supporting dataset for Lester R. Brown, **Plan B 4.0: Mobilizing to Save Civilization** (New York: W.W. Norton & Company, 2009). For more information and a free download of the book, see Earth Policy Institute on-line at [www.earthpolicy.org](http://www.earthpolicy.org)

**Official Development Assistance from Development Assistance Committee Members, 1960-2008**

| Year                                | Total Net ODA | Total ODA Grants | Debt Forgiveness Grants |
|-------------------------------------|---------------|------------------|-------------------------|
| Billion U.S. Dollars (Current Year) |               |                  |                         |
| 1960                                | 4.7           | 3.7              | 0.0                     |
| 1961                                | 5.2           | 4.0              | 0.0                     |
| 1962                                | 5.6           | 4.0              | 0.0                     |
| 1963                                | 5.8           | 3.9              | 0.0                     |
| 1964                                | 5.9           | 3.8              | 0.0                     |
| 1965                                | 6.5           | 3.7              | 0.0                     |
| 1966                                | 6.5           | 3.7              | 0.0                     |
| 1967                                | 6.4           | 3.6              | 0.0                     |
| 1968                                | 6.9           | 3.3              | 0.0                     |
| 1969                                | 6.9           | 3.2              | 0.0                     |
| 1970                                | 6.7           | 3.3              | 0.0                     |
| 1971                                | 7.3           | 3.6              | 0.0                     |
| 1972                                | 8.8           | 4.4              | 0.3                     |
| 1973                                | 8.7           | 4.5              | 0.0                     |
| 1974                                | 11.2          | 5.3              | 0.0                     |
| 1975                                | 13.3          | 6.3              | 0.0                     |
| 1976                                | 13.2          | 6.6              | 0.1                     |
| 1977                                | 15.0          | 7.2              | 0.2                     |
| 1978                                | 19.1          | 9.4              | 0.7                     |
| 1979                                | 21.8          | 11.7             | 0.5                     |
| 1980                                | 26.2          | 13.0             | 1.2                     |
| 1981                                | 24.6          | 12.2             | 0.2                     |
| 1982                                | 27.0          | 12.5             | 0.1                     |
| 1983                                | 26.8          | 13.3             | 0.1                     |
| 1984                                | 28.1          | 14.8             | 0.1                     |
| 1985                                | 28.8          | 17.0             | 0.3                     |
| 1986                                | 35.8          | 20.0             | 0.3                     |
| 1987                                | 40.6          | 22.2             | 0.2                     |
| 1988                                | 47.1          | 24.7             | 0.3                     |
| 1989                                | 45.7          | 25.8             | 0.6                     |
| 1990                                | 54.3          | 32.3             | 4.3                     |
| 1991                                | 58.3          | 36.5             | 6.0                     |
| 1992                                | 62.4          | 34.8             | 3.0                     |
| 1993                                | 56.1          | 33.5             | 2.7                     |
| 1994                                | 58.8          | 35.2             | 3.5                     |
| 1995                                | 58.8          | 36.2             | 3.8                     |
| 1996                                | 55.6          | 36.6             | 3.5                     |
| 1997                                | 48.5          | 31.3             | 3.2                     |
| 1998                                | 52.1          | 32.5             | 3.3                     |
| 1999                                | 53.2          | 33.9             | 2.5                     |
| 2000                                | 53.7          | 33.0             | 2.2                     |
| 2001                                | 52.4          | 33.5             | 2.6                     |
| 2002                                | 58.3          | 39.8             | 5.4                     |
| 2003                                | 69.1          | 50.9             | 8.5                     |
| 2004                                | 79.4          | 57.2             | 7.3                     |
| 2005                                | 107.1         | 83.4             | 25.2                    |
| 2006                                | 104.4         | 79.4             | 19.9                    |
| 2007                                | 103.5         | 75.3             | 9.9                     |
| 2008                                | 119.8         | 86.4             | 11.3                    |

Notes:

1) Total Net ODA refers to total grants (transfers of cash, goods, and services not requiring repayment) and loans/credits provided to recipient countries, minus repayments to donor countries of principal on loans.

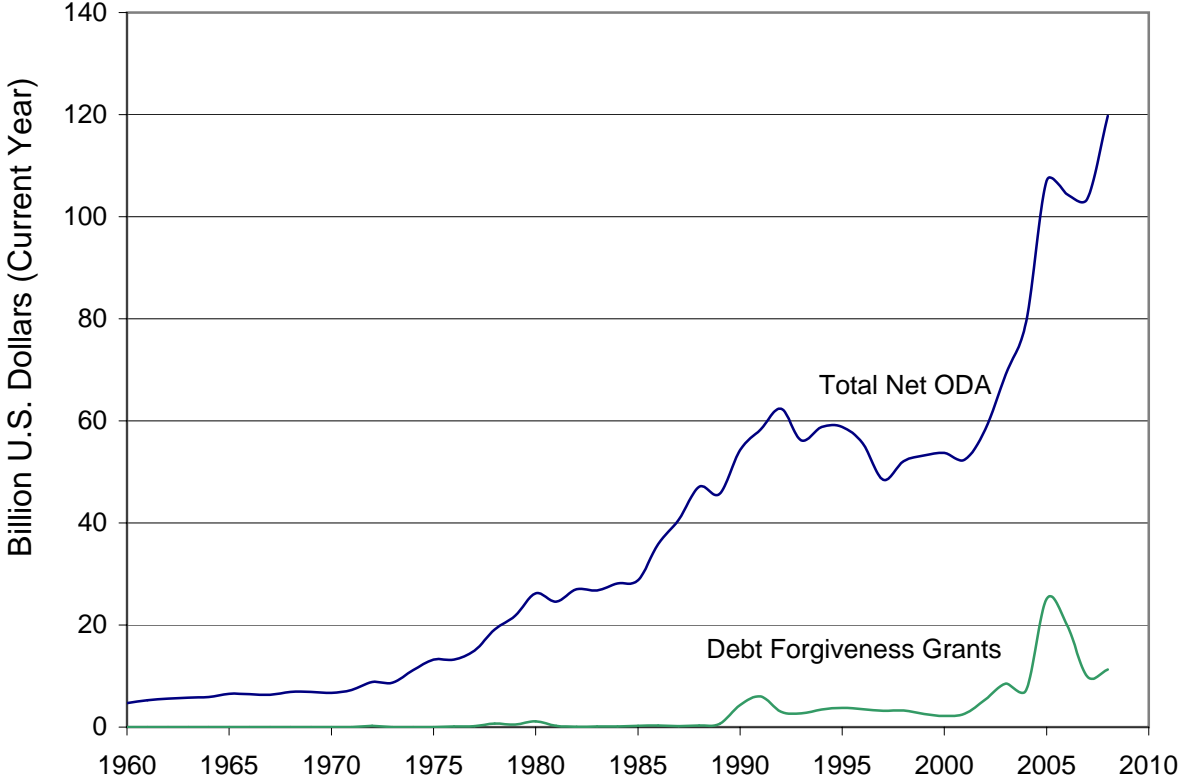
2) The Development Assistance Committee (DAC) is a group of twenty-three major bilateral donors: the EU-15, plus Australia, Canada, Japan, New Zealand, Norway, Switzerland, the United States, and the European Commission.

3) Total Net ODA from DAC countries is equal to 98.7% of total Net ODA distributed to recipient countries. Total ODA Grants from DAC countries is equal to 99.4% of total ODA Grants distributed to recipient countries. Debt Forgiveness Grants from DAC countries are equal to 99.9% of all Debt Forgiveness distributed to recipient countries.

Source: Organisation for Economic Cooperation and Development, *OECD Statistics*, electronic database, at <http://stats.oecd.org/wbos/default.aspx>, updated 30 March 2009; OECD, "DAC's Glossary," at [www.oecd.org/glossary/0,3414,en\\_2649\\_3372](http://www.oecd.org/glossary/0,3414,en_2649_3372)

This is part of a supporting dataset for Lester R. Brown, **Plan B 4.0: Mobilizing to Save Civilization** (New York: W.W. Norton & Company, 2009). For more information and a free download of the book, see Earth Policy Institute on-line at [www.earthpolicy.org](http://www.earthpolicy.org).

# Official Development Assistance from Development Assistance Committee Members, 1960-2008



Source: OECD

## Plan B Budget: Additional Annual Funding Needed to Reach Basic Social Goals

| Goal  | Funding              |
|---|----------------------|
|   | Billion U.S. Dollars |
| Universal primary education   | 10                   |
| Eradication of adult illiteracy   | 4                    |
| School lunch programs for 44 poorest countries                              | 6                    |
| Assistance to preschool children and pregnant women in 44 poorest countries | 4                    |
| Reproductive health and family planning                                     | 17                   |
| Universal basic health care   | 33                   |
| Closing the condom gap  | 3                    |
| <b>Total</b>  | <b>77</b>            |

Source: Costs of meeting social goals in Table 7–1 compiled by Earth Policy Institute, based on the following sources: universal primary education from U.K. Treasury, *From Commitment to Action: Education* (London: Department for International Development, September 2005); adult literacy campaign is author's estimate; school lunch program from George McGovern, "Yes We CAN Feed the World's Hungry," *Parade*, 16 December 2001; assistance to preschool children and pregnant women is author's estimate of extending the U.S.'s Women, Infants, and Children program, based on *ibid.*; reproductive health and family planning from J. Joseph Speidel et al., *Family Planning and Reproductive Health: The Link to Environmental Preservation* (San Francisco: Bixby Center for Reproductive Health and Research Policy, University of California, 2007), p. 10, and from J. Joseph Speidel, discussion with J. Matthew Roney, Earth Policy Institute, 16 October 2007; universal basic health care from Jeffrey D. Sachs and the Commission on Macroeconomics and Health, *Macroeconomics and Health: Investing in Health for Economic Development* (Geneva: World Health Organization (WHO), 2001); closing the condom gap estimated from United Nations Population Fund (UNFPA), *Donor Support for Contraceptives and Condoms for STI/HIV Prevention 2007* (New York: 2008) and from Population Action International, "Why Condoms Count in the Era of HIV/AIDS," fact sheet (Washington, DC: 2008).

This is part of a supporting dataset for Lester R. Brown, **Plan B 4.0: Mobilizing to Save Civilization** (New York: W.W. Norton & Company, 2009). For more information and a free download of the book, see Earth Policy Institute on-line at [www.earthpolicy.org](http://www.earthpolicy.org)