

The Great Transition: Shifting from Fossil Fuels to Solar and Wind Energy Supporting Data - Coal

[Proved Coal Reserves, 2013](#)

GRAPH: Proved Coal Reserves in Top Countries, 2013

[Coal Production in Top Ten Countries and the World, 1981-2013](#)

GRAPH: Coal Production in Top Countries, 1981-2013

[Coal Production in China, 1981-2014](#)

GRAPH: Coal Production in China, 1981-2014

[Coal Consumption in Top Ten Countries and the World, 1965-latest year](#)

GRAPH: Coal Consumption in Top Countries, 1965-2014

GRAPH: Coal Consumption in Japan, 1965-2013

GRAPH: Coal Consumption in Russia, 1985-2013

GRAPH: Coal Consumption in Germany, 1965-2013

[Coal Consumption in China, 1965-2014](#)

GRAPH: Coal Consumption in China, 1965-2014

[Coal Consumption in China and the Rest of the World, 1965-2013](#)

GRAPH: Coal Consumption in China and the Rest of the World, 1965-2013

[Coal Consumption in India, 1965-2013](#)

GRAPH: Coal Consumption in India, 1965-2013

[Coal Consumption in the United States, 1950-2014](#)

GRAPH: Coal Consumption in United States, 1950-2014

[Coal Consumption in the European Union, 1965-2013](#)

GRAPH: Coal Consumption in the European Union, 1965-2013

[Coal Imports in Top Ten Countries and the World, 1980-2012](#)

GRAPH: World Coal Imports, 1980-2012

GRAPH: Coal Imports in Selected Countries, 1980-2012

[Coal Imports in China, 1980-2014](#)

GRAPH: Coal Imports in China, 1980-2014

[Coal Imports in India, 1980-2012](#)

GRAPH: Coal Imports in India, 1980-2012

[Coal Imports and Exports in the United States, 1980-2014](#)

GRAPH: Coal Imports in the United States, 1980-2014

GRAPH: Coal Exports from the United States, 1980-2014

[Global Coal Exports, 1980-2012](#)

GRAPH: Global Coal Exports, 1980-2012

A full listing of data for the entire book is on-line at:

http://www.earth-policy.org/books/tgt/tgt_data

This is part of a supporting dataset for **The Great Transition: Shifting from Fossil Fuels to Solar and Wind Energy**, by Lester R. Brown, with Janet Larsen, J. Matthew Roney, and Emily E. Adams (New York: W.W. Norton & Company, 2015).

For more information, see Earth Policy Institute on-line at www.earth-policy.org.

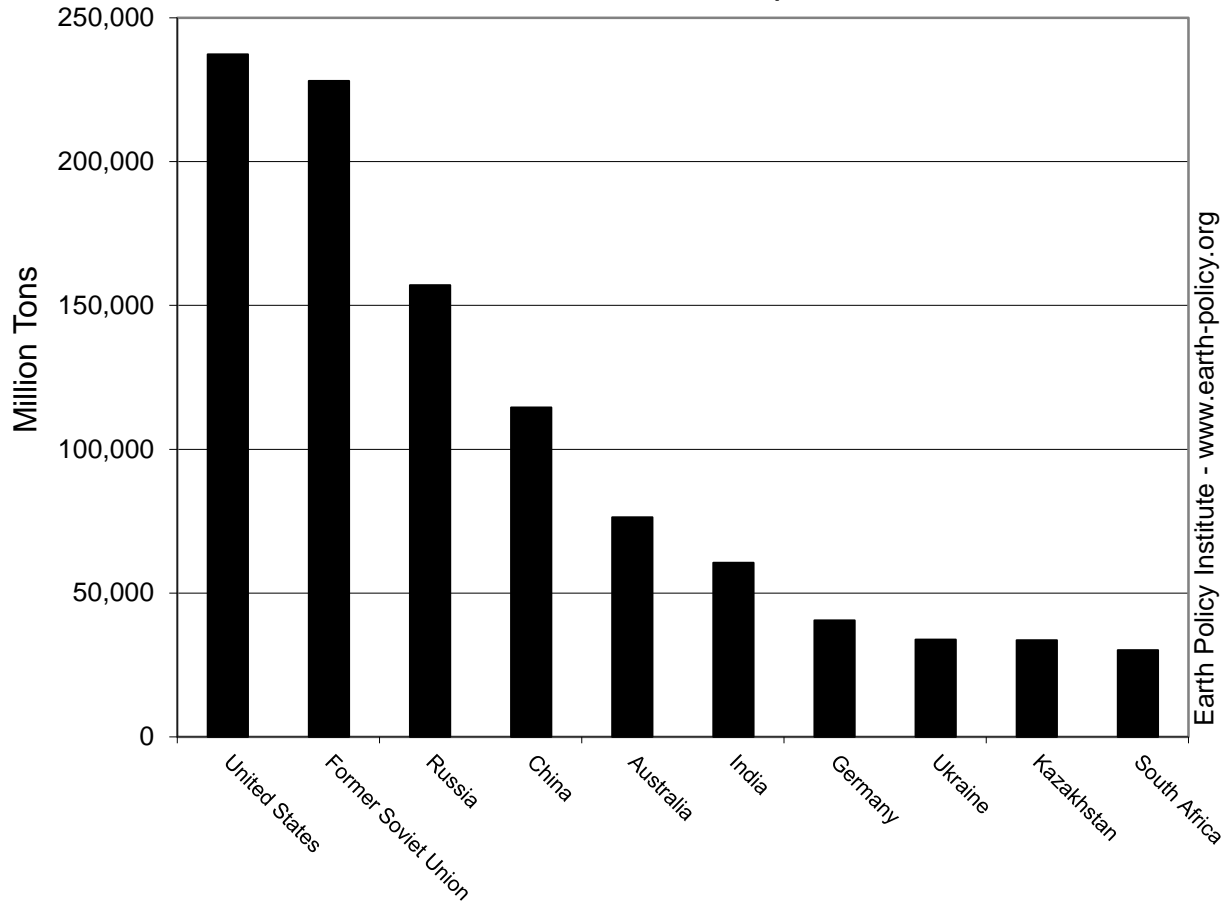
Proved Coal Reserves, 2013

Country	Total Million Tons	Reserves to Production Ratio Ratio
United States	237,295	266
Former Soviet Union	228,034	396
Russia	157,010	452
China	114,500	31
Australia	76,400	160
India	60,600	100
Germany	40,548	213
Ukraine	33,873	384
Kazakhstan	33,600	293
South Africa	30,156	117
Indonesia	28,017	67
Turkey	8,702	141
Colombia	6,746	79
Brazil	6,630	*
Canada	6,582	95
Poland	5,465	38
Greece	3,020	56
Bulgaria	2,366	83
Pakistan	2,070	*
Hungary	1,660	174
Thailand	1,239	69
Mexico	1,211	73
Middle East	1,122	*
Czech Republic	1,052	21
North Korea	600	15
New Zealand	571	126
Spain	530	120
Zimbabwe	502	315
Venezuela	479	206
Japan	347	288
Romania	291	12
United Kingdom	228	18
Vietnam	150	4
South Korea	126	69
World Total	891,531	113

Notes via BP *Statistical Review of World Energy 2014*: Proved reserves of coal are generally taken to be those quantities that geological and engineering information indicates with reasonable certainty can be recovered in the future from known deposits under existing economic and operating conditions. The reserves-to-production (R/P) ratio is defined as the reserves remaining at the end of the year divided by the production in that year; the result is the length of time that those remaining reserves would last if production were to continue at that rate. * means that the R/P ratio is more than 500 years.

Source: Compiled by Earth Policy Institute from BP, *Statistical Review of World Energy June 2014* (London: 2014).

Proved Coal Reserves in Top Countries, 2013



Source: BP

Earth Policy Institute - www.earth-policy.org

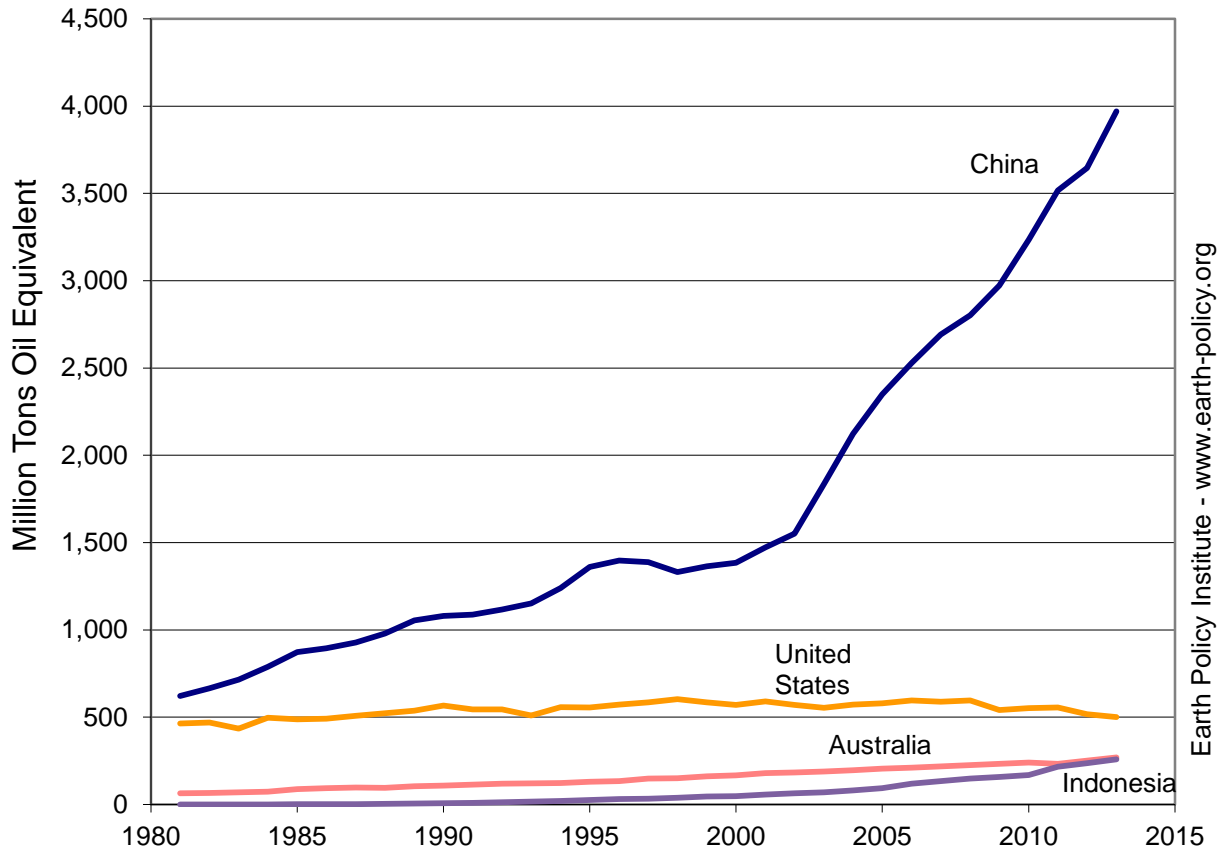
Coal Production in Top Ten Countries and the World, 1981-2013

Year	China	United States	Australia	Indonesia	India	Russia	Kazakhstan	Poland	Colombia	Ukraine	World Total
Million Tons Oil Equivalent											
1981	622	463	65	0	63	n.a.	n.a.	98	3	n/a	1,853
1982	666	470	67	0	62	n.a.	n.a.	113	3	n/a	1,914
1983	715	435	70	0	66	n.a.	n.a.	115	3	n/a	1,901
1984	789	497	73	1	69	n.a.	n.a.	117	4	n/a	1,989
1985	872	487	88	1	71	176	68	118	6	97	2,092
1986	894	492	93	2	77	183	72	119	7	100	2,142
1987	928	508	98	2	84	184	74	121	9	98	2,183
1988	980	523	96	3	90	189	74	121	10	98	2,236
1989	1,054	538	105	5	97	183	71	111	13	92	2,275
1990	1,080	566	109	7	92	176	68	94	13	84	2,250
1991	1,087	544	113	9	99	155	67	91	14	69	2,184
1992	1,116	545	120	14	104	148	65	89	15	68	2,178
1993	1,151	510	121	17	108	135	57	89	14	59	2,117
1994	1,240	557	123	20	110	121	53	89	15	49	2,173
1995	1,361	555	129	26	118	118	43	91	17	43	2,240
1996	1,397	572	134	31	127	114	39	94	20	36	2,278
1997	1,388	585	148	34	126	109	37	92	21	40	2,305
1998	1,332	603	150	38	126	104	36	80	22	40	2,269
1999	1,364	584	161	45	124	112	30	77	21	42	2,266
2000	1,384	570	167	47	132	116	38	71	25	42	2,287
2001	1,472	590	180	57	134	123	41	72	29	43	2,388
2002	1,550	570	184	64	138	117	38	71	26	43	2,400
2003	1,835	554	189	70	144	127	43	71	33	42	2,572
2004	2,123	572	197	81	156	132	44	70	35	42	2,782
2005	2,350	580	206	94	162	139	44	69	38	41	2,943
2006	2,529	595	211	119	170	145	49	67	43	42	3,102
2007	2,692	588	217	133	181	148	50	62	45	40	3,212
2008	2,802	597	225	148	196	153	57	60	48	41	3,326
2009	2,973	541	233	158	211	142	51	56	47	38	3,356
2010	3,235	551	240	169	218	151	54	55	48	40	3,548
2011	3,516	556	233	217	216	158	56	57	56	44	3,768
2012	3,645	518	251	237	229	169	59	59	58	46	3,862
2013	3,970	501	269	259	229	165	58	58	56	46	3,881

Note: "n.a." indicates data not available.

Source: Compiled by Earth Policy Institute from BP, *Statistical Review of World Energy June 2014* (London: 2014); with 2000-2012 China data from National Bureau of Statistics China (NBS), *National Data*, electronic database, at data.stats.gov.cn/english/easyquery.htm?cn=C01, viewed 25 March 2015; 2013 China data from NBS, "Statistical Communiqué of the People's Republic of China on the 2014 National Economic and Social Development," press release, (Beijing: 26 February 2015).

Coal Production in Top Countries, 1981-2013



Source: BP, NBS

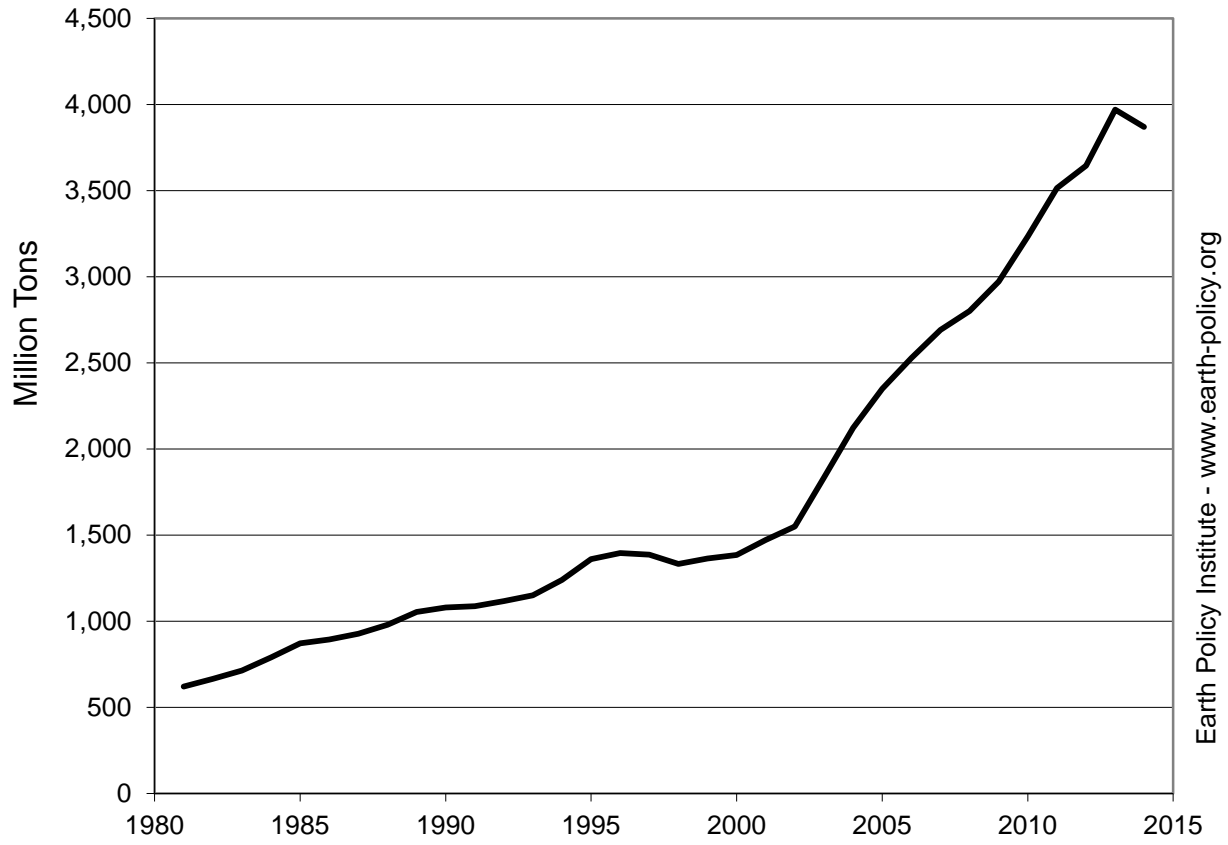
Earth Policy Institute - www.earth-policy.org

Coal Production in China, 1981-2014

Year	Production Million Tons
1981	622
1982	666
1983	715
1984	789
1985	872
1986	894
1987	928
1988	980
1989	1,054
1990	1,080
1991	1,087
1992	1,116
1993	1,151
1994	1,240
1995	1,361
1996	1,397
1997	1,388
1998	1,332
1999	1,364
2000	1,384
2001	1,472
2002	1,550
2003	1,835
2004	2,123
2005	2,350
2006	2,529
2007	2,692
2008	2,802
2009	2,973
2010	3,235
2011	3,516
2012	3,645
2013	3,970
2014	3,870

Source: Compiled by Earth Policy Institute with 1981-1999 from BP, *Statistical Review of World Energy June 2014* (London: 2014); 2000-2012 from National Bureau of Statistics China, *National Data*, electronic database, at data.stats.gov.cn/english/easyquery.htm?cn=C01, viewed 25 March 2015; 2013-2014 from National Bureau of Statistics China, "Statistical Communiqué of the People's Republic of China on the 2014 National Economic and Social Development," press release, (Beijing: 26 February 2015).

Coal Production in China, 1981-2014



Source: BP, NBS

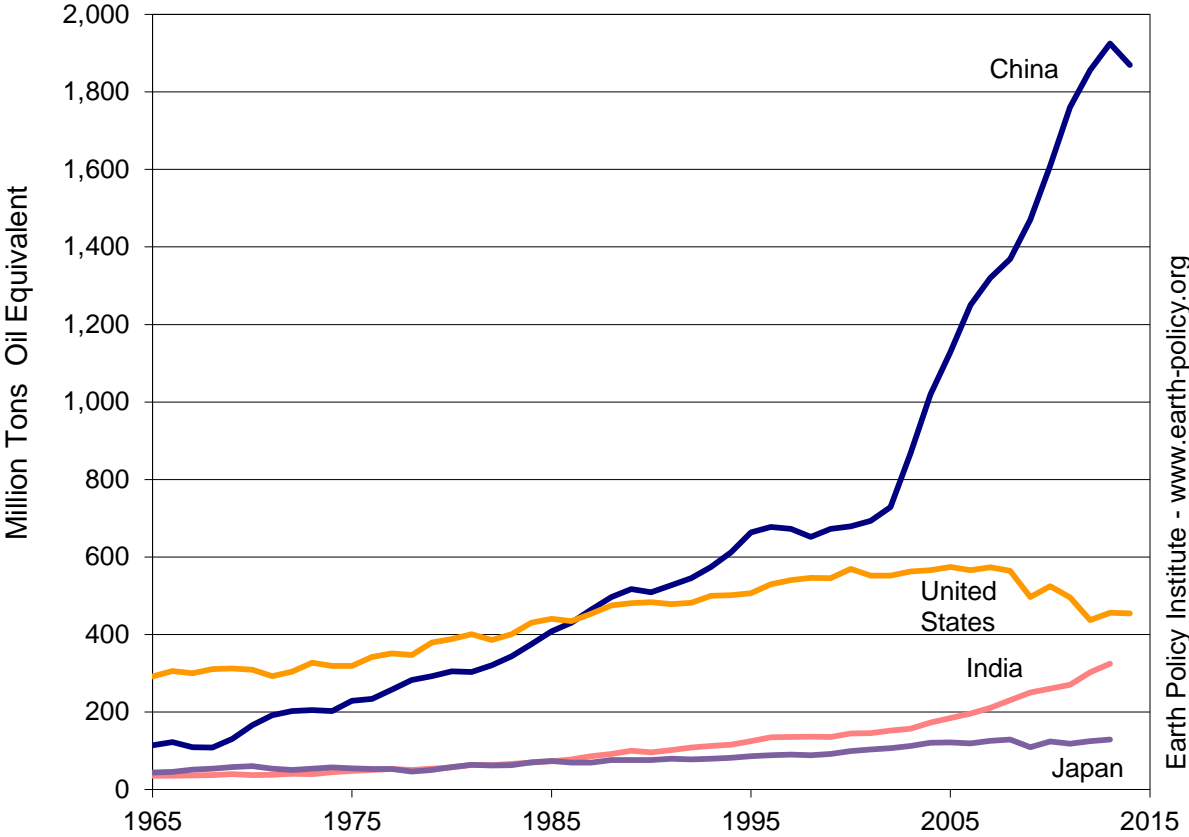
Coal Consumption in Top Ten Countries and the World, 1965-latest year

Year	China	United States	India	Japan	Russia	South Africa	South Korea	Germany	Poland	Indonesia	World Total
Million Tons Oil Equivalent											
1965	114	292	36	44	n.a.	25	5	164	59	0	1,432
1966	122	306	35	46	n.a.	24	6	153	60	0	1,448
1967	109	300	36	51	n.a.	25	5	147	61	0	1,426
1968	108	311	37	54	n.a.	26	5	149	64	0	1,447
1969	130	312	40	58	n.a.	26	5	154	68	0	1,480
1970	166	309	38	60	n.a.	27	6	152	70	0	1,505
1971	191	292	38	54	n.a.	29	6	145	72	0	1,496
1972	202	304	40	50	n.a.	29	6	140	75	0	1,517
1973	205	327	40	54	n.a.	31	7	141	75	0	1,559
1974	203	319	45	57	n.a.	33	8	140	78	0	1,557
1975	229	319	48	54	n.a.	35	8	128	84	0	1,592
1976	234	342	50	53	n.a.	37	9	134	88	0	1,654
1977	258	351	52	52	n.a.	38	10	131	91	0	1,709
1978	283	347	51	46	n.a.	37	10	132	95	0	1,734
1979	293	379	54	50	n.a.	40	12	140	96	0	1,802
1980	305	389	57	58	n.a.	43	13	140	102	0	1,806
1981	303	401	63	64	n.a.	51	15	141	91	0	1,820
1982	321	386	63	62	n.a.	56	15	140	94	0	1,846
1983	344	401	66	63	n.a.	56	16	141	94	0	1,896
1984	375	430	69	70	n.a.	61	20	147	98	0	1,982
1985	408	440	73	74	196	62	22	148	100	1	2,072
1986	430	435	78	70	200	63	23	143	102	1	2,103
1987	464	454	86	69	205	64	24	141	106	2	2,181
1988	497	475	92	76	201	70	25	140	103	2	2,246
1989	517	481	100	76	194	65	24	138	99	4	2,261
1990	509	483	95	76	181	67	24	130	80	4	2,215
1991	527	479	102	79	166	66	25	113	78	4	2,184
1992	545	482	108	78	155	62	24	104	73	4	2,160
1993	574	500	113	79	141	64	26	98	74	4	2,165
1994	612	502	116	82	126	68	27	96	72	5	2,180
1995	663	506	125	86	119	71	28	91	72	6	2,236
1996	677	529	134	88	116	75	32	90	73	7	2,284
1997	673	540	136	90	107	78	35	87	70	8	2,287
1998	652	546	136	88	101	77	36	85	64	9	2,256
1999	673	545	136	91	101	76	38	80	61	12	2,258
2000	679	569	144	99	105	75	43	85	58	14	2,343
2001	693	552	145	103	102	74	46	85	58	17	2,355
2002	728	552	152	107	103	76	49	85	57	18	2,412
2003	868	562	157	112	104	81	51	87	58	24	2,612
2004	1,020	566	172	121	100	85	53	85	57	22	2,799
2005	1,128	574	184	121	94	84	55	82	56	25	2,926
2006	1,250	566	195	119	97	85	55	84	58	30	3,079
2007	1,320	573	210	125	93	90	60	86	58	38	3,204
2008	1,369	564	230	129	100	97	66	80	56	30	3,262
2009	1,471	496	250	109	92	93	69	72	52	35	3,239
2010	1,610	525	260	124	90	92	76	77	56	41	3,469
2011	1,761	495	270	118	94	88	84	76	56	49	3,630
2012	1,856	437	302	124	98	88	81	80	54	50	3,724
2013	1,925	456	324	129	94	88	82	81	56	54	3,827
2014	1,869	455									

Note: "n.a." indicates data not available.

Source: Compiled by Earth Policy Institute from BP, *Statistical Review of World Energy June 2014* (London: 2014); 2014 for United States from U.S. Department of Energy, Energy Information Administration, Short Term Energy Outlook: Custom Table Builder, electronic database, at www.eia.gov/forecasts/steo/query, updated 13 January 2015; heat content data in 2014 assumed to be equivalent to that in 2013; 2014 for China based on a preliminary estimate of a 2.9 percent drop in consumption from the National Bureau of Statistics China, "Statistical Communiqué of the People's Republic of China on the 2014 National Economic and Social Development," press release, (Beijing: 26 February 2015).

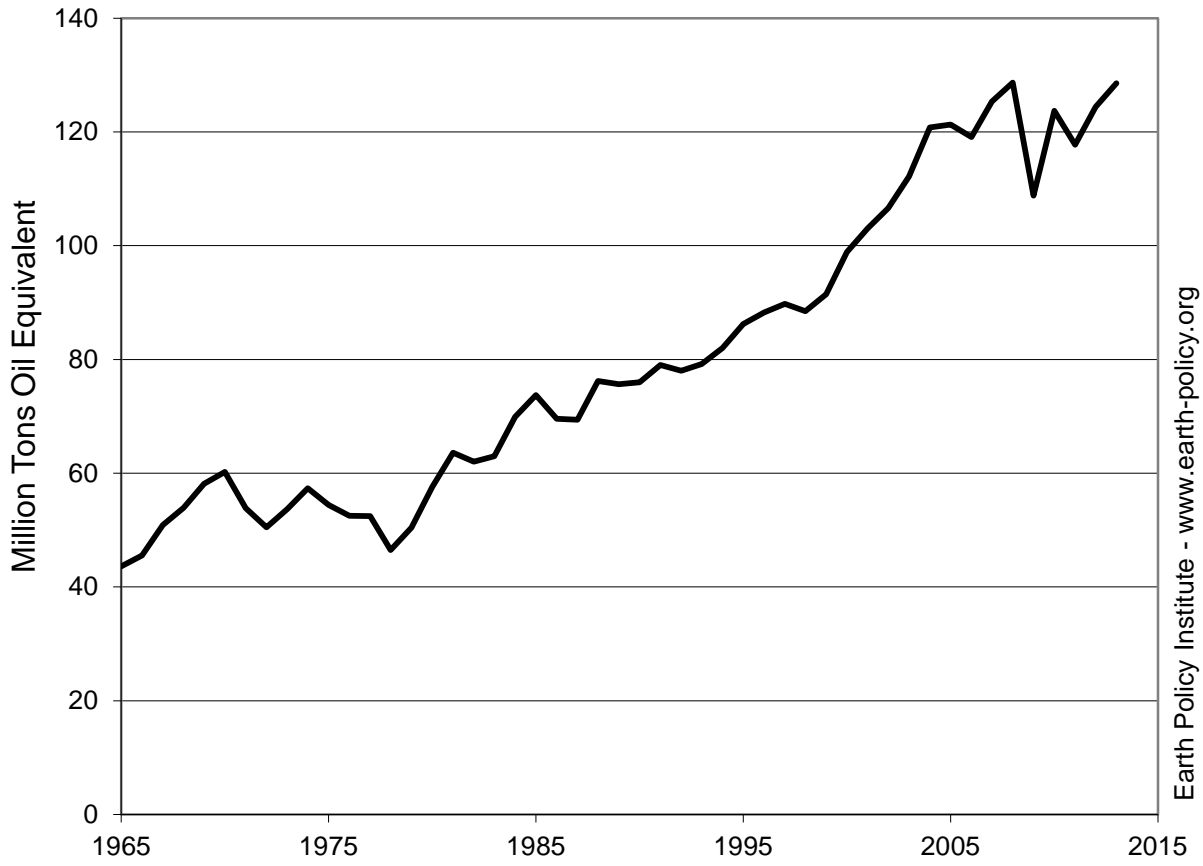
Coal Consumption in Top Countries, 1965-2014



Source: BP; NBS; EIA

Earth Policy Institute - www.earth-policy.org

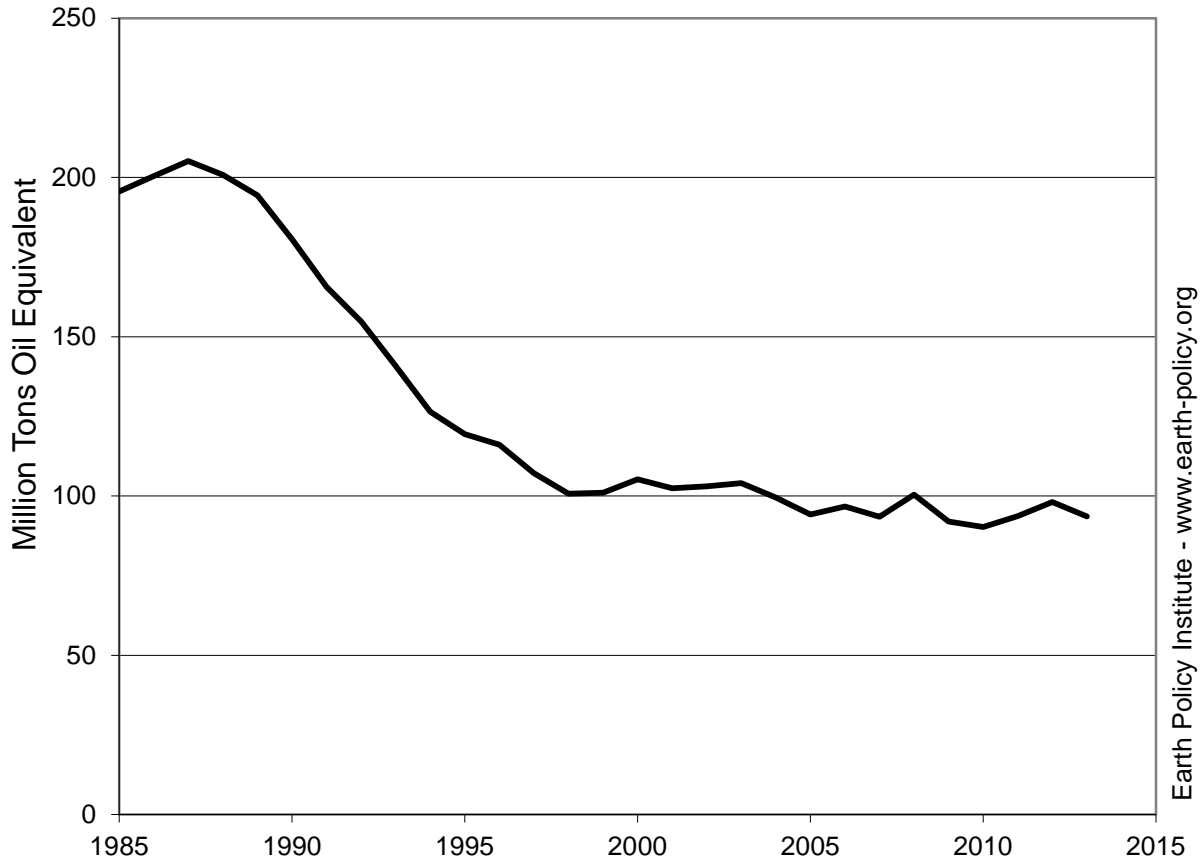
Coal Consumption in Japan, 1965-2013



Source: BP

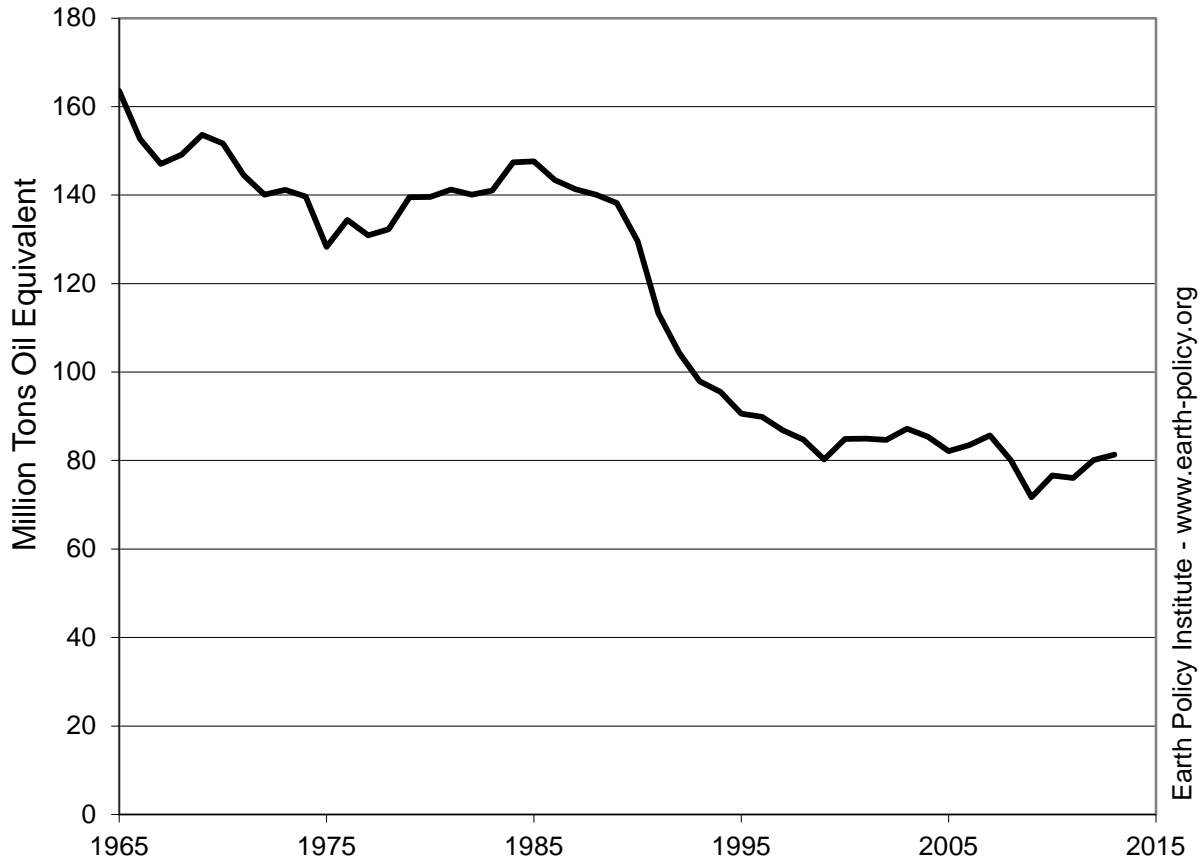
Earth Policy Institute - www.earth-policy.org

Coal Consumption in Russia, 1985-2013



Source: BP

Coal Consumption in Germany, 1965-2013



Source: BP

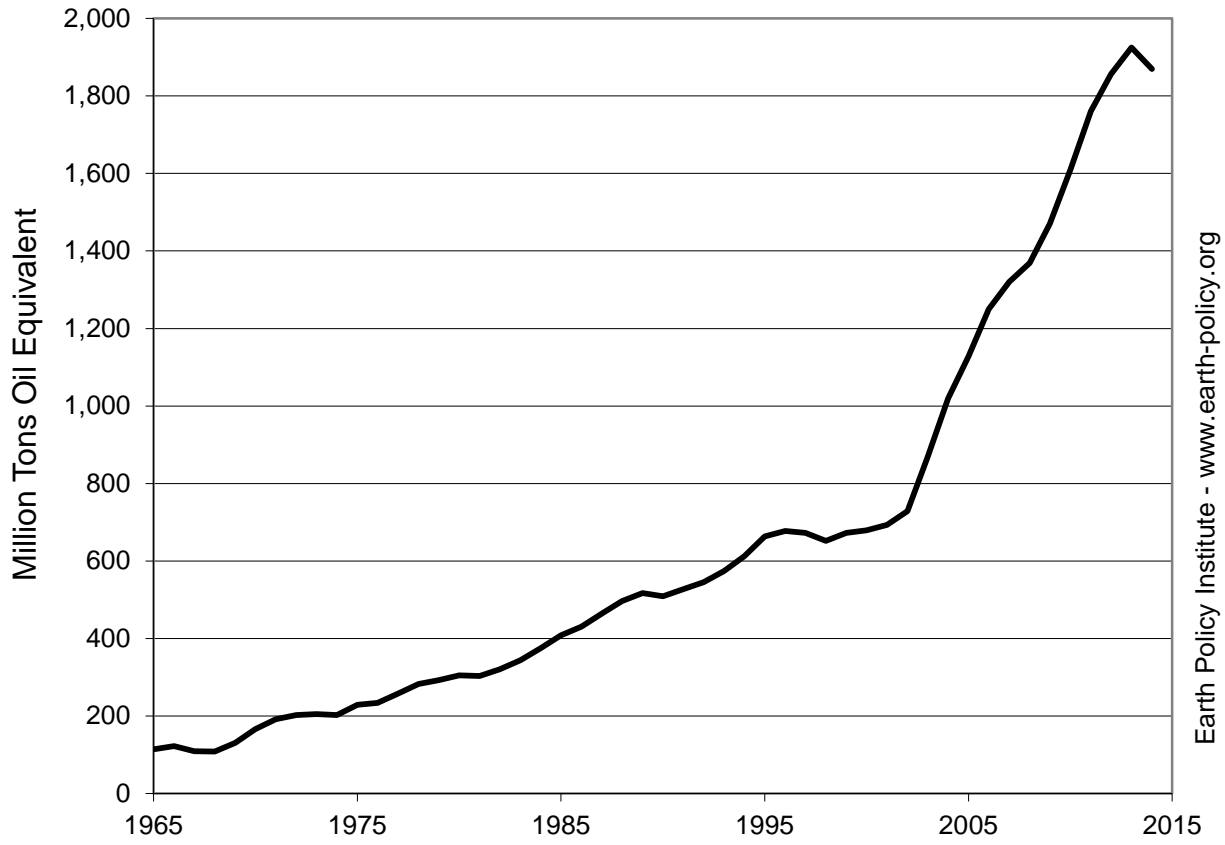
Earth Policy Institute - www.earth-policy.org

Coal Consumption in China, 1965-2014

Year	Consumption	
	Quadrillion Btu	Million Tons Oil Equivalent
1965	4.5	114
1966	4.9	122
1967	4.3	109
1968	4.3	108
1969	5.2	130
1970	6.6	166
1971	7.6	191
1972	8.0	202
1973	8.1	205
1974	8.0	203
1975	9.1	229
1976	9.3	234
1977	10.2	258
1978	11.2	283
1979	11.6	293
1980	12.1	305
1981	12.0	303
1982	12.7	321
1983	13.6	344
1984	14.9	375
1985	16.2	408
1986	17.1	430
1987	18.4	464
1988	19.7	497
1989	20.5	517
1990	20.2	509
1991	20.9	527
1992	21.6	545
1993	22.8	574
1994	24.3	612
1995	26.3	663
1996	26.9	677
1997	26.7	673
1998	25.9	652
1999	26.7	673
2000	27.0	679
2001	27.5	693
2002	28.9	728
2003	34.5	868
2004	40.5	1,020
2005	44.8	1,128
2006	49.6	1,250
2007	52.4	1,320
2008	54.3	1,369
2009	58.4	1,471
2010	63.9	1,610
2011	69.9	1,761
2012	73.7	1,856
2013	76.4	1,925
2014	74.2	1,869

Source: Compiled by Earth Policy Institute with figures through 2013 from BP, *Statistical Review of World Energy June 2014* (London: 2014); million tons oil equivalent converted to Btu using conversion factor from International Energy Agency, "Unit Converter," at www.iea.org/stats/unit.asp; 2014 is based on a preliminary estimate of a 2.9 percent drop in consumption from the National Bureau of Statistics China, "Statistical Communiqué of the People's Republic of China on the 2014 National Economic and Social Development," press release, (Beijing: 26 February 2015).

Coal Consumption in China, 1965-2014



Source: BP; NBS

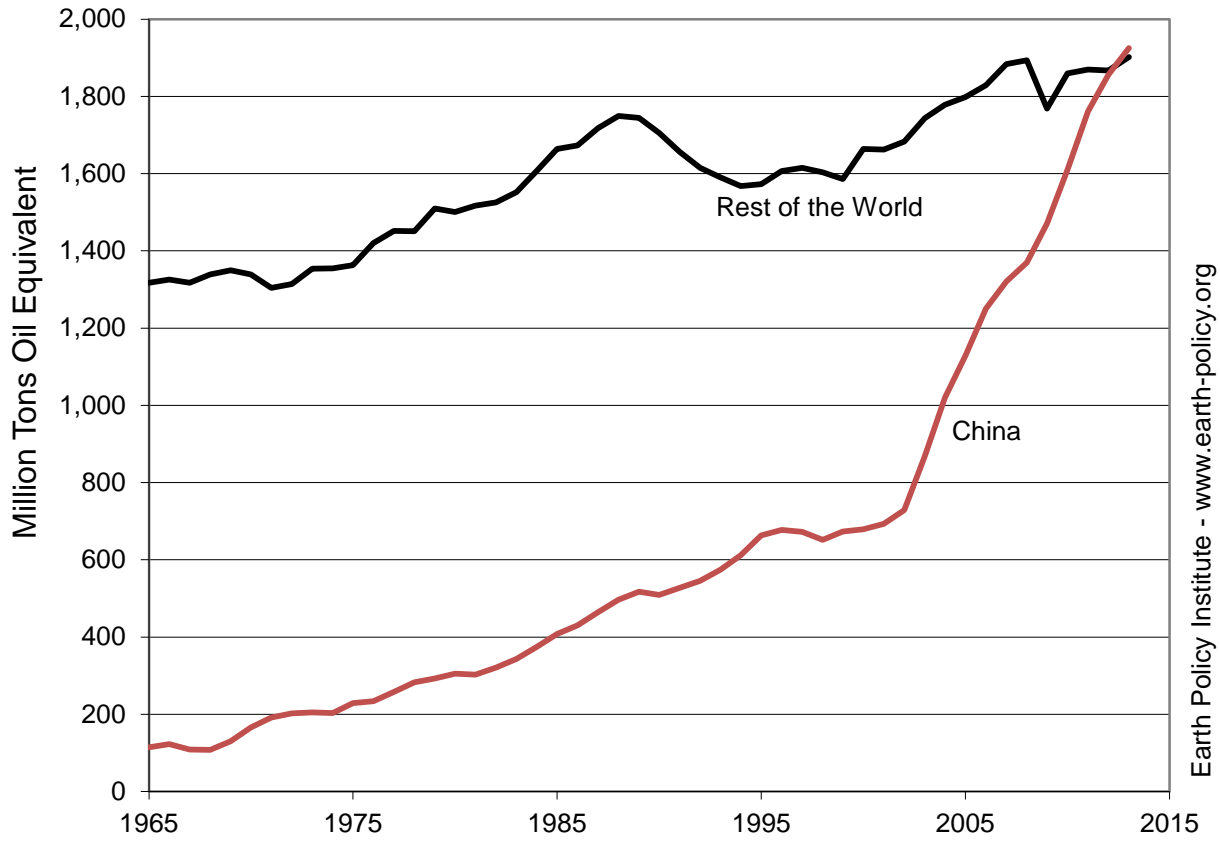
Earth Policy Institute - www.earth-policy.org

Coal Consumption in China and the Rest of the World, 1965-2013

Year	China	Rest of World	Total World
	Million Tons Oil Equivalent		
1965	114	1,317	1,432
1966	122	1,326	1,448
1967	109	1,317	1,426
1968	108	1,339	1,447
1969	130	1,350	1,480
1970	166	1,339	1,505
1971	191	1,304	1,496
1972	202	1,314	1,517
1973	205	1,354	1,559
1974	203	1,354	1,557
1975	229	1,363	1,592
1976	234	1,420	1,654
1977	258	1,452	1,709
1978	283	1,451	1,734
1979	293	1,509	1,802
1980	305	1,501	1,806
1981	303	1,517	1,820
1982	321	1,526	1,846
1983	344	1,552	1,896
1984	375	1,607	1,982
1985	408	1,664	2,072
1986	430	1,673	2,103
1987	464	1,717	2,181
1988	497	1,749	2,246
1989	517	1,744	2,261
1990	509	1,705	2,215
1991	527	1,657	2,184
1992	545	1,615	2,160
1993	574	1,590	2,165
1994	612	1,568	2,180
1995	663	1,573	2,236
1996	677	1,606	2,284
1997	673	1,615	2,287
1998	652	1,604	2,256
1999	673	1,586	2,258
2000	679	1,664	2,343
2001	693	1,662	2,355
2002	728	1,683	2,412
2003	868	1,744	2,612
2004	1,020	1,779	2,799
2005	1,128	1,798	2,926
2006	1,250	1,829	3,079
2007	1,320	1,884	3,204
2008	1,369	1,893	3,262
2009	1,471	1,768	3,239
2010	1,610	1,859	3,469
2011	1,761	1,870	3,630
2012	1,856	1,867	3,724
2013	1,925	1,901	3,827

Source: Compiled by Earth Policy Institute from BP, *Statistical Review of World Energy June 2014* (London: 2014).

Coal Consumption in China and the Rest of the World, 1965-2013



Source: BP

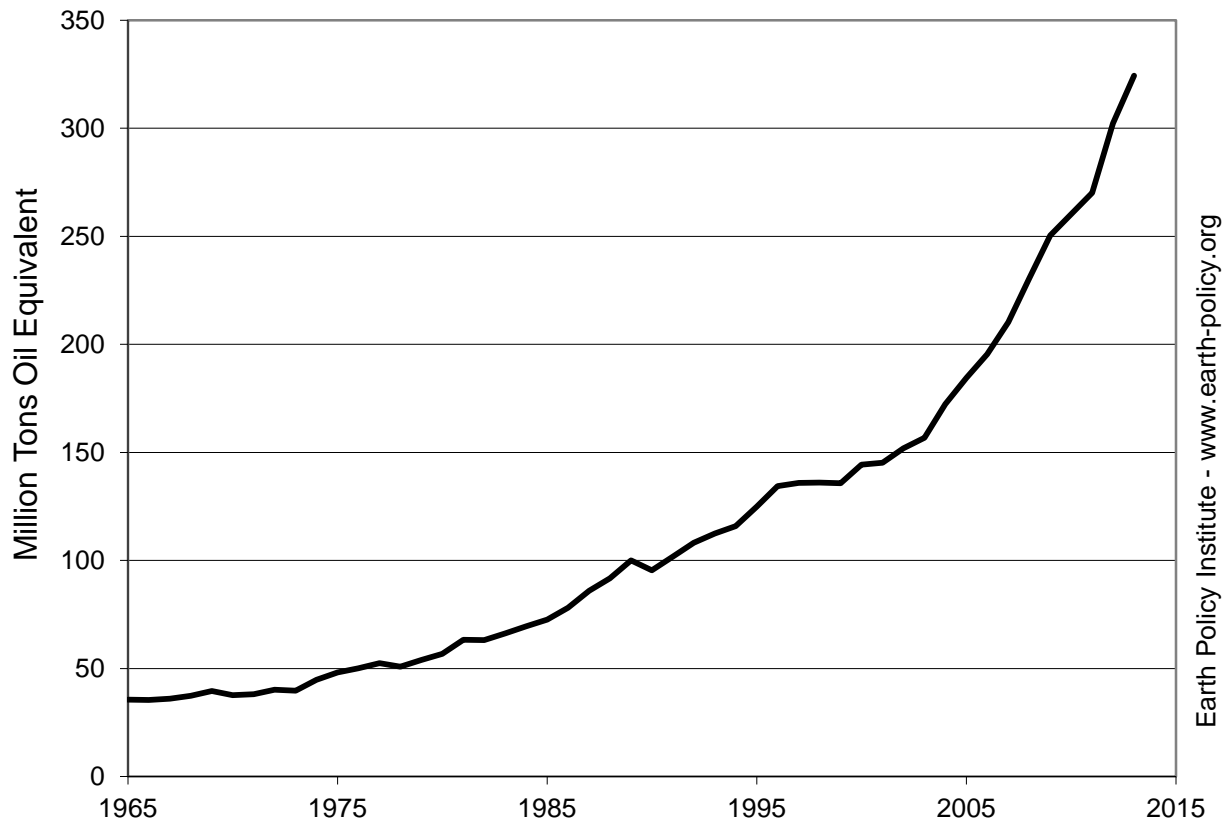
Earth Policy Institute - www.earth-policy.org

Coal Consumption in India, 1965-2013

Year	Consumption	
	Quadrillion Btu	Million Tons Oil Equivalent
1965	1.4	36
1966	1.4	35
1967	1.4	36
1968	1.5	37
1969	1.6	40
1970	1.5	38
1971	1.5	38
1972	1.6	40
1973	1.6	40
1974	1.8	45
1975	1.9	48
1976	2.0	50
1977	2.1	52
1978	2.0	51
1979	2.1	54
1980	2.3	57
1981	2.5	63
1982	2.5	63
1983	2.6	66
1984	2.8	69
1985	2.9	73
1986	3.1	78
1987	3.4	86
1988	3.6	92
1989	4.0	100
1990	3.8	95
1991	4.0	102
1992	4.3	108
1993	4.5	113
1994	4.6	116
1995	5.0	125
1996	5.3	134
1997	5.4	136
1998	5.4	136
1999	5.4	136
2000	5.7	144
2001	5.8	145
2002	6.0	152
2003	6.2	157
2004	6.8	172
2005	7.3	184
2006	7.8	195
2007	8.3	210
2008	9.1	230
2009	9.9	250
2010	10.3	260
2011	10.7	270
2012	12.0	302
2013	12.9	324

Source: Compiled by Earth Policy Institute from BP, *Statistical Review of World Energy June 2014* (London: 2014); million tons oil equivalent converted to BTU using conversion factor from International Energy Agency, "Unit Converter," at www.iea.org/stats/unit.asp.

Coal Consumption in India, 1965-2013



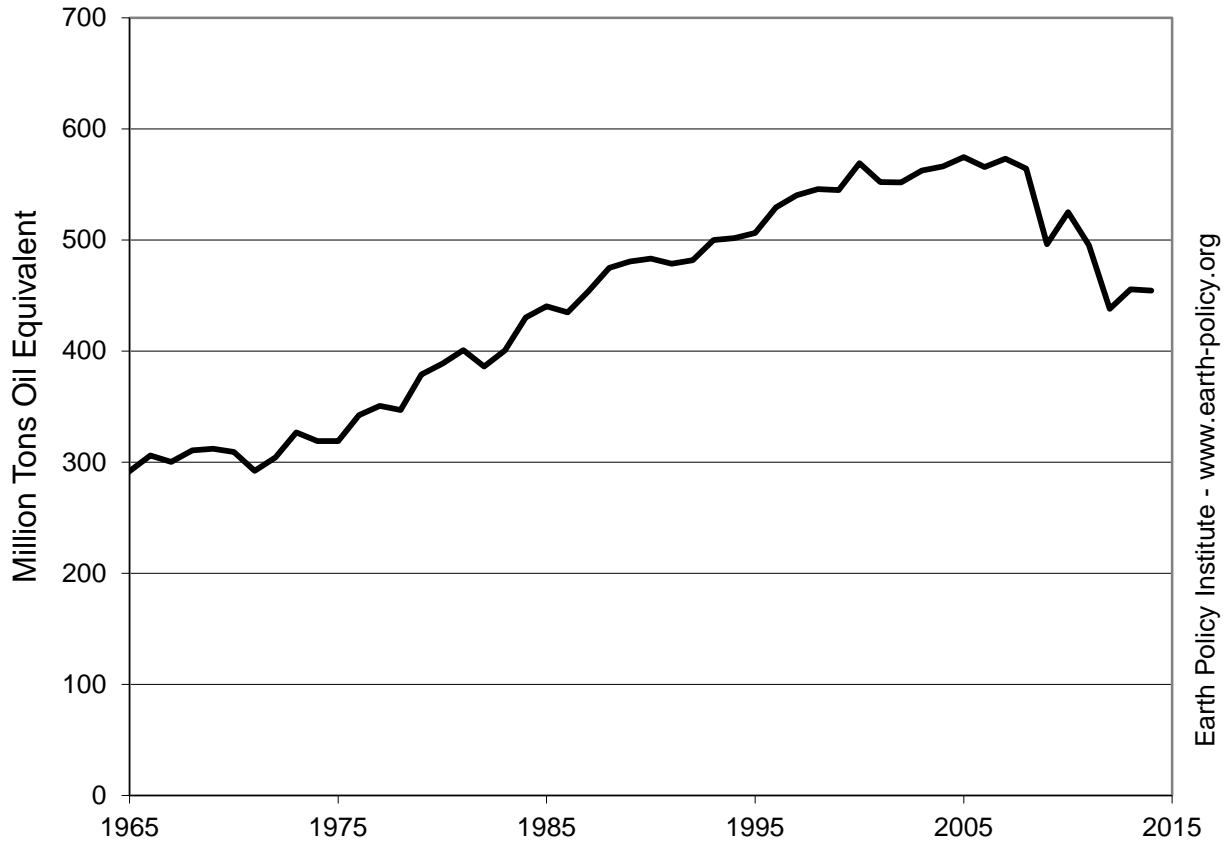
Source: BP

Coal Consumption in the United States, 1950-2014

Year	Coal Consumption	
	Quadrillion Btu	Million Tons of Oil Equivalent
1950	12.3	311
1951	12.6	316
1952	11.3	285
1953	11.4	287
1954	9.7	245
1955	11.2	281
1956	11.3	286
1957	10.8	273
1958	9.5	240
1959	9.5	240
1960	9.8	248
1961	9.6	243
1962	9.9	250
1963	10.4	262
1964	11.0	276
1965	11.6	292
1966	12.1	306
1967	11.9	300
1968	12.3	311
1969	12.4	312
1970	12.3	309
1971	11.6	292
1972	12.1	304
1973	13.0	327
1974	12.7	319
1975	12.7	319
1976	13.6	342
1977	13.9	351
1978	13.8	347
1979	15.0	379
1980	15.4	389
1981	15.9	401
1982	15.3	386
1983	15.9	401
1984	17.1	430
1985	17.5	440
1986	17.3	435
1987	18.0	454
1988	18.8	475
1989	19.1	481
1990	19.2	483
1991	19.0	479
1992	19.1	482
1993	19.8	500
1994	19.9	502
1995	20.1	506
1996	21.0	529
1997	21.4	540
1998	21.7	546
1999	21.6	545
2000	22.6	569
2001	21.9	552
2002	21.9	552
2003	22.3	562
2004	22.5	566
2005	22.8	574
2006	22.4	566
2007	22.7	573
2008	22.4	564
2009	19.7	496
2010	20.8	525
2011	19.7	495
2012	17.4	438
2013	18.1	456
2014	18.0	455

Source: Compiled by Earth Policy Institute with consumption data for 1950-2013 from "Coal Consumption by Sector," Table 6.2 and heat content data for 1950-2013 from "Approximate Heat Content of Coal and Coke Coal," Table A5 in U.S. Department of Energy (DOE), Energy Information Administration (EIA), "Monthly Energy Review," at www.eia.gov/totalenergy/data/monthly, updated 28 January 2015; consumption for 2014 from DOE, EIA, *Short Term Energy Outlook: Custom Table Builder*, electronic database, at www.eia.gov/forecasts/steo/query, updated 13 January 2015; heat content data in 2014 assumed to be equivalent to that in 2013.

Coal Consumption in the United States, 1950-2014



Source: EIA

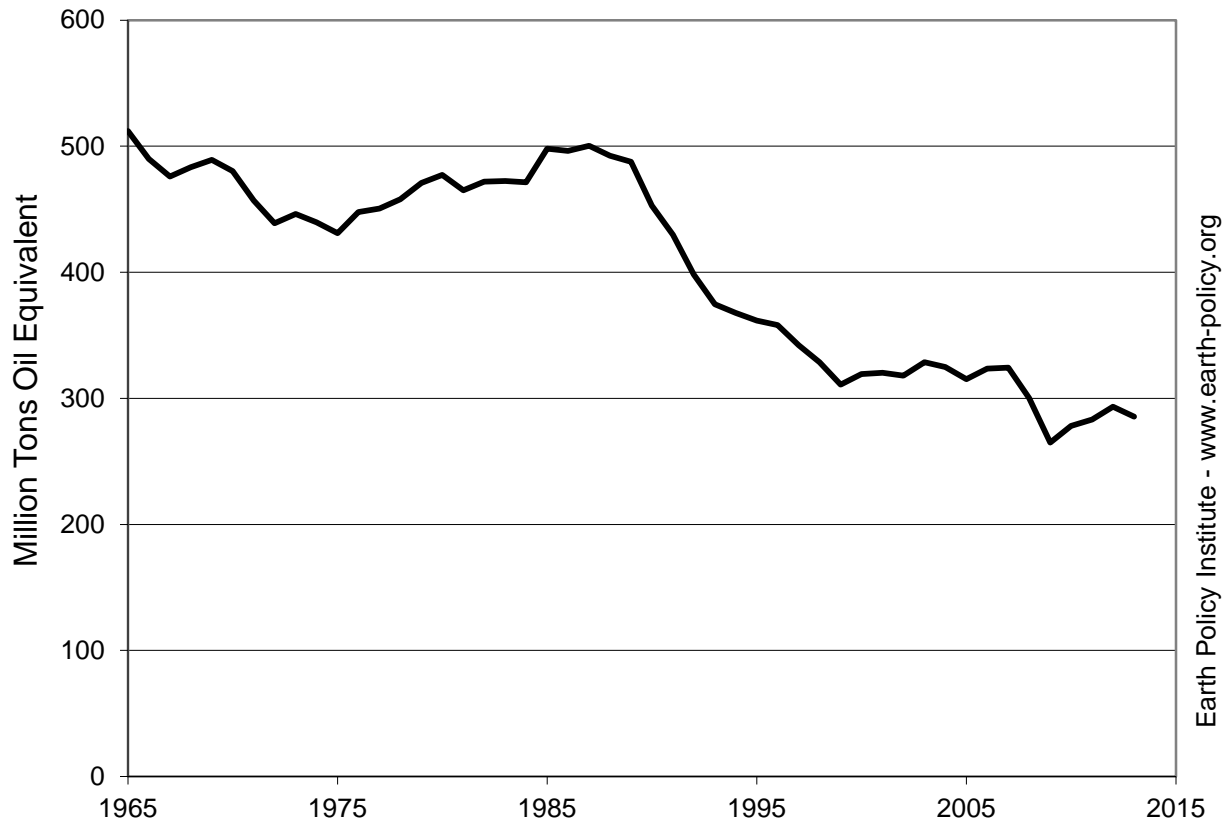
Earth Policy Institute - www.earth-policy.org

Coal Consumption in the European Union, 1965-2013

Year	Consumption	
	Quadrillion Btu	Million Tons Oil Equivalent
1965	20.3	512
1966	19.4	490
1967	18.9	476
1968	19.2	483
1969	19.4	489
1970	19.1	480
1971	18.1	457
1972	17.4	439
1973	17.7	446
1974	17.4	440
1975	17.1	431
1976	17.8	448
1977	17.9	450
1978	18.2	458
1979	18.7	471
1980	18.9	477
1981	18.5	465
1982	18.7	472
1983	18.7	472
1984	18.7	471
1985	19.8	498
1986	19.7	496
1987	19.9	500
1988	19.5	492
1989	19.4	488
1990	18.0	453
1991	17.1	430
1992	15.8	398
1993	14.9	375
1994	14.6	368
1995	14.3	362
1996	14.2	358
1997	13.6	342
1998	13.0	329
1999	12.3	311
2000	12.7	319
2001	12.7	320
2002	12.6	318
2003	13.0	329
2004	12.9	325
2005	12.5	315
2006	12.8	324
2007	12.9	324
2008	11.9	300
2009	10.5	265
2010	11.0	278
2011	11.2	283
2012	11.6	293
2013	11.3	285

Source: Compiled by Earth Policy Institute from BP, *Statistical Review of World Energy June 2014* (London: 2014); million tons oil equivalent converted to BTU using conversion factor from International Energy Agency, "Unit Converter," at www.iea.org/stats/unit.asp.

Coal Consumption in the European Union, 1965-2013



Source: BP

Earth Policy Institute - www.earth-policy.org

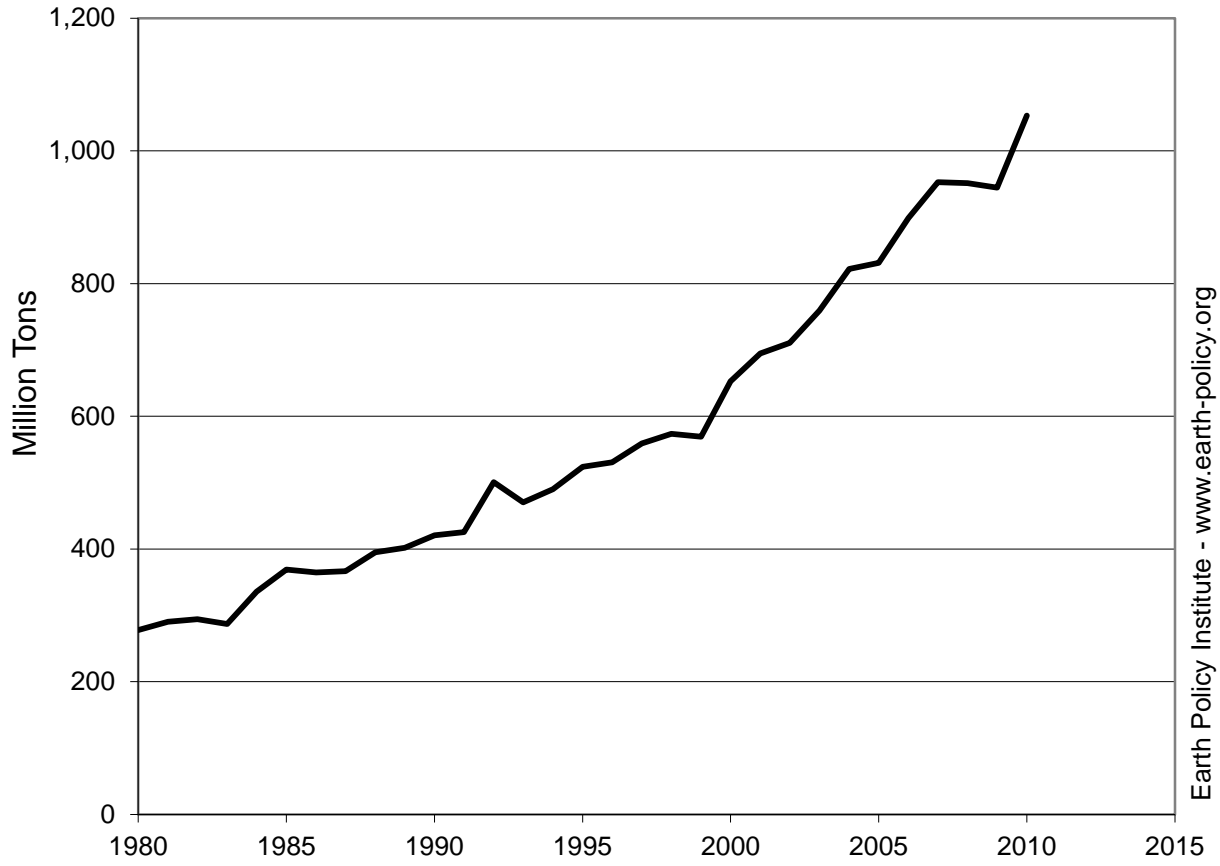
Coal Imports in Top Ten Countries and the World, 1980-2012

Year	China	Japan	South Korea	India	Taiwan	Germany	United Kingdom	Russia	Turkey	Italy	World
Million Tons											
1980	2.0	68.7	5.2	0.3	4.7	n.a.	7.3	n.a.	0.8	17.2	277.7
1981	1.9	78.3	7.4	0.7	4.8	n.a.	4.3	n.a.	0.7	19.1	290.4
1982	2.2	79.2	9.2	1.4	5.6	n.a.	4.5	n.a.	1.1	19.9	294.5
1983	2.1	74.7	11.1	0.5	6.4	n.a.	5.1	n.a.	1.7	17.4	287.3
1984	2.5	87.3	13.1	0.6	7.5	n.a.	10.9	n.a.	2.0	20.8	335.6
1985	2.3	93.5	19.6	2.0	10.1	n.a.	13.0	n.a.	2.7	22.4	368.9
1986	2.5	90.5	20.5	2.1	10.7	n.a.	10.8	n.a.	3.0	20.7	364.8
1987	1.9	91.1	20.8	3.0	14.0	n.a.	10.0	n.a.	3.9	21.6	366.8
1988	1.7	101.5	23.8	3.7	17.5	n.a.	12.7	n.a.	4.5	20.0	394.9
1989	2.3	101.9	24.6	4.4	16.9	n.a.	12.7	n.a.	3.6	20.9	401.9
1990	2.0	105.2	24.1	5.1	18.5	n.a.	15.1	n.a.	5.6	20.7	420.4
1991	1.4	110.8	29.5	6.6	18.4	20.2	20.0	n.a.	6.3	20.5	425.6
1992	1.2	108.5	30.1	6.7	22.2	20.9	20.8	39.7	5.5	18.1	500.7
1993	1.4	110.4	36.0	7.5	25.4	18.2	19.1	28.6	5.7	14.6	470.4
1994	1.2	120.1	40.4	11.2	26.8	20.7	15.5	27.4	5.5	16.1	490.1
1995	1.6	124.7	45.9	13.7	28.9	19.8	16.5	23.1	6.1	19.2	523.9
1996	3.2	125.7	47.0	14.4	31.2	21.5	18.6	20.2	8.7	16.9	530.7
1997	2.0	133.4	50.6	18.7	36.3	25.3	20.6	20.9	10.7	15.8	559.0
1998	1.6	126.9	59.2	18.1	37.1	28.7	22.1	21.9	11.0	17.1	573.3
1999	1.7	137.6	52.2	22.1	41.3	28.7	20.7	16.2	9.3	17.6	569.2
2000	2.2	152.9	61.6	23.4	45.7	35.7	23.9	25.7	13.7	19.5	652.7
2001	2.7	156.7	65.0	22.8	49.1	42.4	35.7	28.1	8.6	20.1	694.8
2002	11.3	165.0	68.8	25.5	52.4	39.5	28.9	20.9	12.4	19.9	710.5
2003	11.1	170.8	70.4	23.6	55.1	40.2	32.9	25.3	16.7	22.1	759.2
2004	18.6	186.5	77.0	31.8	60.9	44.0	37.2	22.6	16.8	25.8	822.1
2005	26.2	180.3	74.2	41.2	60.6	40.9	44.9	22.8	17.8	25.0	831.1
2006	38.1	181.1	76.3	47.8	62.6	45.9	51.5	26.1	20.8	25.4	898.7
2007	51.0	189.6	85.4	54.0	65.8	51.0	44.4	23.9	23.4	25.4	952.6
2008	40.3	186.8	97.1	56.5	64.2	49.8	44.6	31.4	19.7	25.3	951.5
2009	126.0	165.2	99.7	77.7	58.7	41.7	38.3	24.4	20.6	18.9	944.5
2010	163.2	187.5	114.1	82.0	63.4	50.0	26.7	25.7	21.5	21.7	1,053.1
2011	182.1	176.1	125.3	83.5	66.7	51.3	32.6	27.7	24.0	23.3	1,103.2
2012	288.4	184.6	123.1	88.2	64.9	48.4	45.0	31.5	28.8	24.1	1,217.4

Note: "n.a." indicates data not available.

Source: Compiled by Earth Policy Institute from, U.S. Department of Energy, Energy Information Administration, *International Energy Statistics*, at www.eia.gov/cfapps/ipdbproject, viewed 2 April 2015; short tons converted to metric tons using International Energy Agency, "Unit Converter," at www.iea.org/statistics/resources/unitconverter, viewed 2 April 2015.

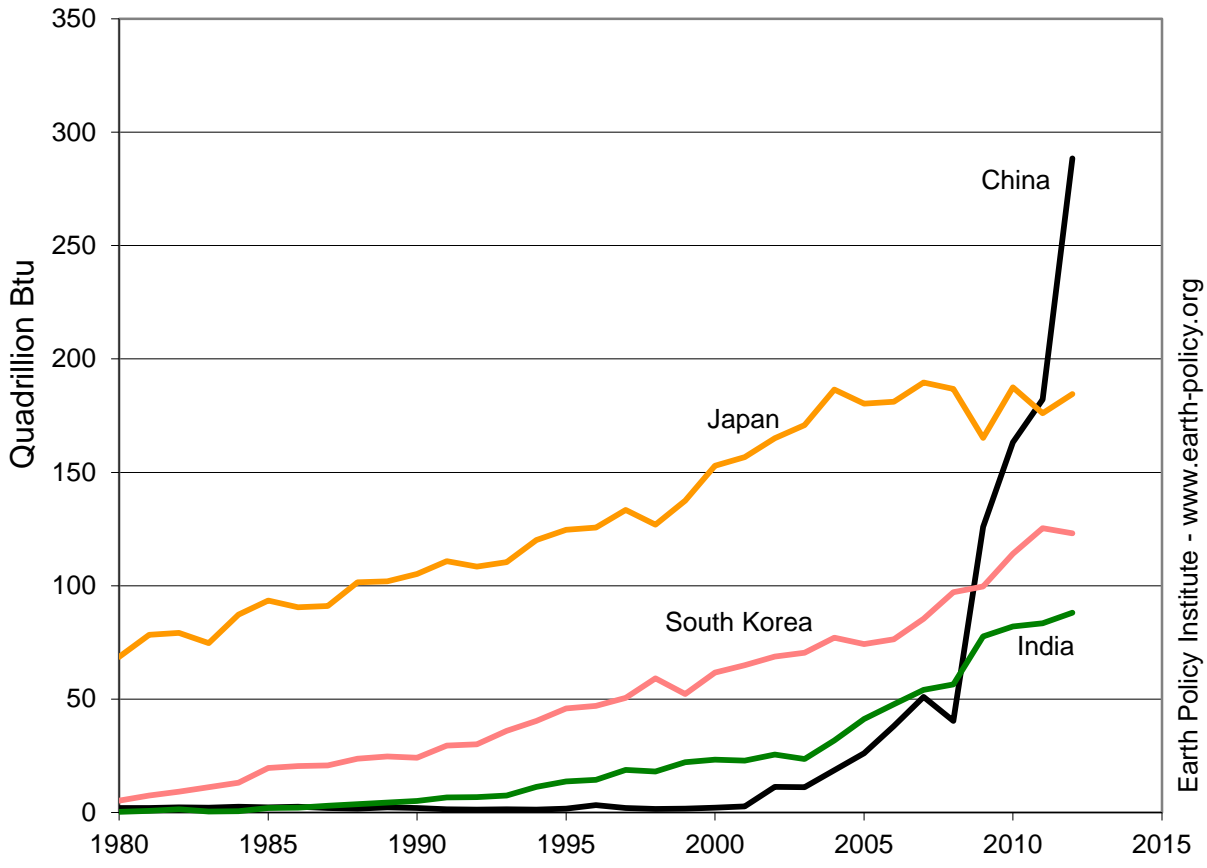
World Coal Imports, 1980-2012



Source: EIA

Earth Policy Institute - www.earth-policy.org

Coal Imports in Top Countries, 1980-2012



Source: EIA

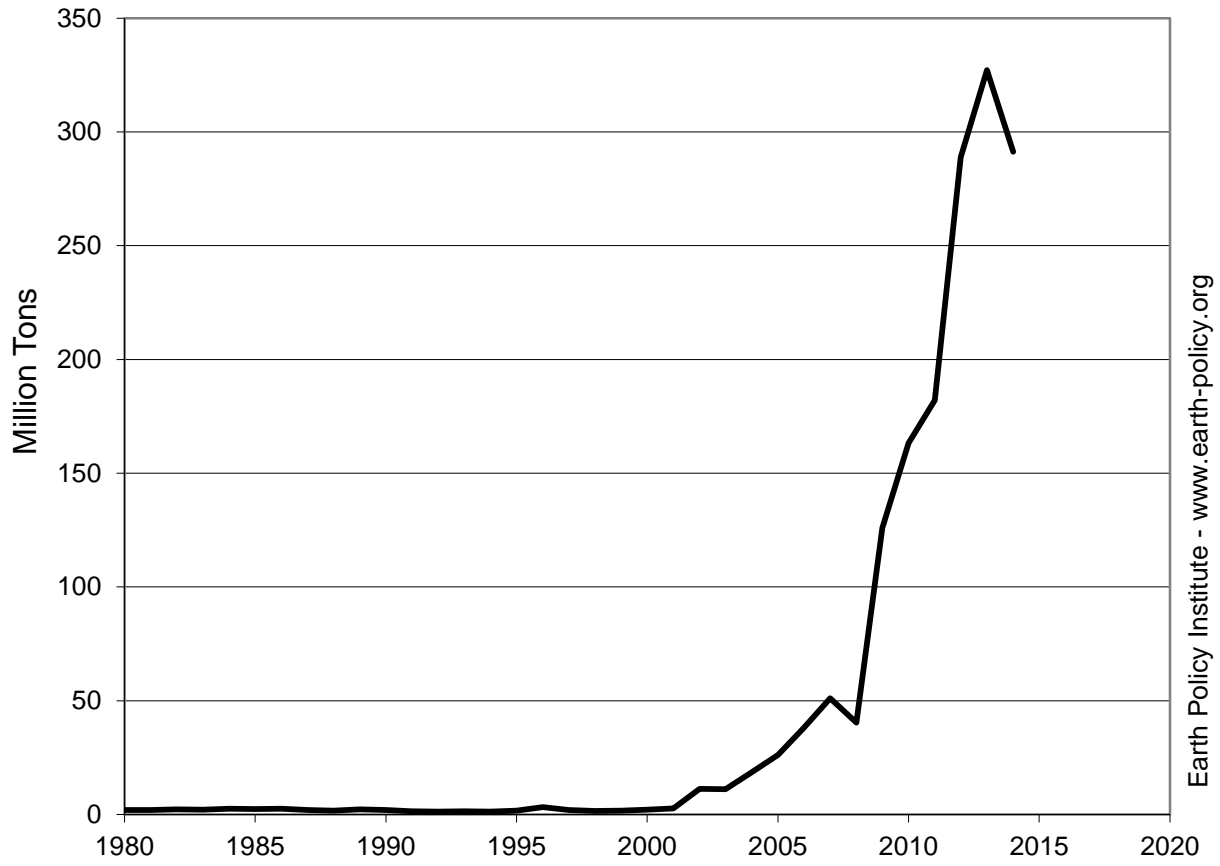
Earth Policy Institute - www.earth-policy.org

Coal Imports in China, 1980-2014

Year	Imports	
	Quadrillion Btu	Million Tons
1980	0.05	2.0
1981	0.05	1.9
1982	0.05	2.2
1983	0.05	2.1
1984	0.06	2.5
1985	0.06	2.3
1986	0.06	2.5
1987	0.05	1.9
1988	0.04	1.7
1989	0.06	2.3
1990	0.05	2.0
1991	0.03	1.4
1992	0.03	1.2
1993	0.03	1.4
1994	0.03	1.2
1995	0.04	1.6
1996	0.07	3.2
1997	0.04	2.0
1998	0.03	1.6
1999	0.04	1.7
2000	0.05	2.2
2001	0.06	2.7
2002	0.24	11.3
2003	0.23	11.1
2004	0.39	18.6
2005	0.55	26.2
2006	0.79	38.1
2007	1.06	51.0
2008	0.84	40.3
2009	2.63	126.0
2010	3.40	163.2
2011	3.79	182.1
2012	6.02	288.9
2013	6.46	327.1
2014	5.75	291.2

Source: Compiled by Earth Policy Institute from U.S. Department of Energy (DOE), Energy Information Administration (EIA), *International Energy Statistics*, at www.eia.gov/cfapps/ipdbproject, viewed 8 July 2014; 2013 from National Bureau of Statistics China, "Statistical Communiqué of the People's Republic of China on the 2013 National Economic and Social Development," press release, (Beijing: 24 February 2014); 2014 from National Bureau of Statistics China "Statistical Communiqué of the People's Republic of China on the 2014 National Economic and Social Development," press release, (Beijing: 26 February 2015); short tons converted to metric tons using International Energy Agency, "Unit Converter," at www.iea.org/statistics/resources/unitconverter, viewed 30 March 2015; tons converted to Btu using gross heat content from DOE, EIA op. cit. this note assuming heat content same as 2012.

Coal Imports in China, 1980-2014



Source: EIA, NBS

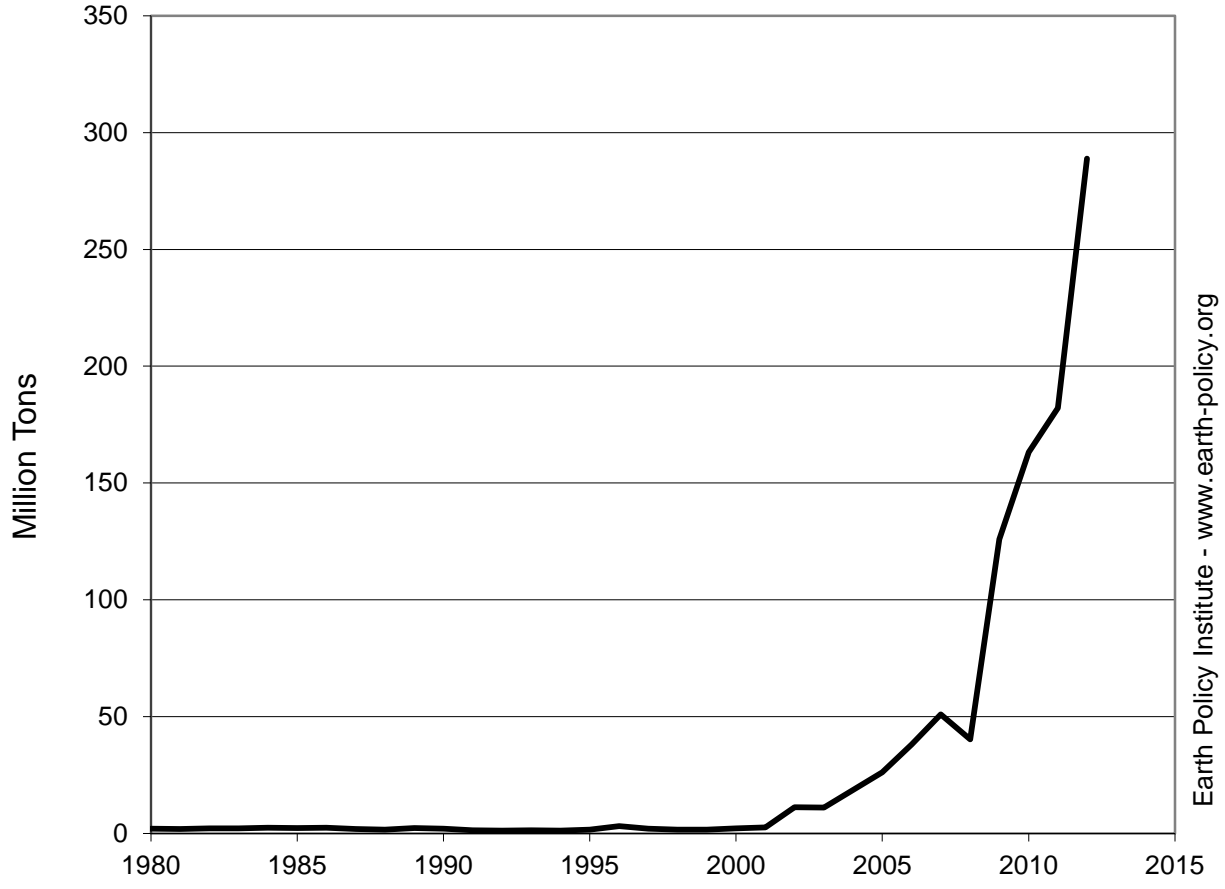
Earth Policy Institute - www.earth-policy.org

Coal Imports in India, 1980-2012

Year	Imports	
	Quadrillion Btu	Million Tons
1980	0.01	0.3
1981	0.02	0.7
1982	0.03	1.4
1983	0.01	0.5
1984	0.01	0.6
1985	0.05	2.0
1986	0.05	2.1
1987	0.07	3.0
1988	0.08	3.7
1989	0.10	4.4
1990	0.11	5.1
1991	0.15	6.6
1992	0.15	6.7
1993	0.24	7.5
1994	0.36	11.2
1995	0.38	13.7
1996	0.39	14.4
1997	0.48	18.7
1998	0.47	18.1
1999	0.57	22.1
2000	0.60	23.4
2001	0.59	22.8
2002	0.66	25.5
2003	0.61	23.6
2004	0.82	31.8
2005	1.06	41.2
2006	1.23	47.8
2007	1.39	54.0
2008	1.45	56.5
2009	1.99	77.7
2010	2.10	82.0
2011	2.14	83.5
2012	2.26	88.2

Source: Compiled by Earth Policy Institute from U.S. Department of Energy, Energy Information Administration, *International Energy Statistics*, at www.eia.gov/cfapps/ipdbproject, viewed 8 July 2014; short tons converted to metric tons using International Energy Agency, "Unit Converter," at www.iea.org/statistics/resources/unitconverter, viewed 30 March 2015.

Coal Imports in India, 1980-2012



Source: EIA

Earth Policy Institute - www.earth-policy.org

Coal Exports in Top Ten Countries and the World, 1980-2012

Year	Indonesia	Australia	Russia	United States	Colombia	South Africa	Canada	Kazakhstan	Mongolia	Vietnam	World
Million Tons											
1980	0	43	n.a.	85	0	29	15	n.a.	0	1	295
1981	0	47	n.a.	103	0	30	16	n.a.	0	1	296
1982	0	47	n.a.	97	0	28	16	n.a.	0	1	292
1983	0	56	n.a.	71	1	30	17	n.a.	0	0	285
1984	1	67	n.a.	75	1	38	25	n.a.	0	0	327
1985	1	84	n.a.	85	4	45	27	n.a.	0	1	363
1986	1	90	n.a.	78	6	46	26	n.a.	0	1	366
1987	1	96	n.a.	73	10	42	27	n.a.	1	0	367
1988	1	103	n.a.	87	10	44	32	n.a.	1	0	404
1989	2	100	n.a.	92	13	49	33	n.a.	1	1	420
1990	5	104	n.a.	97	15	50	31	n.a.	0	1	425
1991	9	121	n.a.	100	16	49	34	n.a.	0	1	433
1992	16	127	44	94	15	50	28	42	0	2	510
1993	19	132	28	68	18	54	29	34	0	1	470
1994	23	132	25	66	19	55	32	26	0	2	479
1995	31	137	30	82	19	60	34	21	0	3	530
1996	36	141	28	84	25	61	35	21	0	4	547
1997	42	158	26	77	28	64	37	25	0	3	575
1998	47	167	27	72	30	67	34	23	0	3	587
1999	55	172	32	54	30	66	34	17	0	3	578
2000	57	187	40	54	36	70	32	34	0	3	656
2001	66	192	45	45	39	69	30	32	0	4	708
2002	73	204	48	37	37	69	27	27	0	6	698
2003	88	209	59	40	46	70	28	33	0	6	758
2004	105	220	73	45	51	67	26	25	0	11	796
2005	129	232	89	47	54	71	28	25	2	18	848
2006	183	232	94	47	62	69	28	29	2	29	927
2007	195	244	102	55	65	67	31	26	3	32	963
2008	200	252	101	76	69	58	33	33	4	19	968
2009	233	262	108	55	68	52	29	29	7	25	948
2010	267	293	135	75	70	66	33	31	17	20	1,099
2011	301	285	127	98	81	69	34	30	24	18	1,167
2012	383	302	137	115	84	74	35	32	22	19	1,283

Note: "n.a." indicates data not available.

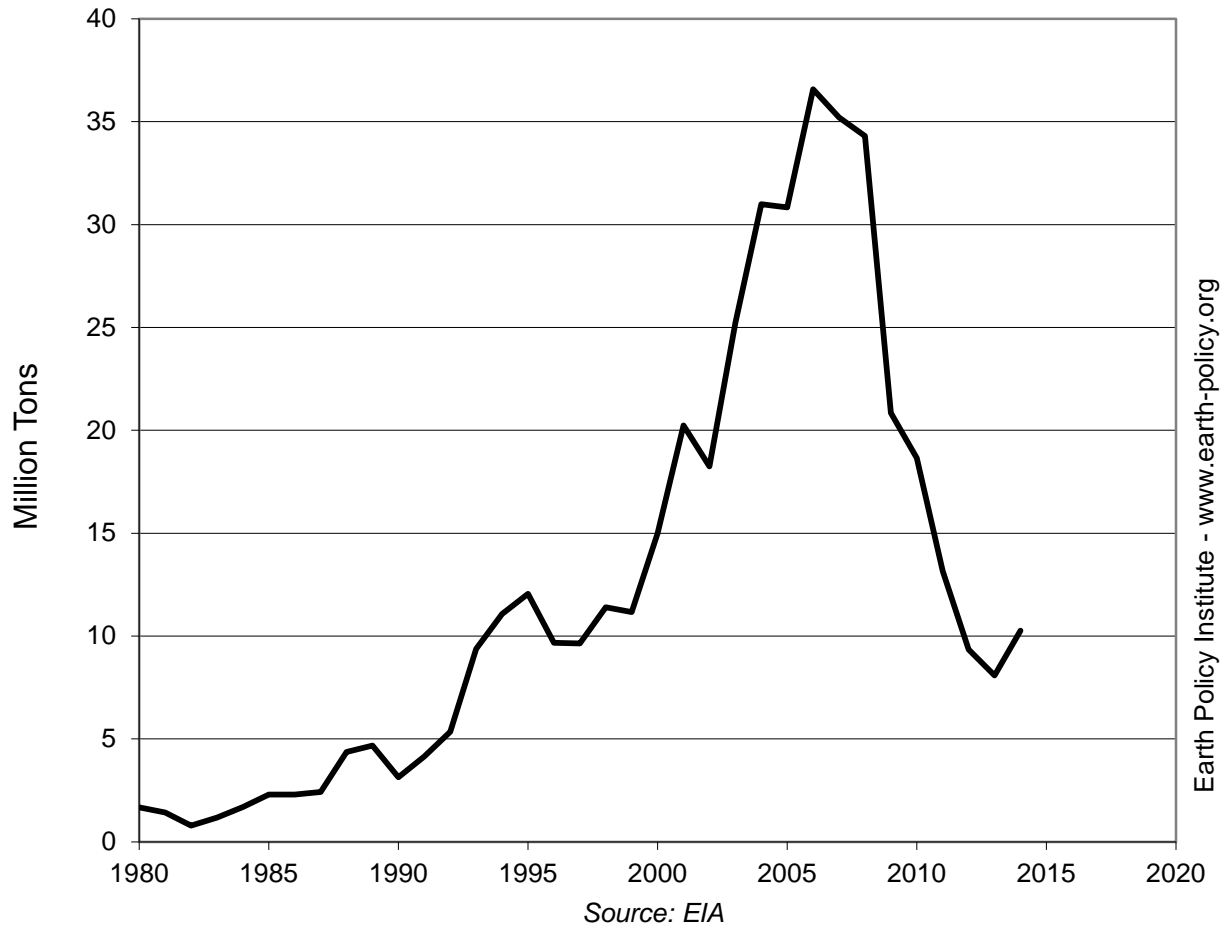
Source: Compiled by Earth Policy Institute from, U.S. Department of Energy, Energy Information Administration, *International Energy Statistics*, at www.eia.gov/cfapps/ipdbproject, viewed 2 April 2015; short tons converted to metric tons using International Energy Agency, "Unit Converter," at www.iaea.org/statistics/resources/unitconverter, viewed 2 April 2015.

Coal Imports and Exports in the United States, 1980-2014

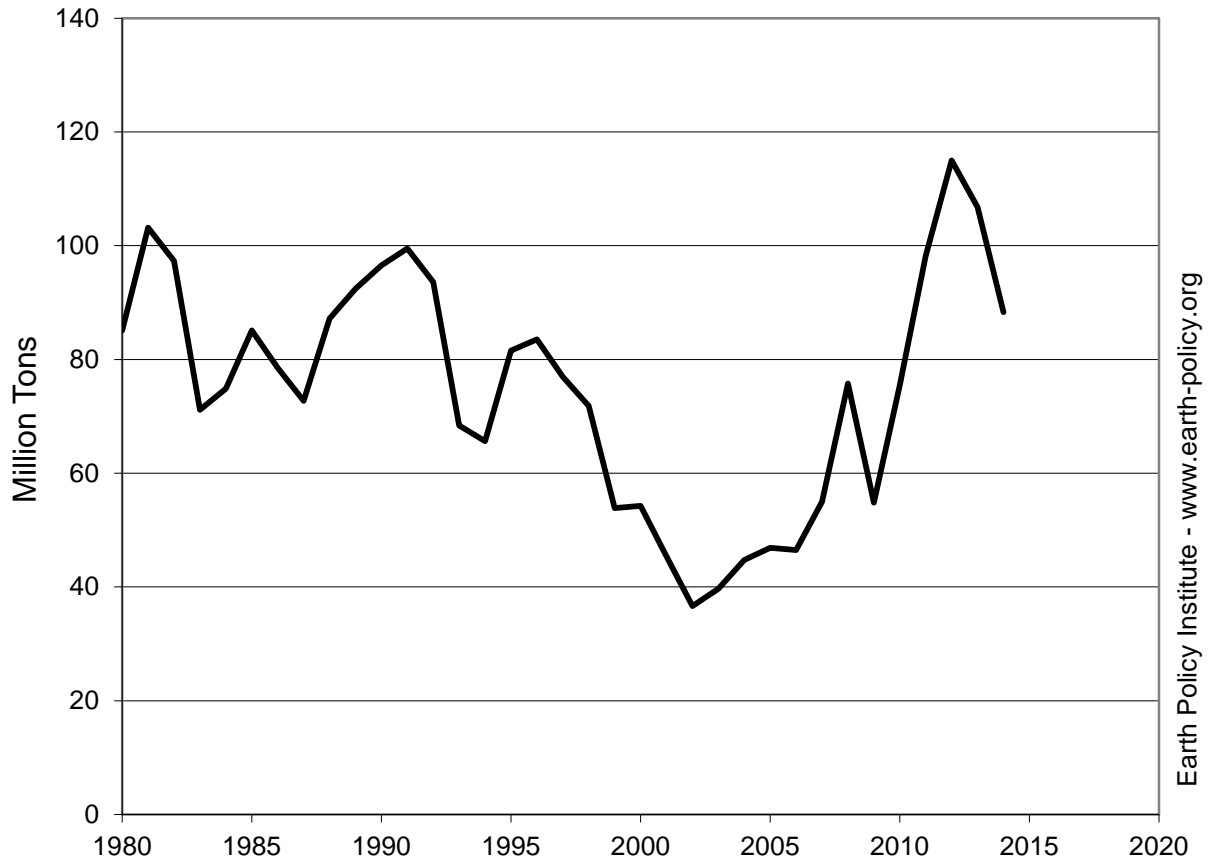
Year	Imports	Exports	Imports	Exports
	Million Tons		Quadrillion Btu	
1980	1.7	85.1	0.05	2.5
1981	1.4	103.2	0.04	3.0
1982	0.8	97.3	0.02	2.8
1983	1.2	71.2	0.03	2.1
1984	1.7	74.9	0.05	2.2
1985	2.3	85.1	0.06	2.5
1986	2.3	78.5	0.06	2.3
1987	2.4	72.7	0.07	2.1
1988	4.4	87.2	0.12	2.5
1989	4.7	92.4	0.13	2.7
1990	3.1	96.5	0.09	2.8
1991	4.1	99.5	0.11	2.9
1992	5.4	93.6	0.15	2.7
1993	9.4	68.4	0.26	2.0
1994	11.1	65.6	0.30	1.9
1995	12.1	81.5	0.33	2.4
1996	9.7	83.5	0.27	2.4
1997	9.6	76.9	0.27	2.2
1998	11.4	71.8	0.31	2.1
1999	11.2	53.9	0.31	1.5
2000	15.0	54.3	0.41	1.6
2001	20.2	45.4	0.56	1.3
2002	18.2	36.6	0.50	1.1
2003	25.2	39.7	0.69	1.1
2004	31.0	44.7	0.85	1.3
2005	30.8	46.9	0.85	1.3
2006	36.6	46.5	1.01	1.3
2007	35.2	55.0	0.97	1.5
2008	34.3	75.7	0.94	2.1
2009	20.9	54.8	0.57	1.5
2010	18.7	75.5	0.51	2.1
2011	13.2	98.2	0.36	2.8
2012	9.3	115.0	0.24	3.1
2013	8.1	106.7	0.21	2.9
2014	10.3	88.3	0.26	2.4

Source: Compiled by Earth Policy Institute with 1980-2013 from U.S. Department of Energy (DOE), Energy Information Administration (EIA), *International Energy Statistics*, at www.eia.gov/cfapps/ipdbproject, viewed 2 April 2015; short tons converted to metric tons using International Energy Agency, "Unit Converter," at www.iea.org/statistics/resources/unitconverter, viewed 30 March 2015; 2013-2014 data from "Coal Overview," Table 6.1, and heat content data for 1950-2014 from "Approximate Heat Content of Coal and Coke Coal," Table A5 in DOE, EIA, "Monthly Energy Review," at www.eia.gov/totalenergy/data/monthly, updated 26 March 2015.

Coal Imports in the United States, 1980-2014



Coal Exports from the United States, 1980-2014



Source: EIA

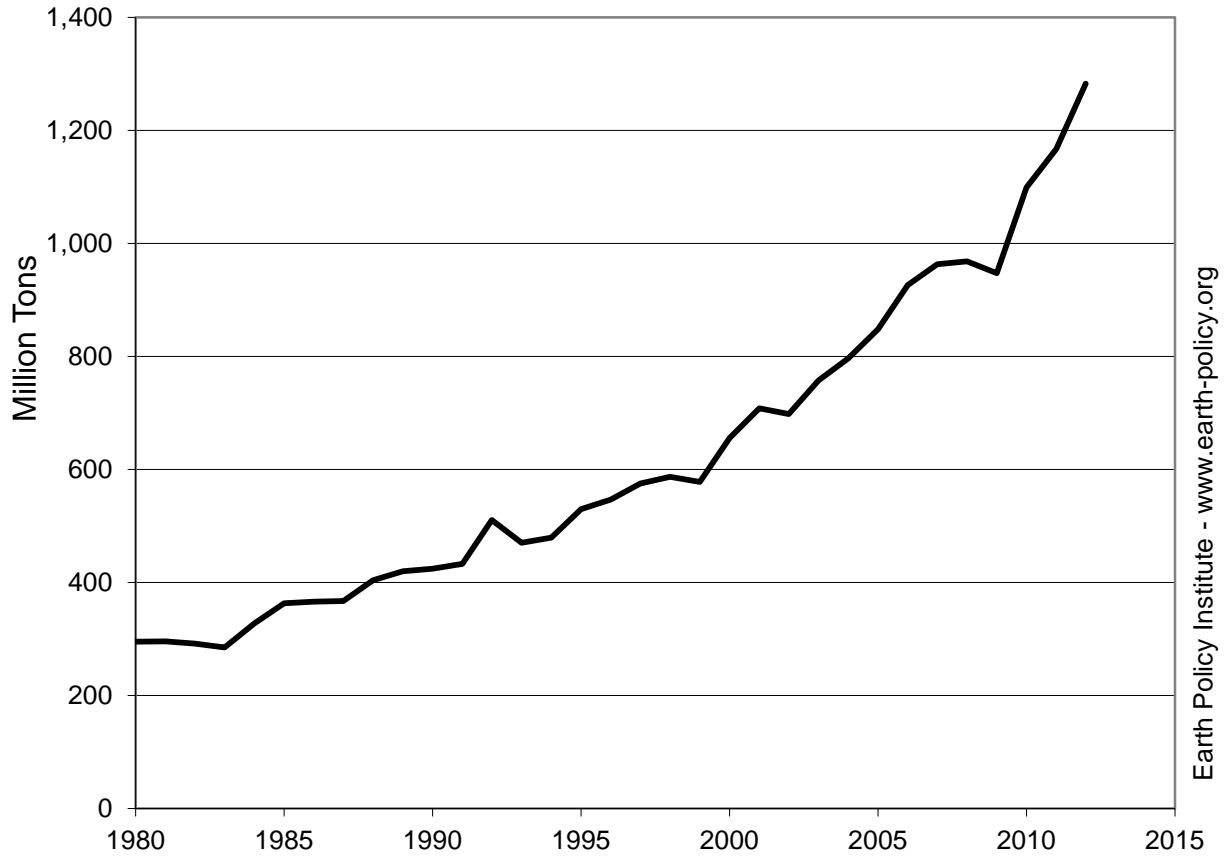
Earth Policy Institute - www.earth-policy.org

Global Coal Exports, 1980-2012

Year	Exports Million Tons
1980	295
1981	296
1982	292
1983	285
1984	327
1985	363
1986	366
1987	367
1988	404
1989	420
1990	425
1991	433
1992	510
1993	470
1994	479
1995	530
1996	547
1997	575
1998	587
1999	578
2000	656
2001	708
2002	698
2003	758
2004	796
2005	848
2006	927
2007	963
2008	968
2009	948
2010	1,099
2011	1,167
2012	1,283

Source: Compiled by Earth Policy Institute from, U.S. Department of Energy, Energy Information Administration, *International Energy Statistics*, at www.eia.gov/cfapps/ipdbproject, viewed 2 April 2015; short tons converted to metric tons using International Energy Agency, "Unit Converter," at www.iea.org/statistics/resources/unitconverter, viewed 30 March 2015.

Global Coal Exports, 1980-2012



Source: EIA

Earth Policy Institute - www.earth-policy.org