

The Great Transition: Shifting from Fossil Fuels to Solar and Wind Energy Supporting Data - United States

[U.S. Net Electricity Generation by Selected Sources, 1950-2014](#)

GRAPH: Annual Growth in U.S. Net Electricity Generation by Selected Sources, 2007-2014

[Cumulative Installed Solar Photovoltaics Capacity in the United States, 2000-2013](#)

GRAPH: Cumulative Installed Solar Photovoltaics Capacity in the United States, 2000-2013

[Solar-generated Electricity in the United States, 2000-2013](#)

GRAPH: Solar-generated Electricity in the United States, 2000-2013

[Cumulative Installed Wind Power Capacity and Net Annual Addition in the United States, 1980-2014](#)

GRAPH: Cumulative Installed Wind Power Capacity in the United States, 1980-2014

GRAPH: Net Annual Installed Wind Power Capacity Additions in the United States, 1981-2014

[U.S. Cumulative Installed Wind Power Capacity in Top 10 States, 2014](#)

[Wind-generated Electricity in the United States, 2000-2013](#)

GRAPH: Wind-generated Electricity in the United States, 2000-2013

[Wind Share of Net Electricity Generation by U.S. State, 2013 and 2014](#)

GRAPH: Wind Share of Net Electricity Generation in Top 10 U.S. States, 2014

[Cumulative Installed Geothermal Electricity-Generating Capacity in the United States, 1990-2013](#)

[U.S. Cumulative Installed Geothermal Electricity-Generating Capacity by State, 2013](#)

[Hydroelectric Generation in the United States, 1980-2014](#)

GRAPH: Hydroelectric Generation in the United States, 1980-2014

[U.S. Net Electricity Generation from Nuclear Power, 1960-2014, with Projection to 2015](#)

GRAPH: U.S. Net Electricity Generation from Nuclear Power, 1960-2015

[U.S. Nuclear Power Reactors in Operation, 1955-2014](#)

GRAPH: U.S. Nuclear Power Reactors in Operation, 1955-2014

[U.S. Nuclear Power Reactors Permanently Shut Down](#)

[Natural Gas Production in the United States, 1970-2013](#)

GRAPH: Natural Gas Production in the United States, 1970-2013

[Natural Gas Consumption in the United States, 1950-2014](#)

GRAPH: Natural Gas Consumption in the United States, 1950-2014

[Oil Production in the United States, 1965-2014](#)

GRAPH: Oil Production in the United States, 1965-2014

[Oil Consumption in the United States, 1965-2014](#)

GRAPH: Oil Consumption in the United States, 1965-2014

[Bicycle Sales in the United States, 1981-2013](#)

[U.S. Vehicle Registrations and Scrappage, 2001-2013](#)

GRAPH: Total Vehicles in Use in the United States, 2001-2013

[U.S. Vehicle Sales, 1931-2014](#)

GRAPH: U.S. Vehicle Sales, 1931-2014

[Monthly U.S. Sales of Leading Plug-in Electric Vehicles, December 2010 - February 2015](#)

[Number of Drivers in the United States, 1960-2011](#)

GRAPH: Number of Drivers in the United States, 1960-2011

[Teen Drivers in the United States, Total and Share of Teen Population, 1963-2012](#)

GRAPH: Number of Teen Drivers in the United States, 1963-2012

GRAPH: Teen Drivers as a Share of Teen Population in the United States, 1963-2012

[Miles Traveled by Cars, Trucks, and Motorcycles in the United States, 1960-2012](#)

GRAPH: Miles Traveled by Cars, Trucks, and Motorcycles in the United States, 1960-2012

[Average U.S. Retail Fuel Prices](#)

[U.S. Motor Gasoline Consumption, 1950-2014](#)

GRAPH: U.S. Motor Gasoline Consumption, 1950-2014

[Coal Production in the United States, 1981-2013](#)

GRAPH: Coal Production in the United States, 1981-2013

[Coal Consumption in the United States, 1950-2014](#)

GRAPH: Coal Consumption in United States, 1950-2014

[Coal Imports and Exports in the United States, 1980-2014](#)

GRAPH: Coal Imports in the United States, 1980-2014

GRAPH: Coal Exports from the United States, 1980-2014

A full listing of data for the entire book is on-line at:

http://www.earth-policy.org/books/tgt/tgt_data

This is part of a supporting dataset for **The Great Transition: Shifting from Fossil Fuels to Solar and Wind Energy**, by Lester R. Brown, with Janet Larsen, J. Matthew Roney, and Emily E. Adams (New York: W.W. Norton & Company, 2015).

For more information, see Earth Policy Institute on-line at www.earth-policy.org.

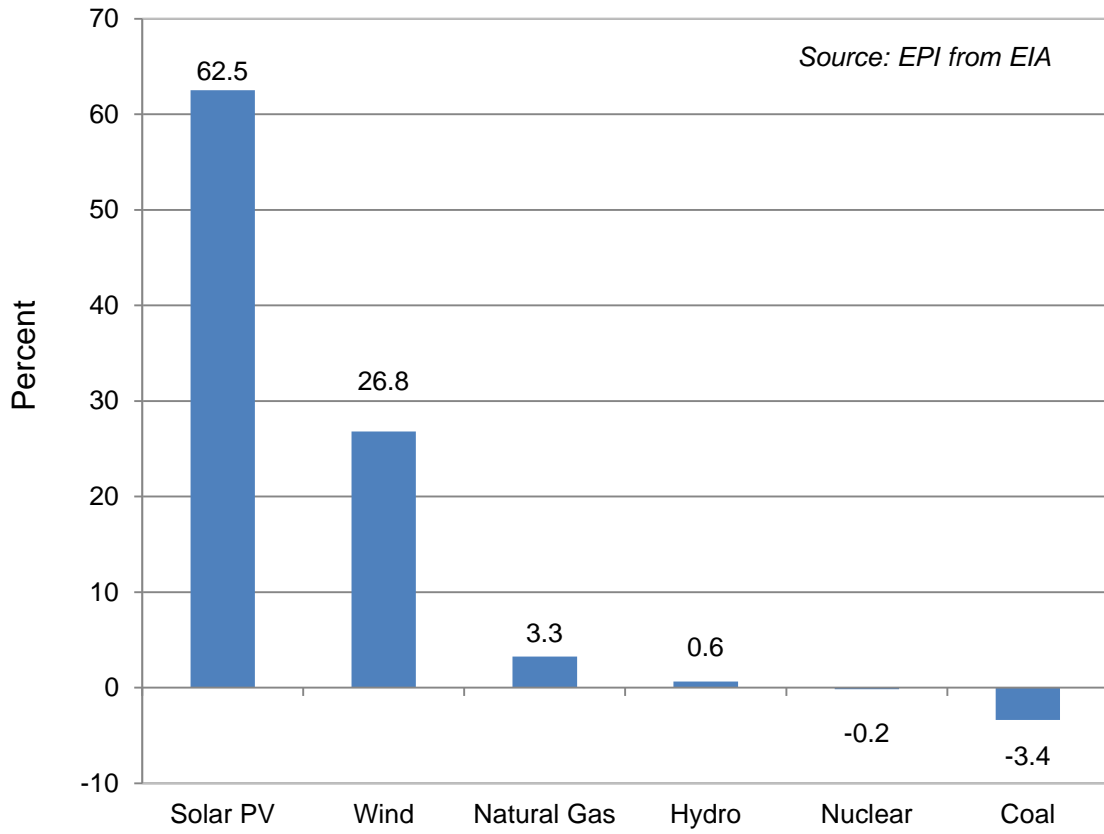
U.S. Net Electricity Generation by Selected Sources, 1950-2014

Year	Coal	Natural Gas	Nuclear	Hydro	Wind	Solar PV	Total from All
							Sources
Terawatt-hours							
1950	155	45	0	101	n.a.	n.a.	334
1951	185	57	0	104	n.a.	n.a.	375
1952	195	68	0	110	n.a.	n.a.	404
1953	219	80	0	110	n.a.	n.a.	447
1954	239	94	0	112	n.a.	n.a.	476
1955	301	95	0	116	n.a.	n.a.	550
1956	339	104	0	125	n.a.	n.a.	604
1957	346	114	0	133	n.a.	n.a.	635
1958	344	120	0	144	n.a.	n.a.	648
1959	378	147	0	141	n.a.	n.a.	713
1960	403	158	1	149	n.a.	n.a.	759
1961	422	169	2	156	n.a.	n.a.	797
1962	450	184	2	172	n.a.	n.a.	858
1963	494	202	3	169	n.a.	n.a.	920
1964	526	220	3	180	n.a.	n.a.	987
1965	571	222	4	197	n.a.	n.a.	1,058
1966	613	251	6	198	n.a.	n.a.	1,148
1967	630	265	8	225	n.a.	n.a.	1,218
1968	685	304	13	226	n.a.	n.a.	1,333
1969	706	333	14	253	n.a.	n.a.	1,445
1970	704	373	22	251	n.a.	n.a.	1,535
1971	713	374	38	270	n.a.	n.a.	1,616
1972	771	376	54	276	n.a.	n.a.	1,753
1973	848	341	83	275	n.a.	n.a.	1,864
1974	828	320	114	304	n.a.	n.a.	1,870
1975	853	300	173	303	n.a.	n.a.	1,921
1976	944	295	191	287	n.a.	n.a.	2,041
1977	985	306	251	224	n.a.	n.a.	2,127
1978	976	305	276	283	n.a.	n.a.	2,209
1979	1,075	329	255	283	n.a.	n.a.	2,251
1980	1,162	346	251	279	n.a.	n.a.	2,290
1981	1,203	346	273	264	n.a.	n.a.	2,298
1982	1,192	305	283	312	n.a.	n.a.	2,244
1983	1,259	274	294	335	0	n.a.	2,313
1984	1,342	297	328	324	0	0	2,419
1985	1,402	292	384	284	0	0	2,473
1986	1,386	249	414	294	0	0	2,490
1987	1,464	273	455	253	0	0	2,575
1988	1,541	253	527	226	0	0	2,707
1989	1,584	353	529	272	2	0	2,967
1990	1,594	373	577	293	3	0	3,038
1991	1,591	382	613	289	3	0	3,074
1992	1,621	404	619	253	3	0	3,084
1993	1,690	415	610	280	3	0	3,197
1994	1,691	460	640	260	3	0	3,248
1995	1,709	496	673	311	3	0	3,353
1996	1,795	455	675	347	3	1	3,444
1997	1,845	479	629	356	3	1	3,492
1998	1,874	531	674	323	3	1	3,620
1999	1,881	556	728	320	4	0	3,695
2000	1,966	601	754	276	6	0	3,802
2001	1,904	639	769	217	7	1	3,737
2002	1,933	691	780	264	10	1	3,858
2003	1,974	650	764	276	11	1	3,883
2004	1,978	710	789	268	14	1	3,971
2005	2,013	761	782	270	18	1	4,055
2006	1,991	816	787	289	27	1	4,065
2007	2,016	897	806	248	34	1	4,157
2008	1,986	883	806	255	55	1	4,119
2009	1,756	921	799	273	74	1	3,950
2010	1,847	988	807	260	95	1	4,125
2011	1,733	1,014	790	319	120	2	4,100
2012	1,514	1,226	769	276	141	4	4,048
2013	1,581	1,125	789	269	168	9	4,066
2014	1,586	1,122	797	259	182	18	4,093
Percent Annual Growth 2007-2014	-3.4	3.3	-0.2	0.6	26.8	62.5	-0.2

Note: "n.a." indicates data not available.

Source: Compiled by Earth Policy Institute with data for 1950-2012 from "Electricity Net Generation: Total (All Sectors)," Table 7.2a in U.S. Department of Energy (DOE), Energy Information Administration (EIA), "Monthly Energy Review," at www.eia.gov/totalenergy/data/monthly, updated 24 February 2015; and with data for 2013-14 from various tables in "Net Generation," Chapter 1 in DOE, EIA, "Electric Power Monthly", at www.eia.gov/electricity/monthly, updated 4 March 2015.

Annual Growth in U.S. Net Electricity Generation by Selected Sources, 2007-2014

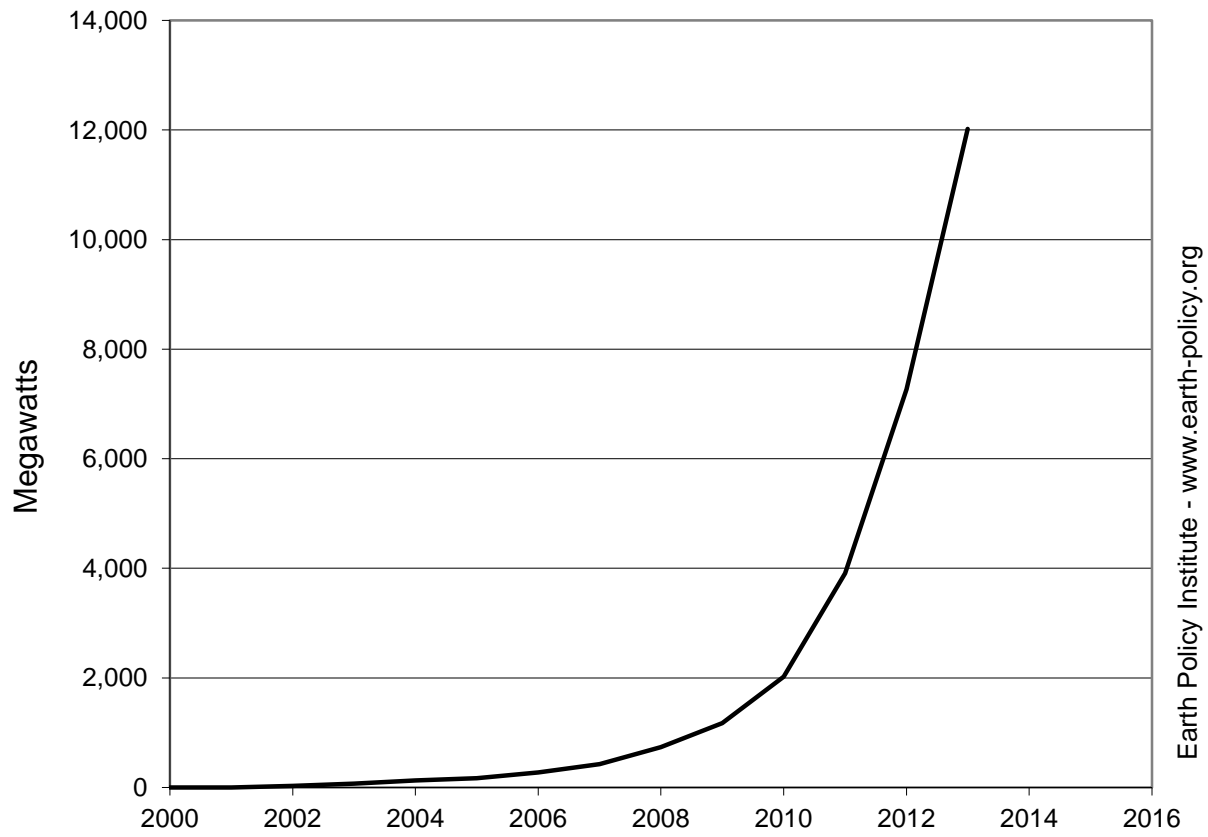


Cumulative Installed Solar Photovoltaics Capacity in the United States, 2000-2013

<u>Year</u>	<u>Cumulative Installations Megawatts</u>
2000	0
2001	0
2002	28
2003	73
2004	131
2005	172
2006	275
2007	427
2008	738
2009	1,172
2010	2,022
2011	3,910
2012	7,271
<u>2013</u>	<u>12,022</u>

Source: Figures are as published in BP, *Statistical Review of World Energy June 2014* (London: 2014). Note that previous datasets from other groups have reported higher numbers for the United States for the earlier years of the time series.

Cumulative Installed Solar Photovoltaics Capacity in the United States, 2000-2013



Source: BP

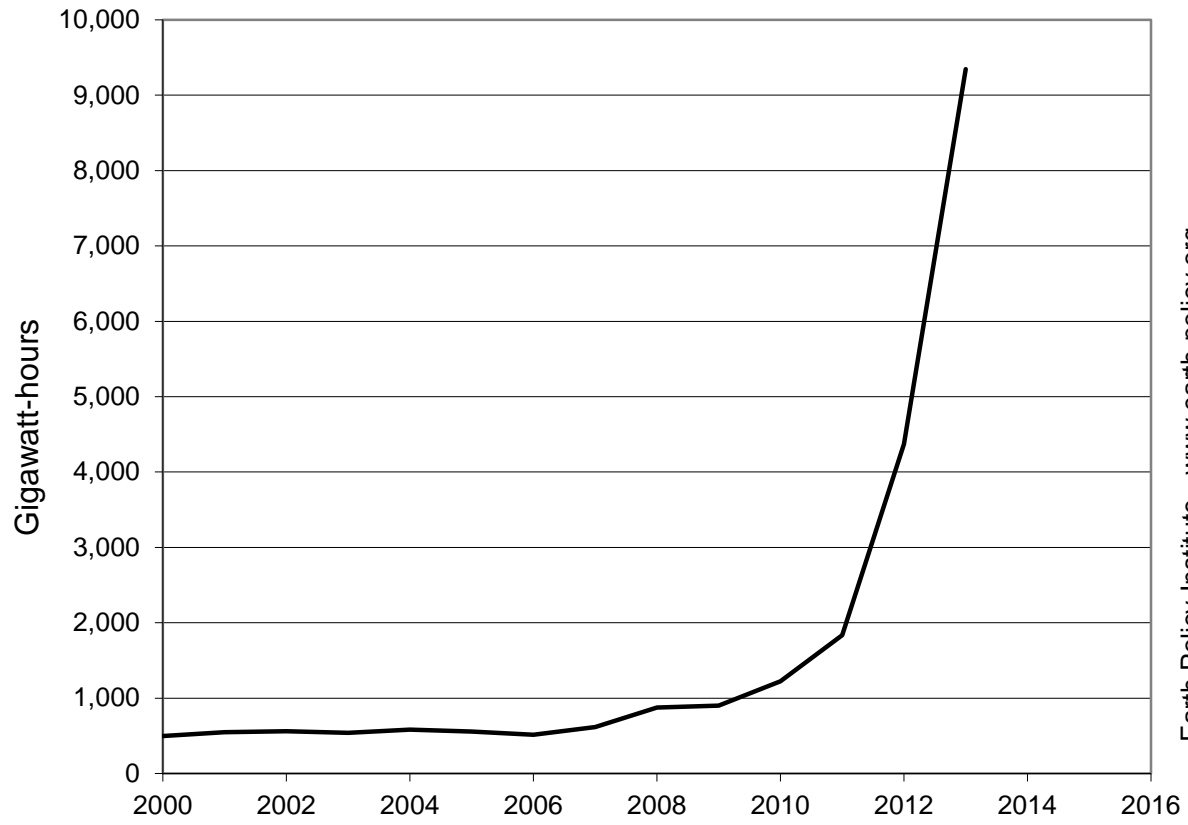
Earth Policy Institute - www.earth-policy.org

Solar-generated Electricity in the United States, 2000-2013

<u>Year</u>	<u>United States</u>
	Gigawatt-hours
2000	498
2001	548
2002	560
2003	539
2004	581
2005	556
2006	513
2007	618
2008	873
2009	900
2010	1,224
2011	1,836
2012	4,370
<u>2013</u>	<u>9,346</u>

Source: BP, *Statistical Review of World Energy June 2014* (London: 2014).

Solar-generated Electricity in the United States, 2000-2013



Source: BP

Earth Policy Institute - www.earth-policy.org

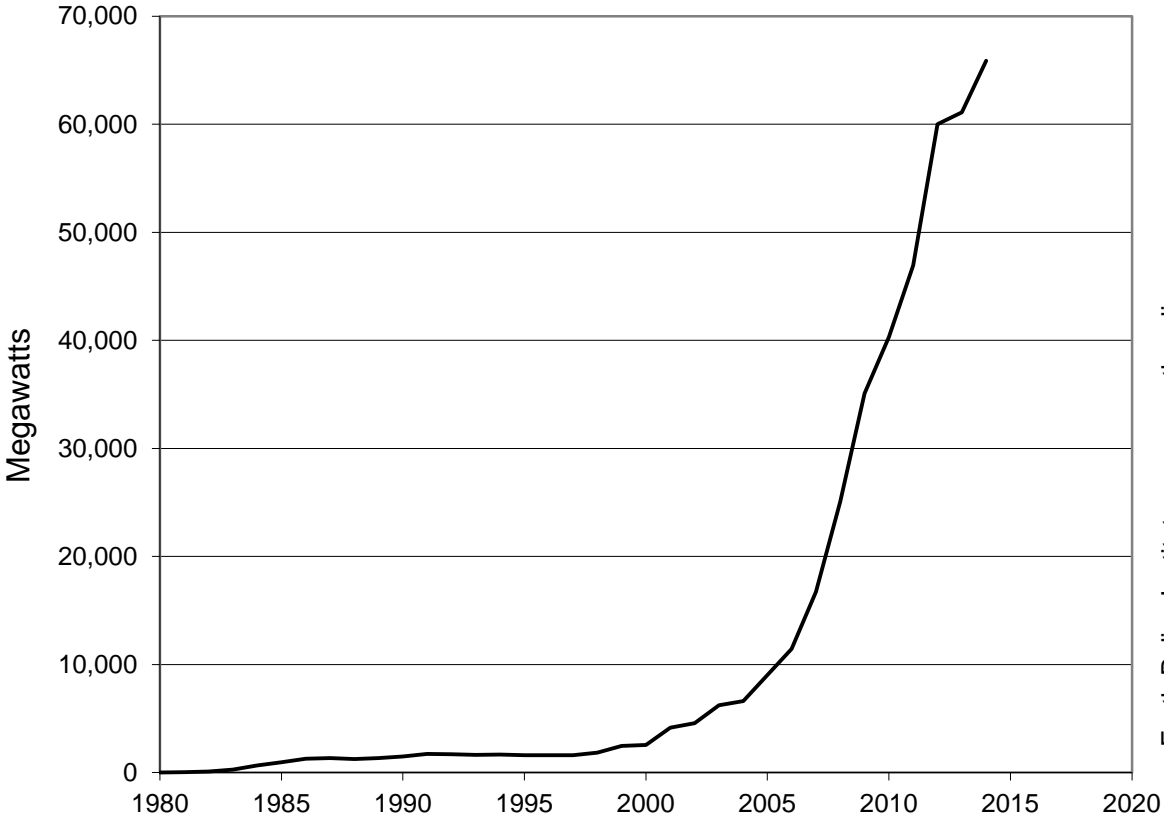
Cumulative Installed Wind Power Capacity and Net Annual Addition in the United States, 1980-2014

Year	Cumulative Installed Capacity	Net Annual Addition*
Megawatts		
1980	8	
1981	18	10
1982	84	66
1983	254	170
1984	653	399
1985	945	292
1986	1,265	320
1987	1,333	68
1988	1,231	-102
1989	1,332	101
1990	1,484	152
1991	1,709	225
1992	1,680	-29
1993	1,635	-45
1994	1,663	28
1995	1,612	-51
1996	1,614	2
1997	1,611	-3
1998	1,837	226
1999	2,472	635
2000	2,539	67
2001	4,147	1,608
2002	4,557	410
2003	6,222	1,665
2004	6,619	397
2005	8,993	2,374
2006	11,450	2,457
2007	16,702	5,252
2008	25,065	8,363
2009	35,068	10,003
2010	40,283	5,215
2011	46,930	6,647
2012	60,012	13,082
2013	61,110	1,098
2014	65,879	4,769

* Net annual addition equals new installations minus retirements.

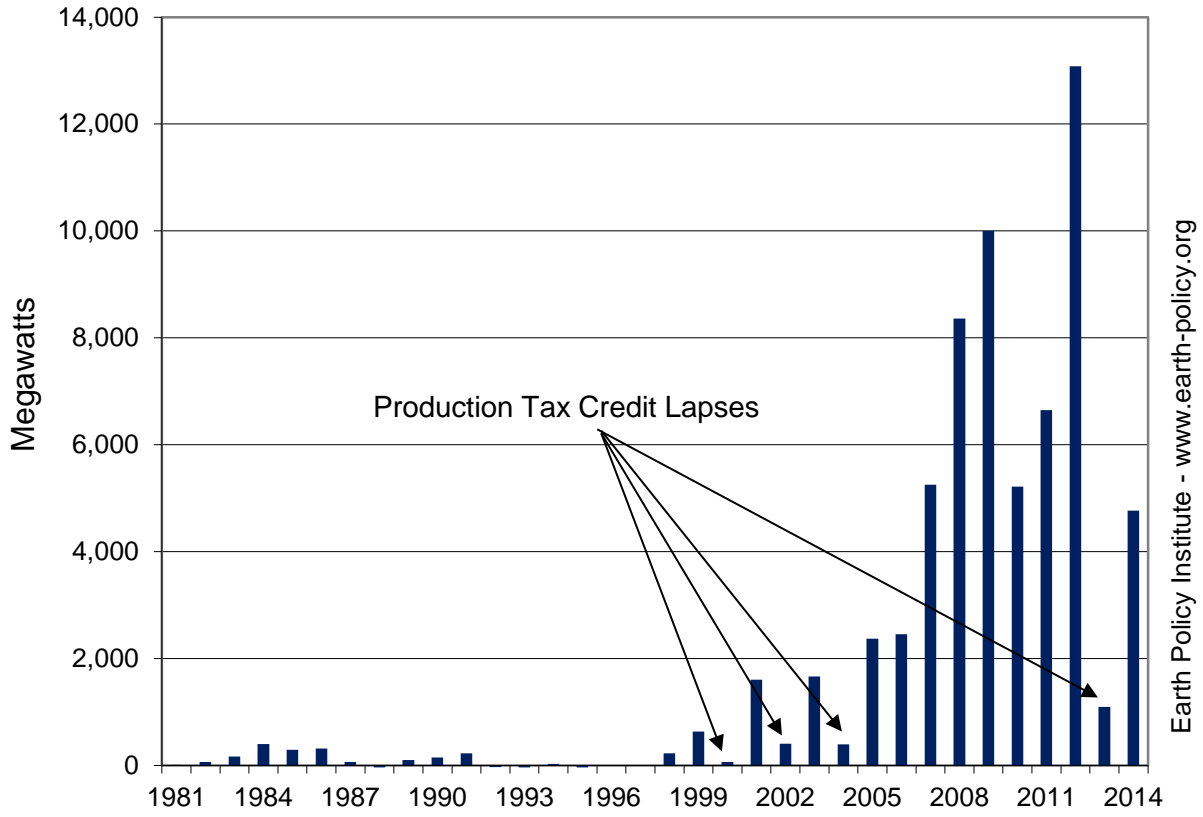
Source: Compiled by Earth Policy Institute with 1980-1998 data from Worldwatch Institute, *Signposts 2001*, CD-ROM (Washington, DC: 2001); 1999-2000 from U.S. Department of Energy, Office of Energy Efficiency and Renewable Energy, "Wind Powering America: Installed Wind Capacity," at www.windpoweringamerica.gov/wind_installed_capacity.asp, updated 8 November 2012; 2001-2014 from American Wind Energy Association, *U.S. Wind Industry Fourth Quarter 2014 Market Report* (Washington, DC: 28 January 2015), p. 4.

Cumulative Installed Wind Power Capacity in the United States, 1980-2014



Source: EPI from Worldwatch, DOE, AWEA

Net Annual Installed Wind Power Capacity Additions in the United States, 1981-2014



Source: EPI from Worldwatch, DOE, AWEA

U.S. Cumulative Installed Wind Power Capacity in Top 10 States, 2014

State	Cumulative Installed Capacity Megawatts
Texas	14,098
California	5,917
Iowa	5,688
Oklahoma	3,782
Illinois	3,568
Oregon	3,153
Washington	3,075
Minnesota	3,035
Kansas	2,967
Colorado	2,593

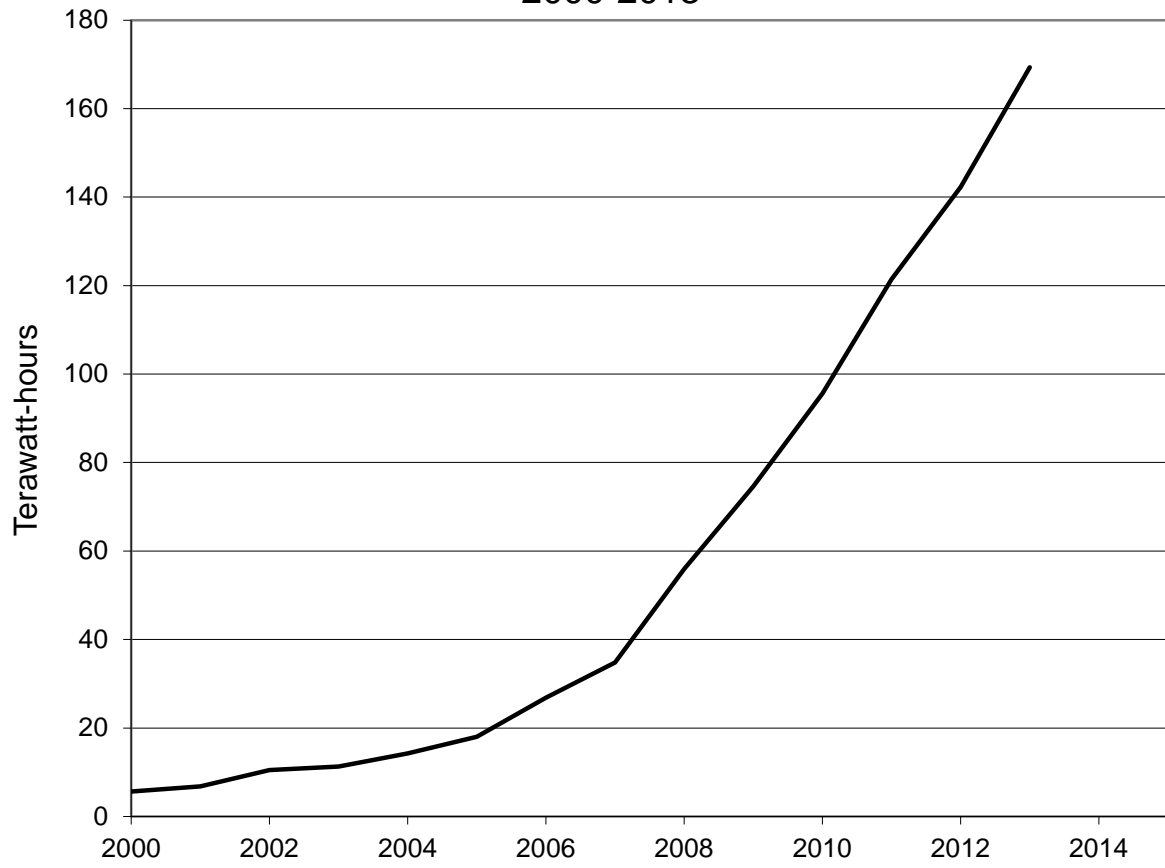
Source: American Wind Energy Association, *U.S. Wind Industry Fourth Quarter 2014 Market Report* (Washington, DC: 28 January 2015), p. 5.

Wind-generated Electricity in the United States, 2000-2013

Year	Wind-Generated Electricity Terawatt-hours
2000	6
2001	7
2002	10
2003	11
2004	14
2005	18
2006	27
2007	35
2008	56
2009	75
2010	96
2011	121
2012	142
2013	169

Source: BP, *Statistical Review of World Energy June 2014* (London: 2014).

Wind-generated Electricity in the United States, 2000-2013



Source: BP

Earth Policy Institute - www.earth-policy.org

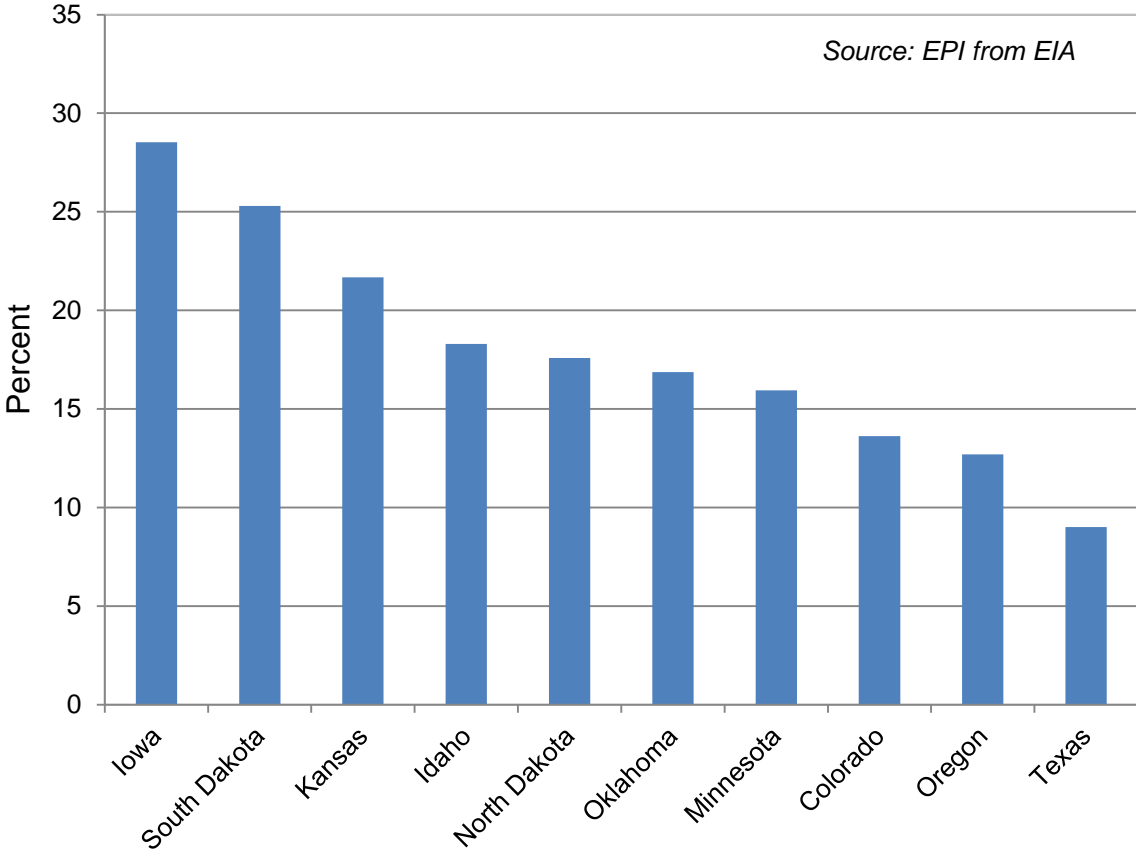
Wind Share of Net Electricity Generation by U.S. State, 2013 and 2014

State	Net Generation of Electricity from Wind	
	2013	2014
	Percent	
Iowa	27.5	28.5
South Dakota	26.6	25.3
Kansas	19.5	21.7
Idaho	16.2	18.3
North Dakota	15.8	17.6
Oklahoma	15.2	16.9
Minnesota	16.1	15.9
Colorado	13.6	13.6
Oregon	12.4	12.7
Texas	8.3	9.0
Wyoming	8.4	8.9
Maine	7.5	8.3
New Mexico	6.1	7.0
California	6.4	7.0
Nebraska	4.9	6.9
Montana	6.3	6.5
Washington	6.1	6.3
Hawaii	4.9	5.9
Illinois	4.7	5.0
Vermont	3.4	4.4
Michigan	2.7	3.7
Indiana	3.2	3.0
New York	2.6	2.9
Wisconsin	2.4	2.6
Alaska	2.2	2.5
New Hampshire	2.0	2.1
West Virginia	1.8	1.8
Pennsylvania	1.5	1.6
Utah	1.3	1.5
Missouri	1.3	1.3
Ohio	0.8	0.9
Maryland	0.9	0.9
Nevada	0.7	0.8
Massachusetts	0.6	0.7
Arizona	0.4	0.4
Tennessee	0.1	0.1
New Jersey	0.0	0.0
U.S. Total	4.1	4.4

Note: Net electricity generation refers to a generating facility's total output minus the electricity used to operate the facility.

Source: Calculated by Earth Policy Institute from "State by Sector, Year-to-Date" and "Wind by State by Sector, Year-to-Date," Tables 1.6.B and 1.17.B in U.S. Department of Energy, Energy Information Administration, "Electric Power Monthly," at www.eia.gov/electricity/monthly, updated 4 March 2015.

Wind Share of Net Electricity Generation in Top 10 U.S. States, 2014



Cumulative Installed Geothermal Electricity-Generating Capacity in the United States, 1990-2013

<u>Year</u>	<u>Cumulative Installed Capacity Megawatts</u>
1990	2,775
1995	2,817
2000	2,746
2005	2,811
2010	3,226
<u>2013</u>	<u>3,442</u>

Source: Compiled by Earth Policy Institute BP, *Statistical Review of World Energy June 2014* (London: 2014).

U.S. Cumulative Installed Geothermal Electricity-Generating Capacity by State, 2013

<u>State</u>	<u>Cumulative Installed Capacity Megawatts</u>
California	2,711
Nevada	566
Utah	73
Hawaii	38
Oregon	33
Idaho	16
New Mexico	4
Alaska	1
<u>Total</u>	<u>3,442</u>

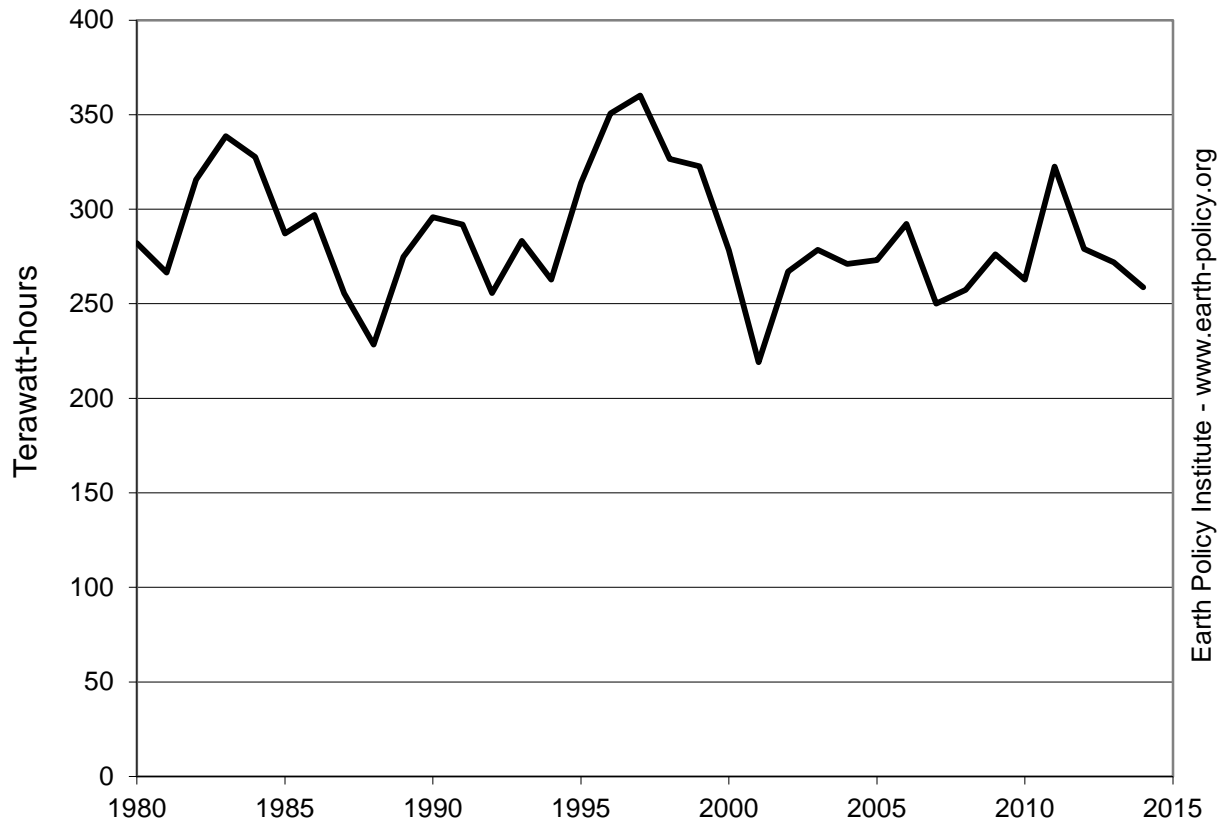
Source: Benjamin Matek, *Annual Geothermal Power Production and Development Report: April 2014* (Washington, DC: Geothermal Energy Association, April 2014), p. 16.

Hydroelectric Generation in the United States, 1980-2014

Year	Generation Terawatt-hours	Share of Electricity Percent
1980	282	8.7
1981	267	8.7
1982	316	10.1
1983	339	9.9
1984	328	10.6
1985	287	9.4
1986	297	9.9
1987	255	9.8
1988	228	9.2
1989	275	9.8
1990	296	9.6
1991	292	9.0
1992	256	7.0
1993	283	8.5
1994	263	8.4
1995	314	8.0
1996	351	7.4
1997	360	8.6
1998	327	8.9
1999	323	8.5
2000	278	7.2
2001	219	7.6
2002	267	6.3
2003	279	5.6
2004	271	6.6
2005	273	6.9
2006	292	6.8
2007	250	5.9
2008	257	6.6
2009	276	6.3
2010	263	7.2
2011	323	8.2
2012	279	8.5
2013	272	7.7
2014	259	6.3

Source: Compiled by Earth Policy Institute from BP, *Statistical Review of World Energy June 2014* (London: 2014) with electricity generation 1980-1984 from U.S. Department of Energy (DOE), Energy Information Administration (EIA), *International Energy Statistics*, electronic database, at www.eia.gov/countries/data.cfm, viewed 12 June 2014 with 2014 data from "Energy Source: Total - All Sectors" and "Renewable Sources: Total - All Sectors," Tables 1.1 and 1.1.A. in DOE, EIA, "Electric Power Monthly," at www.eia.gov/electricity/monthly, updated 4 March 2014.

Hydroelectric Generation in the United States, 1980-2014



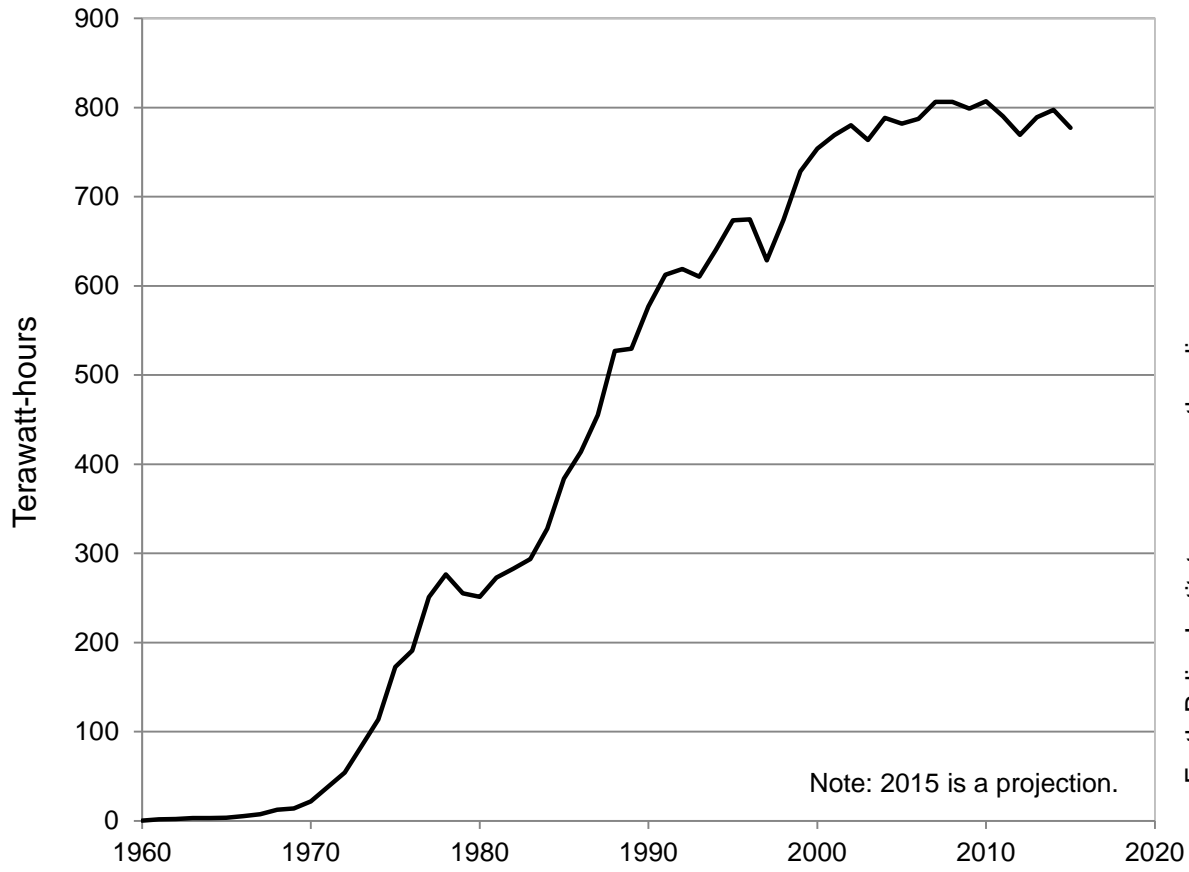
Source: BP, EIA

U.S. Net Electricity Generation from Nuclear Power, 1960-2014, with Projection to 2015

Year	Generation Terawatt-hours
1960	1
1961	2
1962	2
1963	3
1964	3
1965	4
1966	6
1967	8
1968	13
1969	14
1970	22
1971	38
1972	54
1973	83
1974	114
1975	173
1976	191
1977	251
1978	276
1979	255
1980	251
1981	273
1982	283
1983	294
1984	328
1985	384
1986	414
1987	455
1988	527
1989	529
1990	577
1991	613
1992	619
1993	610
1994	640
1995	673
1996	675
1997	629
1998	674
1999	728
2000	754
2001	769
2002	780
2003	764
2004	789
2005	782
2006	787
2007	806
2008	806
2009	799
2010	807
2011	790
2012	769
2013	789
2014	797
2015	777

Source: Compiled by Earth Policy Institute with 1960-2013 from "Electricity Net Generation: Total (All Sectors)," Table 7.2a in U.S. Department of Energy (DOE), Energy Information Administration (EIA), "Monthly Energy Review," at www.eia.gov/totalenergy/data/monthly, updated 24 February 2015; and with 2014-2015 from DOE, EIA, "Short Term Energy Outlook: Electricity," at www.eia.gov/forecasts/steo/report/electricity.cfm, updated 10 February 2015.

U.S. Net Electricity Generation from Nuclear Power, 1960-2015



Note: 2015 is a projection.

Source: EPI from EIA

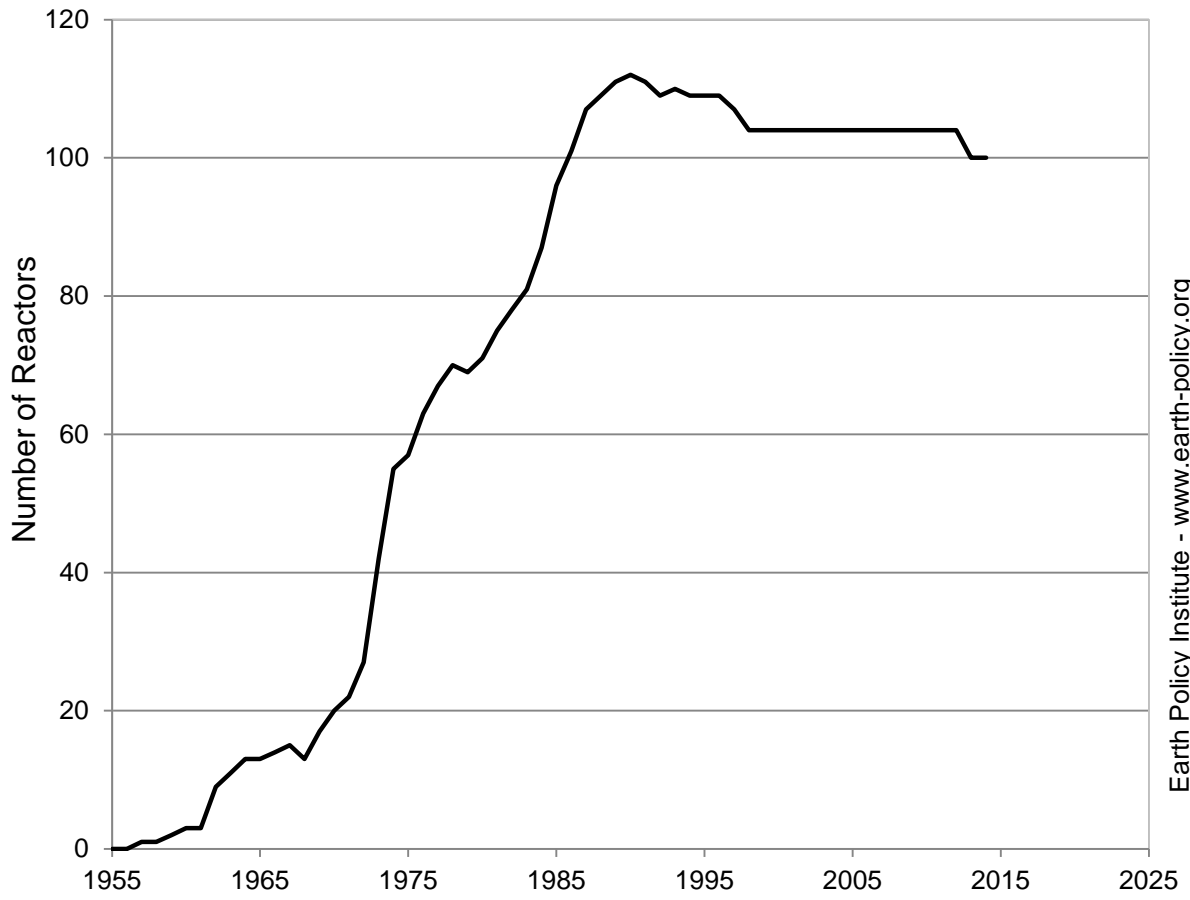
U.S. Nuclear Power Reactors in Operation, 1955-2014

Year	Number of Reactors
1955	0
1956	0
1957	1
1958	1
1959	2
1960	3
1961	3
1962	9
1963	11
1964	13
1965	13
1966	14
1967	15
1968	13
1969	17
1970	20
1971	22
1972	27
1973	42
1974	55
1975	57
1976	63
1977	67
1978	70
1979	69
1980	71
1981	75
1982	78
1983	81
1984	87
1985	96
1986	101
1987	107
1988	109
1989	111
1990	112
1991	111
1992	109
1993	110
1994	109
1995	109
1996	109
1997	107
1998	104
1999	104
2000	104
2001	104
2002	104
2003	104
2004	104
2005	104
2006	104
2007	104
2008	104
2009	104
2010	104
2011	104
2012	104
2013	100
2014	100

Note: The Vermont Yankee reactor, counted as operational in the 2014 total, was permanently shut down on December 29, 2014, leaving 99 operating reactors as of early 2015.

Source: Compiled by Earth Policy Institute from "Nuclear Energy Overview," Table 8.1. in U.S. Department of Energy, Energy Information Administration, "Monthly Energy Review," at www.eia.gov/totalenergy/data/monthly, updated 28 January 2015.

U.S. Nuclear Power Reactors in Operation, 1955-2014



Source: EPI from EIA

Earth Policy Institute - www.earth-policy.org

U.S. Nuclear Power Reactors Permanently Shut Down

Reactor Name	Location	First Grid Connection	Shut-Down Date	Age at Shut-Down
GE Vallecitos	Sunol, CA	10/19/1957	12/9/1963	6
Hallam	Hallam, NE	9/1/1963	9/1/1964	1
Piqua	Piqua, OH	7/1/1963	1/1/1966	2
CVTR	Parr, SC	12/18/1963	1/1/1967	3
Pathfinder	Sioux Falls, SD	7/25/1966	9/16/1967	1
Elk River	Elk River, MN	8/24/1963	2/1/1968	4
GE Bonus	Punta Higuera, PR	8/14/1964	6/1/1968	4
Saxton	Saxton, PA	3/1/1967	5/1/1972	5
Fermi 1	Newport, MI	8/5/1966	9/22/1972	6
Indian Point 1	Buchanan, NY	9/16/1962	10/31/1974	12
Peach Bottom 1	Delta, PA	1/27/1967	10/31/1974	8
Humboldt Bay 3	Eureka, CA	4/18/1963	7/2/1976	13
Dresden 1	Morris, IL	4/15/1960	10/31/1978	19
Three Mile Island 2	Middletown, PA	4/21/1978	3/28/1979	1
Shippingport*	Shippingport, PA	12/2/1957	10/1/1982	25
La Crosse	Genoa, WI	4/26/1968	4/30/1987	19
Rancho Seco	Herald, CA	10/13/1974	6/7/1989	15
Shoreham	Wading River, NY	8/1/1986	6/28/1989	3
Fort St. Vrain	Platteville, CO	12/11/1976	8/18/1989	13
Yankee-Rowe	Rowe, MA	11/10/1960	10/1/1991	31
Trojan	Rainier, OR	12/23/1975	11/9/1992	17
San Onofre 1	San Clemente, CA	7/16/1967	11/30/1992	25
Zion 2	Zion, IL	12/26/1973	9/19/1996	23
Haddam Neck	Meriden, CT	8/7/1967	12/5/1996	29
Maine Yankee	Wiscasset, ME	11/8/1972	12/6/1996	24
Zion 1	Zion, IL	6/28/1973	2/21/1997	24
Big Rock Point	Charlevoix, MI	12/8/1962	8/29/1997	35
Millstone 1	Waterford, CT	11/29/1970	7/21/1998	28
Crystal River 3	Crystal River, FL	1/30/1977	2/20/2013	36
Kewaunee Power Station	Kewaunee, WI	4/8/1974	5/7/2013	39
San Onofre 2	San Clemente, CA	9/20/1982	6/12/2013	31
San Onofre 3	San Clemente, CA	9/25/1983	6/12/2013	30
Vermont Yankee	Vernon, VT	9/20/1972	12/29/2014	42

* Because discussions on Shippingport's construction and funding began in 1953, prior to the 1954 Atomic Energy Act that first required a licensing process for nuclear facilities, this reactor was not formally licensed for operation.

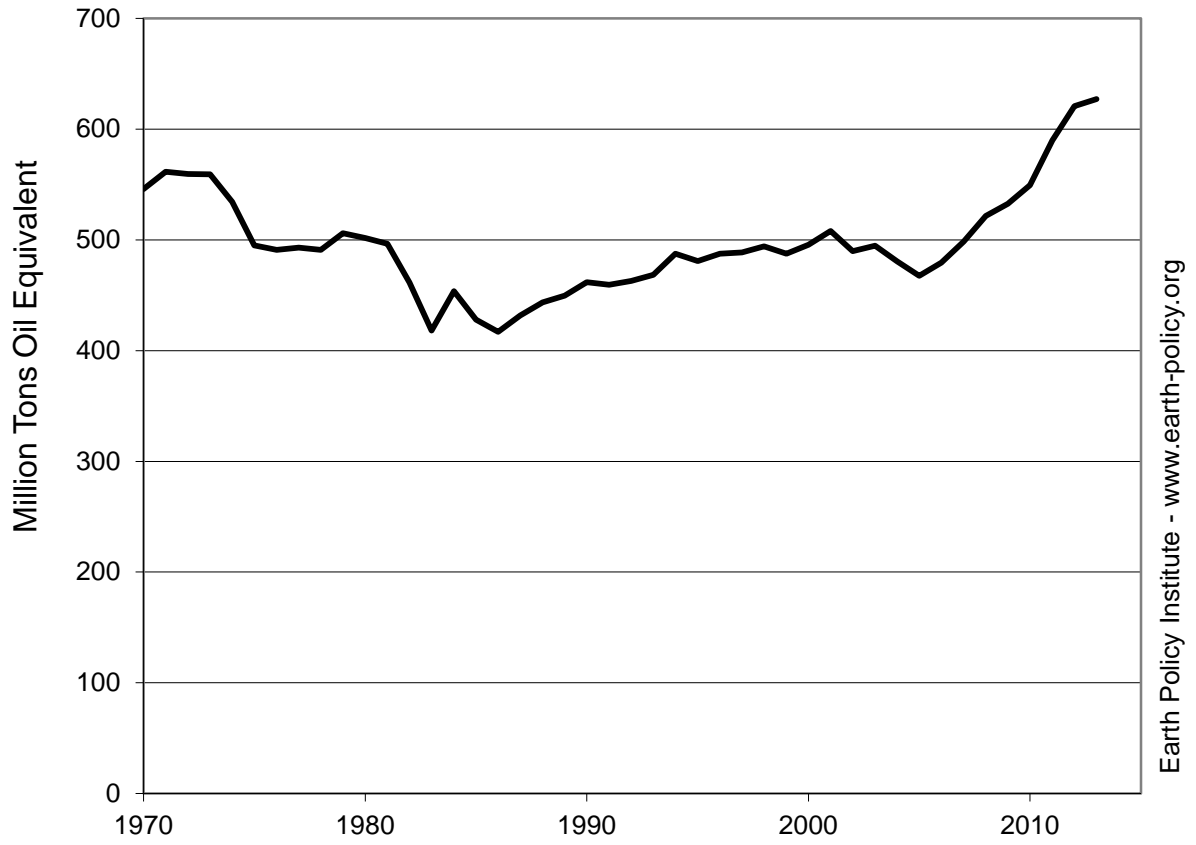
Source: Compiled by Earth Policy Institute (EPI) with grid connection dates and Vermont Yankee shut-down date from International Atomic Energy Agency, "United States of America," at www.iaea.org/PRIS/CountryStatistics/CountryDetails.aspx?current=US, updated 9 February 2015; and with all other shut-down dates from "U.S. Commercial Nuclear Power Reactors Formerly Licensed to Operate," Appendix C in U.S. Nuclear Regulatory Commission (NRC), "Information Digest, 2014–2015 (NUREG-1350, Volume 26)," at www.nrc.gov/reading-rm/doc-collections/nuregs/staff/sr1350, updated 12 November 2014; license information for Shippingport reactor from Ivonne L. Couret, NRC, e-mail to J. Matthew Roney, EPI, 9 September 2013.

Natural Gas Production in the United States, 1970-2013

<u>Year</u>	<u>Production</u>
	Million Tons Oil Equivalent
1970	546
1971	561
1972	560
1973	559
1974	534
1975	495
1976	491
1977	493
1978	491
1979	506
1980	502
1981	496
1982	462
1983	418
1984	454
1985	428
1986	417
1987	432
1988	443
1989	450
1990	462
1991	459
1992	463
1993	468
1994	488
1995	481
1996	487
1997	489
1998	494
1999	487
2000	495
2001	508
2002	490
2003	495
2004	481
2005	468
2006	479
2007	499
2008	522
2009	533
2010	549
2011	590
2012	621
2013	627

Source: BP, *Statistical Review of World Energy June 2014* (London: 2014).

Natural Gas Production in the United States, 1970-2013



Source: BP

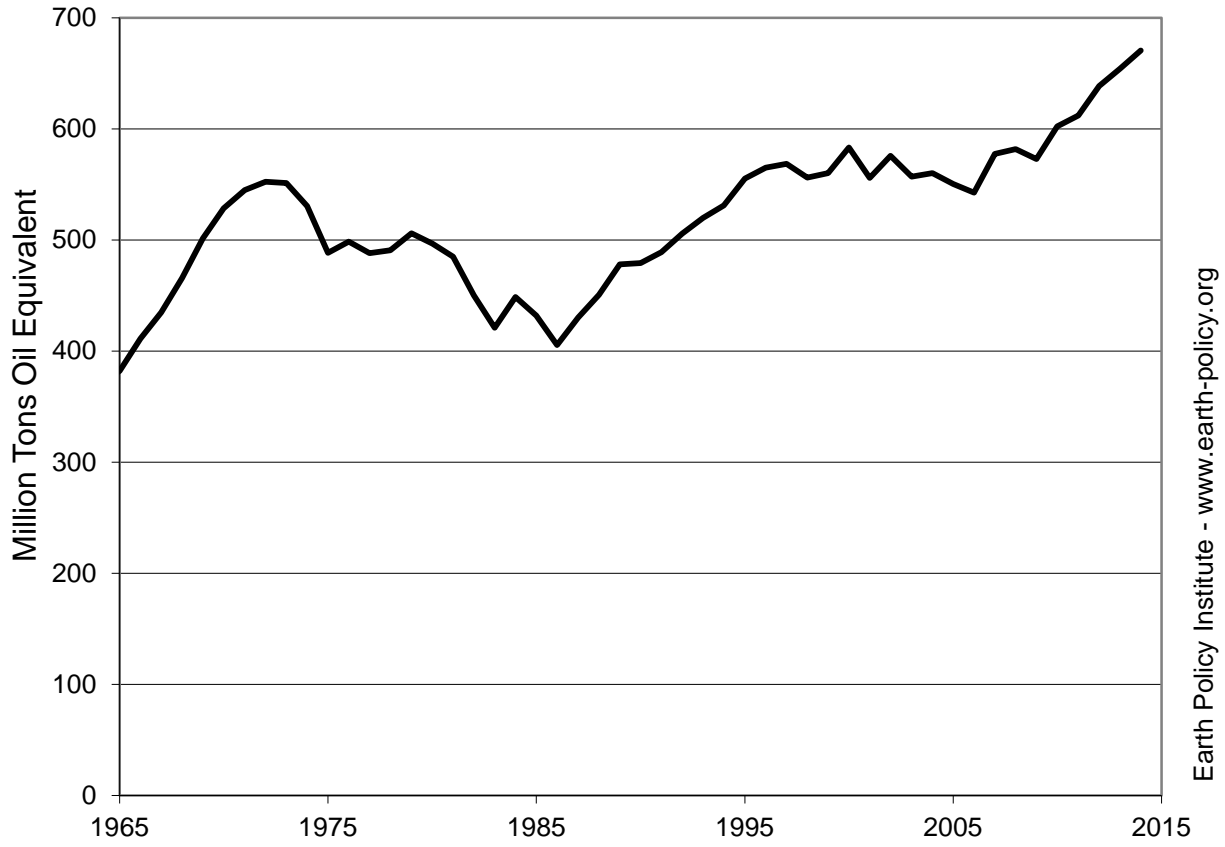
Earth Policy Institute - www.earth-policy.org

Natural Gas Consumption in the United States, 1950-2014

Year	Consumption Million Tons Oil Equivalent
1950	144
1951	170
1952	182
1953	191
1954	201
1955	217
1956	232
1957	246
1958	258
1959	283
1960	299
1961	312
1962	332
1963	349
1964	370
1965	382
1966	411
1967	435
1968	466
1969	501
1970	528
1971	545
1972	553
1973	551
1974	531
1975	488
1976	499
1977	488
1978	491
1979	506
1980	497
1981	485
1982	450
1983	421
1984	449
1985	432
1986	406
1987	430
1988	451
1989	478
1990	479
1991	489
1992	506
1993	520
1994	531
1995	555
1996	565
1997	568
1998	556
1999	560
2000	583
2001	556
2002	576
2003	557
2004	560
2005	550
2006	542
2007	578
2008	582
2009	573
2010	602
2011	612
2012	638
2013	654
2014	670

Source: Compiled by Earth Policy Institute with consumption data from "Natural Gas Consumption by Sector," Table 4.3 in U.S. Department of Energy, Energy Information Administration, "Monthly Energy Review," at www.eia.gov/totalenergy/data/monthly, updated 26 March 2015; billion cubic feet converted to million tons of oil equivalent using BP, "Conversion Factors, at www.bp.com/en/global/corporate/about-bp/energy-economics/statistical-review-of-world-energy/using-the-review/Conversionfactors.html, viewed 2 April 2015.

Natural Gas Consumption in the United States, 1950-2014



Source: EIA

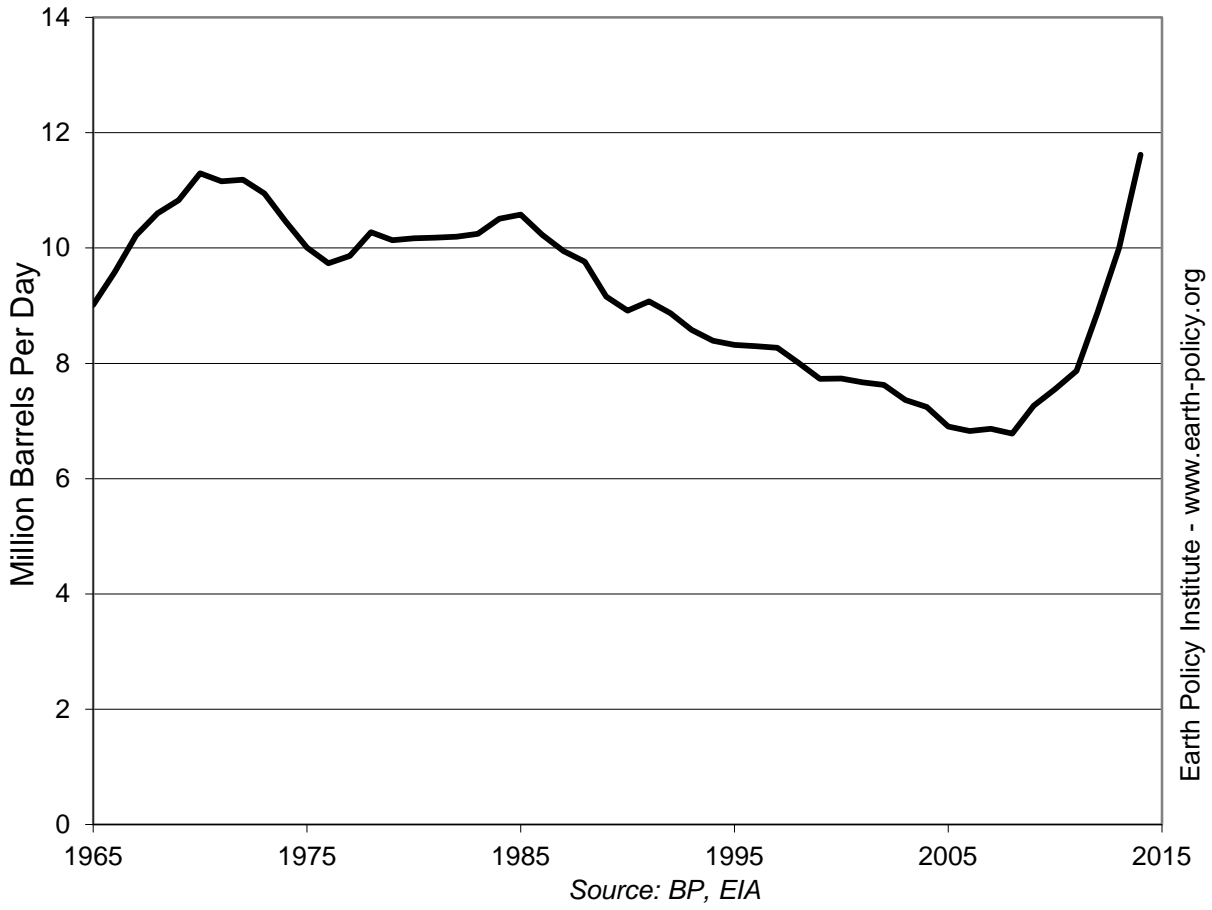
Earth Policy Institute - www.earth-policy.org

Oil Production in the United States, 1965-2014

Year	Production
Million Barrels Per Day	
1965	9.0
1966	9.6
1967	10.2
1968	10.6
1969	10.8
1970	11.3
1971	11.2
1972	11.2
1973	10.9
1974	10.5
1975	10.0
1976	9.7
1977	9.9
1978	10.3
1979	10.1
1980	10.2
1981	10.2
1982	10.2
1983	10.2
1984	10.5
1985	10.6
1986	10.2
1987	9.9
1988	9.8
1989	9.2
1990	8.9
1991	9.1
1992	8.9
1993	8.6
1994	8.4
1995	8.3
1996	8.3
1997	8.3
1998	8.0
1999	7.7
2000	7.7
2001	7.7
2002	7.6
2003	7.4
2004	7.2
2005	6.9
2006	6.8
2007	6.9
2008	6.8
2009	7.3
2010	7.6
2011	7.9
2012	8.9
2013	10.0
2014	11.6

Source: Compiled by Earth Policy Institute from BP, *Statistical Review of World Energy June 2014* (London: 2014) with 2014 data from "Petroleum Overview" Table 3.1 in U.S. Department of Energy, Energy Information Administration, "Monthly Energy Review," at www.eia.gov/totalenergy/data/monthly, updated 26 March 2015.

Oil Production in the United States, 1965-2014

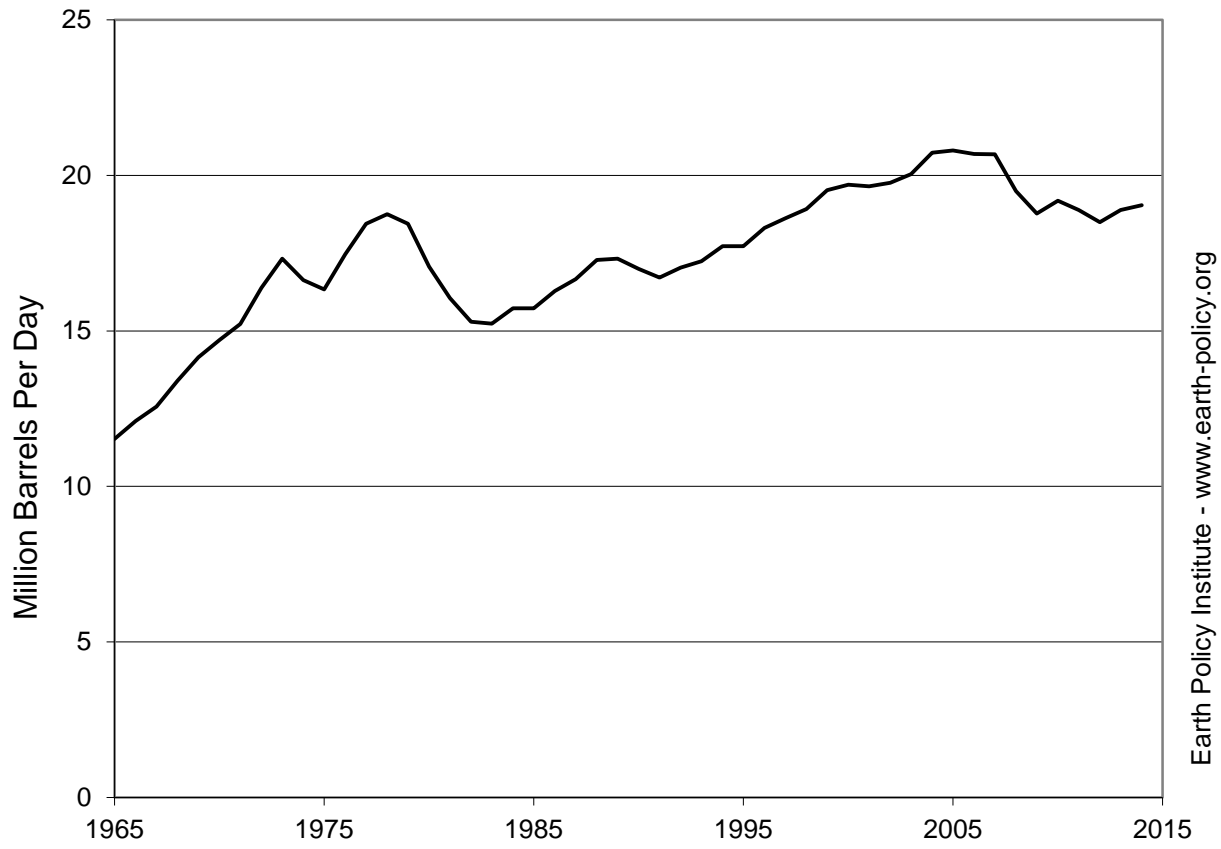


Oil Consumption in the United States, 1965-2014

<u>Year</u>	<u>Consumption</u> Million Barrels Per Day
1965	11.5
1966	12.1
1967	12.6
1968	13.4
1969	14.2
1970	14.7
1971	15.2
1972	16.4
1973	17.3
1974	16.6
1975	16.3
1976	17.5
1977	18.4
1978	18.8
1979	18.4
1980	17.1
1981	16.1
1982	15.3
1983	15.2
1984	15.7
1985	15.7
1986	16.3
1987	16.7
1988	17.3
1989	17.3
1990	17.0
1991	16.7
1992	17.0
1993	17.2
1994	17.7
1995	17.7
1996	18.3
1997	18.6
1998	18.9
1999	19.5
2000	19.7
2001	19.6
2002	19.8
2003	20.0
2004	20.7
2005	20.8
2006	20.7
2007	20.7
2008	19.5
2009	18.8
2010	19.2
2011	18.9
2012	18.5
2013	18.9
2014	19.0

Source: Compiled by Earth Policy Institute from BP, *Statistical Review of World Energy June 2014* (London: 2014); with 2014 data from "Petroleum Consumption: Residential and Commercial Sectors," "Petroleum Consumption: Transportation and Electric Power Sectors," and "Petroleum Consumption: Industrial Sector," Tables 3.7a, 3.7c, and 3.6b in U.S. Department of Energy, Energy Information Administration, "Monthly Energy Review," at www.eia.gov/totalenergy/data/monthly, updated 26 March 2015.

Oil Consumption in the United States, 1965-2014



Source: BP, EIA

Earth Policy Institute - www.earth-policy.org

Bicycle Sales in the United States, 1981-2013

Year	Wheel sizes		All
	Under 20 inches	20 inches and over	
Million			
1981	n.a.	8.9	n.a.
1982	n.a.	6.8	n.a.
1983	n.a.	9.0	n.a.
1984	n.a.	10.1	n.a.
1985	n.a.	11.4	n.a.
1986	n.a.	12.3	n.a.
1987	n.a.	12.6	n.a.
1988	n.a.	9.9	n.a.
1989	n.a.	10.7	n.a.
1990	n.a.	10.8	n.a.
1991	n.a.	11.6	n.a.
1992	3.7	11.6	15.3
1993	3.8	13.0	16.8
1994	4.2	12.5	16.7
1995	4.1	12.0	16.1
1996	4.5	10.9	15.4
1997	4.2	11.0	15.2
1998	4.7	11.1	15.8
1999	5.9	11.6	17.5
2000	9.0	11.9	20.9
2001	5.4	11.3	16.7
2002	5.9	13.6	19.5
2003	5.6	12.9	18.5
2004	5.3	13.0	18.3
2005	5.8	14.0	19.8
2006	5.5	12.7	18.2
2007	5.4	12.8	18.2
2008	5.1	13.4	18.5
2009	4.7	10.2	14.9
2010	6.3	13.5	19.8
2011	4.7	11.0	15.7
2012	5.7	13.0	18.7
2013	4.9	11.3	16.2

Note: "n.a." indicates data not available.

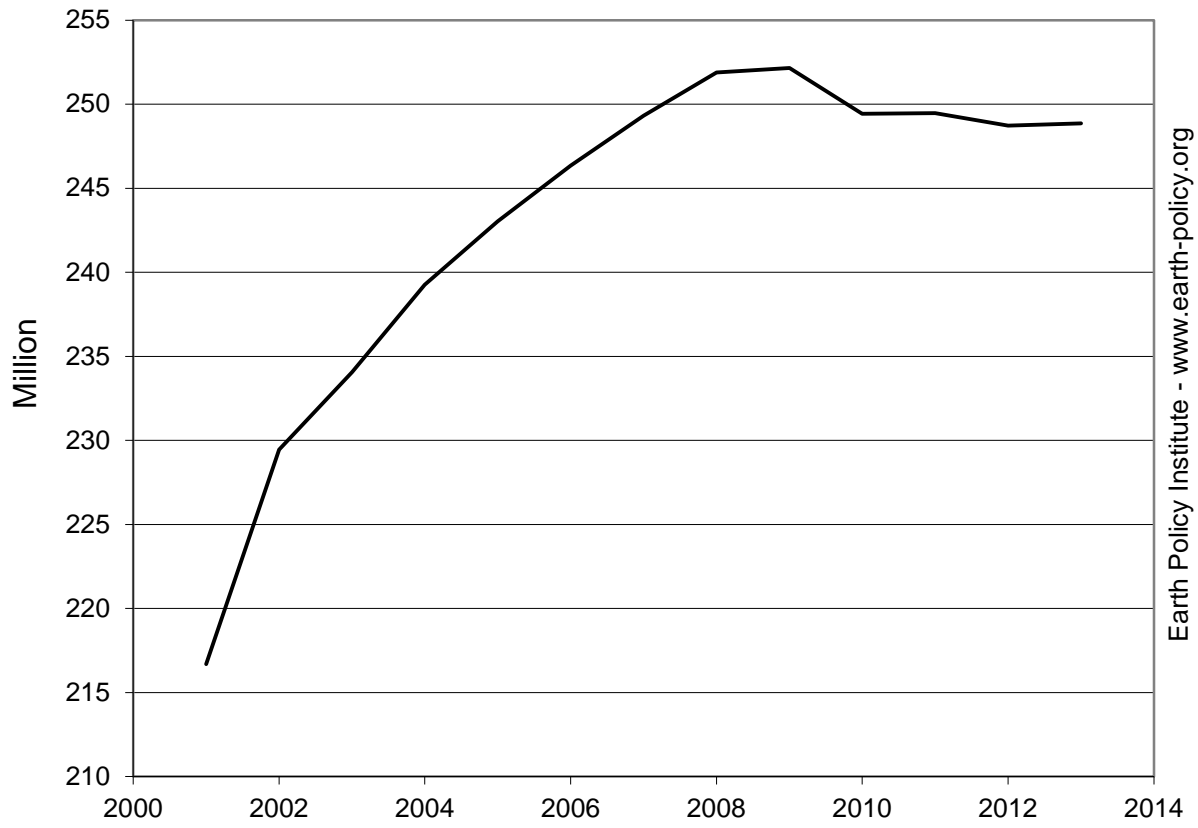
Source: "Bicycle Sales, 1981-2012," Table in Stacy C. Davis, Susan W. Diegel, and Robert G. Boundy, *Transportation Energy Data Book: Edition 33* (Oak Ridge, TN: Oak Ridge National Laboratory, Department of Energy, 2014) with 2013 data from National Bicycle Dealers Association, "A Look at the Bicycle Industry's Vital Statistics," at <http://nbd.com/articles/industry-overview-2013-pg34.htm>.

U.S. Vehicle Registrations and Scrappage, 2001-2013

Year	Total Vehicles in Use	New Vehicle Registrations Million	Scrappage	Scrappage Share of Registrations Percent
2001	217	17.5	14.1	80.7
2002	229	16.7	12.1	72.4
2003	234	16.6	12.4	74.9
2004	239	16.9	13.1	77.5
2005	243	16.8	13.5	80.3
2006	246	16.6	13.6	82.0
2007	249	16.0	13.4	83.9
2008	252	13.2	13.0	98.0
2009	252	10.4	13.1	126.3
2010	249	11.5	11.4	99.6
2011	249	12.7	13.4	106.0
2012	249	14.3	14.2	99.1
2013	249	15.4	11.6	75.6

Source: Compiled by Earth Policy Institute with 2001 from R.L. Polk & Company data cited in National Automobile Dealers Association, *NADA DATA 2012* (McLean, VA: 2012), p.16; 2002-2003 from R.L. Polk & Company data cited in National Automobile Dealers Association, *NADA DATA 2013* (McLean, VA: 2013), p.16; and 2004-2013 from IHS Automotive cited in National Automobile Dealers Association, *NADA DATA 2014* (McLean, VA: 2014), p.16.

Total Vehicles in Use in the United States, 2001-2013



Source: NADA

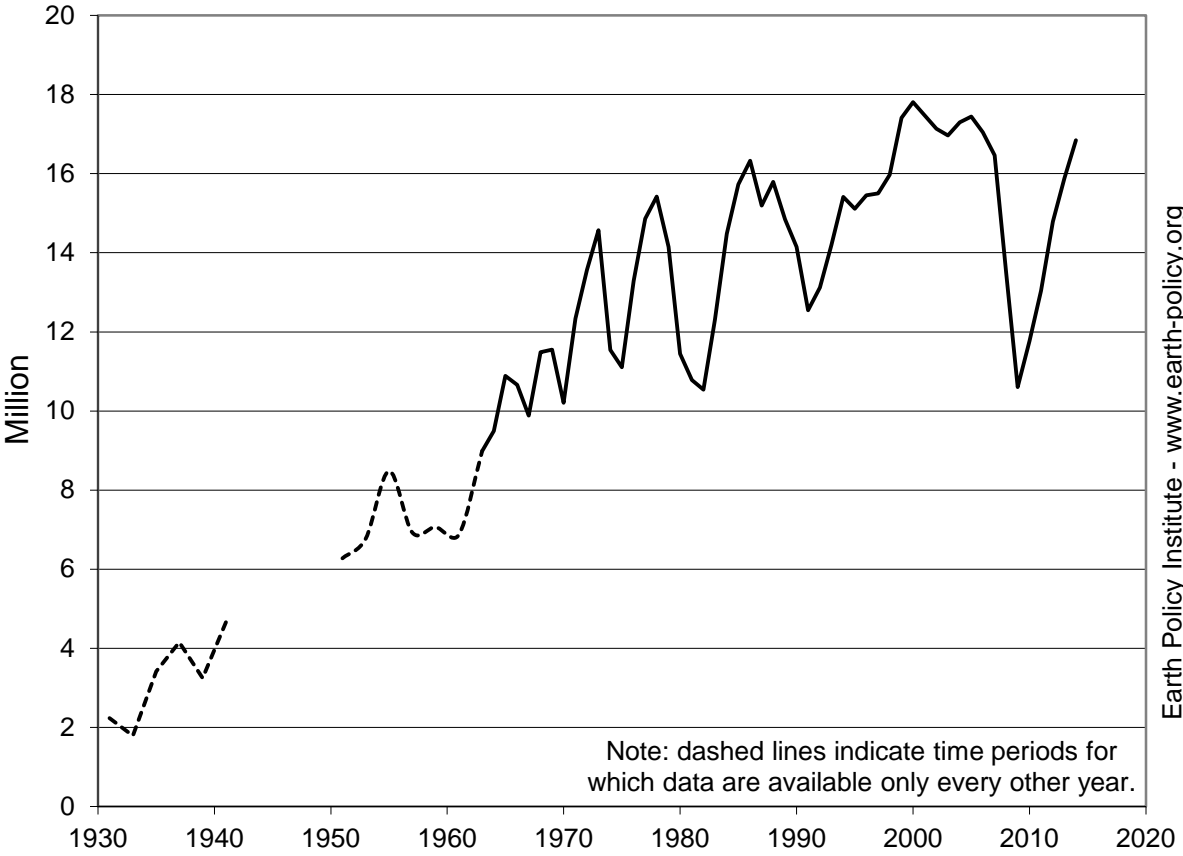
U.S. Vehicle Sales, 1931-2014

Year	Vehicle Sales Million
1931	2.2
1933	1.8
1935	3.4
1937	4.2
1939	3.2
1941	4.7
...	...
1951	6.3
1953	6.8
1955	8.5
1957	6.9
1959	7.1
1961	6.9
1963	9.0
1964	9.5
1965	10.9
1966	10.7
1967	9.9
1968	11.5
1969	11.6
1970	10.2
1971	12.3
1972	13.6
1973	14.6
1974	11.5
1975	11.1
1976	13.3
1977	14.9
1978	15.4
1979	14.2
1980	11.4
1981	10.8
1982	10.5
1983	12.3
1984	14.5
1985	15.7
1986	16.3
1987	15.2
1988	15.8
1989	14.8
1990	14.1
1991	12.5
1992	13.1
1993	14.2
1994	15.4
1995	15.1
1996	15.5
1997	15.5
1998	16.0
1999	17.4
2000	17.8
2001	17.5
2002	17.1
2003	17.0
2004	17.3
2005	17.4
2006	17.0
2007	16.5
2008	13.5
2009	10.6
2010	11.8
2011	13.0
2012	14.8
2013	15.9
2014	16.8

Note: 1942-1950 data unavailable.

Source: Ward's Automotive Group, "U.S. Car and Truck Sales, 1931-2014," at wardsauto.com/public-data, updated 19 January 2015.

U.S. Vehicle Sales, 1931-2014



Note: dashed lines indicate time periods for which data are available only every other year.

Source: Ward's

Monthly U.S. Sales of Leading Plug-in Electric Vehicles, December 2010 - February 2015

Month	Chevrolet Volt	Nissan LEAF	Toyota Prius Plug-in	Tesla Model S	Ford C-MAX Energi	Ford Fusion Energi	BMW i3	All U.S. PEVs
Total Sales								
Dec-10	326	19						345
Jan-11	321	87						408
Feb-11	281	67						348
Mar-11	608	298						906
Apr-11	493	573						1,066
May-11	481	1,142						1,631
Jun-11	561	1,708						2,269
Jul-11	125	931						1,057
Aug-11	302	1,362						1,665
Sep-11	723	1,031						1,754
Oct-11	1,108	849						1,974
Nov-11	1,139	672						1,912
Dec-11	1,529	954						2,741
Jan-12	603	676						1,427
Feb-12	1,023	478						1,662
Mar-12	2,289	579	911					4,161
Apr-12	1,462	370	1,654					3,891
May-12	1,680	510	1,086					3,378
Jun-12	1,760	535	695					3,318
Jul-12	1,849	395	688					3,016
Aug-12	2,831	685	1,047	71				4,715
Sep-12	2,851	984	1,652	150				5,809
Oct-12	2,961	1,579	1,889	250	144			7,032
Nov-12	1,519	1,539	1,766	800	1,259			7,156
Dec-12	2,633	1,489	1,361	900	971			7,669
Jan-13	1,140	650	874	1,000	338			4,376
Feb-13	1,626	653	693	1,400	334	119		5,405
Mar-13	1,478	2,236	786	1,950	494	295		7,632
Apr-13	1,306	1,937	599	2,100	411	364		7,138
May-13	1,607	2,138	678	2,000	450	416		7,754
Jun-13	2,698	2,225	584	1,800	455	390		8,742
Jul-13	1,788	1,864	817	1,550	433	407		7,442
Aug-13	3,351	2,420	1,791	1,700	621	600		11,363
Sep-13	1,766	1,953	1,152	1,100	758	750		8,127
Oct-13	2,022	2,002	2,095	1,300	1,092	1,087		10,100
Nov-13	1,920	2,003	1,100	1,400	941	870		8,833
Dec-13	2,392	2,529	919	1,700	827	791		9,790
Jan-14	918	1,252	803	1,300	471	533		5,905
Feb-14	1,210	1,425	1,041	1,400	552	779		7,045
Mar-14	1,478	2,507	1,452	1,300	610	899		9,172
Apr-14	1,548	2,088	1,741	1,400	525	743		8,905
May-14	1,684	3,117	2,692	1,400	782	1,342	336	12,453
Jun-14	1,777	2,347	1,571	1,400	988	1,939	358	11,493
Jul-14	2,020	3,019	1,371	1,400	831	1,226	363	11,433
Aug-14	2,511	3,186	818	1,200	1,050	1,222	1,025	12,403
Sep-14	1,394	2,881	353	1,300	677	640	1,022	9,340
Oct-14	1,439	2,589	479	1,300	644	686	1,159	9,553
Nov-14	1,336	2,687	451	1,450	644	752	816	9,785
Dec-14	1,490	3,102	492	1,900	659	789	1,013	11,286
Jan-15	542	1,070	401	1,300	395	426	670	6,090
Feb-15	693	1,198	397	1,400	498	603	1,089	7,024
Cumulative Sales, Dec-10 through Feb-15								
	74,592	74,590	38,899	40,621	18,854	18,668	7,851	299,899

Note: Plug-in electric vehicles (PEVs) include plug-in hybrid electric vehicles, but do not include Neighborhood Electric Vehicles, Low Speed Electric Vehicles, or two-wheeled electric vehicles. Only full-sized vehicles sold in the U.S. and capable of 60mph are listed.

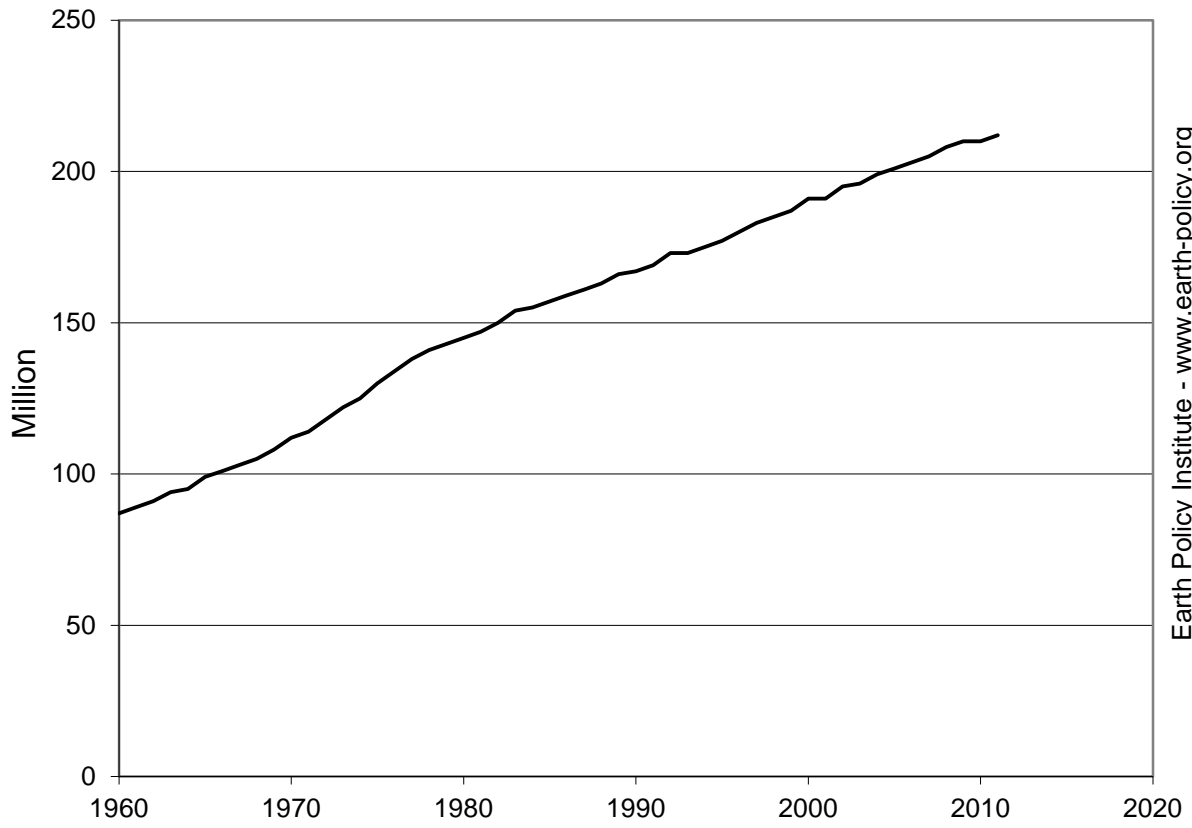
Source: Compiled by Earth Policy Institute from U.S. Department of Energy, Office of Energy Efficiency & Renewable Energy, *Alternative Fuels Data Center*, electronic database, at www.afdc.energy.gov/data, updated April 2014; Hybridcars.com, "Dashboard" (Monthly), at www.hybridcars.com/market-dashboard, viewed 27 March 2015.

Number of Licensed Drivers in the United States, 1960-2011

Year	Licensed Drivers Million
1960	87
1961	89
1962	91
1963	94
1964	95
1965	99
1966	101
1967	103
1968	105
1969	108
1970	112
1971	114
1972	118
1973	122
1974	125
1975	130
1976	134
1977	138
1978	141
1979	143
1980	145
1981	147
1982	150
1983	154
1984	155
1985	157
1986	159
1987	161
1988	163
1989	166
1990	167
1991	169
1992	173
1993	173
1994	175
1995	177
1996	180
1997	183
1998	185
1999	187
2000	191
2001	191
2002	195
2003	196
2004	199
2005	201
2006	203
2007	205
2008	208
2009	210
2010	210
2011	212

Source: Compiled by Earth Policy Institute from "Licensed Drivers, Vehicle Registrations, and Resident Population - Chart," Table DV-1C in U.S. Department of Transportation (DOT), Federal Highway Administration, "Highway Statistics 2011," at www.fhwa.dot.gov/policyinformation/statistics/2011/index.cfm, downloaded 13 January 2014.

Number of Drivers in the United States, 1960-2011



Source: DOT

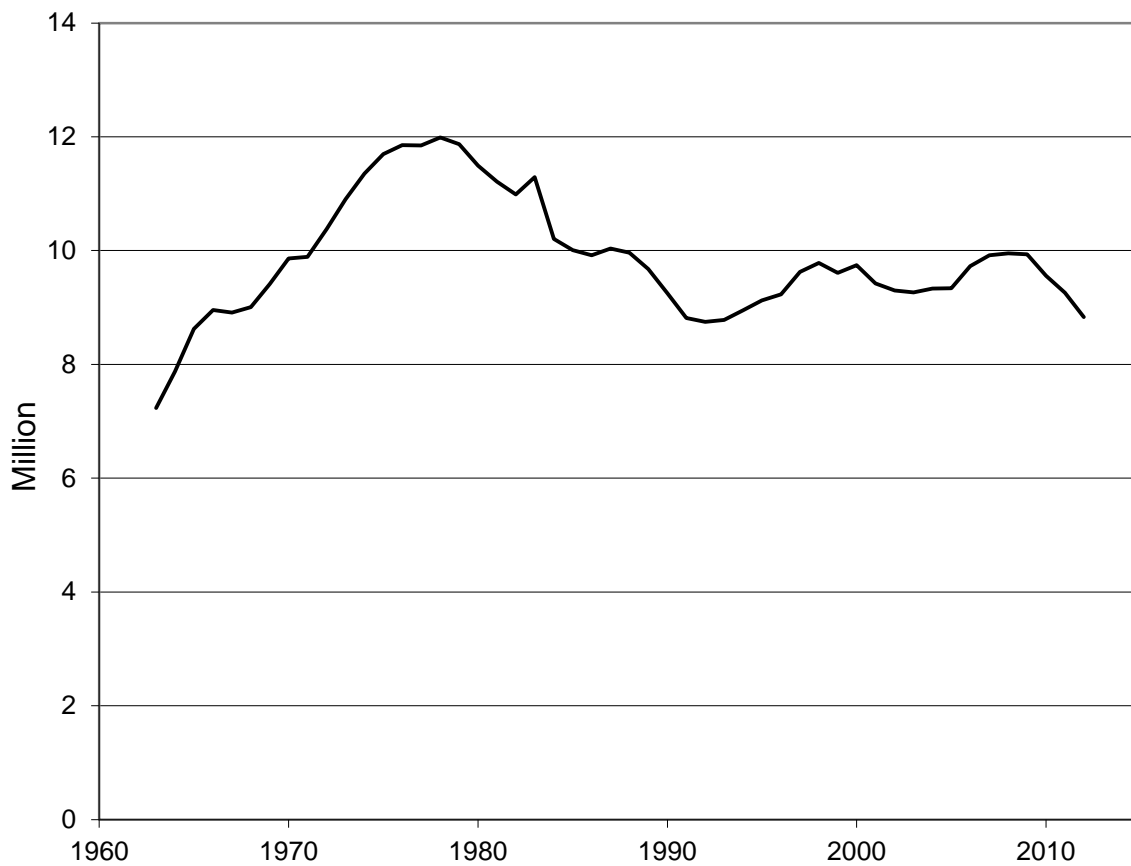
Earth Policy Institute - www.earth-policy.org

Teen Drivers in the United States, Total and Share of Teen Population, 1963-2012

Year	Number of Teen Drivers	Teen Population Aged 16-19	Teen Drivers as a Share of Teen Population
	Million		Percent
1963	7.2	12.5	57.8
1964	7.9	13.1	59.9
1965	8.6	13.7	63.0
1966	9.0	14.1	63.5
1967	8.9	14.4	61.7
1968	9.0	14.7	61.1
1969	9.4	15.1	62.4
1970	9.9	15.4	63.9
1971	9.9	15.8	62.6
1972	10.4	16.2	64.3
1973	10.9	16.5	66.2
1974	11.4	16.7	67.9
1975	11.7	16.9	69.0
1976	11.9	17.1	69.3
1977	11.8	17.2	68.9
1978	12.0	17.3	69.5
1979	11.9	17.2	68.8
1980	11.5	17.2	67.0
1981	11.2	16.9	66.3
1982	11.0	16.6	66.3
1983	11.3	16.2	69.7
1984	10.2	15.8	64.6
1985	10.0	15.5	64.7
1986	9.9	15.2	65.4
1987	10.0	14.9	67.2
1988	10.0	14.8	67.4
1989	9.7	14.7	66.0
1990	9.2	14.6	63.4
1991	8.8	14.5	60.8
1992	8.8	14.5	60.6
1993	8.8	14.5	60.6
1994	8.9	14.6	61.1
1995	9.1	14.9	61.4
1996	9.2	15.1	61.2
1997	9.6	15.4	62.7
1998	9.8	15.7	62.4
1999	9.6	16.0	60.0
2000	9.7	16.3	59.7
2001	9.4	16.6	56.8
2002	9.3	16.8	55.3
2003	9.3	17.0	54.6
2004	9.3	17.1	54.5
2005	9.3	17.3	54.0
2006	9.7	17.4	56.1
2007	9.9	17.4	56.9
2008	10.0	17.6	56.7
2009	9.9	17.7	56.2
2010	9.6	17.7	53.8
2011	9.3	17.7	52.2
2012	8.8	17.7	49.7

Source: Compiled by Earth Policy Institute with number of teen drivers from "Licensed drivers, by sex and percentage in each age group," *Highway Statistics Series* (Washington, DC: U.S. Department of Transportation (DOT), Federal Highway Administration, various years, and number of people age 16-19 from U.N. Population Division, *World Population Prospects: The 2012 Revision*, electronic database, at esa.un.org/unpd/wpp/index.htm, updated 13 June 2013.

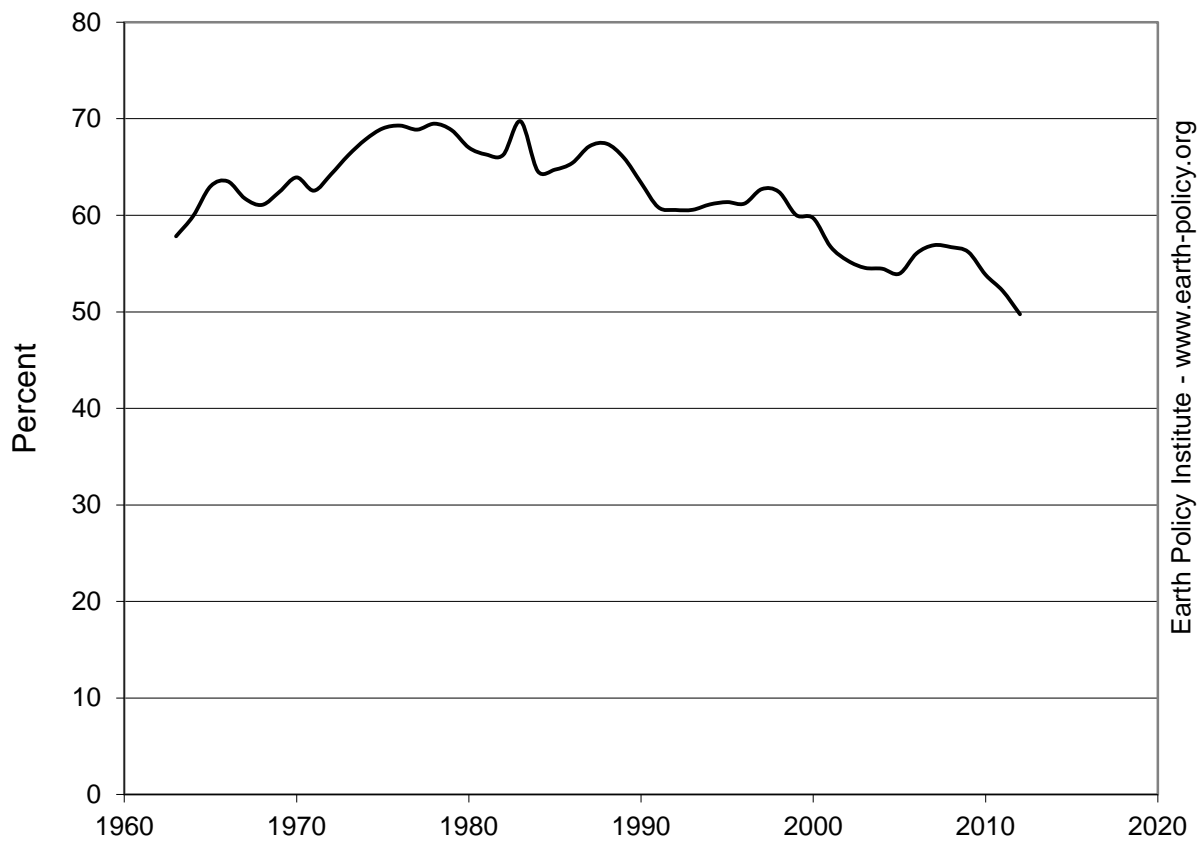
Number of Teen Drivers in the United States, 1963-2012



Source: DOT

Earth Policy Institute - www.earth-policy.org

Teen Drivers as a Share of Teen Population in the United States, 1963-2012



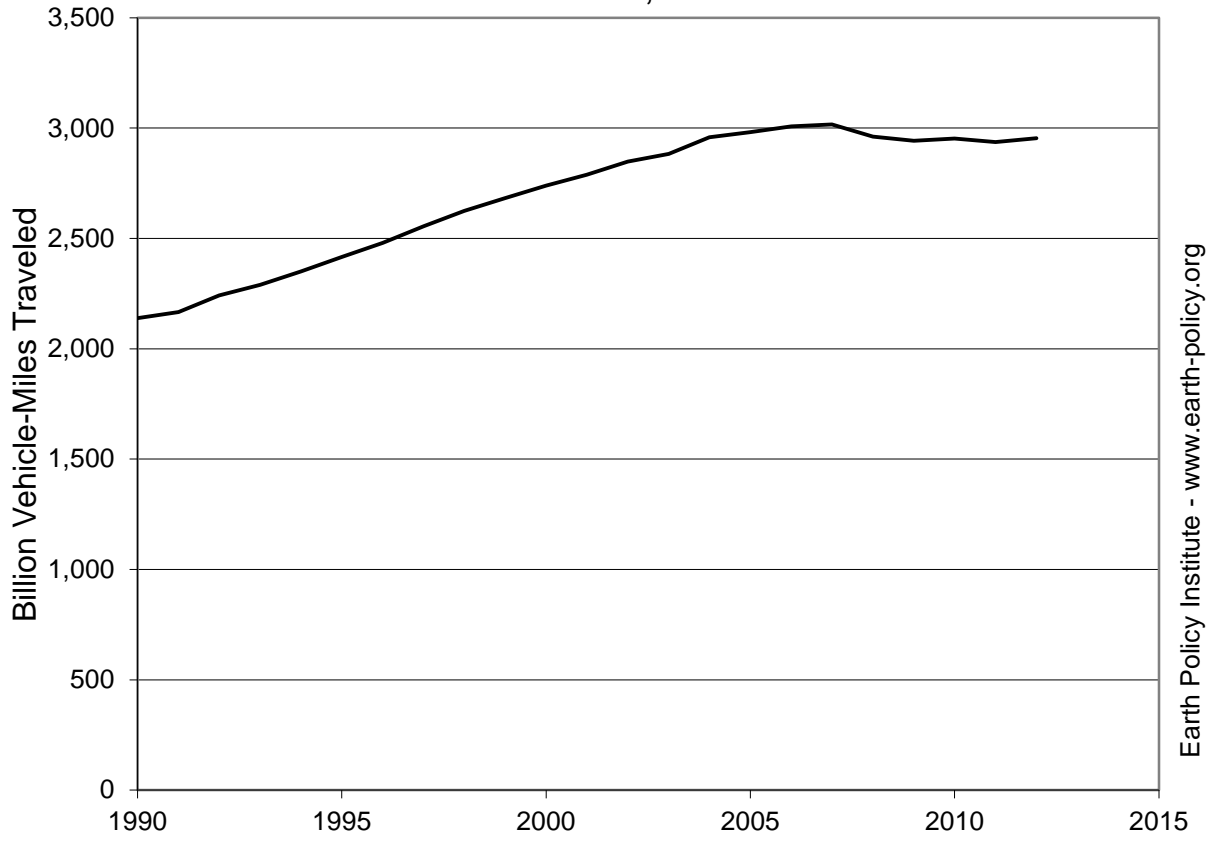
Source: EPI from DOT, UN

Miles Traveled by Cars, Trucks, and Motorcycles in the United States, 1960-2012

Year	Total
	Billion Vehicle Miles
1960	714
1965	883
1970	1,105
1975	1,322
1980	1,521
1985	1,770
1990	2,139
1991	2,166
1992	2,241
1993	2,290
1994	2,351
1995	2,416
1996	2,479
1997	2,555
1998	2,625
1999	2,683
2000	2,739
2001	2,789
2002	2,849
2003	2,883
2004	2,958
2005	2,982
2006	3,008
2007	3,017
2008	2,962
2009	2,942
2010	2,953
2011	2,937
2012	2,954

Source: Compiled by Earth Policy Institute from U.S. Department of Transportation (DOT), Bureau of Transportation Statistics, "National Transportation Statistics: Table 1-35: U.S. Vehicle-Miles (Millions)," at www.bts.gov/publications/national_transportation_statistics, updated July 2014.

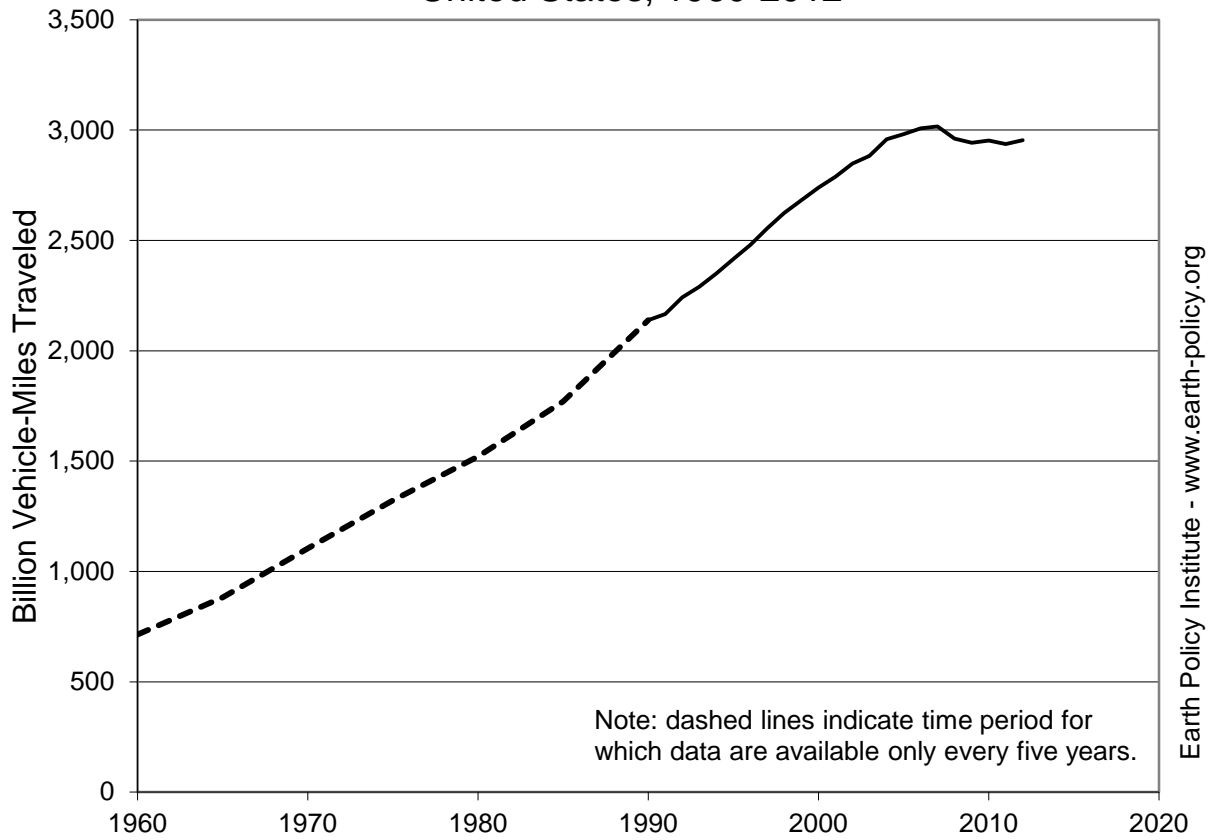
Miles Traveled by Cars, Trucks, and Motorcycles in the United States, 1990-2012



Source: DOT

Earth Policy Institute - www.earth-policy.org

Miles Traveled by Cars, Trucks, and Motorcycles in the United States, 1960-2012



Source: DOT

Average U.S. Retail Fuel Prices

Date	Gasoline	Diesel	Electricity
	Dollars per Gasoline Gallon Equivalent		
Apr-2000	1.52	1.29	0.81
Oct-2000	1.54	1.46	0.84
Jun-2001	1.68	1.37	0.90
Oct-2001	1.27	1.19	0.88
Feb-2002	1.11	1.04	0.81
Apr-2002	1.40	1.19	0.83
Jul-2002	1.41	1.18	0.87
Oct-2002	1.44	1.35	0.84
Feb-2003	1.61	1.50	0.79
Dec-2003	1.48	1.34	0.82
Mar-2004	1.74	1.47	0.85
Jun-2004	1.99	1.55	0.92
Nov-2004	1.97	1.93	0.89
Mar-2005	2.11	2.03	0.88
Sep-2005	2.77	2.54	0.98
Jan-2006	2.23	2.32	0.95
May-2006	2.84	2.69	1.05
Sep-2006	2.22	2.37	1.08
Feb-2007	2.30	2.37	0.98
Jul-2007	3.03	2.67	1.10
Oct-2007	2.76	2.81	1.07
Jan-2008	2.99	3.05	1.01
Apr-2008	3.43	3.71	1.08
Jul-2008	3.91	4.22	1.19
Oct-2008	3.04	3.27	1.17
Jan-2009	1.86	2.19	1.11
Apr-2009	2.02	2.04	1.14
Jul-2009	2.44	2.27	1.19
Oct-2009	2.64	2.50	1.12
Jan-2010	2.65	2.57	1.08
Apr-2010	2.84	2.71	1.16
Jul-2010	2.71	2.65	1.19
Oct-2010	2.78	2.75	1.18
Jan-2011	3.08	3.09	1.10
Apr-2011	3.69	3.62	1.18
Jul-2011	3.68	3.54	1.20
Sep-2011	3.46	3.42	1.20
Jan-2012	3.37	3.47	1.14
Mar-2012	3.89	3.71	1.18
Jul-2012	3.52	3.36	1.19
Sep-2012	3.82	3.70	1.19
Jan-2013	3.29	3.55	1.14
Mar-2013	3.59	3.58	1.18
Jul-2013	3.65	3.50	1.25
Oct-2013	3.45	3.51	1.22
Jan-2014	3.34	3.49	1.15
Apr-2014	3.65	3.56	1.19
Jul-2014	3.70	3.51	1.19
Oct-2014	3.34	3.38	1.24
Jan-2015	2.30	2.75	1.27

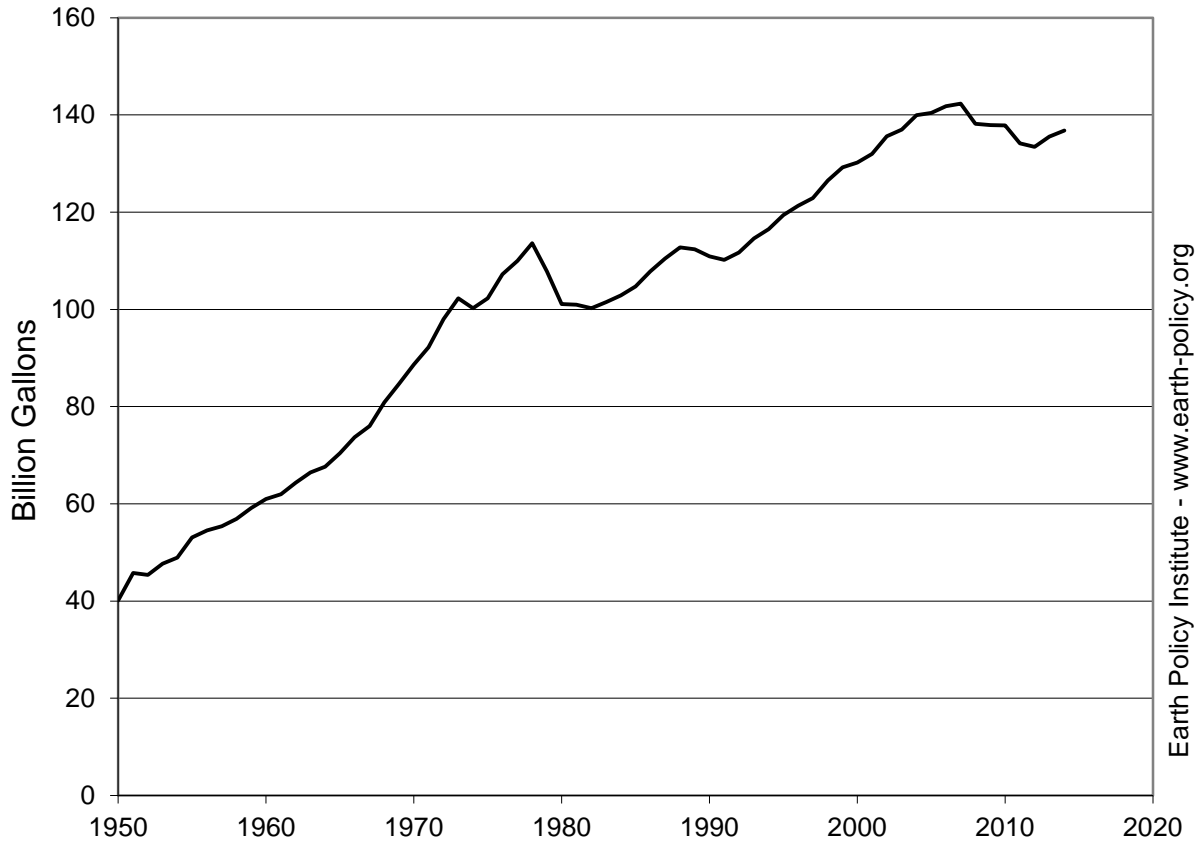
Source: Compiled by Earth Policy Institute from U.S. Department of Energy, Energy Efficiency and Renewable Energy, *Alternative Fuel Price Reports*, at www.afdc.energy.gov/fuels/prices.html, updated 20 March 2015.

U.S. Motor Gasoline Consumption, 1950-2014

Year	Consumption	
	Million Barrels	Billion Gallons
1950	955	40.1
1951	1,090	45.8
1952	1,081	45.4
1953	1,135	47.7
1954	1,166	49.0
1955	1,264	53.1
1956	1,298	54.5
1957	1,320	55.4
1958	1,354	56.9
1959	1,409	59.2
1960	1,453	61.0
1961	1,476	62.0
1962	1,533	64.4
1963	1,582	66.4
1964	1,611	67.7
1965	1,676	70.4
1966	1,755	73.7
1967	1,810	76.0
1968	1,925	80.9
1969	2,017	84.7
1970	2,111	88.7
1971	2,195	92.2
1972	2,334	98.0
1973	2,436	102.3
1974	2,386	100.2
1975	2,436	102.3
1976	2,554	107.3
1977	2,620	110.0
1978	2,705	113.6
1979	2,568	107.8
1980	2,408	101.1
1981	2,404	101.0
1982	2,387	100.2
1983	2,417	101.5
1984	2,449	102.9
1985	2,493	104.7
1986	2,567	107.8
1987	2,630	110.5
1988	2,685	112.8
1989	2,675	112.3
1990	2,641	110.9
1991	2,623	110.2
1992	2,660	111.7
1993	2,729	114.6
1994	2,774	116.5
1995	2,843	119.4
1996	2,888	121.3
1997	2,926	122.9
1998	3,012	126.5
1999	3,077	129.2
2000	3,101	130.2
2001	3,143	132.0
2002	3,229	135.6
2003	3,261	137.0
2004	3,333	140.0
2005	3,343	140.4
2006	3,377	141.8
2007	3,389	142.3
2008	3,290	138.2
2009	3,284	137.9
2010	3,282	137.9
2011	3,195	134.2
2012	3,178	133.5
2013	3,228	135.6
2014	3,257	136.8

Source: Compiled by Earth Policy Institute from U.S. Department of Energy (DOE), Energy Information Administration (EIA), "U.S. Product Supplied of Finished Motor Gasoline," at tonto.eia.doe.gov/dnav/pet/hist/LeafHandler.ashx?n=p&f=a, updated 27 February 2015; with 2014 from DOE, EIA, "Petroleum & Other Liquids Supply and Disposition," at www.eia.gov/dnav/pet/pet_sum_snd_d_nus_mbbbl_m_cur.htm, updated 27 February 2015; conversion from barrels to gallons from DOE, EIA, "How many gallons of diesel fuel and gasoline are made from one barrel of oil?," at www.eia.gov/tools/faqs/faq.cfm?id=327&t=10, updated 16 December 2014.

U.S. Motor Gasoline Consumption, 1950-2014



Source: EIA

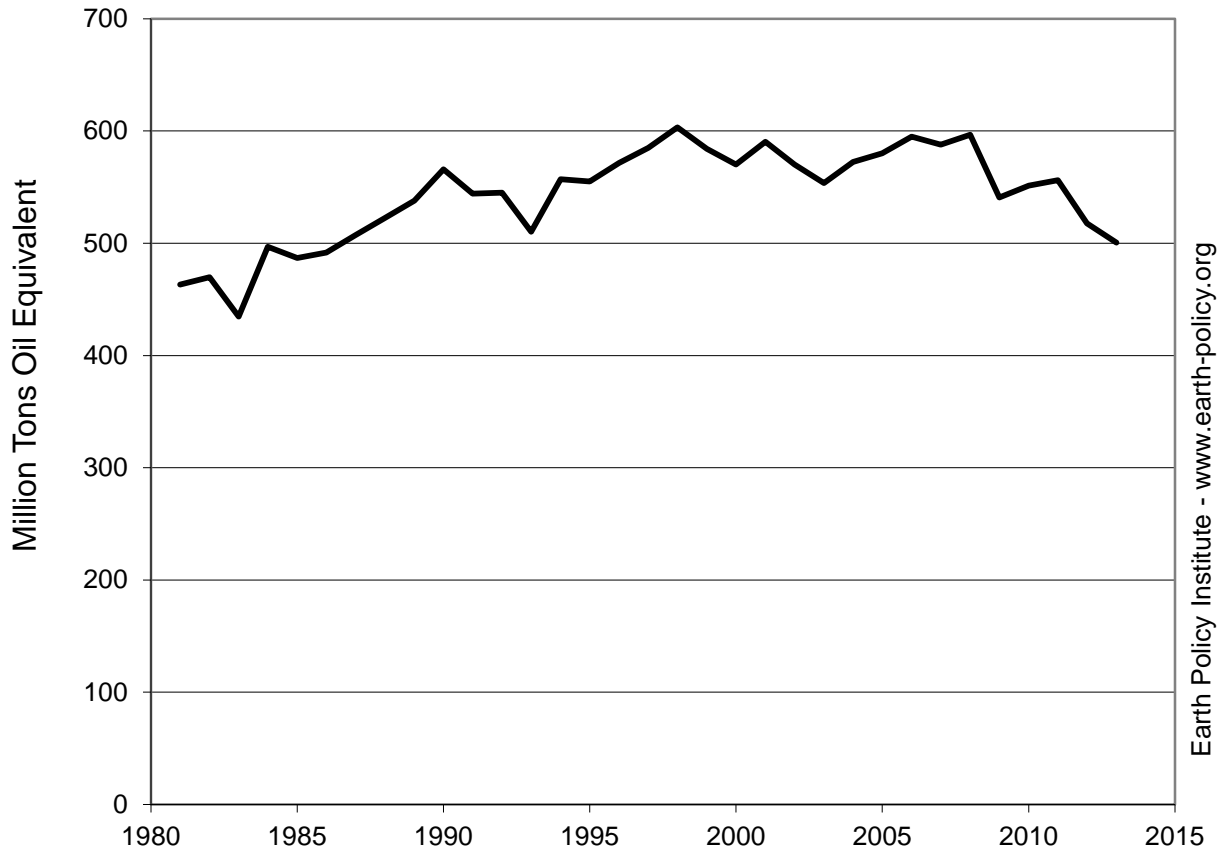
Earth Policy Institute - www.earth-policy.org

Coal Production in the United States, 1981-2013

<u>Year</u>	<u>Production</u> Million Tons Oil Equivalent
1981	463
1982	470
1983	435
1984	497
1985	487
1986	492
1987	508
1988	523
1989	538
1990	566
1991	544
1992	545
1993	510
1994	557
1995	555
1996	572
1997	585
1998	603
1999	584
2000	570
2001	590
2002	570
2003	554
2004	572
2005	580
2006	595
2007	588
2008	597
2009	541
2010	551
2011	556
2012	518
2013	501

Source: BP, *Statistical Review of World Energy June 2014* (London: 2014).

Coal Production in the United States, 1981-2013



Source: BP

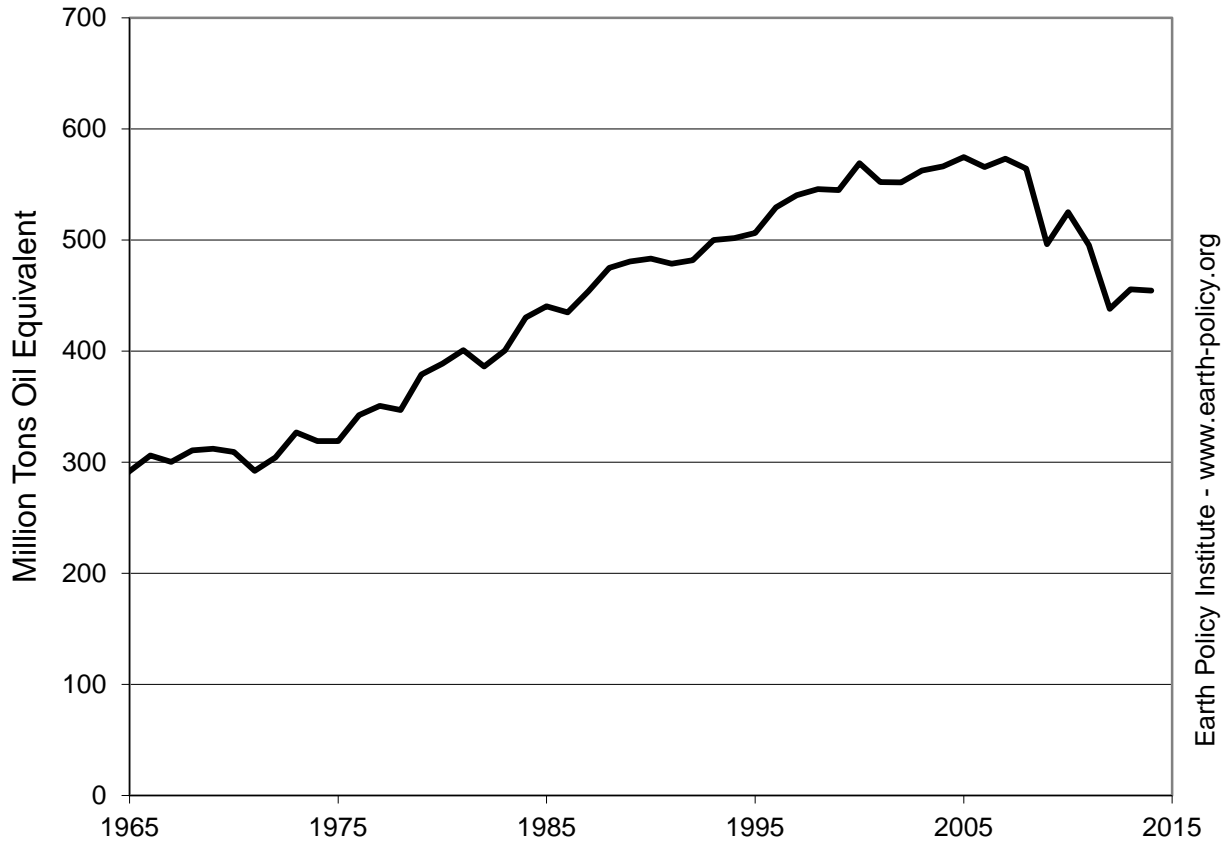
Earth Policy Institute - www.earth-policy.org

Coal Consumption in the United States, 1950-2014

Year	Coal Consumption	
	Quadrillion Btu	Million Tons of Oil Equivalent
1950	12.3	311
1951	12.6	316
1952	11.3	285
1953	11.4	287
1954	9.7	245
1955	11.2	281
1956	11.3	286
1957	10.8	273
1958	9.5	240
1959	9.5	240
1960	9.8	248
1961	9.6	243
1962	9.9	250
1963	10.4	262
1964	11.0	276
1965	11.6	292
1966	12.1	306
1967	11.9	300
1968	12.3	311
1969	12.4	312
1970	12.3	309
1971	11.6	292
1972	12.1	304
1973	13.0	327
1974	12.7	319
1975	12.7	319
1976	13.6	342
1977	13.9	351
1978	13.8	347
1979	15.0	379
1980	15.4	389
1981	15.9	401
1982	15.3	386
1983	15.9	401
1984	17.1	430
1985	17.5	440
1986	17.3	435
1987	18.0	454
1988	18.8	475
1989	19.1	481
1990	19.2	483
1991	19.0	479
1992	19.1	482
1993	19.8	500
1994	19.9	502
1995	20.1	506
1996	21.0	529
1997	21.4	540
1998	21.7	546
1999	21.6	545
2000	22.6	569
2001	21.9	552
2002	21.9	552
2003	22.3	562
2004	22.5	566
2005	22.8	574
2006	22.4	566
2007	22.7	573
2008	22.4	564
2009	19.7	496
2010	20.8	525
2011	19.7	495
2012	17.4	438
2013	18.1	456
2014	18.0	455

Source: Compiled by Earth Policy Institute with consumption data for 1950-2013 from "Coal Consumption by Sector," Table 6.2 and heat content data for 1950-2013 from "Approximate Heat Content of Coal and Coke Coal," Table A5 in U.S. Department of Energy (DOE), Energy Information Administration (EIA), "Monthly Energy Review," at www.eia.gov/totalenergy/data/monthly, updated 28 January 2015; consumption for 2014 from DOE, EIA, *Short Term Energy Outlook: Custom Table Builder*, electronic database, at www.eia.gov/forecasts/steo/query, updated 13 January 2015; heat content data in 2014 assumed to be equivalent to that in 2013.

Coal Consumption in the United States, 1950-2014



Source: EIA

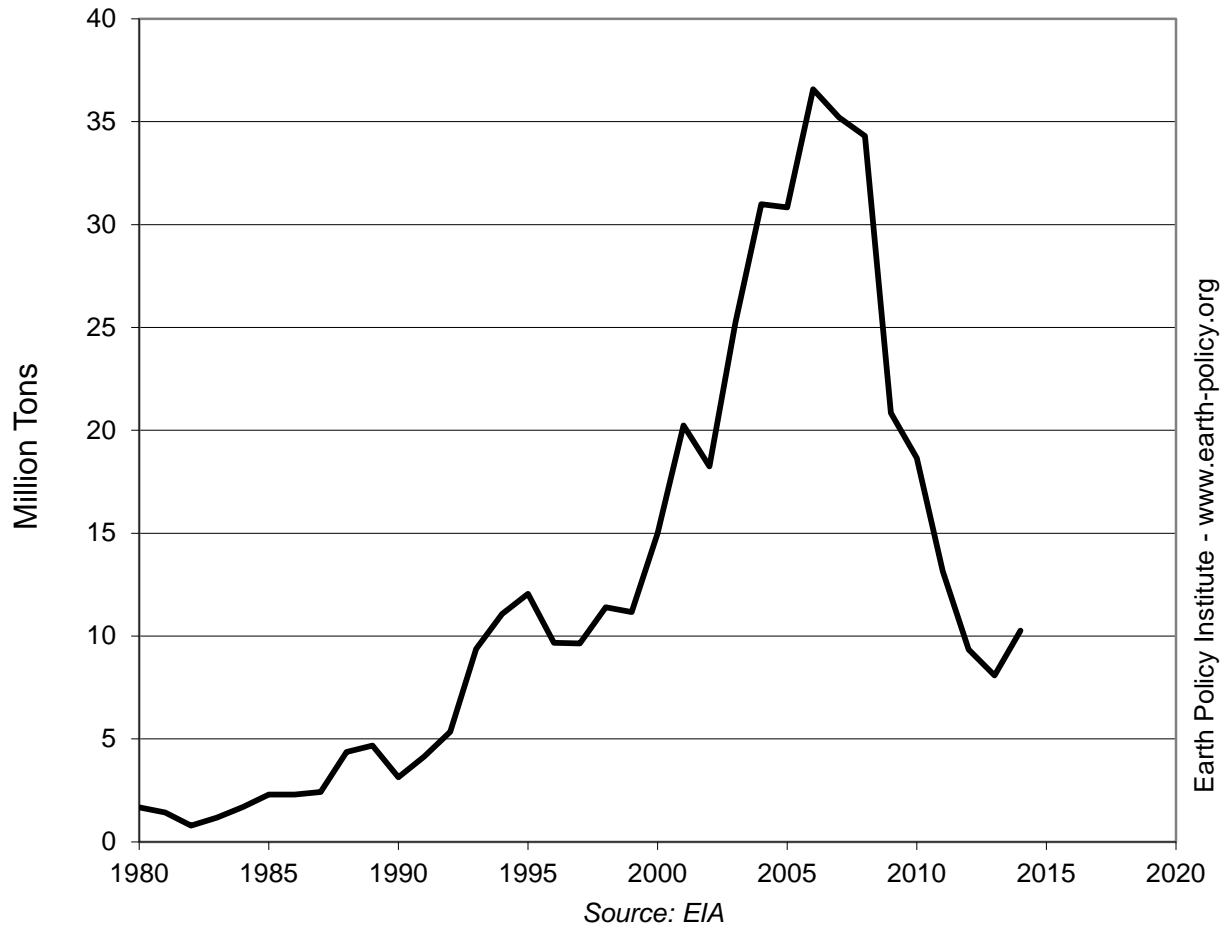
Earth Policy Institute - www.earth-policy.org

Coal Imports and Exports in the United States, 1980-2014

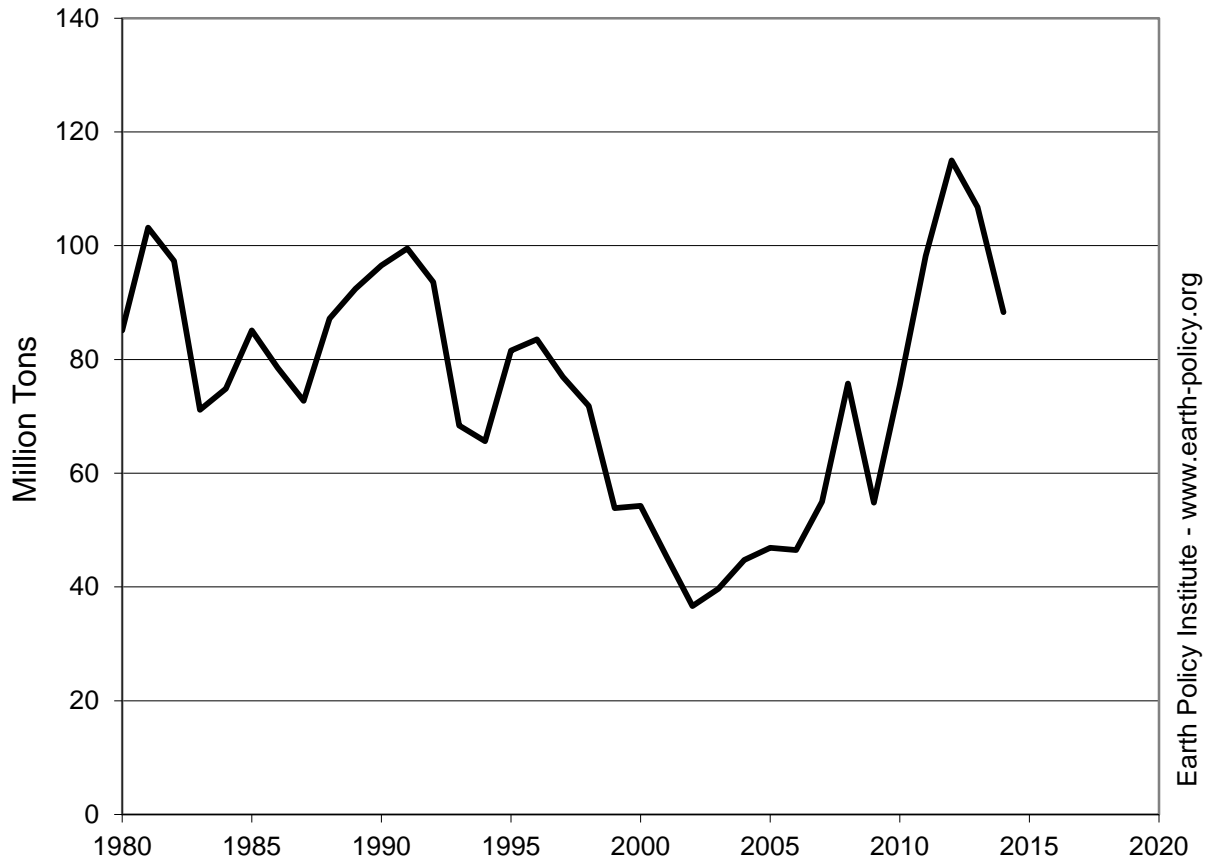
Year	Imports	Exports	Imports	Exports
	Million Tons		Quadrillion Btu	
1980	1.7	85.1	0.05	2.5
1981	1.4	103.2	0.04	3.0
1982	0.8	97.3	0.02	2.8
1983	1.2	71.2	0.03	2.1
1984	1.7	74.9	0.05	2.2
1985	2.3	85.1	0.06	2.5
1986	2.3	78.5	0.06	2.3
1987	2.4	72.7	0.07	2.1
1988	4.4	87.2	0.12	2.5
1989	4.7	92.4	0.13	2.7
1990	3.1	96.5	0.09	2.8
1991	4.1	99.5	0.11	2.9
1992	5.4	93.6	0.15	2.7
1993	9.4	68.4	0.26	2.0
1994	11.1	65.6	0.30	1.9
1995	12.1	81.5	0.33	2.4
1996	9.7	83.5	0.27	2.4
1997	9.6	76.9	0.27	2.2
1998	11.4	71.8	0.31	2.1
1999	11.2	53.9	0.31	1.5
2000	15.0	54.3	0.41	1.6
2001	20.2	45.4	0.56	1.3
2002	18.2	36.6	0.50	1.1
2003	25.2	39.7	0.69	1.1
2004	31.0	44.7	0.85	1.3
2005	30.8	46.9	0.85	1.3
2006	36.6	46.5	1.01	1.3
2007	35.2	55.0	0.97	1.5
2008	34.3	75.7	0.94	2.1
2009	20.9	54.8	0.57	1.5
2010	18.7	75.5	0.51	2.1
2011	13.2	98.2	0.36	2.8
2012	9.3	115.0	0.24	3.1
2013	8.1	106.7	0.21	2.9
2014	10.3	88.3	0.26	2.4

Source: Compiled by Earth Policy Institute with 1980-2013 from U.S. Department of Energy (DOE), Energy Information Administration (EIA), *International Energy Statistics*, at www.eia.gov/cfapps/ipdbproject, viewed 2 April 2015; short tons converted to metric tons using International Energy Agency, "Unit Converter," at www.iea.org/statistics/resources/unitconverter, viewed 30 March 2015; 2013-2014 data from "Coal Overview," Table 6.1, and heat content data for 1950-2014 from "Approximate Heat Content of Coal and Coke Coal," Table A5 in DOE, EIA, "Monthly Energy Review," at www.eia.gov/totalenergy/data/monthly, updated 26 March 2015.

Coal Imports in the United States, 1980-2014



Coal Exports from the United States, 1980-2014



Source: EIA

Earth Policy Institute - www.earth-policy.org