

World on the Edge - Supporting Data for Chapter 1

[World Grain Production, Area, and Yield, 1960-2010](#)

GRAPH: World Grain Production, 1960-2010

GRAPH: World Grain Area Harvested, 1960-2010

GRAPH: World Grain Yield, 1960-2010

[World Grain Production, Consumption, and Stocks, 1960-2010](#)

GRAPH: World Grain Production and Consumption, 1960-2010

GRAPH: World Grain Stocks, 1960-2010

GRAPH: World Grain Stocks as Days of Consumption, 1960-2010

[Grain Production in the Russian Federation, 1987-2010](#)

GRAPH: Grain Production in the Russian Federation, 1987-2010

[Gross World Product, 1950-2009](#)

GRAPH: Gross World Product, 1950-2009

GRAPH: Gross World Product Per Person, 1950-2009

[Pakistan Government Spending on Defense, Health, and Education, 1998-2009](#)

GRAPH: Pakistan Government Spending on Defense, Health, and Education, 1998-2009

[U.S. Government Spending on Defense, Health, and Education, 1990-2008](#)

Graph: U.S. Government Spending on Defense, Health, and Education, 1990-2008

[Undernourishment in the World, 1969-2010](#)

GRAPH: Number of Undernourished People in the World, 1969-2010

[Undernourishment in the World and in Selected Groups and Regions, 2010](#)

[World Monthly Food Price Indices, January 1990 – January 2011](#)

GRAPH: World Monthly Food Price Index, January 1990 – January 2011

GRAPH: World Monthly Grains Price Index, January 1990 – January 2011

GRAPH: World Monthly Price Indices for Meat, Dairy, Oils, Sugar, and Grains, January 1990 – January 2011

[Humanity's Ecological Footprint, 1961-2007](#)

GRAPH: Humanity's Ecological Footprint, 1961-2007

A full listing of data for the entire book is on-line at:

http://www.earth-policy.org/books/wote/wote_data

This is part of a supporting dataset for Lester R. Brown, **World On the Edge: How to Prevent Environmental and Economic Collapse** (New York: W.W. Norton & Company, 2010). For more information and a free download of the book, see Earth Policy Institute on-line at www.earth-policy.org.

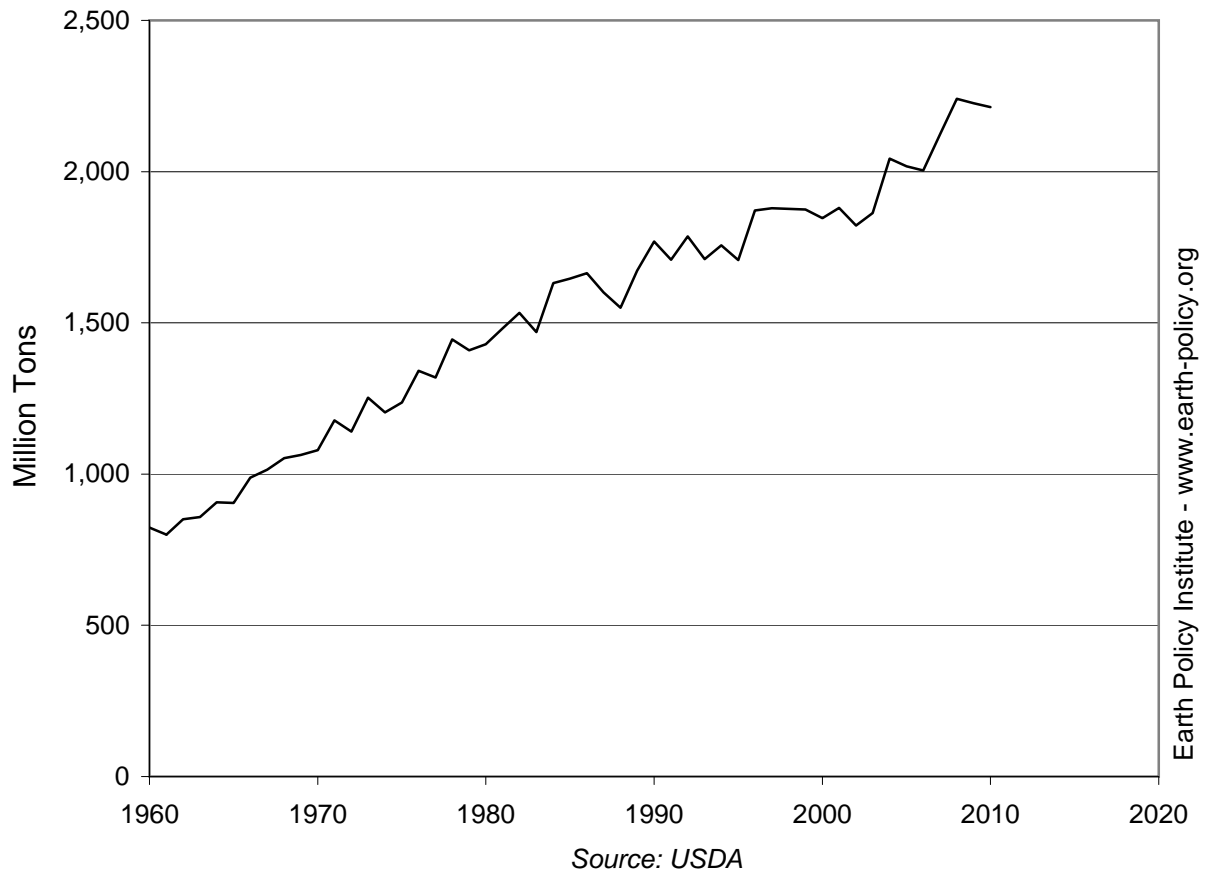
World Grain Production, Area, and Yield, 1960-2010

Year	Production Million Tons	Area Million Hectares	Yield Tons per Hectare
1960	824	639	1.29
1961	800	635	1.26
1962	850	641	1.33
1963	858	648	1.32
1964	906	657	1.38
1965	905	653	1.39
1966	988	655	1.51
1967	1,014	665	1.52
1968	1,052	670	1.57
1969	1,063	672	1.58
1970	1,079	663	1.63
1971	1,177	672	1.75
1972	1,141	661	1.73
1973	1,253	688	1.82
1974	1,203	690	1.74
1975	1,237	707	1.75
1976	1,342	716	1.87
1977	1,319	714	1.85
1978	1,445	713	2.03
1979	1,409	710	1.98
1980	1,429	722	1.98
1981	1,482	732	2.02
1982	1,533	717	2.14
1983	1,469	708	2.07
1984	1,632	711	2.29
1985	1,647	716	2.30
1986	1,664	710	2.34
1987	1,601	686	2.33
1988	1,550	689	2.25
1989	1,673	697	2.40
1990	1,769	696	2.54
1991	1,709	694	2.46
1992	1,786	695	2.57
1993	1,711	685	2.50
1994	1,756	685	2.56
1995	1,707	682	2.50
1996	1,872	703	2.66
1997	1,879	691	2.72
1998	1,877	687	2.73
1999	1,874	670	2.80
2000	1,846	666	2.77
2001	1,880	667	2.82
2002	1,822	653	2.79
2003	1,864	665	2.80
2004	2,043	669	3.05
2005	2,017	674	2.99
2006	2,004	673	2.98
2007	2,125	692	3.07
2008	2,241	697	3.22
2009	2,226	686	3.24
2010	2,213	689	3.21

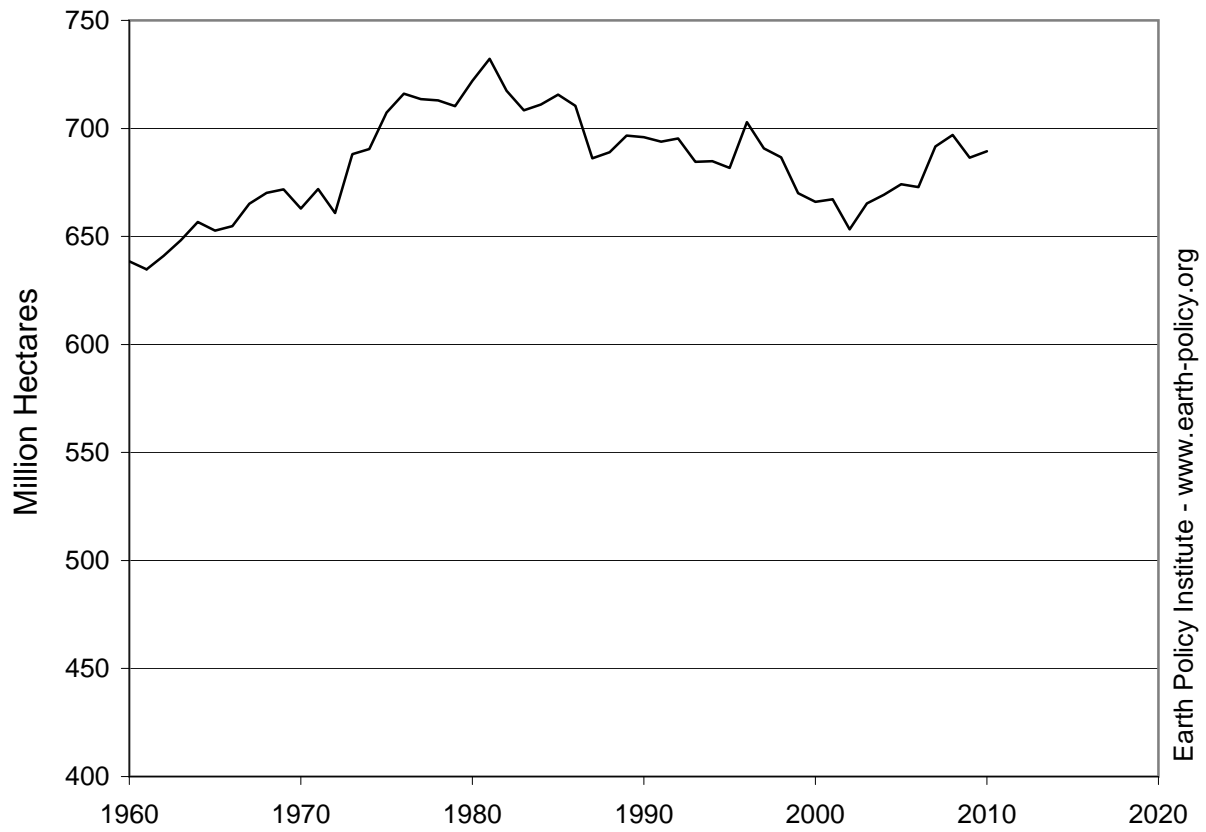
Source: U.S. Department of Agriculture, *Production, Supply and Distribution*, electronic database, at www.fas.usda.gov/psdonline, updated 12 August 2010.

This is part of a supporting dataset for Lester R. Brown, **World on the Edge: How to Prevent Environmental and Economic Collapse** (New York: W.W. Norton & Company, 2011). For more information and a free download of the book, see Earth Policy Institute online at www.earth-policy.org.

World Grain Production, 1960-2010



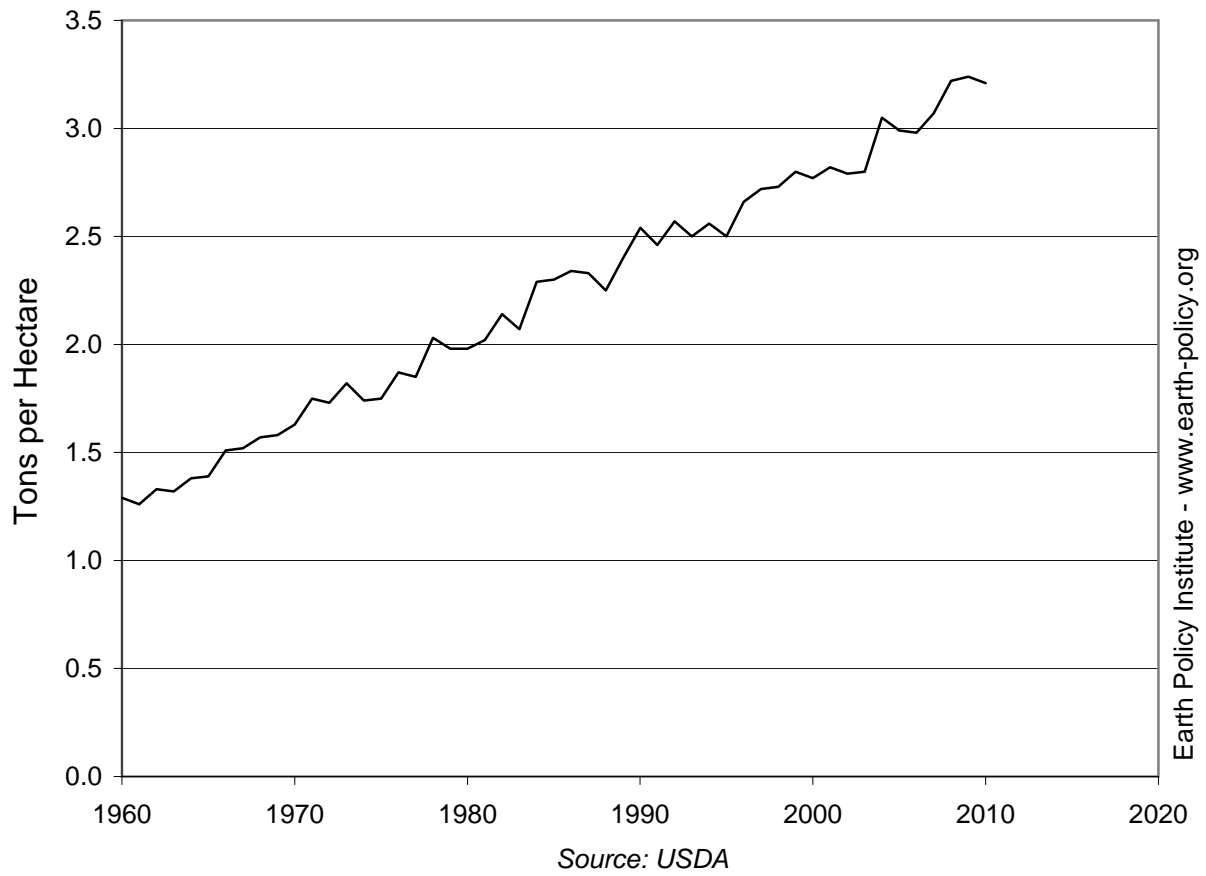
World Grain Area Harvested, 1960-2010



Source: USDA

Earth Policy Institute - www.earth-policy.org

World Grain Yield, 1960-2010

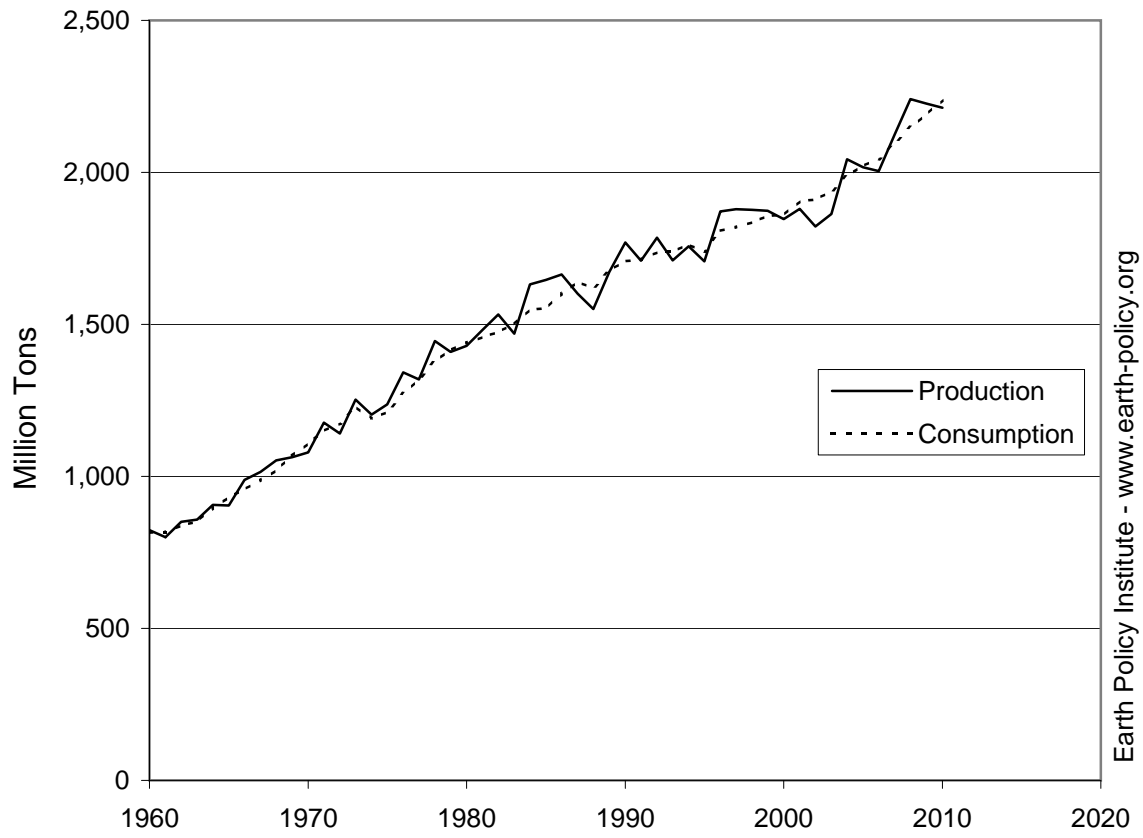


World Grain Production, Consumption, and Stocks, 1960-2010

Year	Production	Consumption	Surplus or Deficit	Stocks		
				Stocks	Share of Consumption	Stocks
	Million Tons			Million Tons	Percent	Days of Consumption
1960	824	815	8	203	25	91
1961	800	817	-17	182	22	81
1962	850	838	13	190	23	83
1963	858	852	6	193	23	83
1964	906	896	10	194	22	79
1965	905	932	-27	159	17	62
1966	988	957	32	189	20	72
1967	1,014	988	27	213	22	79
1968	1,052	1,020	32	244	24	87
1969	1,063	1,069	-6	228	21	78
1970	1,079	1,108	-29	193	17	64
1971	1,177	1,150	27	218	19	69
1972	1,141	1,174	-33	180	15	56
1973	1,253	1,230	23	192	16	57
1974	1,203	1,190	13	199	17	61
1975	1,237	1,212	25	219	18	66
1976	1,342	1,273	69	280	22	80
1977	1,319	1,319	0	278	21	77
1978	1,445	1,380	65	333	24	88
1979	1,409	1,416	-6	328	23	84
1980	1,429	1,440	-11	308	21	78
1981	1,482	1,458	24	331	23	83
1982	1,533	1,475	58	389	26	96
1983	1,469	1,501	-31	348	23	85
1984	1,632	1,549	83	428	28	101
1985	1,647	1,553	94	518	33	122
1986	1,664	1,601	63	572	36	130
1987	1,601	1,640	-39	528	32	118
1988	1,550	1,620	-70	451	28	102
1989	1,673	1,677	-4	441	26	96
1990	1,769	1,707	62	495	29	106
1991	1,709	1,714	-5	486	28	104
1992	1,786	1,737	49	522	30	110
1993	1,711	1,740	-29	484	28	102
1994	1,756	1,762	-6	479	27	99
1995	1,707	1,740	-33	437	25	92
1996	1,872	1,808	64	488	27	98
1997	1,879	1,820	59	542	30	109
1998	1,877	1,836	41	582	32	116
1999	1,874	1,857	18	586	32	115
2000	1,846	1,860	-14	566	30	111
2001	1,880	1,905	-26	536	28	103
2002	1,822	1,910	-88	443	23	85
2003	1,864	1,936	-73	358	18	67
2004	2,043	1,990	53	406	20	74
2005	2,017	2,021	-4	392	19	71
2006	2,004	2,044	-41	347	17	62
2007	2,125	2,096	28	369	18	64
2008	2,241	2,149	92	450	21	76
2009	2,226	2,190	36	477	22	79
2010	2,213	2,238	-25	444	20	72

Source: U.S. Department of Agriculture, *Production, Supply and Distribution*, electronic database, at www.fas.usda.gov/psdonline, updated 12 August 2010.

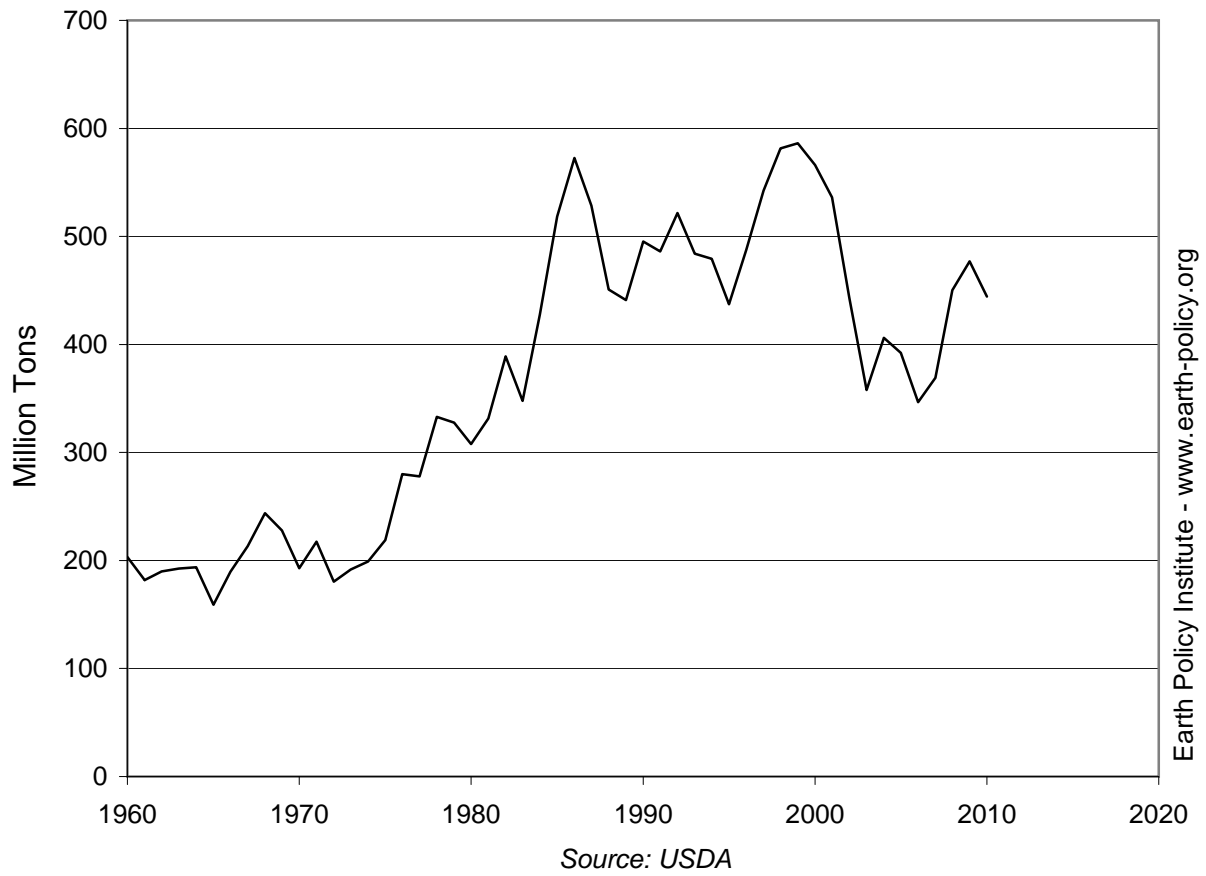
World Grain Production and Consumption, 1960-2010



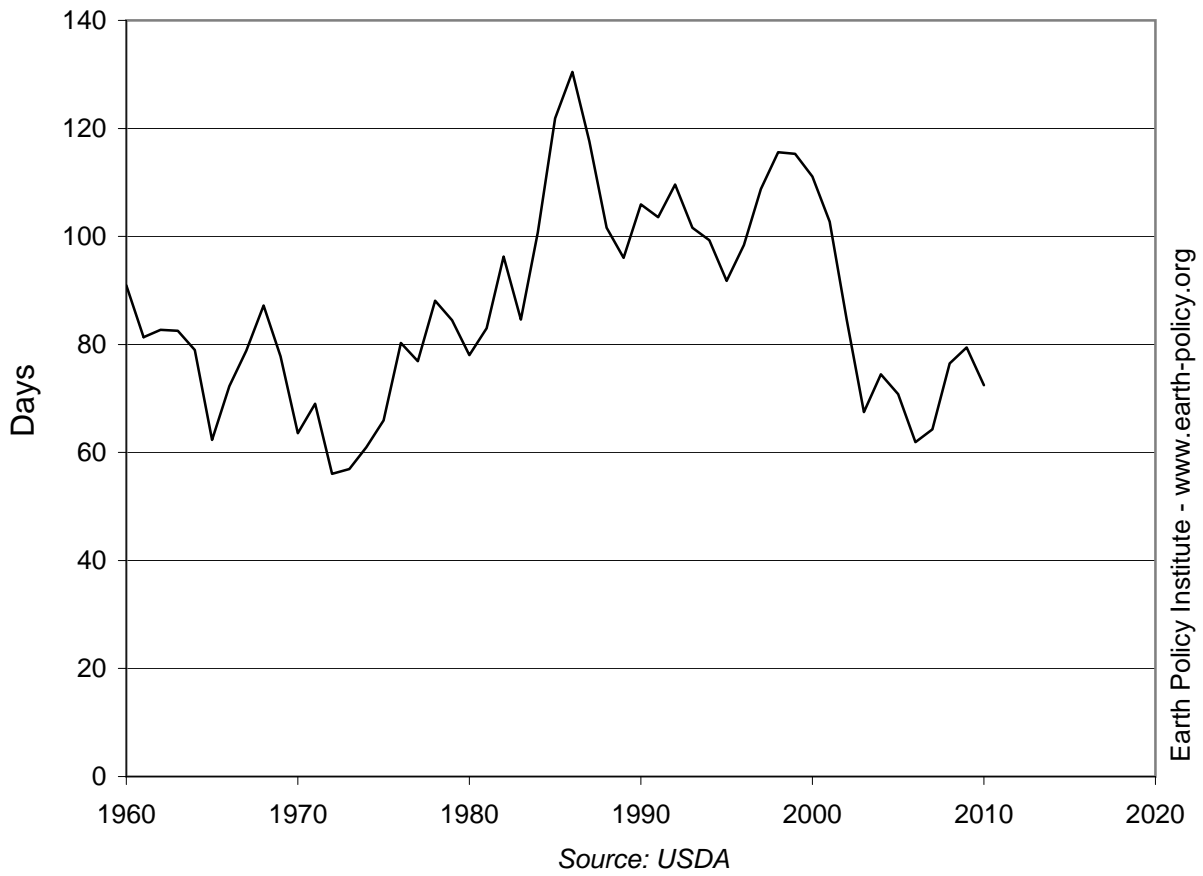
Source: USDA

Earth Policy Institute - www.earth-policy.org

World Grain Stocks, 1960-2010



World Grain Stocks as Days of Consumption, 1960-2010



Grain Production in the Russian Federation, 1987-2010

Year	Production Million Tons
1987	93
1988	89
1989	99
1990	111
1991	86
1992	102
1993	95
1994	78
1995	61
1996	67
1997	86
1998	46
1999	53
2000	63
2001	82
2002	84
2003	65
2004	75
2005	76
2006	76
2007	79
2008	105
2009	94
2010	60

Source: U.S. Department of Agriculture, *Production, Supply and Distribution*, electronic database, at www.fas.usda.gov/psdonline, updated 9 November 2010.

This is part of a supporting dataset for Lester R. Brown, **World on the Edge: How to Prevent Environmental and Economic Collapse** (New York: W.W. Norton & Company, 2011). For more information and a free download of the book, see Earth Policy Institute on-line at www.earth-policy.org.

Grain Production in the Russian Federation, 1987-2010

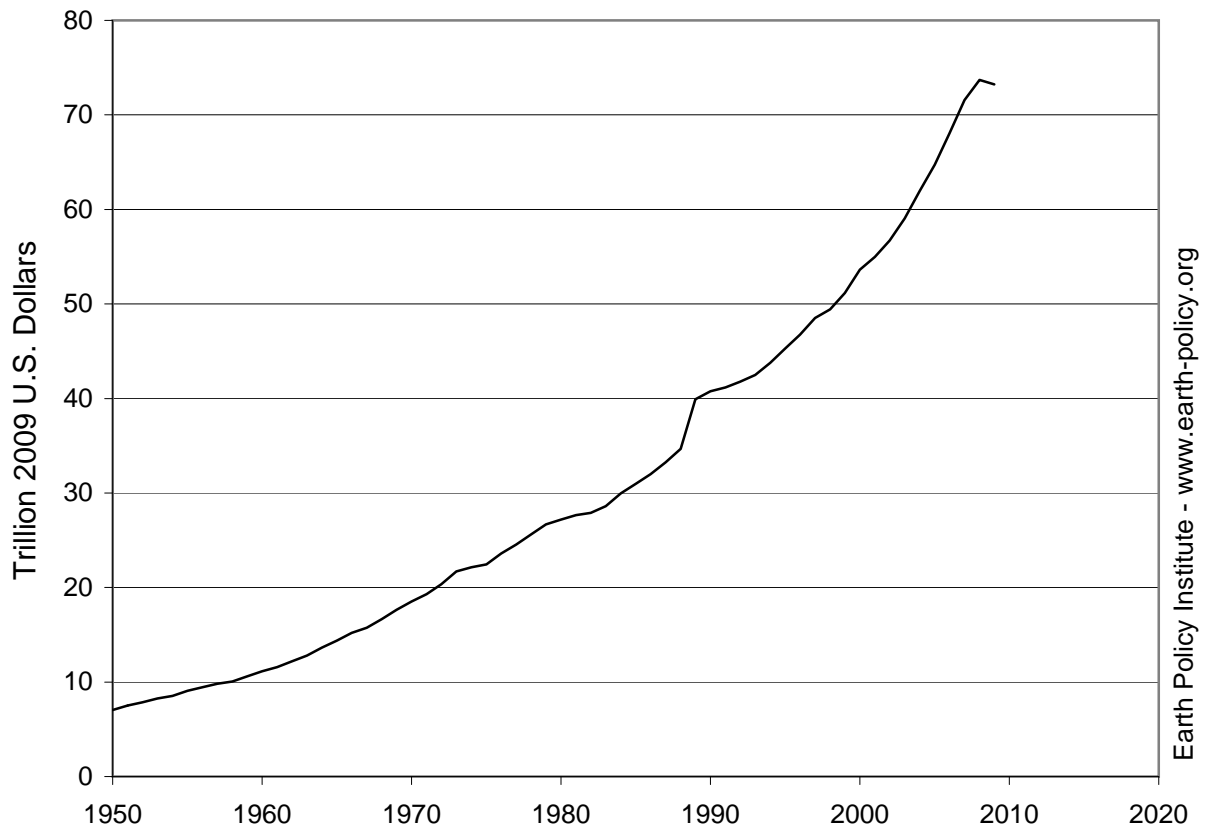


Gross World Product, 1950-2009

Year	Total	Per Person
	Trillion 2009 U.S. Dollars	2009 U.S. Dollars
1950	7.04	2,652
1951	7.51	2,779
1952	7.84	2,851
1953	8.25	2,944
1954	8.53	2,987
1955	9.07	3,117
1956	9.44	3,184
1957	9.81	3,245
1958	10.06	3,262
1959	10.60	3,373
1960	11.14	3,491
1961	11.57	3,578
1962	12.17	3,700
1963	12.79	3,812
1964	13.65	3,990
1965	14.38	4,120
1966	15.18	4,267
1967	15.76	4,343
1968	16.66	4,502
1969	17.65	4,679
1970	18.50	4,810
1971	19.31	4,920
1972	20.35	5,087
1973	21.69	5,319
1974	22.15	5,334
1975	22.46	5,316
1976	23.60	5,495
1977	24.54	5,619
1978	25.63	5,774
1979	26.67	5,907
1980	27.19	5,936
1981	27.67	5,929
1982	27.89	5,885
1983	28.60	5,923
1984	29.95	6,102
1985	30.98	6,213
1986	32.00	6,312
1987	33.24	6,450
1988	34.68	6,618
1989	39.92	7,389
1990	40.78	7,426
1991	41.16	7,388
1992	41.79	7,396
1993	42.50	7,420
1994	43.77	7,541
1995	45.30	7,704
1996	46.75	7,850
1997	48.50	8,042
1998	49.43	8,095
1999	51.16	8,388
2000	53.62	8,687
2001	54.99	8,804
2002	56.70	8,973
2003	59.03	9,237
2004	61.96	9,602
2005	64.74	9,907
2006	68.06	10,298
2007	71.58	10,711
2008	73.69	10,907
2009	73.24	10,728

Source: Data reproduced with permission from The Conference Board, Inc. © 2010 The Conference Board, Inc.

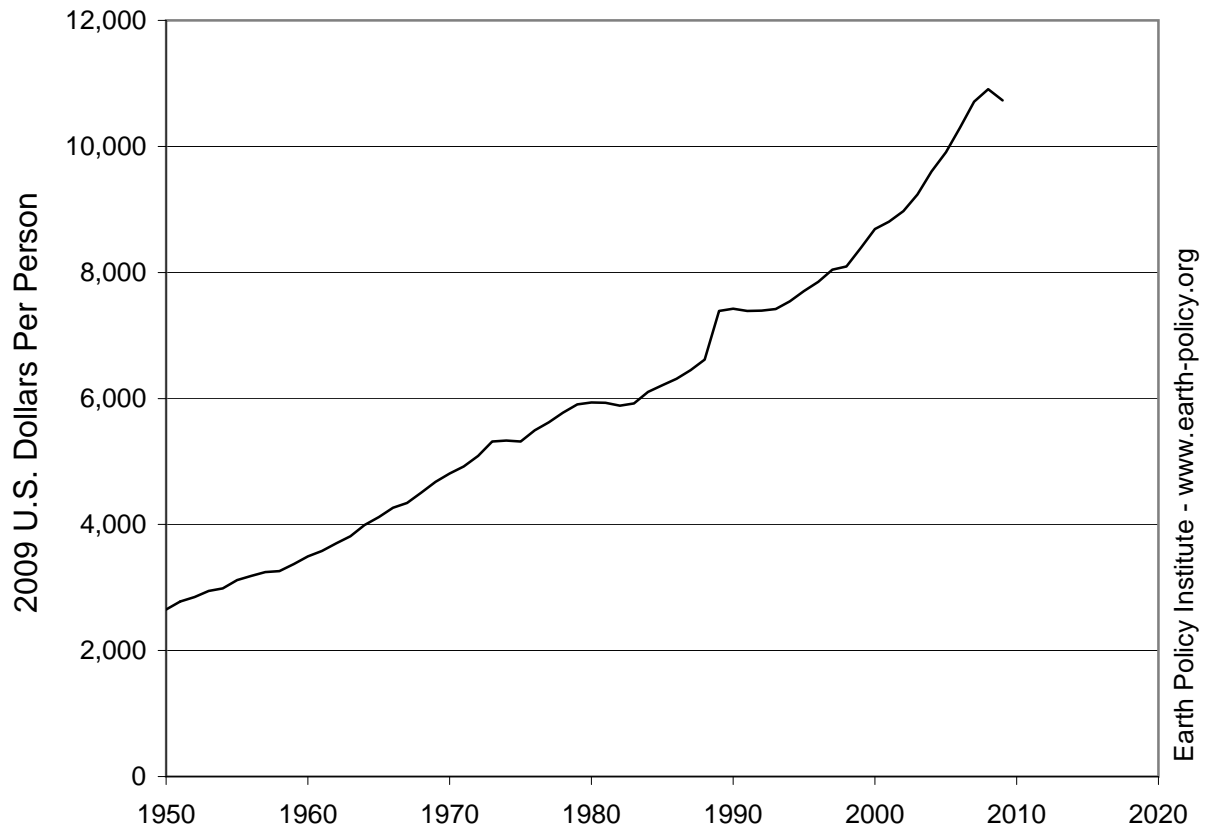
Gross World Product, 1950-2009



Source: The Conference Board

Earth Policy Institute - www.earth-policy.org

Gross World Product Per Person, 1950-2009



Source: The Conference Board

Pakistan Government Spending on Defense, Health, and Education, 1998-2009

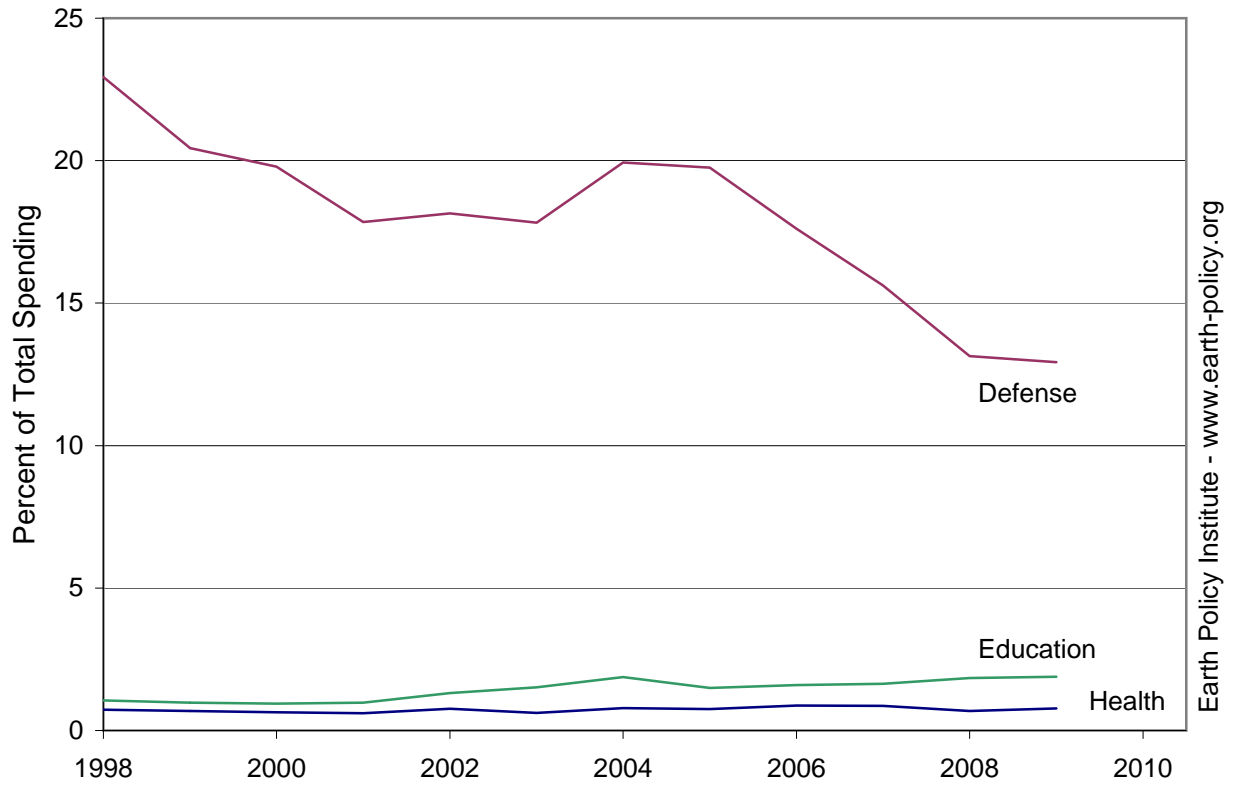
Year	Defense	Health	Education
Percent of Total Spending			
1998	22.93	0.73	1.06
1999	20.44	0.69	0.98
2000	19.79	0.64	0.94
2001	17.84	0.61	0.97
2002	18.15	0.77	1.32
2003	17.83	0.62	1.51
2004	19.94	0.79	1.88
2005	19.76	0.76	1.49
2006	17.61	0.88	1.59
2007	15.62	0.86	1.64
2008	13.14	0.68	1.85
2009	12.92	0.78	1.88

Note: Figures are based on a cash basis of recording, in which the time assigned to flows is when cash is received or disbursed.

Source: Compiled by Earth Policy Institute from International Monetary Fund (IMF), *Government Finance Statistics*, electronic database, at www.imfstatistics.org/gfs, updated December 2010.

This is part of a supporting dataset for Lester R. Brown, **World on the Edge: How to Prevent Environmental and Economic Collapse** (New York: W.W. Norton & Company, 2011). For more information and a free download of the book, see Earth Policy Institute online at www.earth-policy.org.

Pakistan Government Spending on Defense, Health, and Education, 1998-2009



Source: IMF

U.S. Government Spending on Defense, Health, and Education, 1990-2008

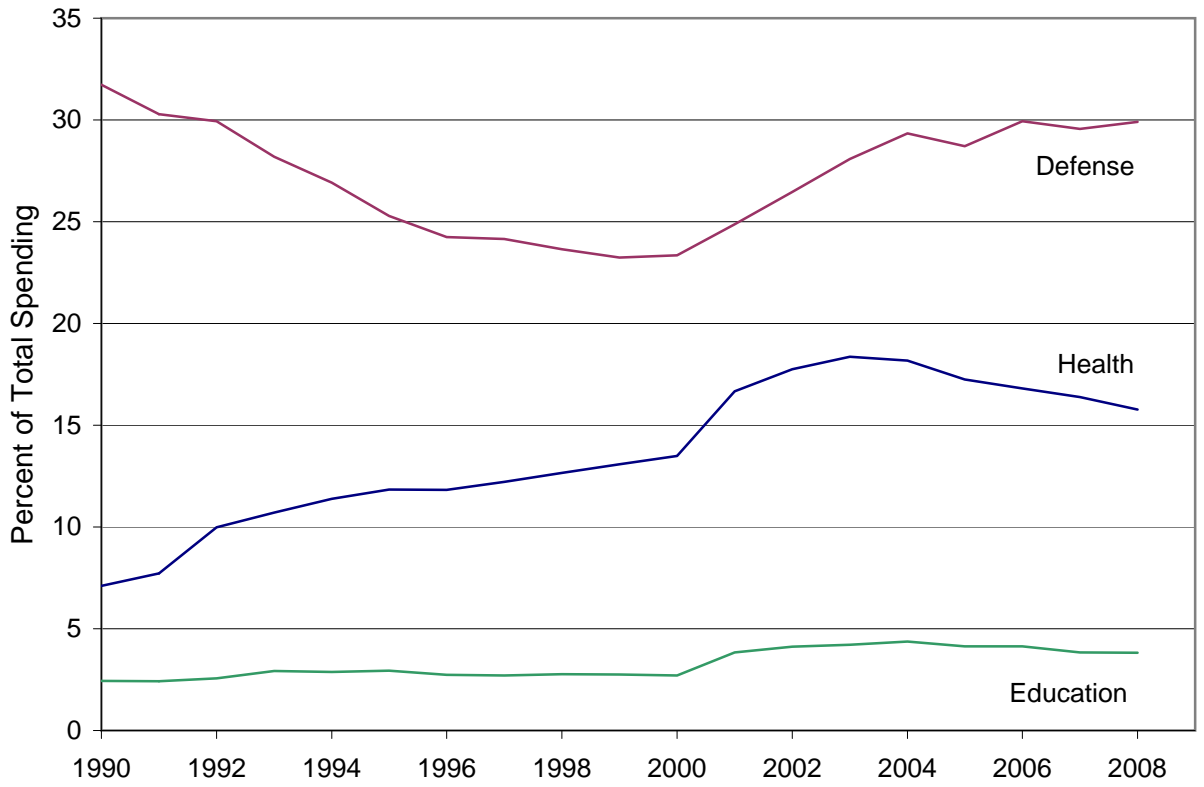
Year	Defense	Health	Education
Percent of Total Spending			
1990	31.72	7.11	2.44
1991	30.29	7.73	2.42
1992	29.93	9.98	2.56
1993	28.20	10.71	2.93
1994	26.92	11.38	2.87
1995	25.28	11.84	2.94
1996	24.24	11.83	2.74
1997	24.15	12.22	2.70
1998	23.64	12.66	2.77
1999	23.24	13.08	2.76
2000	23.35	13.48	2.70
2001	24.87	16.66	3.84
2002	26.47	17.74	4.11
2003	28.09	18.37	4.22
2004	29.33	18.18	4.37
2005	28.72	17.25	4.13
2006	29.93	16.81	4.13
2007	29.57	16.38	3.84
2008	29.91	15.77	3.82

Note: Figures for before 2001 are based on a cash basis of recording, in which the time assigned to flows is when cash is received or disbursed. Figures 2001 and after are based on an accrual basis of recording, in which the time assigned to flows is when

Source: Compiled by Earth Policy Institute from International Monetary Fund (IMF), *Government Finance Statistics*, electronic database, at www.imfstatistics.org/gfs, updated December 2010.

This is part of a supporting dataset for Lester R. Brown, **World on the Edge: How to Prevent Environmental and Economic Collapse** (New York: W.W. Norton & Company, 2011). For more information and a free download of the book, see Earth Policy Institute online at www.earth-policy.org.

U.S. Government Spending on Defense, Health, and Education, 1990-2008



Source: IMF

Undernourishment in the World, 1969-2010

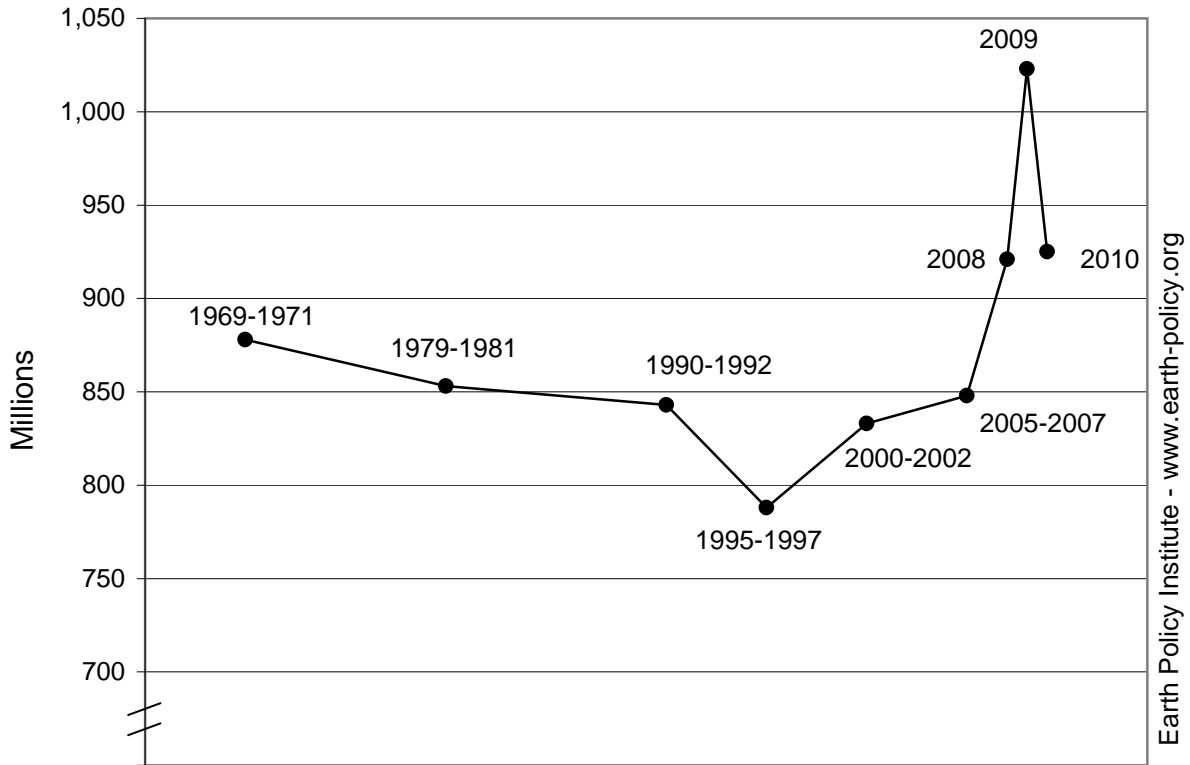
Year(s)	Number of Undernourished People Millions
1969 - 1971	878
1979 - 1981	853
1990 - 1992	843
1995 - 1997	788
2000 - 2002	833
2005 - 2007	848
2008	921
2009	1,023
2010	925

Note: 2010 is a projection by FAO.

Source: Compiled by Earth Policy Institute (EPI) with data for 1969-2007 from U.N. Food and Agriculture Organization (FAO), "Hunger," at www.fao.org/hunger/en, viewed 1 November 2010; data for 2008 from David Dawe, FAO, e-mail to J. Matthew Roney, EPI, 2 November 2010; data for 2009 and 2010 from FAO, "Hunger: Graphics," at www.fao.org/hunger/hunger_graphics/en, viewed 1 November 2010.

This is part of a supporting dataset for Lester R. Brown, **World on the Edge: How to Prevent Environmental and Economic Collapse** (New York: W.W. Norton & Company, 2011). For more information and a free download of the book, see Earth Policy Institute on-line at www.earth-policy.org.

Number of Undernourished People in the World, 1969-2010



Source: EPI from FAO

Undernourishment in the World and in Selected Groups and Regions, 2010

Group or Region	Undernourished People in 2010 Millions	Share of Population Percent
Developed Countries	19	2
Developing Countries	907	16
Asia and the Pacific	578	16
Latin America and the Caribbean	53	9
Near East and North Africa	37	8
Sub-Saharan Africa	239	30
World	925	13

Notes: Data are projections; columns do not add to totals due to rounding.

Source: Compiled by Earth Policy Institute from U.N. Food and Agriculture Organization (FAO), "Global Hunger Declining, but Still Unacceptably High," policy brief (Rome: September 2010); share of population calculated using U.N. Population Division, *World Population Prospects: The 2008 Revision Population Database*, at <http://esa.un.unpp>, updated 11 March 2009.

This is part of a supporting dataset for Lester R. Brown, **World on the Edge: How to Prevent Environmental and Economic Collapse** (New York: W.W. Norton & Company, 2011). For more information and a free download of the book, see Earth Policy Institute on-line at www.earth-policy.org.

World Monthly Food Price Indices, January 1990 – January 2011

Month	Meat	Dairy	Grains	Oils	Sugar	Total Food
			2002-2004 = 100			
Jan-90	108.1	93.1	106.5	72.5	201.5	106.9
Feb-90	113.1	90.8	104.2	72.5	207.9	108.0
Mar-90	115.4	72.7	102.6	74.3	218.0	106.3
Apr-90	127.5	84.3	105.5	71.8	216.3	112.8
May-90	127.4	69.1	105.4	74.0	207.2	109.8
Jun-90	127.9	69.1	103.1	71.3	184.0	107.3
Jul-90	126.3	69.1	97.1	71.2	170.1	104.1
Aug-90	123.8	65.1	93.3	73.7	155.1	100.9
Sep-90	131.5	67.3	87.7	72.9	157.1	102.4
Oct-90	130.0	68.7	88.8	74.5	139.3	101.4
Nov-90	127.0	69.7	88.1	78.3	142.9	101.0
Dec-90	130.0	79.1	88.8	80.5	138.2	103.9
Jan-91	128.0	82.5	90.3	79.8	124.9	103.1
Feb-91	133.9	81.8	92.0	77.9	120.8	104.9
Mar-91	126.6	80.1	94.9	78.3	129.7	103.6
Apr-91	122.2	75.1	96.4	76.1	120.8	100.7
May-91	123.3	73.9	95.3	75.1	107.6	99.5
Jun-91	121.8	75.8	94.4	75.4	130.6	100.7
Jul-91	121.4	70.4	93.5	77.6	146.3	100.9
Aug-91	120.2	72.8	97.8	79.3	134.2	101.4
Sep-91	123.1	79.3	98.7	79.1	131.8	103.5
Oct-91	126.2	85.4	102.0	83.2	129.4	106.9
Nov-91	131.0	88.9	102.3	83.6	122.9	108.9
Dec-91	127.1	88.9	105.5	84.3	127.7	108.8
Jan-92	125.6	92.0	107.7	84.8	118.1	108.8
Feb-92	129.6	92.0	111.1	82.9	111.3	110.4
Mar-92	124.2	91.3	110.8	85.9	116.6	109.1
Apr-92	123.5	91.3	105.7	85.5	134.2	108.6
May-92	125.3	94.9	104.5	86.0	136.1	109.8
Jun-92	126.8	100.0	103.7	87.3	147.0	111.9
Jul-92	125.7	100.9	98.9	82.7	146.3	109.7
Aug-92	126.6	98.8	94.2	80.8	139.5	107.6
Sep-92	124.5	101.6	97.7	82.8	132.1	108.0
Oct-92	122.8	95.9	97.6	82.9	123.6	105.9
Nov-92	128.0	93.6	98.8	85.5	121.6	107.8
Dec-92	119.9	92.7	97.6	84.0	115.7	103.9
Jan-93	121.9	92.5	98.7	85.2	116.9	105.1
Feb-93	121.4	93.7	97.4	85.0	121.5	105.1
Mar-93	121.2	92.5	97.2	83.6	150.7	106.7
Apr-93	117.7	91.0	96.4	83.2	158.2	105.5
May-93	119.0	89.8	93.3	82.4	167.9	105.5
Jun-93	119.7	89.9	88.8	81.8	147.4	102.9
Jul-93	118.8	86.4	94.0	85.7	137.4	103.3
Aug-93	114.9	83.3	95.5	84.5	132.5	101.3
Sep-93	116.2	78.6	98.4	84.2	135.4	101.9
Oct-93	117.7	71.7	104.1	83.5	146.0	103.5
Nov-93	116.7	72.1	113.2	90.2	143.6	106.5
Dec-93	111.7	73.1	116.5	101.9	149.3	107.9
Jan-94	112.9	79.4	115.9	102.8	146.2	109.1
Feb-94	113.4	79.3	113.3	97.6	153.5	108.3
Mar-94	112.1	80.2	108.6	98.8	166.6	107.8
Apr-94	111.3	73.4	105.7	101.7	156.2	105.3
May-94	117.7	73.4	104.3	107.2	164.3	108.5
Jun-94	114.5	78.0	101.6	107.8	171.0	108.0
Jul-94	114.7	78.7	94.5	105.8	167.0	105.7
Aug-94	117.2	80.4	96.6	114.6	171.7	109.0
Sep-94	117.1	86.6	101.5	125.8	178.7	113.4
Oct-94	116.9	90.3	103.7	123.4	180.9	114.4
Nov-94	119.0	92.2	102.6	137.5	197.8	118.4

Dec-94	113.3	95.5	105.3	138.2	208.2	118.5
Jan-95	111.4	103.0	105.8	129.8	209.4	118.1
Feb-95	118.8	106.2	104.9	128.9	204.5	120.5
Mar-95	121.0	107.2	104.3	130.8	207.0	121.8
Apr-95	117.2	106.3	105.2	121.5	194.4	118.3
May-95	115.8	106.5	109.6	119.5	191.9	118.6
Jun-95	113.0	106.5	116.7	124.8	198.9	120.8
Jul-95	119.2	112.7	124.9	129.9	192.8	126.5
Aug-95	118.4	112.7	122.3	124.9	184.2	124.2
Sep-95	123.1	112.8	128.0	120.3	165.9	125.4
Oct-95	124.9	113.9	135.6	125.8	168.0	129.2
Nov-95	121.5	113.9	135.8	124.5	170.0	128.0
Dec-95	116.9	113.4	139.1	119.2	174.7	126.8
Jan-96	124.1	113.3	140.1	112.3	177.8	128.8
Feb-96	123.2	113.0	143.8	108.8	181.8	129.3
Mar-96	126.8	111.5	146.3	107.7	183.2	130.9
Apr-96	124.7	111.3	160.1	116.2	170.0	134.1
May-96	130.7	108.5	167.7	116.6	161.6	137.2
Jun-96	130.0	108.8	158.5	110.2	172.7	134.5
Jul-96	129.7	109.0	153.1	106.5	181.8	133.1
Aug-96	134.0	108.2	144.7	110.8	175.5	132.3
Sep-96	133.3	107.6	126.3	114.1	169.1	127.0
Oct-96	130.0	108.5	119.8	109.6	157.8	122.8
Nov-96	127.9	106.3	113.9	110.6	152.1	119.8
Dec-96	126.6	106.6	114.4	111.0	152.4	119.6
Jan-97	121.6	106.8	114.6	112.5	151.7	118.1
Feb-97	125.1	105.7	115.5	113.3	153.4	119.6
Mar-97	130.0	105.3	118.9	111.4	157.7	122.2
Apr-97	129.8	103.9	119.1	111.9	160.4	122.2
May-97	131.6	104.3	115.6	112.6	158.1	121.9
Jun-97	125.7	103.6	109.4	109.6	162.2	117.9
Jul-97	123.8	102.6	104.8	104.8	159.2	115.0
Aug-97	123.0	102.4	110.4	104.7	166.0	116.6
Sep-97	120.3	104.4	109.6	108.7	160.8	116.0
Oct-97	118.8	107.1	110.8	116.9	161.9	117.5
Nov-97	118.5	107.6	108.7	123.3	170.5	118.4
Dec-97	109.9	107.7	107.5	120.4	175.0	115.1
Jan-98	107.2	107.6	106.1	124.6	163.9	113.5
Feb-98	108.3	105.6	106.1	127.3	152.1	113.1
Mar-98	109.3	102.6	106.8	131.0	139.6	112.7
Apr-98	108.2	102.2	102.9	133.0	137.5	111.4
May-98	104.1	100.2	101.9	139.3	131.0	109.8
Jun-98	104.8	98.7	100.1	129.2	114.9	106.7
Jul-98	100.8	98.5	97.4	129.3	122.6	105.1
Aug-98	99.5	98.7	91.7	128.2	120.3	102.8
Sep-98	99.3	95.9	91.5	130.1	102.6	101.2
Oct-98	99.3	92.9	97.9	130.1	105.9	102.7
Nov-98	98.1	92.9	98.7	130.2	114.4	103.1
Dec-98	99.5	93.1	96.6	126.7	114.6	102.6
Jan-99	97.7	93.0	97.1	119.3	115.1	101.1
Feb-99	98.1	91.8	93.4	105.9	96.8	96.8
Mar-99	98.4	90.7	93.7	96.5	85.4	94.6
Apr-99	95.9	85.8	91.5	100.5	76.9	92.3
May-99	96.1	84.9	90.1	96.8	81.6	91.7
Jun-99	96.7	84.6	91.3	86.6	85.6	91.0
Jul-99	97.8	83.1	87.9	77.9	76.3	88.3
Aug-99	100.3	83.1	90.4	83.5	81.6	91.0
Sep-99	98.7	83.8	89.5	86.0	94.6	91.6
Oct-99	98.3	84.0	87.0	84.5	96.1	90.7
Nov-99	98.9	84.7	86.5	81.9	92.2	90.2
Dec-99	96.5	86.3	84.7	79.4	85.3	88.4
Jan-00	93.3	88.8	87.1	77.5	79.6	87.6
Feb-00	98.5	89.2	88.2	73.7	75.1	89.0
Mar-00	99.5	88.6	86.7	75.2	72.9	88.8

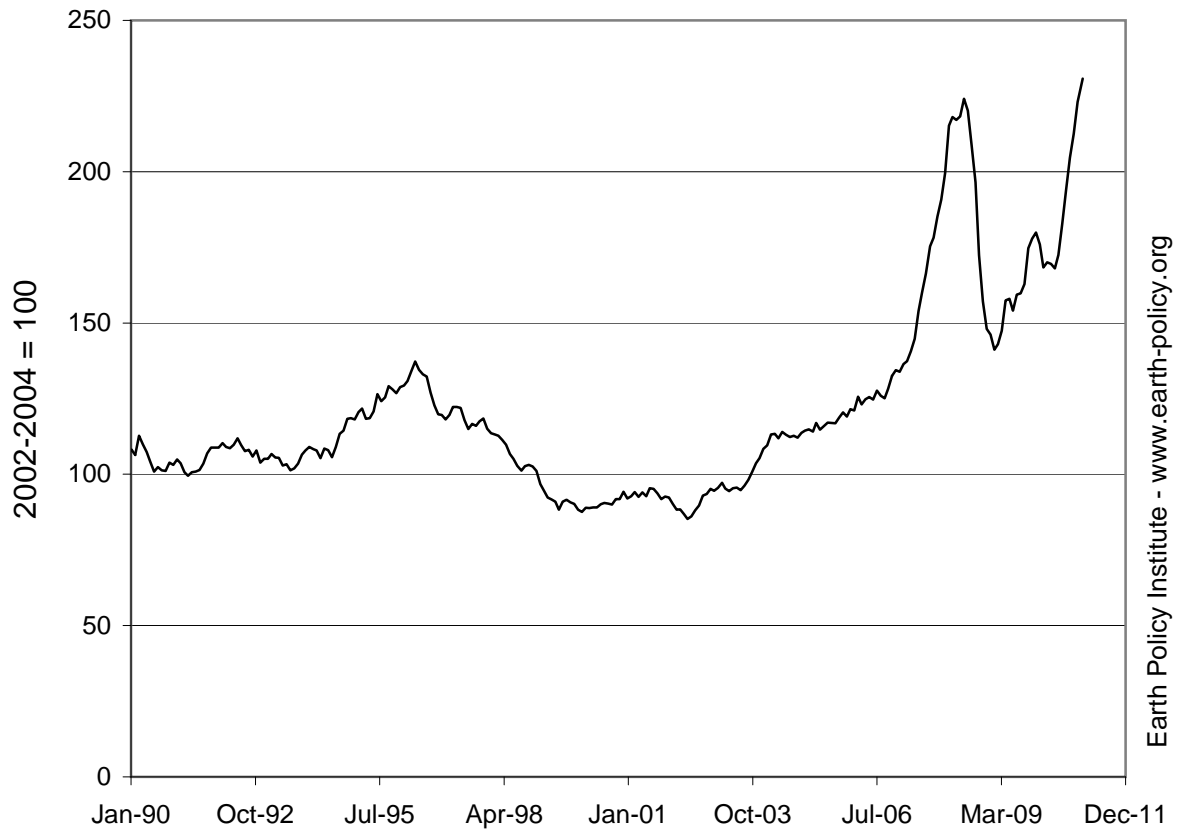
Apr-00	96.9	89.0	86.1	77.3	85.4	89.0
May-00	96.8	89.7	86.3	70.0	98.1	89.1
Jun-00	97.4	93.9	82.5	67.4	118.8	90.1
Jul-00	96.7	97.2	78.6	67.0	136.7	90.5
Aug-00	94.7	97.9	77.8	65.3	148.1	90.3
Sep-00	93.4	100.2	80.8	60.7	142.3	90.0
Oct-00	92.7	102.9	84.9	58.3	152.5	91.7
Nov-00	93.0	103.6	86.2	60.3	140.9	91.7
Dec-00	96.7	104.4	89.4	61.0	142.2	94.2
Jan-01	90.1	103.9	89.3	59.9	146.5	92.0
Feb-01	96.0	103.5	87.7	57.8	140.1	92.8
Mar-01	100.7	104.7	86.6	60.8	131.6	94.1
Apr-01	99.4	104.9	84.3	60.4	124.1	92.5
May-01	100.1	109.2	84.3	58.2	136.0	94.0
Jun-01	97.0	109.8	83.6	61.8	128.3	92.8
Jul-01	96.6	110.6	87.1	75.4	124.8	95.4
Aug-01	97.2	109.6	86.7	79.6	115.1	95.2
Sep-01	97.9	109.0	85.8	72.9	108.4	93.7
Oct-01	95.8	110.7	85.3	69.4	96.4	91.8
Nov-01	93.8	107.3	86.6	75.7	108.9	92.6
Dec-01	93.4	101.5	87.0	79.2	111.1	92.3
Jan-02	91.4	94.8	87.1	77.2	110.5	90.2
Feb-02	92.1	94.8	85.3	74.8	92.9	88.3
Mar-02	94.4	91.2	84.5	74.5	95.0	88.4
Apr-02	91.2	88.2	82.5	76.9	97.7	86.8
May-02	89.6	80.7	84.6	80.9	86.2	85.3
Jun-02	90.1	76.3	87.3	87.8	81.6	86.1
Jul-02	90.7	72.7	93.5	88.8	90.6	88.1
Aug-02	88.3	71.7	100.3	93.9	89.3	89.7
Sep-02	88.2	73.9	110.9	90.0	98.8	93.0
Oct-02	86.3	75.8	110.0	93.4	106.6	93.4
Nov-02	86.8	80.5	107.5	101.5	111.1	95.2
Dec-02	85.5	86.4	101.3	104.4	112.8	94.6
Jan-03	89.1	89.3	98.5	102.0	116.2	95.5
Feb-03	91.2	92.7	98.5	99.0	127.7	97.2
Mar-03	91.3	93.8	95.8	95.0	116.8	95.3
Apr-03	91.2	92.0	95.5	95.6	110.0	94.5
May-03	93.2	91.7	97.4	97.8	101.7	95.4
Jun-03	96.0	91.6	95.7	99.6	95.4	95.6
Jul-03	96.6	92.7	92.7	95.2	97.1	94.7
Aug-03	97.7	93.6	97.6	92.7	96.9	96.2
Sep-03	102.8	96.5	97.5	96.9	84.9	98.2
Oct-03	102.7	100.6	98.4	109.2	84.6	100.8
Nov-03	104.5	102.4	103.6	111.4	86.3	103.6
Dec-03	104.9	104.5	105.4	115.2	89.2	105.3
Jan-04	112.2	106.8	108.0	115.4	82.4	108.4
Feb-04	107.8	113.0	110.6	121.4	82.9	109.6
Mar-04	111.9	114.7	114.7	122.8	91.6	113.2
Apr-04	109.1	115.7	117.6	123.2	93.3	113.4
May-04	107.9	119.1	115.3	117.8	90.0	111.9
Jun-04	116.9	124.2	111.6	106.9	98.3	114.0
Jul-04	116.9	127.4	103.0	105.8	112.3	113.0
Aug-04	117.4	127.7	100.5	106.7	107.5	112.3
Sep-04	116.7	128.8	101.6	107.3	109.1	112.8
Oct-04	113.6	129.6	100.6	105.7	119.9	112.1
Nov-04	116.3	131.8	102.0	107.2	115.8	113.7
Dec-04	117.4	132.9	103.0	105.7	117.1	114.4
Jan-05	117.8	133.6	104.0	101.5	123.7	114.8
Feb-05	116.3	134.3	102.4	99.8	129.2	114.1
Mar-05	119.7	135.0	105.0	107.5	126.0	117.0
Apr-05	119.1	133.6	100.6	105.4	121.9	114.8
May-05	123.6	134.2	99.7	103.8	121.8	115.9
Jun-05	123.8	133.9	101.7	104.6	128.4	117.1
Jul-05	120.5	135.1	102.9	103.8	136.8	117.0

Aug-05	120.3	137.3	101.8	100.7	141.0	116.8
Sep-05	121.3	138.0	104.6	102.6	146.3	118.7
Oct-05	120.2	137.6	107.0	107.3	157.8	120.4
Nov-05	119.0	136.7	104.6	105.0	161.5	119.1
Dec-05	120.3	134.9	106.9	101.8	189.4	121.5
Jan-06	113.7	130.3	107.7	101.7	223.5	121.1
Feb-06	116.5	130.5	111.4	103.4	254.6	125.6
Mar-06	113.6	128.0	110.0	103.6	244.7	123.1
Apr-06	116.7	125.4	112.0	105.3	248.2	124.8
May-06	116.5	124.9	116.3	108.3	238.7	125.5
Jun-06	119.1	124.6	115.6	108.1	218.5	124.7
Jul-06	120.5	125.0	120.0	112.3	227.8	127.7
Aug-06	123.6	123.2	118.3	116.6	190.9	126.0
Sep-06	122.8	123.3	122.9	113.4	171.5	125.1
Oct-06	121.4	125.9	135.5	115.2	165.2	128.3
Nov-06	119.4	132.3	144.4	124.4	167.1	132.5
Dec-06	118.1	142.2	143.9	131.6	164.2	134.4
Jan-07	116.8	146.3	143.8	130.8	155.4	133.8
Feb-07	117.2	153.1	149.4	132.1	150.0	136.4
Mar-07	117.2	159.3	148.3	134.5	148.1	137.4
Apr-07	118.8	175.7	144.4	146.8	137.9	140.6
May-07	122.7	181.1	146.4	158.1	133.8	144.7
Jun-07	126.3	209.0	155.2	165.9	131.8	154.0
Jul-07	127.0	234.1	155.2	171.4	144.3	160.1
Aug-07	130.1	245.7	165.7	176.7	139.1	166.4
Sep-07	132.2	252.4	187.6	184.7	138.4	175.3
Oct-07	128.3	257.1	193.9	196.0	141.9	178.2
Nov-07	132.8	268.6	196.4	214.1	143.3	185.1
Dec-07	131.7	266.2	215.8	218.0	152.0	190.8
Jan-08	136.6	255.7	231.4	241.6	170.0	199.6
Feb-08	137.8	252.1	271.5	265.1	191.7	215.2
Mar-08	143.5	248.7	271.7	277.4	187.3	218.1
Apr-08	148.1	241.7	274.3	267.6	178.2	217.1
May-08	157.8	239.9	267.0	271.5	171.3	218.3
Jun-08	164.4	240.6	273.7	282.7	172.1	224.1
Jul-08	168.2	238.9	256.6	264.8	201.9	220.2
Aug-08	170.4	227.2	239.5	221.6	207.3	208.6
Sep-08	169.8	203.2	225.8	199.9	192.0	196.5
Oct-08	160.9	185.0	190.5	152.8	168.9	172.4
Nov-08	146.0	159.6	178.2	133.5	171.7	157.1
Dec-08	135.3	142.0	174.3	126.4	166.7	148.0
Jan-09	126.4	122.2	184.6	133.6	177.5	146.2
Feb-09	120.4	114.3	177.4	131.0	187.7	141.2
Mar-09	124.1	117.7	177.8	128.8	190.2	143.0
Apr-09	127.6	117.4	179.0	147.1	193.7	147.4
May-09	133.4	123.7	185.5	166.9	227.8	157.5
Jun-09	137.3	122.8	185.4	159.6	233.1	158.0
Jul-09	139.5	125.9	167.1	143.7	261.5	154.1
Aug-09	140.0	129.3	162.1	156.3	318.4	159.4
Sep-09	138.4	144.0	157.7	149.6	326.9	159.8
Oct-09	134.4	157.5	166.1	151.7	321.3	162.8
Nov-09	137.5	208.1	171.0	161.7	315.9	174.7
Dec-09	136.1	215.6	171.1	169.3	334.0	177.9
Jan-10	140.5	202.0	170.3	168.8	375.5	179.8
Feb-10	142.0	191.4	164.2	169.2	360.8	175.9
Mar-10	144.7	187.4	157.8	174.8	264.8	168.3
Apr-10	150.8	204.3	154.8	173.5	233.4	170.0
May-10	151.7	209.2	155.1	170.4	215.7	169.5
Jun-10	152.4	203.1	151.2	168.4	224.9	168.1
Jul-10	151.0	197.8	163.3	174.4	247.4	172.5
Aug-10	155.4	192.9	185.3	192.4	262.7	182.8
Sep-10	153.4	198.4	208.3	197.6	318.1	194.0
Oct-10	157.3	202.6	219.9	220.0	349.3	204.6
Nov-10	160.4	207.8	223.3	243.3	373.4	212.5
Dec-10	165.9	208.4	237.8	263.0	398.4	223.1
Jan-11	165.9	221.3	244.8	277.7	420.2	230.7

Source: U.N. Food and Agriculture Organization, "FAO Food Price Index," at www.fao.org/worldfoodsituation/FoodPricesIndex/en, updated February 2011.

This is part of a supporting dataset for Lester R. Brown, **World on the Edge: How to Prevent Environmental and Economic Collapse** (New York: W.W. Norton & Company, 2011). For more information and a free download of the book, see Earth Policy Institute on-line at www.earth-policy.org.

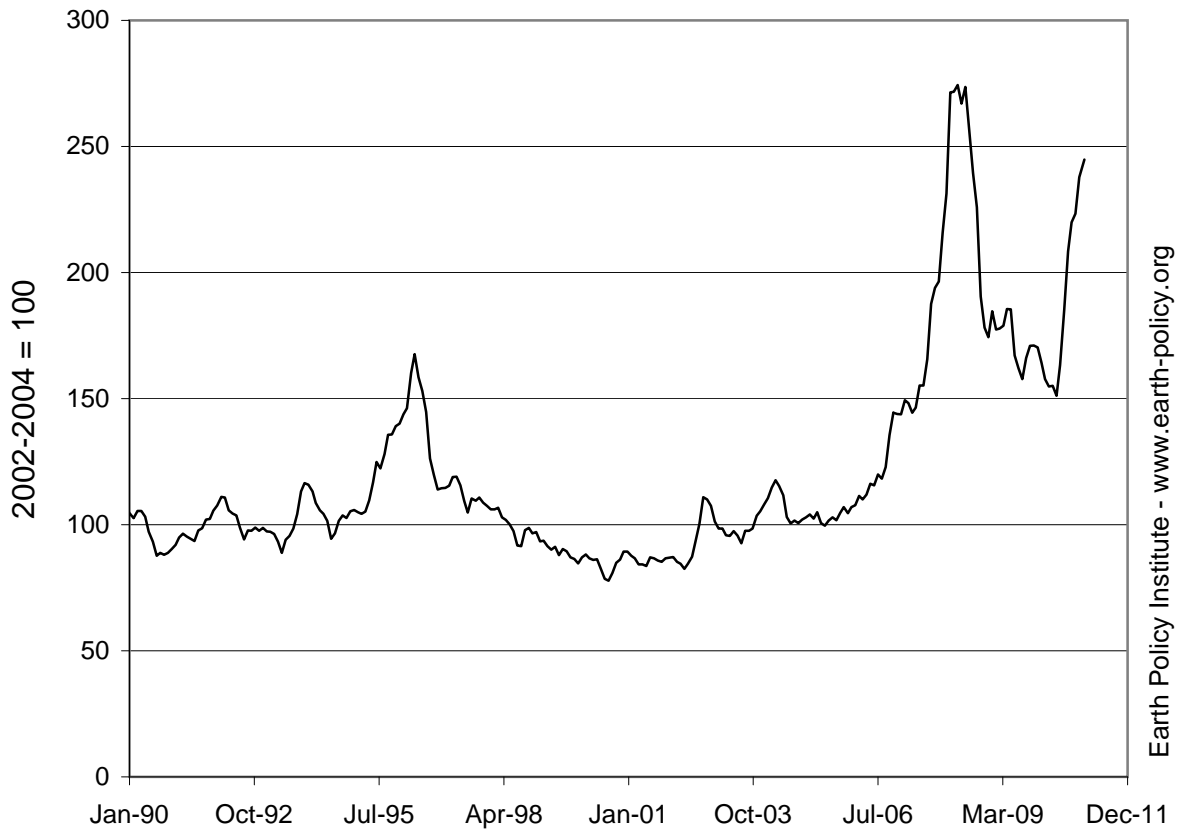
World Monthly Food Price Index, January 1990 - January 2011



Source: FAO

Earth Policy Institute - www.earth-policy.org

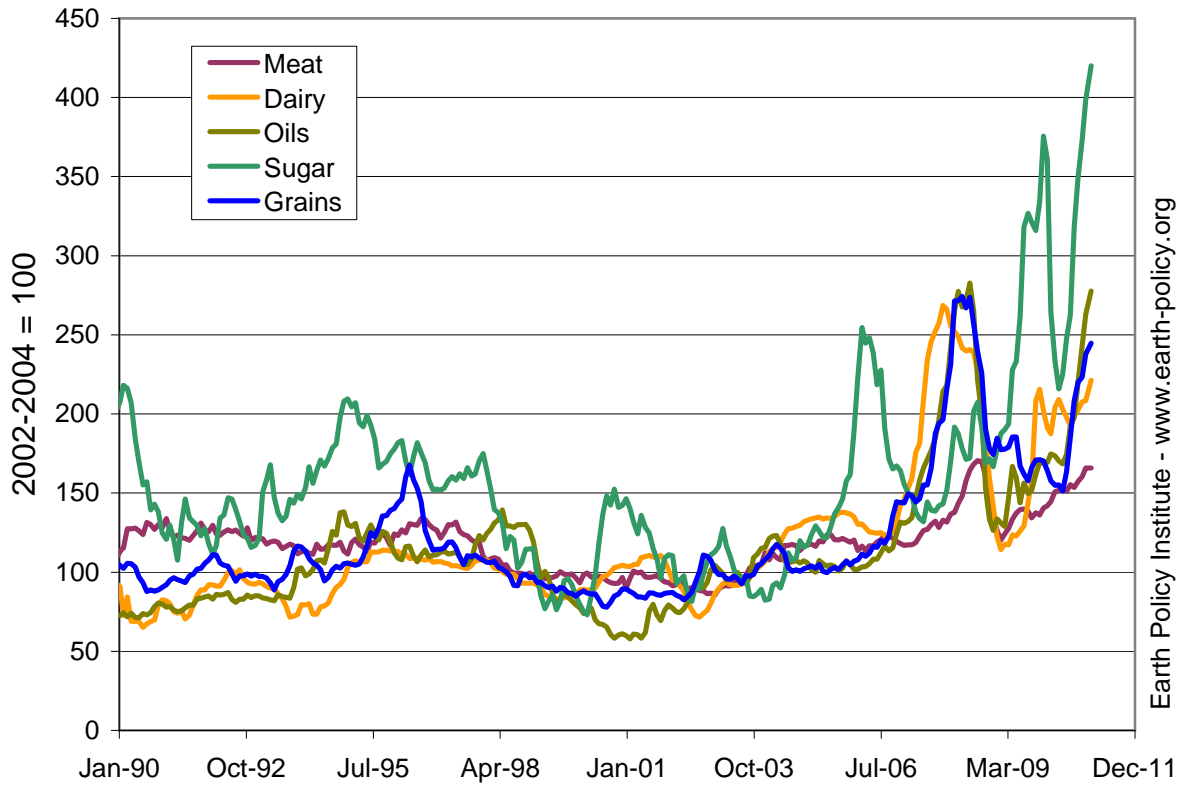
World Monthly Grains Price Index, January 1990 - January 2011



Source: FAO

Earth Policy Institute - www.earth-policy.org

World Monthly Price Indices for Meat, Dairy, Oils, Sugar, and Grains, January 1990 - January 2011



Source: FAO

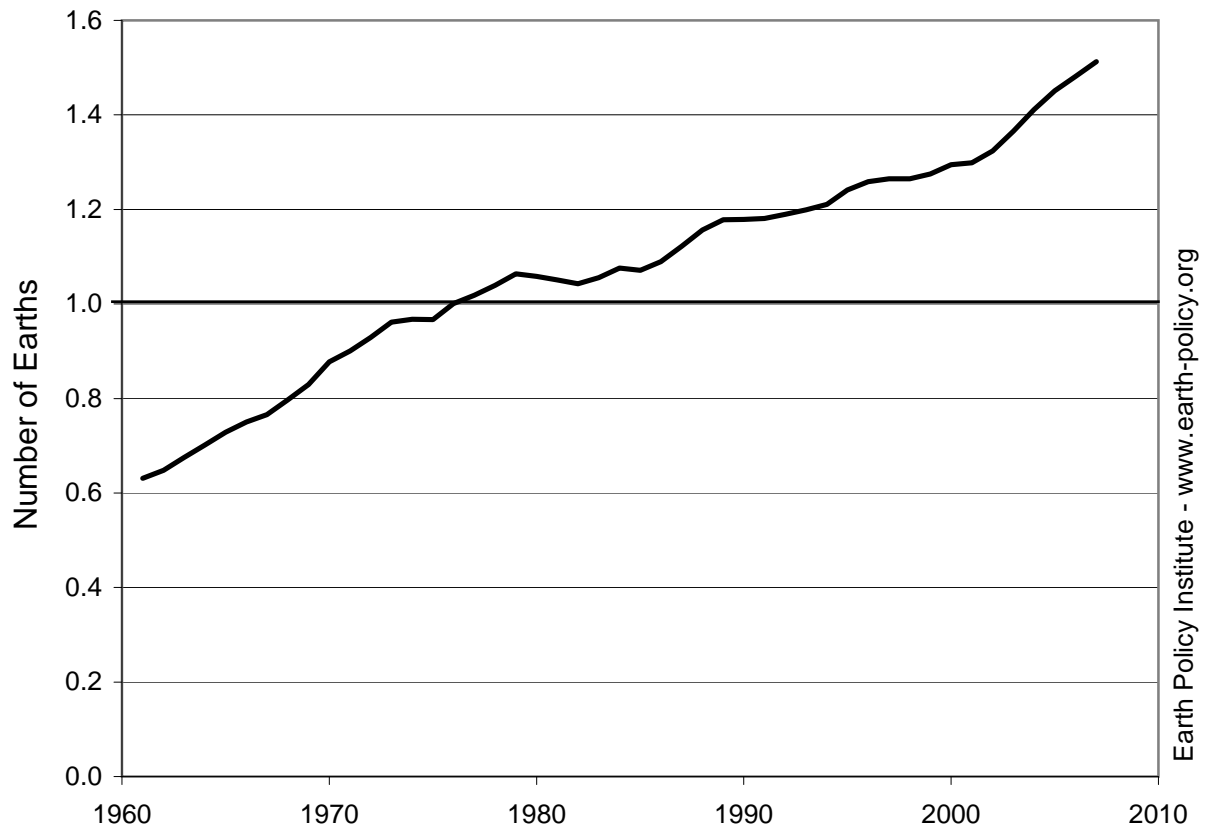
Humanity's Ecological Footprint, 1961-2007

Year	Human Demands Earths Needed
1961	0.63
1962	0.65
1963	0.67
1964	0.70
1965	0.73
1966	0.75
1967	0.77
1968	0.80
1969	0.83
1970	0.88
1971	0.90
1972	0.93
1973	0.96
1974	0.97
1975	0.97
1976	1.00
1977	1.02
1978	1.04
1979	1.06
1980	1.06
1981	1.05
1982	1.04
1983	1.06
1984	1.08
1985	1.07
1986	1.09
1987	1.12
1988	1.16
1989	1.18
1990	1.18
1991	1.18
1992	1.19
1993	1.20
1994	1.21
1995	1.24
1996	1.26
1997	1.26
1998	1.26
1999	1.28
2000	1.29
2001	1.30
2002	1.32
2003	1.37
2004	1.41
2005	1.45
2006	1.48
2007	1.51

Note: The Ecological Footprint is a measure of the total demands placed on nature by humans, where a value of 1.00 means that the world economy used the equivalent of what the Earth can sustainably provide in a year (this threshold was reached in 1976). As of 2007, we are using the equivalent of 1.51 Earths—in other words, exceeding what nature can provide by half.

Source: Bree Barbeau, Global Footprint Network (GFN), e-mail to J. Matthew Roney, Earth Policy Institute, 10 November 2010. More information about the Ecological Footprint concept at the GFN Web site, www.footprintnetwork.org.

Humanity's Ecological Footprint, 1961-2007



Source: Global Footprint Network