

## World on the Edge - Population, Health, and Society Data - Demographics

### [World Population, 1950-2008](#)

GRAPH: World Population, 1950-2008

### [World Population, 1950-2008, with Projections to 2050](#)

GRAPH: World Population, 1950-2008, with Projections to 2050

### [Populations of United States and Pakistan, 1950-2008](#)

GRAPH: Population of United States and Pakistan, 1950-2008

### [Life Expectancy for the World and Selected Groups and Regions, 1950-2005, with Projection to 2050](#)

GRAPH: Life Expectancy for the World, 1950-2005, with Projection to 2050

GRAPH: Life Expectancy for Africa, 1950-2005, with Projection to 2050

GRAPH: Life Expectancy for Sub-Saharan Africa, 1950-2005, with Projection to 2050

GRAPH: Life Expectancy for Asia, 1950-2005, with Projection to 2050

GRAPH: Life Expectancy for Top 20 Failing States, 1950-2005, with Projection to 2050

### [Demographic Indicators for Top Failing States, 2010](#)

### [Education and Total Fertility Rates for Top and Bottom Countries Sorted by Primary School Enrollment](#)

### [Female Education, Literacy, and Total Fertility Rates, Latest Year](#)

GRAPH: Female Secondary Education and Total Fertility Rates

### [Livestock and Human Populations in Africa, 1961-2008](#)

GRAPH: Livestock and Human Populations in Africa, 1961-2008

### [Livestock and Human Populations in Nigeria, 1961-2008](#)

GRAPH: Livestock and Human Populations in Nigeria, 1961-2008

### [Livestock and Human Populations in Pakistan, 1961-2008](#)

GRAPH: Livestock and Human Populations in Pakistan, 1961-2008

A full listing of data for the entire book is on-line at:

[http://www.earth-policy.org/books/wote/wote\\_data](http://www.earth-policy.org/books/wote/wote_data)

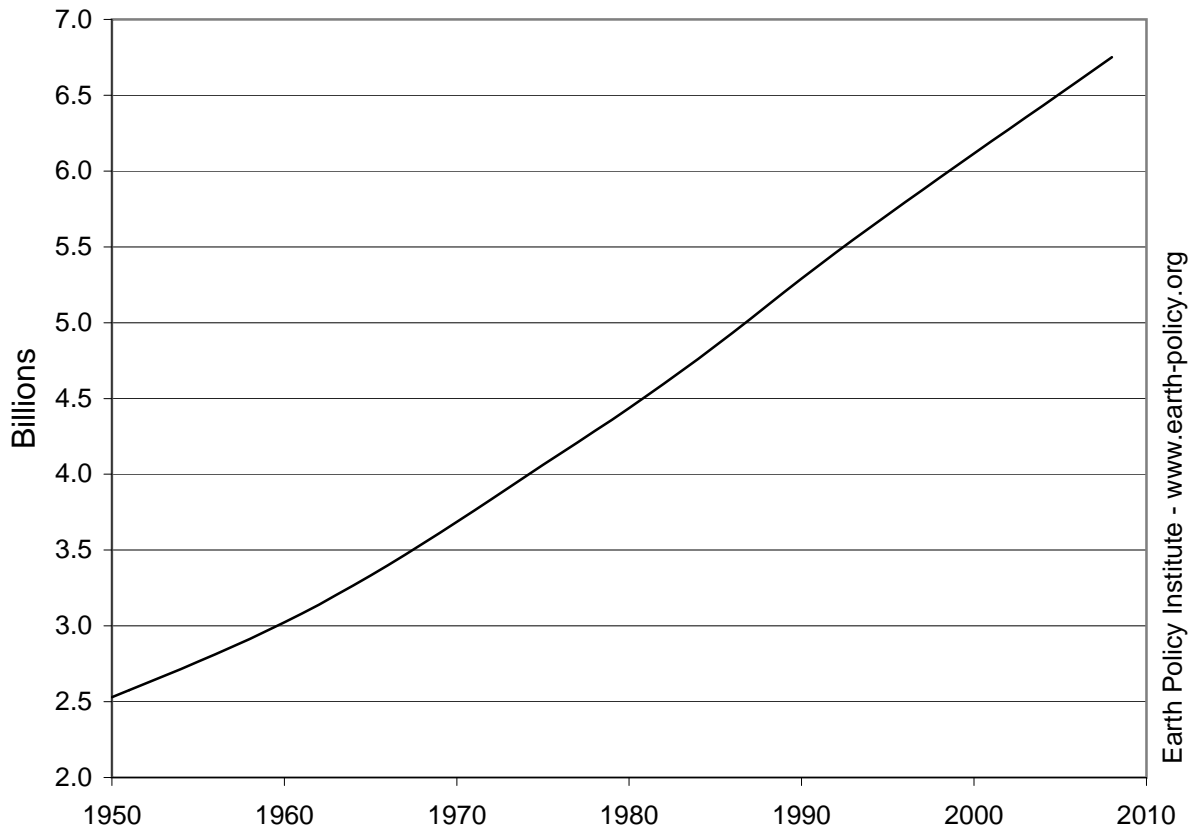
This is part of a supporting dataset for Lester R. Brown, **World on the Edge: How to Prevent Environmental and Economic Collapse** (New York: W.W. Norton & Company, 2011). For more information and a free download of the book, see Earth Policy Institute on-line at [www.earth-policy.org](http://www.earth-policy.org).

## World Population, 1950-2008

<u>Year</u>	<u>Population</u> Billions
1950	2.53
1951	2.58
1952	2.62
1953	2.67
1954	2.72
1955	2.76
1956	2.81
1957	2.86
1958	2.91
1959	2.97
1960	3.02
1961	3.08
1962	3.14
1963	3.20
1964	3.27
1965	3.33
1966	3.40
1967	3.47
1968	3.54
1969	3.61
1970	3.69
1971	3.76
1972	3.84
1973	3.91
1974	3.99
1975	4.06
1976	4.14
1977	4.21
1978	4.29
1979	4.36
1980	4.44
1981	4.52
1982	4.60
1983	4.68
1984	4.76
1985	4.85
1986	4.93
1987	5.02
1988	5.11
1989	5.20
1990	5.29
1991	5.38
1992	5.46
1993	5.55
1994	5.63
1995	5.71
1996	5.79
1997	5.88
1998	5.96
1999	6.04
2000	6.12
2001	6.19
2002	6.27
2003	6.35
2004	6.43
2005	6.51
2006	6.59
2007	6.67
2008	6.75

Source: United Nations Population Division, *World Population Prospects: The 2008 Revision Population Database*, electronic database, at <http://esa.un.org/unpp>, updated 11 March 2009.

# World Population, 1950-2008



Source: UNPop

Earth Policy Institute - [www.earth-policy.org](http://www.earth-policy.org)

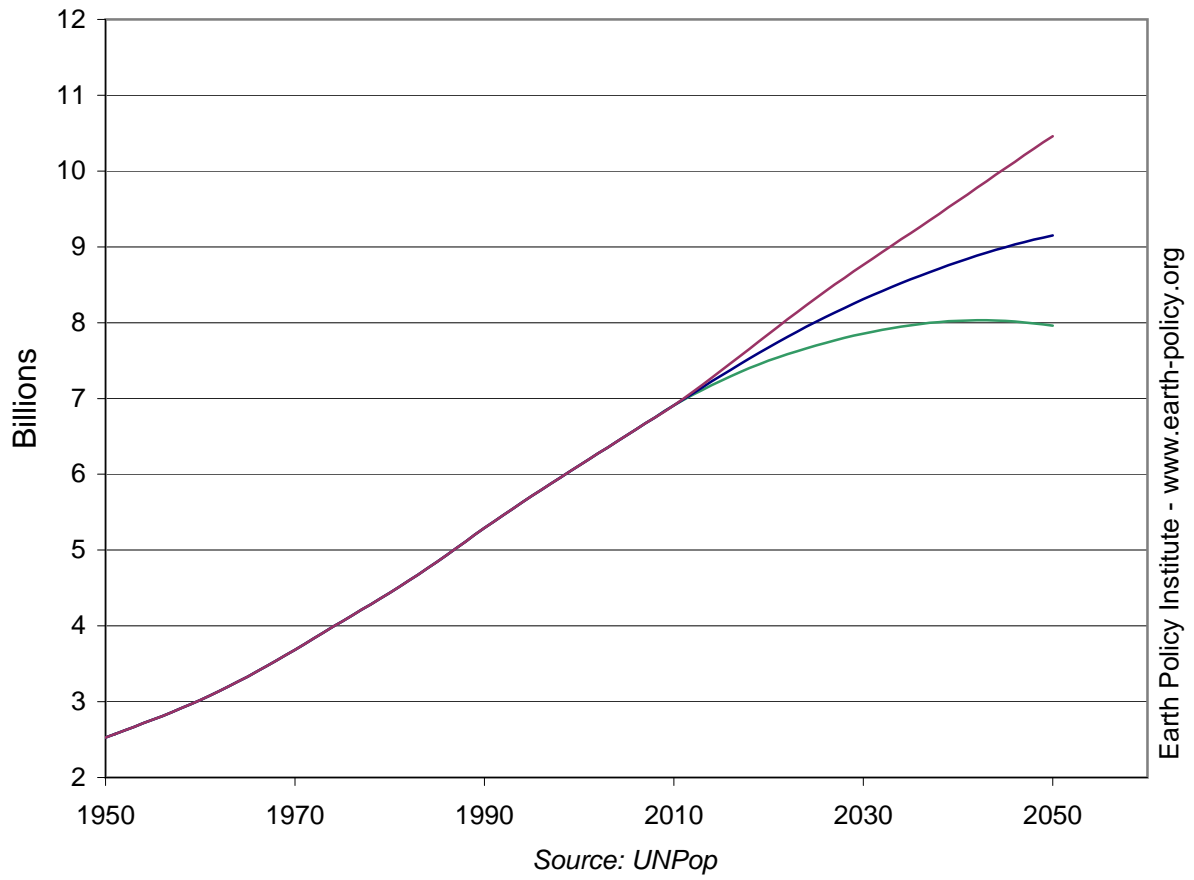
## World Population, 1950-2008, with Projections to 2050

Year	Population Billions	Population Projections			
		Year	Low	Medium	High
1950	2.5	2009	6.8	6.8	6.8
1951	2.6	2010	6.9	6.9	6.9
1952	2.6	2011	7.0	7.0	7.0
1953	2.7	2012	7.0	7.1	7.1
1954	2.7	2013	7.1	7.1	7.2
1955	2.8	2014	7.2	7.2	7.3
1956	2.8	2015	7.2	7.3	7.4
1957	2.9	2016	7.3	7.4	7.5
1958	2.9	2017	7.3	7.5	7.6
1959	3.0	2018	7.4	7.5	7.7
1960	3.0	2019	7.5	7.6	7.8
1961	3.1	2020	7.5	7.7	7.9
1962	3.1	2021	7.5	7.7	7.9
1963	3.2	2022	7.6	7.8	8.0
1964	3.3	2023	7.6	7.9	8.1
1965	3.3	2024	7.7	7.9	8.2
1966	3.4	2025	7.7	8.0	8.3
1967	3.5	2026	7.7	8.1	8.4
1968	3.5	2027	7.8	8.1	8.5
1969	3.6	2028	7.8	8.2	8.6
1970	3.7	2029	7.8	8.3	8.7
1971	3.8	2030	7.9	8.3	8.8
1972	3.8	2031	7.9	8.4	8.8
1973	3.9	2032	7.9	8.4	8.9
1974	4.0	2033	7.9	8.5	9.0
1975	4.1	2034	7.9	8.5	9.1
1976	4.1	2035	8.0	8.6	9.2
1977	4.2	2036	8.0	8.6	9.3
1978	4.3	2037	8.0	8.7	9.4
1979	4.4	2038	8.0	8.7	9.4
1980	4.4	2039	8.0	8.8	9.5
1981	4.5	2040	8.0	8.8	9.6
1982	4.6	2041	8.0	8.8	9.7
1983	4.7	2042	8.0	8.9	9.8
1984	4.8	2043	8.0	8.9	9.9
1985	4.8	2044	8.0	9.0	10.0
1986	4.9	2045	8.0	9.0	10.0
1987	5.0	2046	8.0	9.0	10.1
1988	5.1	2047	8.0	9.1	10.2
1989	5.2	2048	8.0	9.1	10.3
1990	5.3	2049	8.0	9.1	10.4
1991	5.4	2050	8.0	9.1	10.5
1992	5.5				
1993	5.5				
1994	5.6				
1995	5.7				
1996	5.8				
1997	5.9				
1998	6.0				
1999	6.0				
2000	6.1				
2001	6.2				
2002	6.3				
2003	6.4				
2004	6.4				
2005	6.5				
2006	6.6				
2007	6.7				
2008	6.8				

Source: United Nations Population Division, *World Population Prospects: The 2008 Revision Population Database*, electronic database, at [esa.un.org/unpp](http://esa.un.org/unpp), updated 11 March 2009.

This is part of a supporting dataset for Lester R. Brown, **World on the Edge: How to Prevent Environmental and Economic Collapse** (New York: W.W. Norton & Company, 2011). For more information and a free download of the book, see Earth Policy Institute on-line at [www.earth-policy.org](http://www.earth-policy.org).

# World Population, 1950-2008, with Projections to 2050

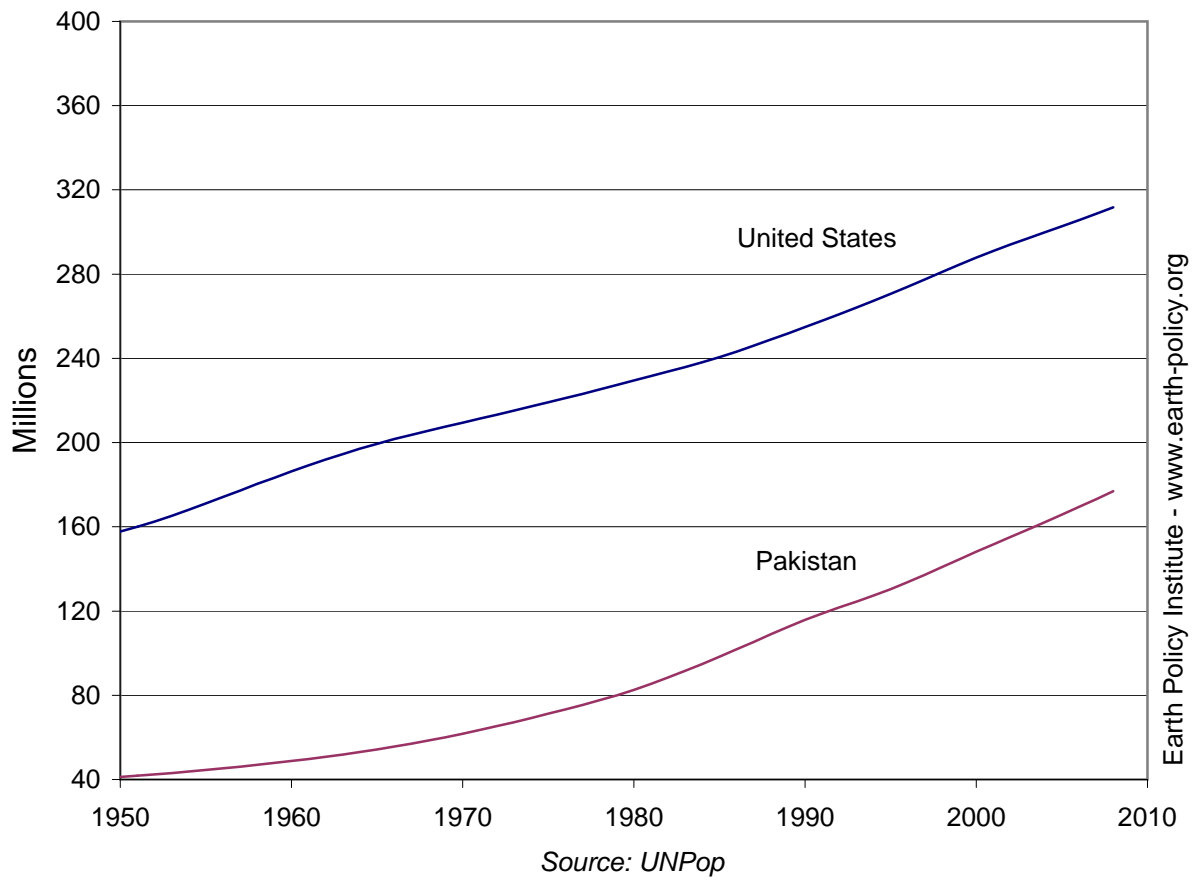


### Populations of United States and Pakistan, 1950-2008

Year	United States	Pakistan
	Millions	
1950	157.8	41.2
1951	160.0	41.8
1952	162.5	42.4
1953	165.3	43.1
1954	168.2	43.8
1955	171.2	44.5
1956	174.2	45.3
1957	177.3	46.1
1958	180.4	46.9
1959	183.4	47.8
1960	186.3	48.8
1961	189.2	49.8
1962	192.0	50.8
1963	194.6	51.9
1964	197.1	53.0
1965	199.5	54.3
1966	201.7	55.6
1967	203.7	57.0
1968	205.7	58.5
1969	207.6	60.1
1970	209.5	61.8
1971	211.4	63.5
1972	213.3	65.3
1973	215.2	67.2
1974	217.1	69.2
1975	219.1	71.2
1976	221.1	73.3
1977	223.2	75.4
1978	225.3	77.6
1979	227.4	80.0
1980	229.5	82.6
1981	231.6	85.4
1982	233.7	88.4
1983	235.9	91.6
1984	238.2	94.9
1985	240.6	98.3
1986	243.2	101.8
1987	246.0	105.4
1988	248.9	109.0
1989	251.8	112.5
1990	254.9	115.8
1991	257.9	118.8
1992	261.0	121.7
1993	264.1	124.5
1994	267.3	127.3
1995	270.6	130.4
1996	274.1	133.7
1997	277.6	137.2
1998	281.1	140.8
1999	284.5	144.5
2000	287.8	148.1
2001	291.0	151.7
2002	294.0	155.2
2003	296.9	158.7
2004	299.8	162.2
2005	302.7	165.8
2006	305.7	169.5
2007	308.7	173.2
2008	311.7	177.0

Source: U.N. Population Division, *World Population Prospects: The 2008 Revision Population Database*, at [esa.un.org/unpp](http://esa.un.org/unpp), updated 11 March 2009.

## Populations of United States and Pakistan, 1950-2008





## Life Expectancy for the World and Selected Groups and Regions, 1950-2005, with Projection to 2050

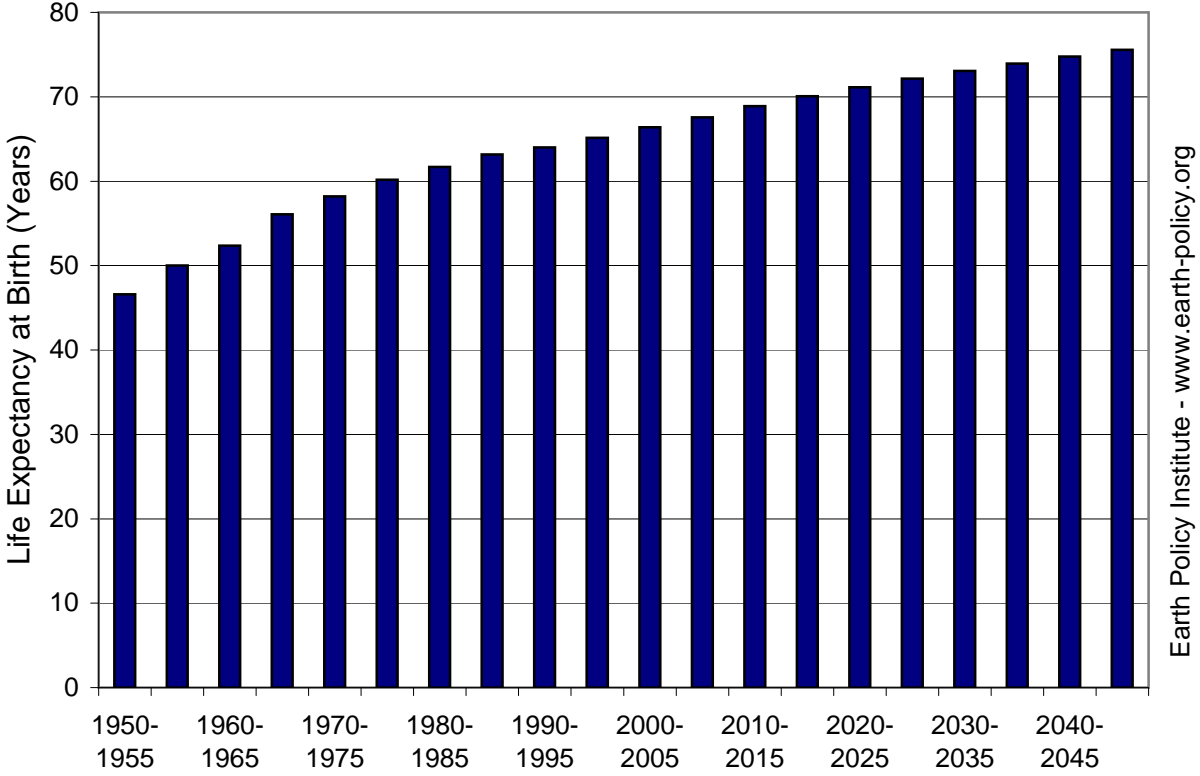
Period	Africa	Sub-Saharan Africa	Asia	Europe	Latin America & the Caribbean	U.S. & Canada	Oceania	Top 20 Failing States*	World
1950-1955	39	38	41	66	51	69	60	38	47
1955-1960	41	40	44	68	54	70	62	40	50
1960-1965	43	42	48	70	57	71	64	42	52
1965-1970	44	43	54	70	59	71	65	45	56
1970-1975	46	45	57	71	61	72	66	47	58
1975-1980	49	47	59	71	63	74	68	49	60
1980-1985	50	48	61	72	65	75	70	51	62
1985-1990	51	49	63	73	67	76	71	52	63
1990-1995	52	49	64	73	69	77	72	53	64
1995-2000	52	49	66	73	71	78	73	53	65
2000-2005	53	50	68	74	72	79	75	54	66
2005-2010	54	52	69	75	73	80	76	55	68
2010-2015	56	54	70	76	74	81	77	58	69
2015-2020	58	56	72	77	76	81	78	60	70
2020-2025	60	57	73	78	76	82	79	61	71
2025-2030	61	59	74	79	77	82	80	63	72
2030-2035	63	61	74	80	78	83	80	65	73
2035-2040	64	63	75	80	79	83	81	66	74
2040-2045	66	64	76	81	79	84	82	68	75
2045-2050	67	66	77	82	80	84	82	69	76

\* Note: The top 20 failing states, based on data from 2009, are Somalia, Chad, Sudan, Zimbabwe, the Democratic Republic of the Congo, Afghanistan, Iraq, the Central African Republic, Guinea, Pakistan, Haiti, Côte d'Ivoire, Kenya, Nigeria, Yemen, Burma, Ethiopia, East Timor, North Korea, and Niger.

Source: Compiled by Earth Policy Institute from U.N. Population Division, *World Population Prospects: The 2008 Revision Population Database*, at [esa.un.org/unpp](http://esa.un.org/unpp), updated 11 March 2009; top 20 failing states from Fund for Peace and *Foreign Policy*, "The Failed States Index," *Foreign Policy*, July/August 2010, pp. 76-79.

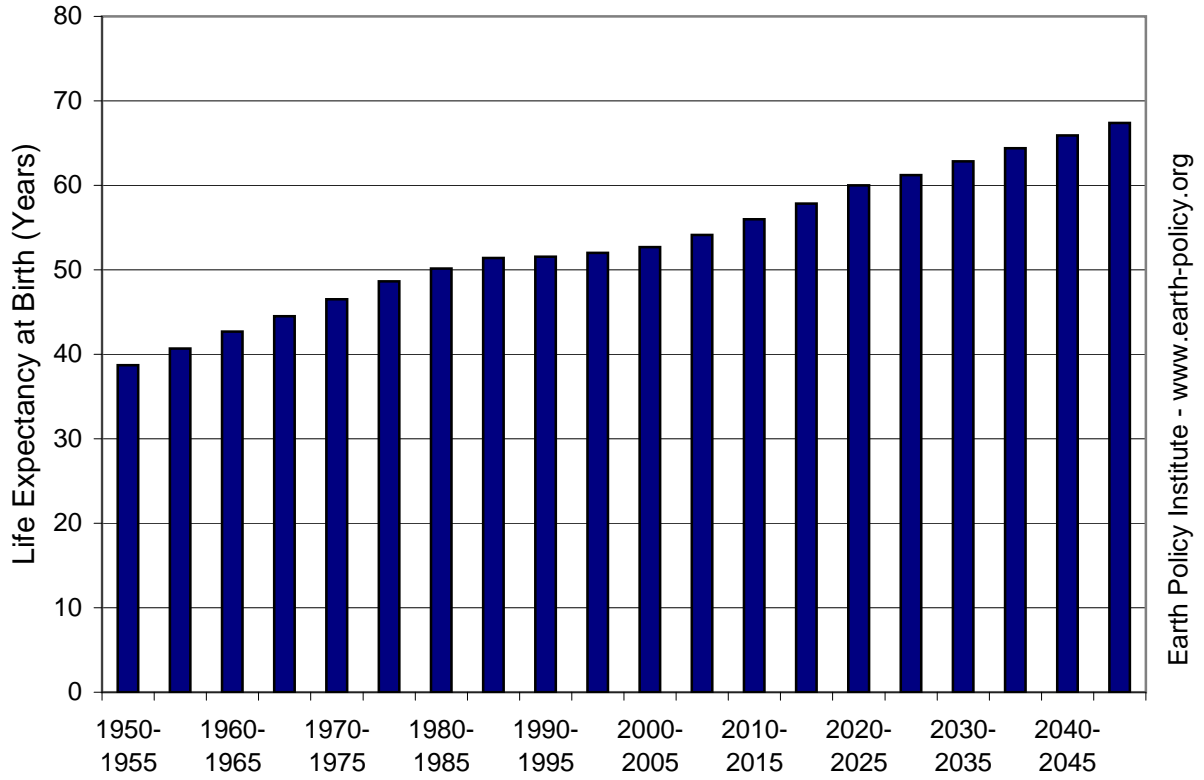
This is part of a supporting dataset for Lester R. Brown, **World on the Edge: How to Prevent Environmental and Economic Collapse** (New York: W.W. Norton & Company, 2011). For more information and a free download of the book, see Earth Policy Institute on-line at [www.earth-policy.org](http://www.earth-policy.org).

Life Expectancy for the World, 1950-2005,  
with Projection to 2050



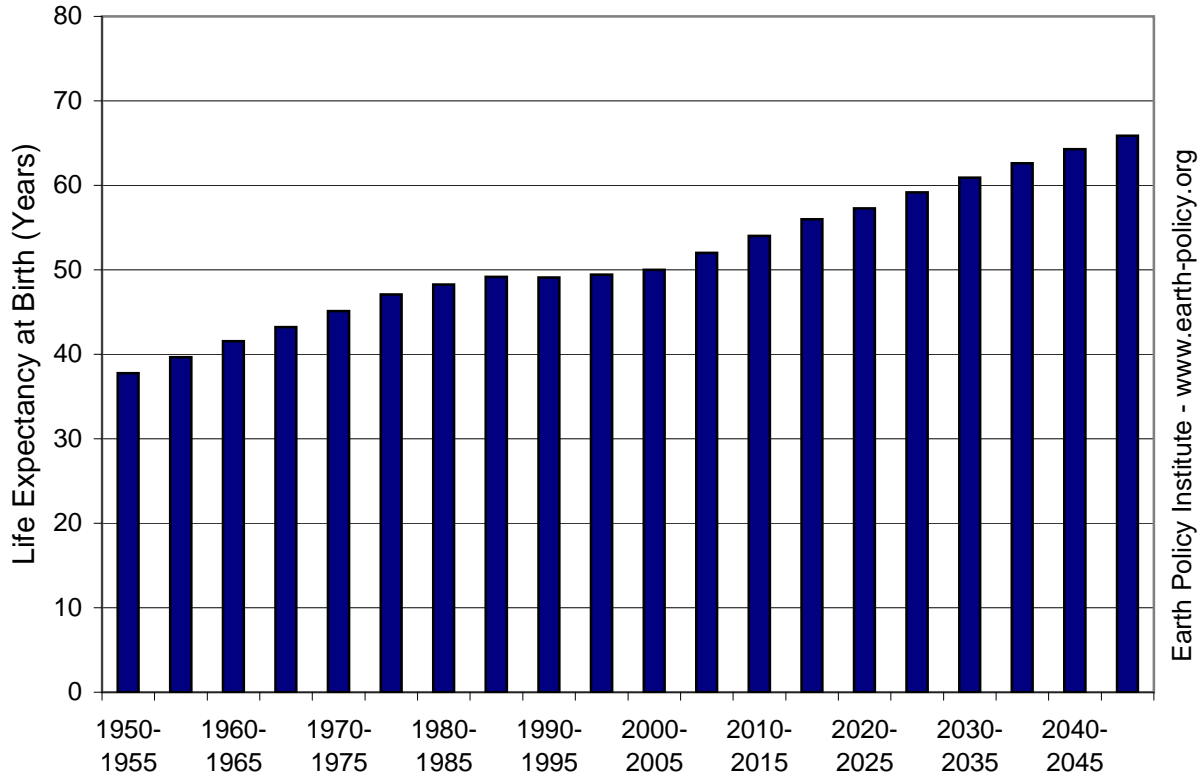
Source: UNPop

### Life Expectancy for Africa, 1950-2005, with Projection to 2050



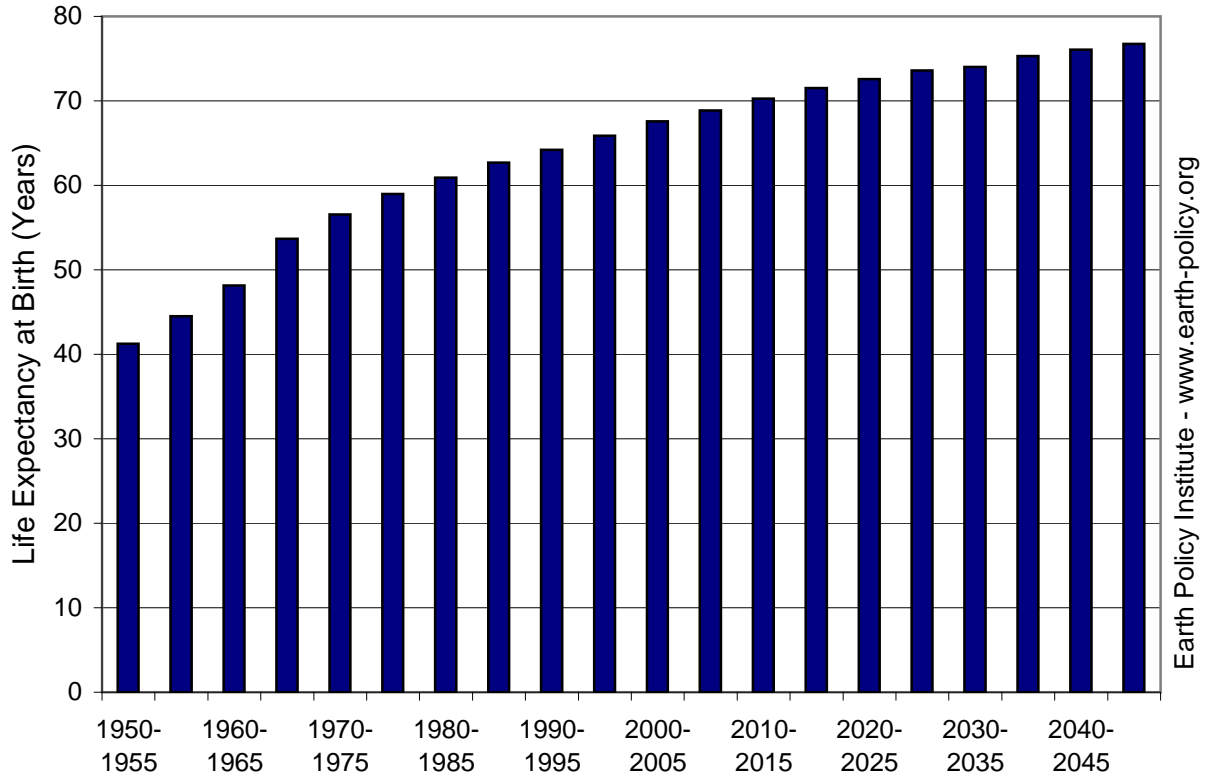
Source: UNPop

# Life Expectancy for Sub-Saharan Africa, 1950-2005, with Projection to 2050



Source: UNPop

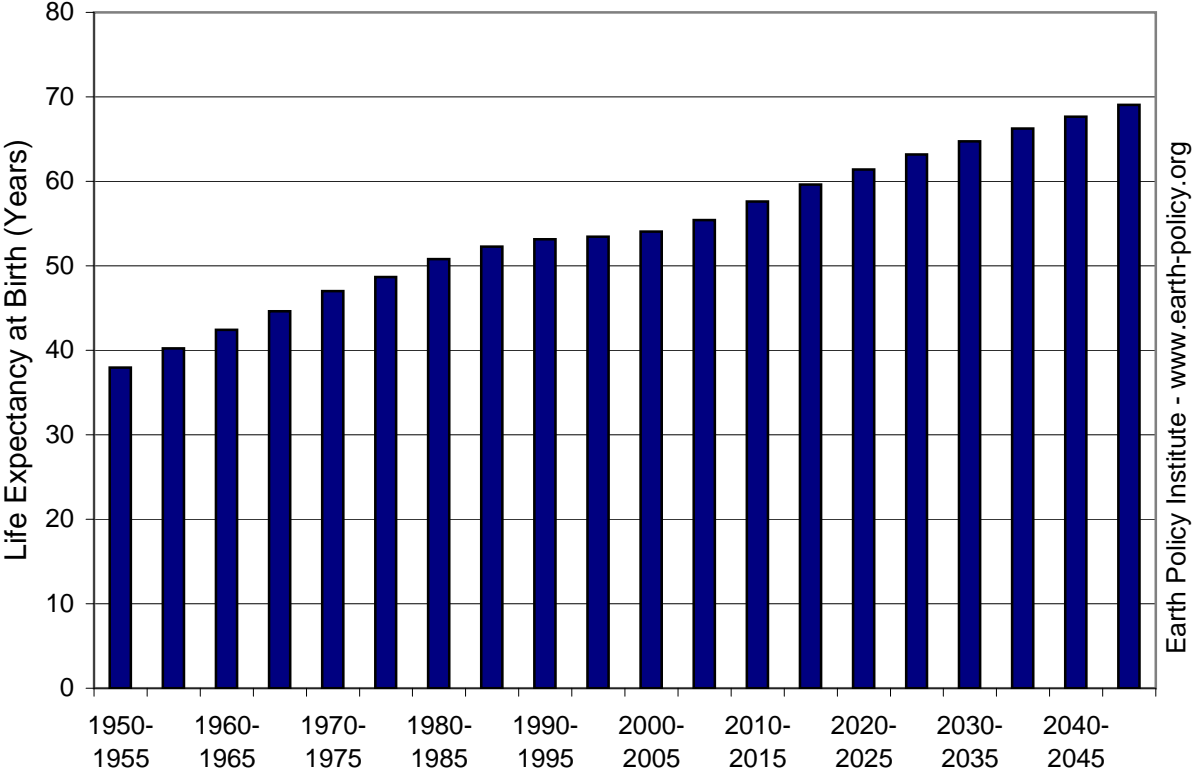
### Life Expectancy for Asia, 1950-2005, with Projection to 2050



Source: UNPop

Earth Policy Institute - [www.earth-policy.org](http://www.earth-policy.org)

# Life Expectancy for Top 20 Failing States, 1950-2005, with Projection to 2050



Source: UNPop

Earth Policy Institute - [www.earth-policy.org](http://www.earth-policy.org)

## Demographic Indicators for Top Failing States, 2010

Country	Failed State Rank (2010)*	Failed State Score (2010)*	Population (2010) Millions	Population Growth Rate (2005-2010) Percent	Total Fertility Rate (2005-2010) Average Births per Woman	Population under 15 (2010) Percent	Infant Mortality Rate (2005-2010) Deaths per Thousand Live Births	Life Expectancy at Birth (2005-2010) Years	Share Urban (2010) Percent
Somalia	1	114.3	9.4	2.3	6.4	44.9	110	49.6	37.4
Chad	2	113.3	11.5	2.8	6.2	45.6	130	48.7	27.6
Sudan	3	111.8	43.2	2.2	4.2	38.7	69	58.0	40.1
Zimbabwe	4	110.2	12.6	0.3	3.5	39.5	58	44.1	38.3
Dem. Rep. of the Congo	5	109.9	67.8	2.8	6.1	46.4	117	47.5	35.2
Afghanistan	6	109.3	29.1	3.4	6.6	45.9	157	43.8	22.6
Iraq	7	107.3	31.5	2.2	4.1	40.7	33	67.4	66.2
Central African Republic	8	106.4	4.5	1.9	4.8	40.3	105	46.9	38.9
Guinea	9	105.0	10.3	2.3	5.5	42.6	98	57.6	35.4
Pakistan	10	102.5	184.8	2.2	4.0	36.6	64	66.3	35.9
Haiti	11	101.6	10.2	1.6	3.5	35.9	62	61.2	52.1
Côte d'Ivoire	12	101.2	21.6	2.3	4.6	40.4	87	57.2	50.6
Kenya	13	100.7	40.9	2.6	5.0	42.8	64	54.2	22.2
Nigeria	14	100.2	158.3	2.3	5.3	42.4	109	47.8	49.8
Yemen	15	100.0	24.3	2.9	5.3	43.3	59	62.7	31.8
Burma	16	99.4	50.5	0.9	2.3	26.6	75	61.2	33.6
Ethiopia	17	98.8	85.0	2.6	5.4	43.2	79	55.0	16.7
Timor-Leste	18	98.2	1.2	3.3	6.5	44.7	67	60.8	28.1
North Korea	19	97.8	24.0	0.4	1.9	21.2	48	67.3	60.2
Niger	20	97.8	15.9	3.9	7.1	50.1	88	51.1	17.1

\* Note: Failed state ranks and scores for 2010 are based on 2009 data.

Source: Compiled by Earth Policy Institute with failed state ranks and scores from Fund for Peace and *Foreign Policy*, "The Failed States Index," *Foreign Policy*, July/August 2010; population, population growth, fertility, population under 15, infant mortality, and life expectancy from U.N. Population Division, *World Population Prospects: The 2008 Revision Population Database*, at [esa.un.org/unpp](http://esa.un.org/unpp), updated 11 March 2009; share urban from U.N. Population Division, *World Urbanization Prospects: The 2009 Revision Population Database*, at [esa.un.org/unpd/wup/unup](http://esa.un.org/unpd/wup/unup), updated 2010.

This is part of a supporting dataset for Lester R. Brown, **World on the Edge: How to Prevent Environmental and Economic Collapse** (New York: W.W. Norton & Company, 2011). For more information and a free download of the book, see Earth Policy Institute on-line at [www.earth-policy.org](http://www.earth-policy.org).

## Education and Total Fertility Rates for Top and Bottom Countries Sorted by Primary School Enrollment

Top 10 Countries <sup>1</sup>	Primary School Enrollment <sup>2</sup> (Latest Year)	Adult Literacy Rate <sup>3</sup> (Latest Year)	Total Fertility Rate <sup>4</sup> (2008)
	Percent	Percent	Number of Children per Woman
Japan	100.0	-	1.3
Spain	99.8	97.6	1.5
Iran	99.7	82.3	1.8
Georgia <sup>6</sup>	99.6	99.7	1.6
United Kingdom	99.6	-	1.9
Canada <sup>5</sup>	99.5	-	1.6
Sri Lanka	99.5	90.6	2.3
New Zealand	99.5	-	2.2
Greece <sup>6</sup>	99.4	97.0	1.5
Cuba <sup>6</sup>	99.3	99.8	1.5

Bottom 10 Countries <sup>1</sup>	Primary School Enrollment <sup>2</sup> (Latest Year)	Adult Literacy Rate <sup>3</sup> (Latest Year)	Total Fertility Rate <sup>4</sup> (2008)
	Percent	Percent	Number of Children per Woman
Nigeria <sup>5,6</sup>	61.4	60.1	5.7
Chad <sup>5,6</sup>	61.0	32.7	6.2
Congo	58.9	-	4.4
Côte d'Ivoire <sup>6</sup>	57.2	54.6	4.6
Niger	54.0	28.7	7.1
Equatorial Guinea <sup>6</sup>	53.5	93.0	5.3
Guinea-Bissau <sup>6</sup>	52.1	51.0	5.7
Djibouti	40.1	-	3.9
Sudan <sup>5,6</sup>	39.2	69.3	4.2
Eritrea <sup>6</sup>	35.7	65.3	4.6

### Notes:

<sup>1</sup> Rankings are based on a list of 185 countries for which primary enrollment data are available. Countries for which data are not available include Afghanistan, Burma, China, the Democratic Republic of the Congo, Haiti, North Korea, Russia, Singapore, and Somalia.

<sup>2</sup> Enrollment of the official age group for primary school as a percentage of the corresponding population.

<sup>3</sup> The percentage of population aged 15 years and over who can both read and write with understanding a short simple statement on his/her everyday life.

<sup>4</sup> The average number of children a woman would have at the end of her reproductive period, assuming her reproductive rate is constant throughout the period.

<sup>5</sup> Primary enrollment rates are UIS estimations.

<sup>6</sup> Adult literacy rates are UIS estimations.

Source: Compiled by Earth Policy Institute from UNESCO Institute for Statistics (UIS), *Data Center*, electronic database, at [stats.uis.unesco.org](http://stats.uis.unesco.org), viewed 12 November 2010; UIS, "Glossary," at [www.uis.unesco.org/glossary/index.aspx](http://www.uis.unesco.org/glossary/index.aspx), viewed 12 November 2010; UNESCO, *Education for All Global Monitoring Report 2010: Reaching the Marginalized* (Paris, 2010), statistical tables; United Nations, "Glossary," in *World Population Prospects: The 2008 Revision Population Database*, at [esa.un.org/unpp](http://esa.un.org/unpp), updated 11 March 2009.

This is part of a supporting dataset for Lester R. Brown, **World on the Edge: How to Prevent Environmental and Economic Collapse** (New York: W.W. Norton & Company, 2011). For more information and a free download of the book, see Earth Policy Institute on-line at [www.earth-policy.org](http://www.earth-policy.org).



### Female Education and Total Fertility Rates by Country, Latest Year (2003-2008)

Country	Female Primary Enrollment Percent	Female Secondary Enrollment Percent	Female Adult Literacy Percent	Total Fertility Rate Children Per Woman
Afghanistan	-	14.6	-	6.6
Albania	83.8	-	98.7	1.9
Algeria	92.9	-	63.9	2.4
Andorra	82.9	72.0	-	1.3
Angola	-	-	57.0	5.8
Anguilla	92.8	79.1	-	-
Antigua and Barbuda	86.8	87.2	99.4	-
Argentina	-	83.8	97.7	2.2
Armenia	85.6	88.7	99.4	1.7
Aruba	98.3	79.2	98.0	1.7
Australia	97.4	88.7	-	2.0
Austria	-	-	-	1.4
Azerbaijan	95.3	97.2	99.2	2.3
Bahamas	92.4	87.1	-	2.0
Bahrain	96.5	91.3	89.4	2.3
Bangladesh	86.3	42.6	49.8	2.3
Barbados	-	-	-	1.5
Belarus	95.6	88.9	99.7	1.4
Belgium	98.7	85.1	-	1.8
Belize	97.4	67.9	-	2.9
Benin	86.5	-	28.1	5.4
Bermuda	70.9	56.3	-	1.8
Bhutan	88.5	49.0	38.7	2.6
Bolivia	91.5	69.0	86.0	3.5
Bosnia and Herzegovina	88.3	-	95.9	1.2
Botswana	87.8	60.5	83.5	2.9
Brazil	93.2	85.4	90.2	1.9
British Virgin Islands	94.0	88.7	-	-
Brunei Darussalam	93.4	90.5	93.3	2.1
Bulgaria	95.8	82.3	97.9	1.5
Burkina Faso	59.4	13.1	21.6	5.9
Burma (Myanmar)	-	46.4	89.2	2.3
Burundi	99.6	-	59.9	4.6
Cambodia	86.7	31.7	70.9	2.9
Cameroon	85.6	-	67.8	4.6
Canada	-	-	-	1.6
Cape Verde	81.5	-	79.3	2.7
Cayman Islands	78.3	76.0	99.0	-
Central African Republic	56.6	7.7	41.1	4.8
Chad	-	-	21.9	6.2
Chile	94.5	86.2	98.7	1.9
China	-	-	90.5	1.8
China, Hong Kong SAR	94.7	75.8	-	1.0
China, Macao SAR	86.9	75.8	90.7	0.9
Colombia	89.2	76.7	93.4	2.4
Comoros	83.8	-	67.8	4.0
Congo	56.0	-	-	4.4
Cook Islands	94.6	83.7	-	-
Costa Rica	-	-	96.2	2.0
Côte d'Ivoire	52.0	-	44.3	4.6

Croatia	90.7	89.2	98.0	1.5
Cuba	99.3	83.3	99.8	1.5
Cyprus	98.4	96.7	96.7	1.5
Czech Republic	91.0	-	-	1.5
Dem. Rep. of the Congo	-	-	56.1	6.0
Denmark	95.9	91.7	-	1.9
Djibouti	36.9	17.0	-	3.9
Dominica	94.7	90.7	-	-
Dominican Republic	82.0	65.2	88.3	2.6
Ecuador	98.4	69.6	81.7	2.6
Egypt	91.7	-	57.8	2.9
El Salvador	94.6	57.2	81.4	2.3
Equatorial Guinea	53.0	-	89.1	5.3
Eritrea	33.2	23.1	54.5	4.6
Estonia	94.0	90.7	99.8	1.7
Ethiopia	80.1	19.8	22.8	5.3
Fiji	89.1	82.8	-	2.7
Finland	96.0	96.9	-	1.8
France	98.5	99.4	-	2.0
Gabon	-	-	83.2	3.3
Gambia	71.0	41.4	34.3	5.1
Georgia	97.6	79.2	99.7	1.6
Germany	97.5	-	-	1.4
Ghana	76.2	44.1	59.3	4.0
Gibraltar	-	-	-	-
Greece	99.7	90.6	95.9	1.5
Grenada	92.6	84.6	-	2.3
Guatemala	93.5	38.7	68.7	4.1
Guinea	66.2	21.8	26.4	5.4
Guinea-Bissau	-	-	36.5	5.7
Guyana	94.8	-	-	2.3
Haiti	-	-	-	3.5
Holy See	-	-	-	-
Honduras	97.5	-	83.5	3.3
Hungary	88.9	90.5	98.9	1.4
Iceland	97.7	91.3	-	2.1
India	88.0	-	50.8	2.7
Indonesia	94.4	68.1	88.8	2.2
Iran	-	-	77.2	1.8
Iraq	82.0	38.4	69.2	4.1
Ireland	98.0	90.5	-	2.1
Israel	97.6	87.5	-	3.0
Italy	97.9	95.1	98.5	1.4
Jamaica	78.9	79.1	90.8	2.4
Japan	-	98.4	-	1.3
Jordan	90.2	84.0	88.9	3.5
Kazakhstan	91.6	90.9	99.5	2.6
Kenya	83.0	48.1	82.8	4.9
Kiribati	-	70.7	-	3.4
Kuwait	86.6	80.2	93.1	2.2
Kyrgyzstan	83.3	79.6	99.1	2.7
Laos	80.7	33.5	63.2	3.5
Latvia	-	-	99.8	1.5
Lebanon	89.3	79.0	86.0	1.8
Lesotho	74.3	30.9	95.1	3.3
Liberia	-	-	53.0	5.9
Libya	-	-	81.3	2.7

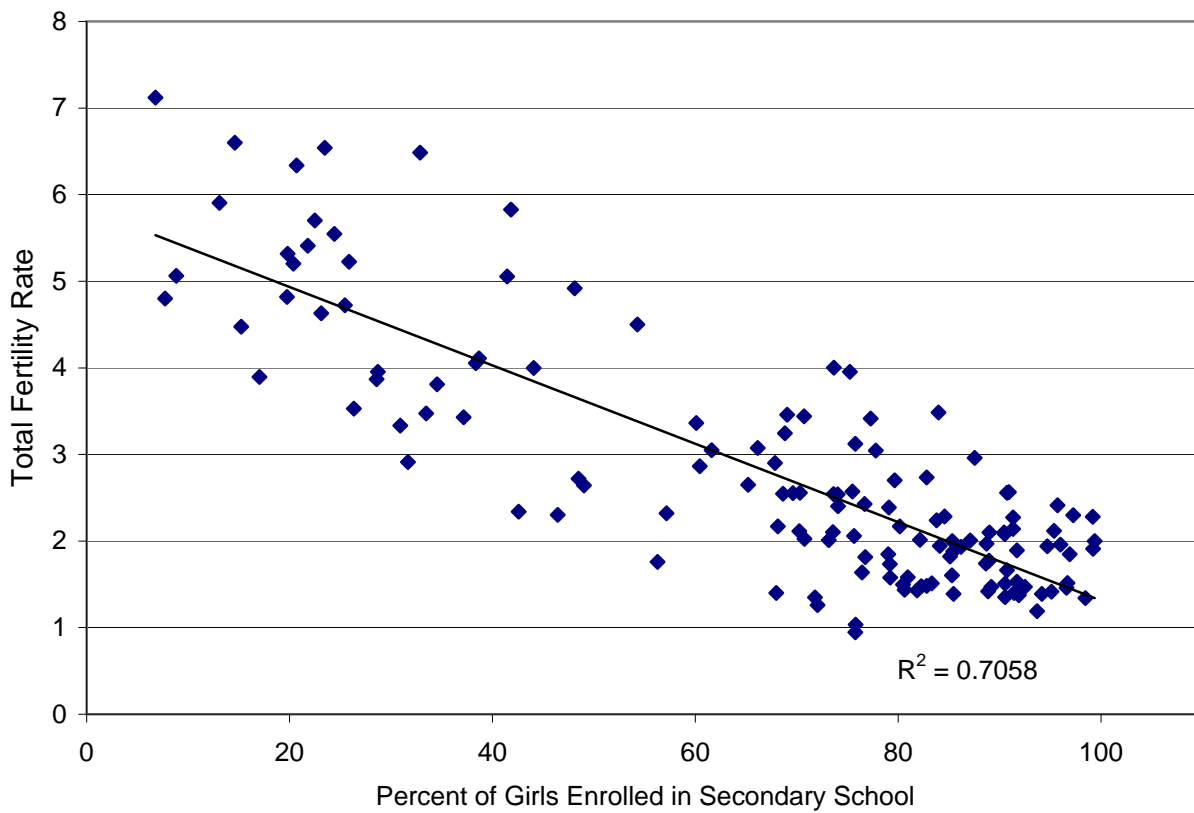
Liechtenstein	91.8	68.0	-	1.4
Lithuania	91.1	92.5	99.7	1.5
Luxembourg	96.5	85.3	-	1.6
Macedonia	86.4	80.6	95.4	1.4
Madagascar	98.9	25.5	65.3	4.7
Malawi	93.2	24.4	65.8	5.5
Malaysia	96.0	70.3	89.8	2.6
Maldives	95.1	70.8	98.4	2.0
Mali	66.4	23.5	18.2	6.5
Malta	92.3	81.9	93.5	1.4
Marshall Islands	79.7	54.3	-	4.5
Mauritania	78.8	15.2	49.5	4.5
Mauritius	94.6	80.9	84.8	1.6
Mexico	98.1	73.6	91.5	2.1
Micronesia	-	-	-	3.6
Moldova	86.8	80.5	97.8	1.5
Monaco	-	-	-	-
Mongolia	90.0	85.3	97.8	2.0
Montenegro	-	-	-	1.6
Montserrat	96.1	96.2	-	-
Morocco	88.1	-	44.1	2.4
Mozambique	80.1	8.8	40.1	5.1
Namibia	91.1	60.1	87.7	3.4
Nauru	-	-	-	-
Nepal	-	-	45.4	2.9
Netherlands	98.4	89.0	-	1.8
Netherlands Antilles	-	-	96.3	2.0
New Zealand	99.7	-	-	2.2
Nicaragua	92.0	48.5	77.9	2.7
Niger	47.6	6.8	15.1	7.1
Nigeria	58.3	22.5	48.8	5.7
Niue	-	-	-	-
North Korea	-	-	100.0	1.9
Norway	98.8	96.0	-	2.0
Oman	69.2	77.8	80.9	3.0
Pakistan	60.2	28.7	40.0	4.0
Palau	-	-	-	-
Palestinian Territory	75.0	87.2	90.9	-
Panama	97.8	68.7	92.8	2.5
Papua New Guinea	-	-	55.6	4.1
Paraguay	87.3	61.6	93.5	3.0
Peru	94.6	75.5	84.6	2.6
Philippines	92.7	66.1	93.9	3.1
Poland	95.4	94.2	99.3	1.4
Portugal	98.4	91.9	92.9	1.4
Puerto Rico	-	-	90.4	1.8
Qatar	93.1	95.7	90.4	2.4
Romania	90.1	71.8	96.9	1.4
Russia	-	-	99.4	1.5
Rwanda	97.0	-	66.1	5.4
Samoa	92.6	75.2	98.5	4.0
San Marino	93.0	-	-	1.5
Sao Tome and Principe	99.5	34.6	83.3	3.8
Saudi Arabia	85.0	75.8	80.2	3.1
Senegal	74.4	19.7	33.0	4.8
Serbia	93.7	91.4	96.2	1.4
Seychelles	95.4	99.2	92.3	2.3
Sierra Leone	-	20.4	28.9	5.2

Singapore	-	-	91.6	1.3
Slovakia	-	-	-	1.3
Slovenia	96.7	91.7	99.7	1.5
Solomon Islands	80.0	28.6	-	3.9
Somalia	-	-	-	6.4
South Africa	87.6	74.0	88.1	2.5
South Korea	97.9	93.7	-	1.2
Spain	99.7	96.6	96.9	1.5
Sri Lanka	99.8	-	89.1	2.3
St. Kitts and Nevis	91.8	91.8	-	-
St. Lucia	90.1	82.1	-	2.0
St. Vincent and the Grenadines	92.3	95.4	-	2.1
Sudan	-	-	59.6	4.2
Suriname	89.6	74.1	88.4	2.4
Swaziland	83.7	26.3	85.6	3.5
Sweden	94.2	99.2	-	1.9
Switzerland	94.1	82.8	-	1.5
Syria	-	68.8	77.2	3.2
Tajikistan	95.4	77.3	99.5	3.4
Tanzania	97.0	-	66.3	5.6
Thailand	89.4	76.7	91.5	1.8
Timor-Leste	80.6	32.9	-	6.5
Togo	89.0	-	53.7	4.3
Tokelau	-	-	-	-
Tonga	95.5	73.7	99.1	4.0
Trinidad and Tobago	91.5	76.4	98.2	1.6
Tunisia	98.1	75.6	71.0	2.1
Turkey	93.6	70.3	81.3	2.1
Turkmenistan	-	-	99.3	2.5
Turks and Caicos Islands	80.7	68.7	-	-
Tuvalu	-	-	-	-
Uganda	99.3	20.7	66.8	6.3
Ukraine	89.1	85.5	99.6	1.4
United Arab Emirates	88.8	84.1	91.5	1.9
United Kingdom	99.7	94.7	-	1.9
United States	92.6	89.0	-	2.1
Uruguay	98.4	73.1	98.5	2.0
Uzbekistan	86.1	90.7	98.9	2.6
Vanuatu	96.3	-	79.5	4.0
Venezuela	90.2	73.6	94.9	2.5
Viet Nam	-	-	90.2	2.1
Yemen	65.7	25.9	42.8	5.2
Zambia	91.8	41.8	61.0	5.8
Zimbabwe	90.5	37.2	88.8	3.4

Source: Compiled by Earth Policy Institute from UNESCO Institute for Statistics, *Data Center*, electronic database, at [stats.uis.unesco.org](http://stats.uis.unesco.org), viewed 18 November 2010.

This is part of a supporting dataset for Lester R. Brown, **World on the Edge: How to Prevent Environmental and Economic Collapse** (New York: W.W. Norton & Company, 2011). For more information and a free download of the book, see Earth Policy Institute on-line at [www.earth-policy.org](http://www.earth-policy.org).

# Female Secondary Education and Total Fertility Rates



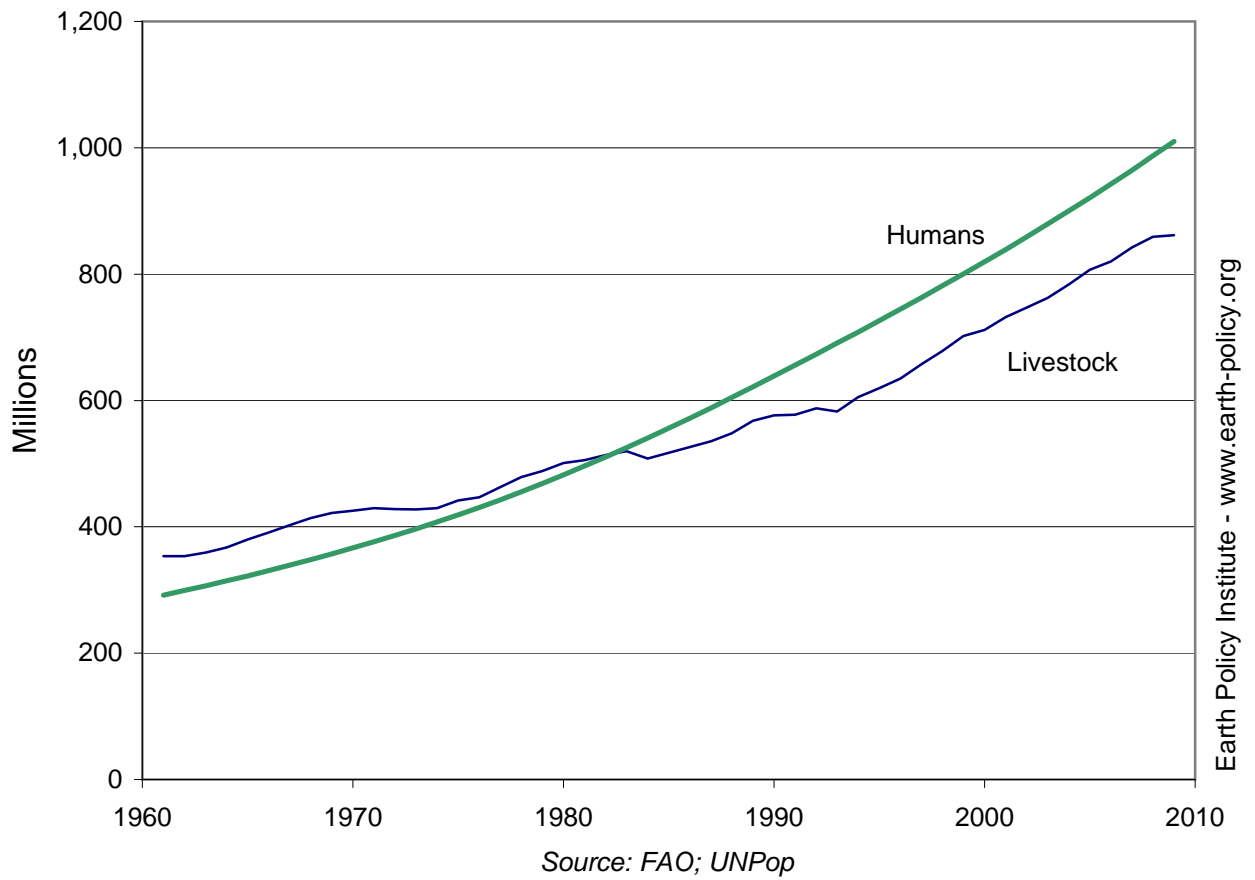
Source: EPI from UIS

### Livestock and Human Populations in Africa, 1961-2008

Year	Livestock Population Millions	Human Population
1961	353.4	292.0
1962	353.7	299.2
1963	359.1	306.6
1964	367.5	314.3
1965	380.0	322.3
1966	391.2	330.6
1967	402.6	339.2
1968	413.8	348.2
1969	422.1	357.3
1970	425.3	366.8
1971	429.6	376.5
1972	427.8	386.5
1973	427.6	396.8
1974	429.6	407.5
1975	441.8	418.8
1976	446.7	430.5
1977	462.8	442.8
1978	478.8	455.5
1979	488.2	468.7
1980	500.7	482.2
1981	505.4	496.2
1982	513.4	510.6
1983	520.0	525.4
1984	508.0	540.6
1985	517.3	556.1
1986	526.2	572.1
1987	535.2	588.3
1988	548.3	604.9
1989	567.9	621.7
1990	576.6	638.7
1991	577.4	655.9
1992	587.6	673.2
1993	582.4	690.7
1994	605.5	708.4
1995	619.3	726.3
1996	634.8	744.4
1997	657.4	762.7
1998	678.4	781.3
1999	702.0	800.2
2000	711.5	819.5
2001	731.7	839.0
2002	747.2	858.9
2003	762.5	879.2
2004	783.6	899.9
2005	806.7	921.1
2006	820.2	942.7
2007	842.3	964.7
2008	859.0	987.1
2009	861.7	1,009.9

Source: Compiled by Earth Policy Institute with livestock population from U.N. Food and Agriculture Organization, *FAOSTAT*, electronic database, available at [faostat.fao.org](http://faostat.fao.org), updated 2 September 2010; human population from U.N. Population Division, *World Population Prospects: The 2008 Revision Population Database*, at [esa.un.org/unpp](http://esa.un.org/unpp), updated 11 March 2009.

## Livestock and Human Populations in Africa, 1961-2008



## Livestock and Human Populations in Nigeria, 1961-2008

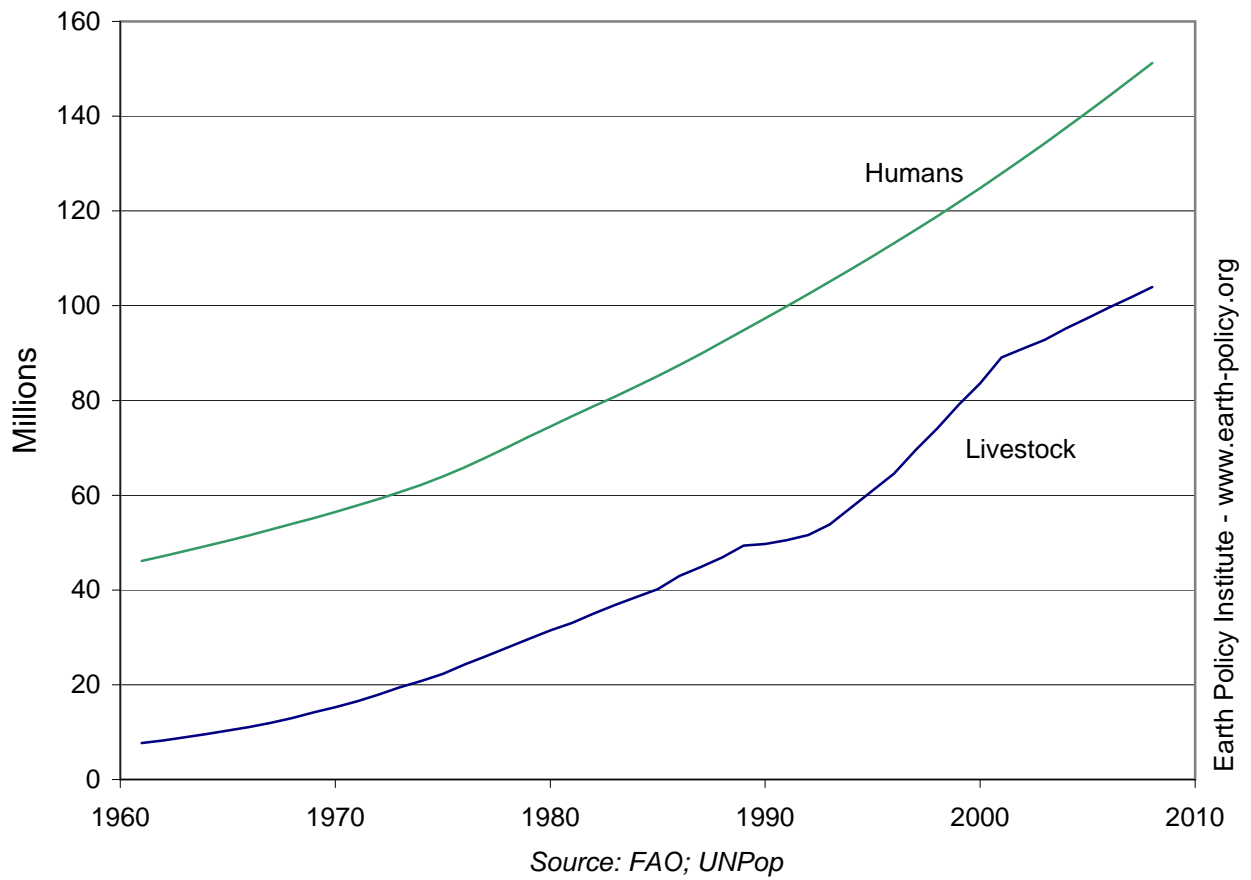
Year	Livestock Population Millions	Human Population
1961	7.7	46.1
1962	8.2	47.2
1963	8.9	48.2
1964	9.6	49.3
1965	10.3	50.4
1966	11.1	51.6
1967	12.0	52.7
1968	13.0	53.9
1969	14.2	55.2
1970	15.3	56.5
1971	16.5	57.8
1972	17.9	59.2
1973	19.4	60.6
1974	20.8	62.2
1975	22.3	63.9
1976	24.3	65.9
1977	26.0	68.0
1978	27.8	70.1
1979	29.7	72.3
1980	31.5	74.5
1981	33.0	76.6
1982	35.0	78.7
1983	36.8	80.8
1984	38.5	82.9
1985	40.2	85.2
1986	43.0	87.5
1987	44.9	89.9
1988	46.9	92.3
1989	49.4	94.8
1990	49.7	97.3
1991	50.5	99.9
1992	51.6	102.5
1993	53.8	105.1
1994	57.4	107.7
1995	61.0	110.4
1996	64.6	113.2
1997	69.6	116.0
1998	74.1	118.9
1999	79.1	121.8
2000	83.6	124.8
2001	89.1	127.9
2002	90.9	131.1
2003	92.8	134.3
2004	95.2	137.5
2005	97.4	140.9
2006	99.6	144.3
2007	101.7	147.7
2008	104.0	151.2

Source: Compiled by Earth Policy Institute with livestock population from U.N. Food and Agriculture Organization, *FAOSTAT*, electronic database, available at [faostat.fao.org](http://faostat.fao.org), updated 2 September 2010; human population from U.N. Population Division, *World Population Prospects: The 2008 Revision Population Database*, at [esa.un.org/unpp](http://esa.un.org/unpp), updated 11 March 2009.

This is part of a supporting dataset for Lester R. Brown, **World on the Edge: How to Prevent Environmental and Economic Collapse** (New York: W.W. Norton & Company, 2011). For more information and a free download of the book, see Earth Policy Institute online at [www.earth-policy.org](http://www.earth-policy.org).



## Livestock and Human Populations in Nigeria, 1961-2008



### Livestock and Human Populations in Pakistan, 1961-2008

Year	Livestock Population Millions	Human Population
1961	39.9	49.8
1962	41.0	50.8
1963	42.2	51.9
1964	43.3	53.0
1965	44.6	54.3
1966	46.6	55.6
1967	47.4	57.0
1968	48.2	58.5
1969	48.9	60.1
1970	50.2	61.8
1971	51.7	63.5
1972	53.7	65.3
1973	56.4	67.2
1974	59.4	69.2
1975	62.6	71.2
1976	66.1	73.3
1977	69.8	75.4
1978	73.9	77.6
1979	78.3	80.0
1980	73.0	82.6
1981	75.6	85.4
1982	77.7	88.4
1983	79.9	91.6
1984	82.1	94.9
1985	84.4	98.3
1986	86.5	101.8
1987	88.8	105.4
1988	91.2	109.0
1989	93.6	112.5
1990	96.2	115.8
1991	98.8	118.8
1992	101.6	121.7
1993	104.4	124.5
1994	107.3	127.3
1995	110.4	130.4
1996	105.4	133.7
1997	108.0	137.2
1998	110.6	140.8
1999	113.3	144.5
2000	116.2	148.1
2001	119.1	151.7
2002	122.2	155.2
2003	125.4	158.7
2004	128.7	162.2
2005	132.1	165.8
2006	137.2	169.5
2007	140.9	173.2
2008	144.7	177.0
2009	148.6	180.8

Source: Compiled by Earth Policy Institute with livestock population from U.N. Food and Agriculture Organization, *FAOSTAT*, electronic database, available at [faostat.fao.org](http://faostat.fao.org), updated 2 September 2010; human population from U.N. Population Division, *World Population Prospects: The 2008 Revision Population Database*, at [esa.un.org/unpp](http://esa.un.org/unpp), updated 11 March 2009.

## Livestock and Human Populations in Pakistan, 1961-2008

