

## World on the Edge - Food and Agriculture Data - Livestock and Fish

[World Animal Protein Production, 1961-2009](#)

GRAPH: World Animal Protein Production, 1961-2009

[World Animal Protein Production Per Person, 1961-2009](#)

GRAPH: World Animal Protein Production Per Person, 1961-2009

[World Grazing Livestock by Type, 1961-2009](#)

GRAPH: World Grazing Livestock by Type, 1961-2009

[Grazing Livestock in Africa, 1961-2009](#)

GRAPH: Grazing Livestock in Africa, 1961-2009

[Grazing Livestock in China, 1961-2009](#)

GRAPH: Grazing Livestock in China, 1961-2009

[Grazing Livestock in Iran, 1961-2008](#)

GRAPH: Grazing Livestock in Iran, 1961-2008

[Grazing Livestock in Nigeria, 1961-2008](#)

GRAPH: Grazing Livestock in Nigeria, 1961-2008

[Grazing Livestock in Pakistan, 1961-2009](#)

GRAPH: Grazing Livestock in Pakistan, 1961-2009

[Grazing Livestock in the United States, 1961-2009](#)

GRAPH: Grazing Livestock in the United States, 1961-2009

[Livestock and Human Populations in Africa, 1961-2008](#)

GRAPH: Livestock and Human Populations in Africa, 1961-2008

[Livestock and Human Populations in Nigeria, 1961-2008](#)

GRAPH: Livestock and Human Populations in Nigeria, 1961-2008

[Livestock and Human Populations in Pakistan, 1961-2008](#)

GRAPH: Livestock and Human Populations in Pakistan, 1961-2008

[Milk Production in India and the United States, 1961-2009](#)

GRAPH: Milk Production in India and the United States, 1961-2009

[World Total and Per Person Wild Fish Harvest, 1950-2008](#)

GRAPH: World Total Wild Fish Harvest, 1950-2008

GRAPH: World Wild Fish Catch Per Person, 1950-2008

[Marine Protected Area in Top 15 Countries, 2009](#)

A full listing of data for the entire book is on-line at:

[http://www.earth-policy.org/books/wote/wote\\_data](http://www.earth-policy.org/books/wote/wote_data)

This is part of a supporting dataset for Lester R. Brown, **World on the Edge: How to Prevent Environmental and Economic Collapse** (New York: W.W. Norton & Company, 2011). For more information and a free download of the book, see Earth Policy Institute on-line at [www.earth-policy.org](http://www.earth-policy.org).

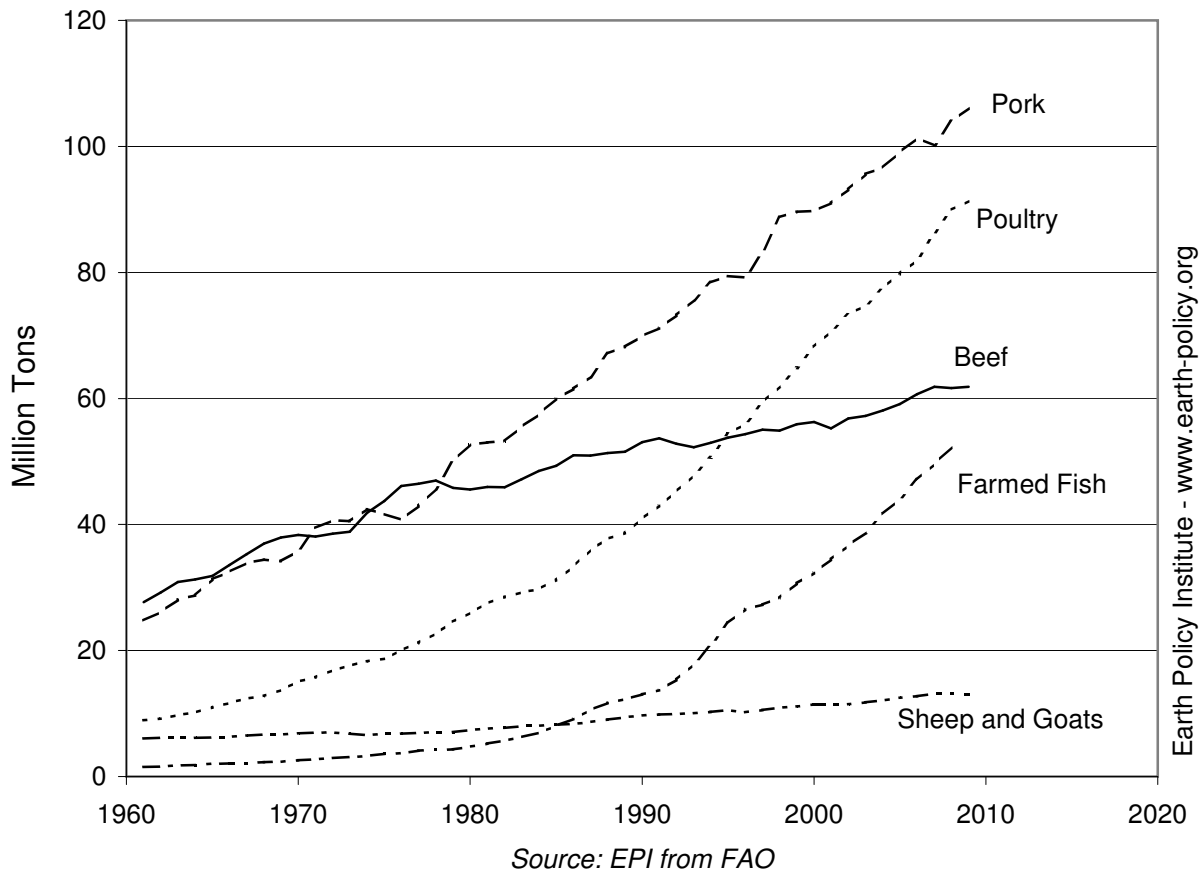
### World Animal Protein Production, 1961-2009

Year	Beef	Pork	Poultry	Farmed Fish	Sheep and Goats
	Million Tons				
1961	27.7	24.8	9.0	1.5	6.0
1962	29.2	26.1	9.2	1.6	6.2
1963	30.9	28.1	9.8	1.8	6.2
1964	31.3	28.7	10.1	1.8	6.2
1965	31.9	31.3	11.0	2.0	6.2
1966	33.6	32.5	11.7	2.1	6.3
1967	35.3	33.9	12.4	2.1	6.5
1968	37.0	34.4	12.8	2.3	6.7
1969	37.9	34.2	13.7	2.4	6.7
1970	38.3	35.8	15.1	2.6	6.8
1971	38.1	39.5	15.7	2.7	7.0
1972	38.5	40.7	16.8	3.0	7.0
1973	38.8	40.5	17.6	3.1	6.8
1974	41.9	42.5	18.3	3.3	6.6
1975	43.7	41.7	18.7	3.6	6.8
1976	46.1	40.8	20.0	3.7	6.8
1977	46.5	43.0	21.2	4.1	6.9
1978	47.0	45.7	22.7	4.2	7.0
1979	45.8	50.1	24.6	4.3	7.0
1980	45.6	52.7	26.0	4.7	7.3
1981	46.0	53.0	27.5	5.2	7.6
1982	45.9	53.2	28.5	5.7	7.7
1983	47.2	55.5	29.2	6.2	8.0
1984	48.5	57.5	29.8	6.9	8.1
1985	49.3	60.0	31.2	8.0	8.2
1986	51.0	61.5	33.3	9.2	8.3
1987	50.9	63.4	36.0	10.6	8.7
1988	51.3	67.1	37.7	11.7	9.1
1989	51.6	68.2	38.6	12.3	9.4
1990	53.1	69.9	40.9	13.1	9.7
1991	53.7	71.2	43.0	13.7	9.9
1992	52.8	73.2	45.2	15.4	9.9
1993	52.3	75.6	47.9	17.8	10.0
1994	53.0	78.4	50.6	20.8	10.3
1995	53.8	79.4	54.4	24.4	10.5
1996	54.3	79.2	55.9	26.6	10.2
1997	55.0	83.2	59.4	27.3	10.5
1998	54.9	88.8	61.9	28.3	10.9
1999	55.9	89.6	64.8	30.7	11.1
2000	56.3	89.8	68.2	32.3	11.4
2001	55.3	91.0	70.6	34.5	11.4
2002	56.8	93.2	73.4	36.7	11.5
2003	57.2	95.6	74.7	38.7	11.8
2004	58.1	96.6	77.5	41.7	12.1
2005	59.1	99.1	79.8	44.1	12.5
2006	60.7	101.3	81.9	47.1	12.8
2007	61.9	100.2	86.3	49.6	13.1
2008	61.7	104.0	89.9	52.3	13.1
2009	61.8	106.1	91.3	n/a	13.0

Source: Compiled by Earth Policy Institute from U.N. Food and Agriculture Organization (FAO), *ProdSTAT*, electronic database, at [faostat.fao.org](http://faostat.fao.org), updated September 2010, and FAO, *FISHSTAT Plus*, electronic database, at [www.fao.org/fishery/statistics/software/fishstat](http://www.fao.org/fishery/statistics/software/fishstat), updated March 2010.

This is part of a supporting dataset for Lester R. Brown, **World on the Edge: How to Prevent Environmental and Economic Collapse** (New York: W.W. Norton & Company, 2011). For more information and a free download of the book, see Earth Policy Institute on-line at [www.earth-policy.org](http://www.earth-policy.org).

# World Animal Protein Production, 1961-2009



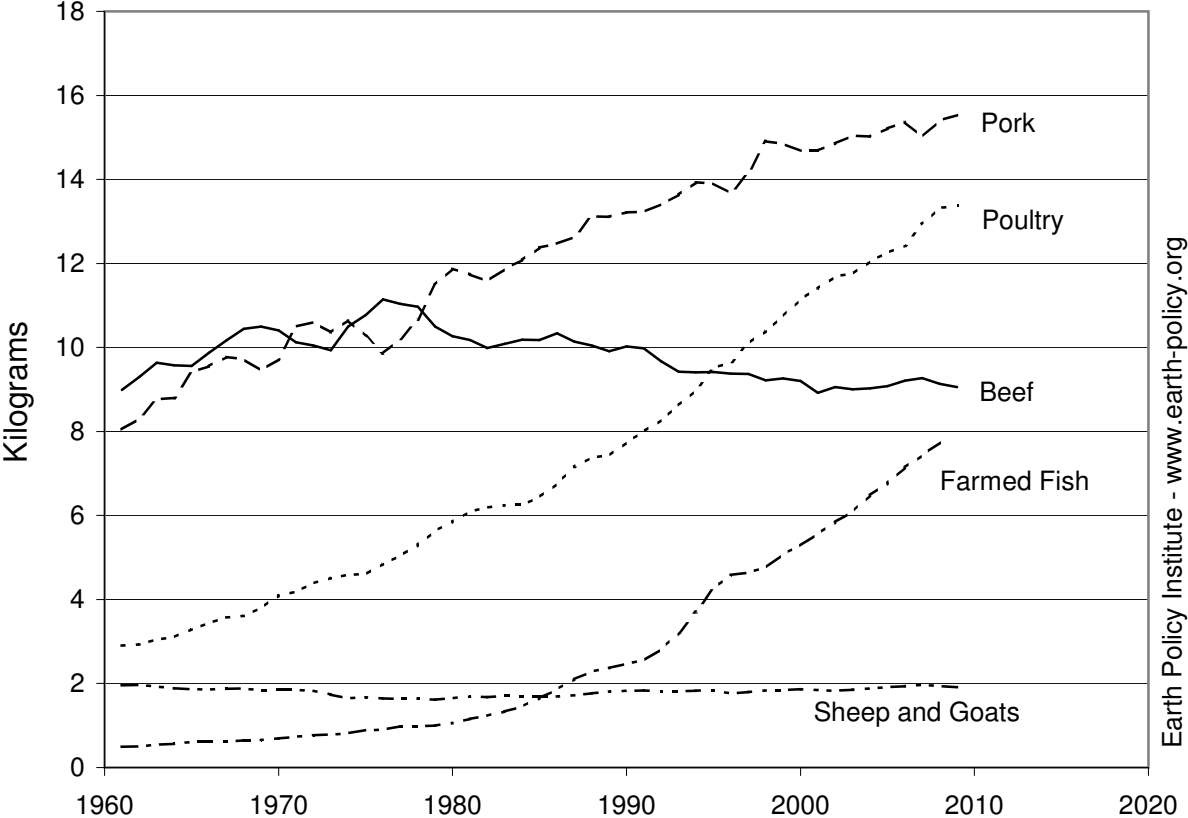
### World Animal Protein Production Per Person, 1961-2009

Year	Beef	Pork	Poultry Kilograms	Farmed Fish	Sheep and Goats
1961	9.0	8.0	2.9	0.5	2.0
1962	9.3	8.3	2.9	0.5	2.0
1963	9.6	8.8	3.0	0.6	1.9
1964	9.6	8.8	3.1	0.6	1.9
1965	9.6	9.4	3.3	0.6	1.9
1966	9.9	9.5	3.4	0.6	1.9
1967	10.2	9.8	3.6	0.6	1.9
1968	10.4	9.7	3.6	0.6	1.9
1969	10.5	9.5	3.8	0.7	1.8
1970	10.4	9.7	4.1	0.7	1.9
1971	10.1	10.5	4.2	0.7	1.9
1972	10.0	10.6	4.4	0.8	1.8
1973	9.9	10.4	4.5	0.8	1.7
1974	10.5	10.7	4.6	0.8	1.6
1975	10.8	10.3	4.6	0.9	1.7
1976	11.1	9.9	4.8	0.9	1.6
1977	11.0	10.2	5.0	1.0	1.6
1978	11.0	10.7	5.3	1.0	1.6
1979	10.5	11.5	5.6	1.0	1.6
1980	10.3	11.9	5.8	1.1	1.7
1981	10.2	11.7	6.1	1.2	1.7
1982	10.0	11.6	6.2	1.2	1.7
1983	10.1	11.9	6.2	1.3	1.7
1984	10.2	12.1	6.3	1.5	1.7
1985	10.2	12.4	6.4	1.7	1.7
1986	10.3	12.5	6.8	1.9	1.7
1987	10.1	12.6	7.2	2.1	1.7
1988	10.0	13.1	7.4	2.3	1.8
1989	9.9	13.1	7.4	2.4	1.8
1990	10.0	13.2	7.7	2.5	1.8
1991	10.0	13.2	8.0	2.6	1.8
1992	9.7	13.4	8.3	2.8	1.8
1993	9.4	13.6	8.6	3.2	1.8
1994	9.4	13.9	9.0	3.7	1.8
1995	9.4	13.9	9.5	4.3	1.8
1996	9.4	13.7	9.6	4.6	1.8
1997	9.4	14.2	10.1	4.6	1.8
1998	9.2	14.9	10.4	4.8	1.8
1999	9.3	14.9	10.7	5.1	1.8
2000	9.2	14.7	11.2	5.3	1.9
2001	8.9	14.7	11.4	5.6	1.8
2002	9.1	14.9	11.7	5.8	1.8
2003	9.0	15.0	11.8	6.1	1.9
2004	9.0	15.0	12.0	6.5	1.9
2005	9.1	15.2	12.3	6.8	1.9
2006	9.2	15.4	12.4	7.1	1.9
2007	9.3	15.0	12.9	7.4	2.0
2008	9.1	15.4	13.3	7.7	1.9
2009	9.1	15.5	13.4	n/a	1.9

Source: Compiled by Earth Policy Institute from U.N. Food and Agriculture Organization (FAO), *ProdSTAT*, electronic database, at [faostat.fao.org](http://faostat.fao.org), updated September 2010; FAO, *FISHSTAT Plus*, electronic database, at [www.fao.org/fishery/statistics/software/fishstat](http://www.fao.org/fishery/statistics/software/fishstat), updated March 2010; U.N. Population Division, *World Population Prospects: The 2008 Revision Population Database*, electronic database, at [esa.un.org/unpp](http://esa.un.org/unpp), updated 11 March 2009.

This is part of a supporting dataset for Lester R. Brown, **World on the Edge: How to Prevent Environmental and Economic Collapse** (New York: W.W. Norton & Company, 2011). For more information and a free download of the book, see Earth Policy Institute on-line at [www.earth-policy.org](http://www.earth-policy.org).

# World Animal Protein Production Per Person, 1961-2009



Source: EPI from FAO, UNPop

Earth Policy Institute - [www.earth-policy.org](http://www.earth-policy.org)

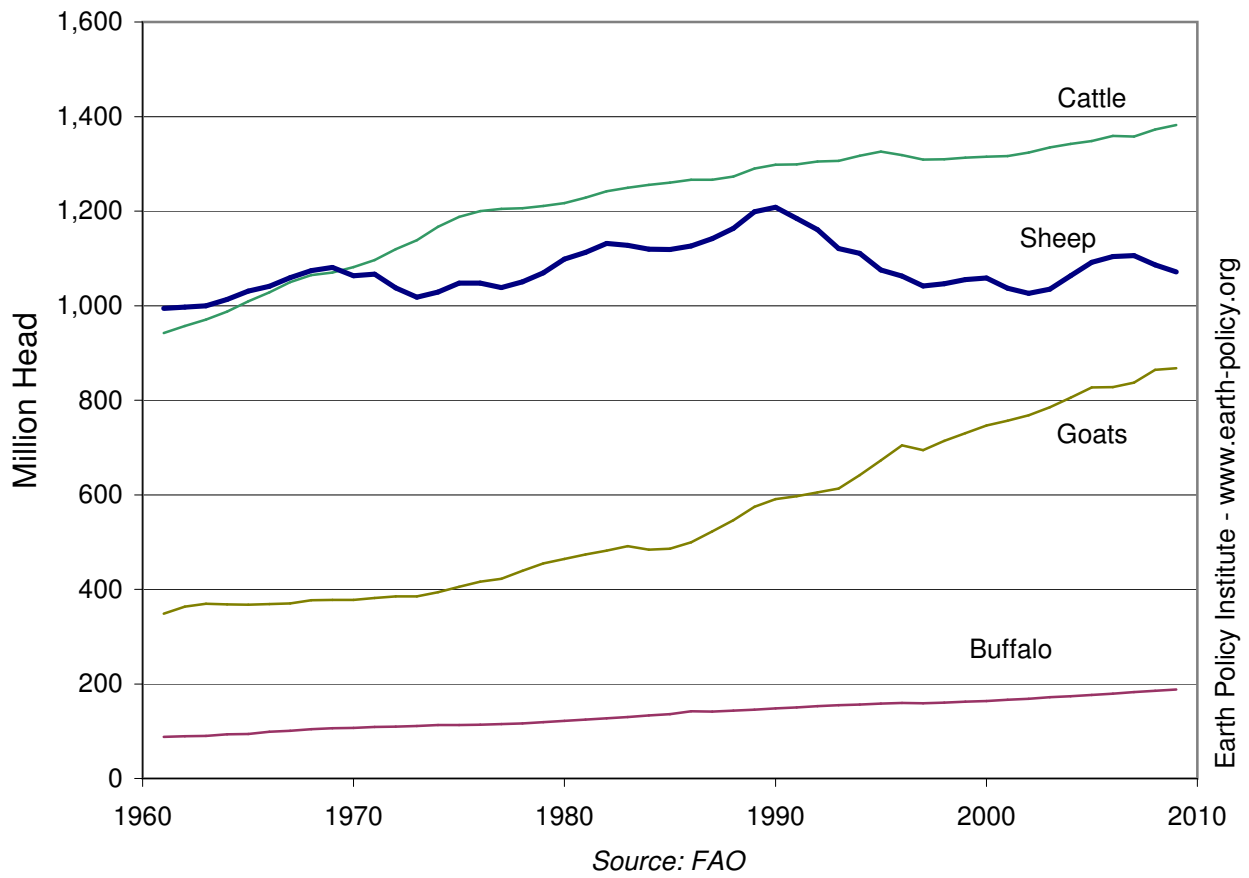
### World Grazing Livestock by Type, 1961-2009

Year	Buffalo	Cattle	Goats	Sheep	Total
	Million Head				
1961	88	942	349	994	2,373
1962	89	957	364	997	2,407
1963	90	970	370	1,000	2,430
1964	93	988	368	1,013	2,463
1965	94	1,009	367	1,031	2,502
1966	99	1,028	369	1,041	2,536
1967	101	1,050	371	1,059	2,581
1968	104	1,065	377	1,074	2,620
1969	106	1,070	378	1,081	2,635
1970	107	1,082	378	1,063	2,630
1971	109	1,097	382	1,066	2,653
1972	110	1,119	385	1,038	2,652
1973	111	1,139	385	1,018	2,653
1974	113	1,167	394	1,029	2,703
1975	113	1,188	405	1,048	2,754
1976	114	1,200	416	1,048	2,778
1977	115	1,205	422	1,038	2,780
1978	117	1,206	439	1,051	2,812
1979	119	1,211	455	1,069	2,854
1980	121	1,217	464	1,099	2,902
1981	124	1,229	474	1,113	2,940
1982	128	1,242	482	1,132	2,983
1983	130	1,249	491	1,127	2,998
1984	133	1,255	484	1,119	2,992
1985	136	1,260	486	1,119	3,001
1986	142	1,267	500	1,127	3,035
1987	142	1,267	522	1,142	3,073
1988	144	1,273	546	1,164	3,126
1989	146	1,290	574	1,198	3,208
1990	148	1,298	591	1,208	3,246
1991	150	1,298	597	1,184	3,230
1992	153	1,305	605	1,161	3,224
1993	155	1,306	613	1,121	3,194
1994	157	1,317	642	1,111	3,226
1995	159	1,326	673	1,076	3,233
1996	160	1,319	704	1,063	3,245
1997	159	1,309	694	1,041	3,204
1998	161	1,310	714	1,046	3,230
1999	162	1,313	730	1,055	3,260
2000	164	1,315	747	1,059	3,285
2001	166	1,316	757	1,037	3,277
2002	169	1,324	768	1,026	3,287
2003	172	1,335	785	1,035	3,326
2004	174	1,342	806	1,063	3,385
2005	176	1,348	827	1,091	3,443
2006	180	1,359	828	1,104	3,471
2007	183	1,358	837	1,106	3,483
2008	185	1,372	864	1,086	3,508
2009	188	1,382	868	1,071	3,510

Source: U.N. Food and Agriculture Organization, *FAOSTAT*, electronic database, available at [faostat.fao.org](http://faostat.fao.org), updated 2 September 2010.

This is part of a supporting dataset for Lester R. Brown, **World on the Edge: How to Prevent Environmental and Economic Collapse** (New York: W.W. Norton & Company, 2011). For more information and a free download of the book, see Earth Policy Institute on-line at [www.earth-policy.org](http://www.earth-policy.org).

# World Grazing Livestock by Type, 1961-2009



## Grazing Livestock in Africa, 1961-2009

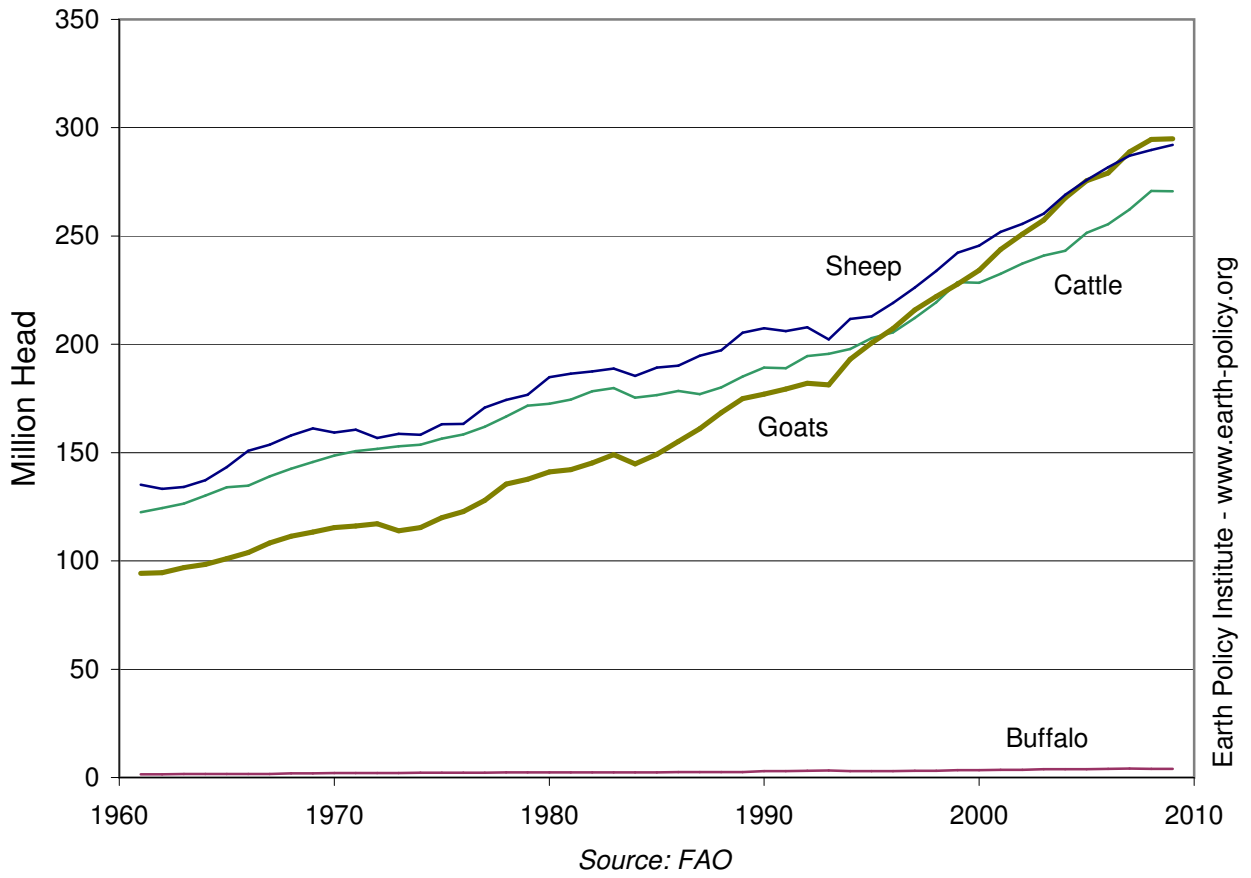
Year	Buffalo	Cattle	Goats	Sheep	Total
	Million Head				
1961	1.5	122.5	94.3	135.1	353.4
1962	1.5	124.5	94.5	133.2	353.7
1963	1.6	126.5	96.9	134.2	359.1
1964	1.6	130.2	98.4	137.3	367.5
1965	1.6	134.0	101.0	143.3	380.0
1966	1.6	134.8	103.9	150.8	391.2
1967	1.7	139.0	108.3	153.7	402.6
1968	1.9	142.6	111.3	158.0	413.8
1969	2.0	145.6	113.3	161.2	422.1
1970	2.0	148.6	115.4	159.3	425.3
1971	2.1	150.7	116.1	160.6	429.6
1972	2.1	151.8	117.1	156.8	427.8
1973	2.1	152.9	113.9	158.7	427.6
1974	2.2	153.7	115.5	158.2	429.6
1975	2.2	156.5	120.0	163.1	441.8
1976	2.2	158.3	122.8	163.3	446.7
1977	2.3	161.9	127.9	170.7	462.8
1978	2.3	166.6	135.4	174.4	478.8
1979	2.3	171.6	137.6	176.6	488.2
1980	2.3	172.5	141.1	184.8	500.7
1981	2.4	174.4	142.2	186.4	505.4
1982	2.4	178.3	145.2	187.4	513.4
1983	2.3	179.8	149.0	188.8	520.0
1984	2.4	175.3	144.8	185.4	508.0
1985	2.4	176.5	149.2	189.2	517.3
1986	2.4	178.5	155.1	190.1	526.2
1987	2.5	177.0	161.0	194.8	535.2
1988	2.5	180.1	168.5	197.3	548.3
1989	2.5	185.1	175.0	205.3	567.9
1990	2.9	189.2	177.0	207.5	576.6
1991	3.0	188.9	179.4	206.1	577.4
1992	3.2	194.5	182.0	207.9	587.6
1993	3.3	195.6	181.3	202.2	582.4
1994	2.9	197.8	193.1	211.7	605.5
1995	3.0	202.9	200.6	212.8	619.3
1996	2.9	205.6	207.3	219.1	634.8
1997	3.1	212.2	215.9	226.2	657.4
1998	3.1	219.4	222.0	233.9	678.4
1999	3.3	228.6	227.8	242.2	702.0
2000	3.4	228.4	234.2	245.5	711.5
2001	3.5	232.6	243.7	251.9	731.7
2002	3.6	237.2	250.8	255.6	747.2
2003	3.8	240.9	257.4	260.4	762.5
2004	3.8	243.1	267.6	269.0	783.6
2005	3.9	251.4	275.5	275.9	806.7
2006	3.9	255.5	279.1	281.8	820.2
2007	4.1	262.2	288.9	287.1	842.3
2008	4.1	270.8	294.5	289.7	859.0
2009*	4.0	270.7	294.9	292.1	861.7

\* Note: Figures for 2009 are FAO estimates.

Source: U.N. Food and Agriculture Organization, *FAOSTAT*, electronic database, available at [faostat.fao.org](http://faostat.fao.org), updated 2 September 2010.



# Grazing Livestock in Africa, 1961-2009



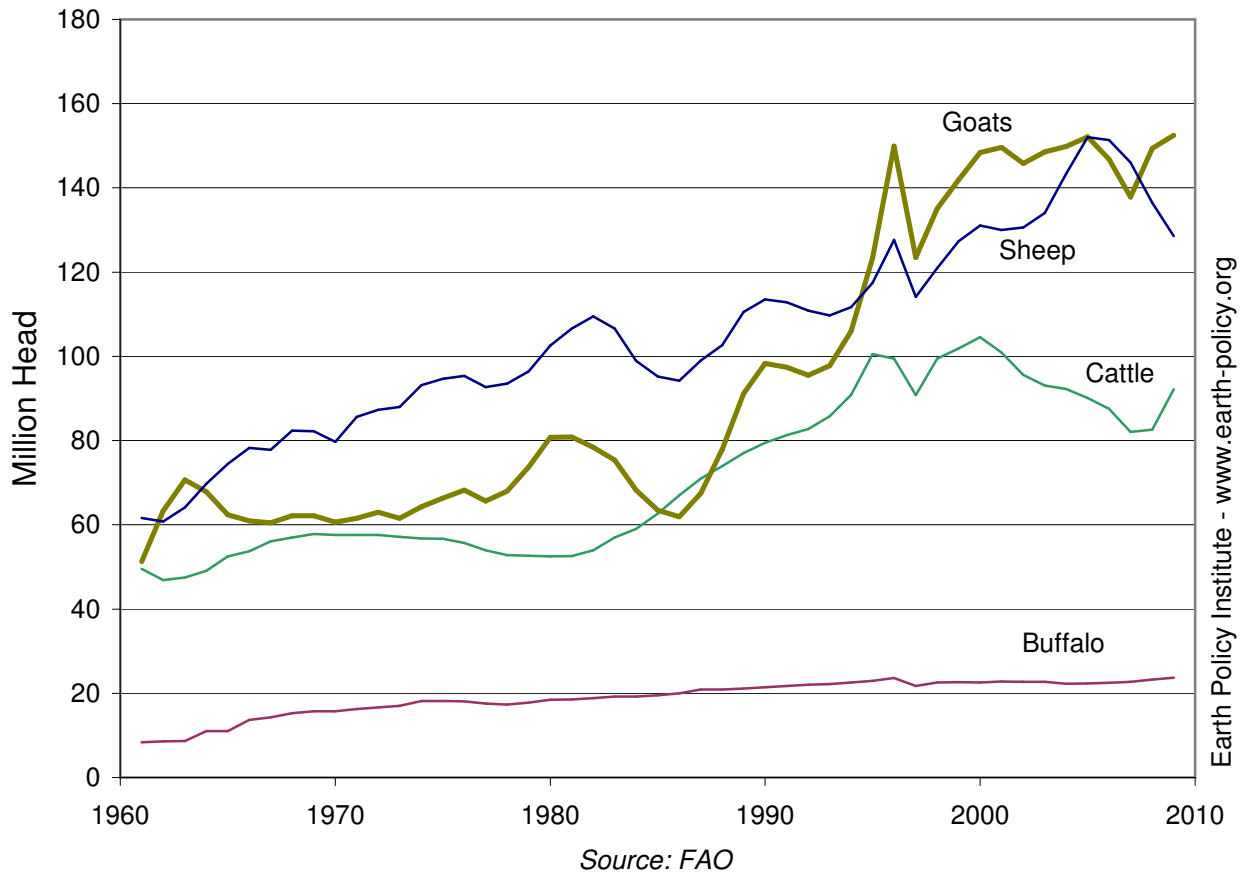
### Grazing Livestock in China, 1961-2009

Year	Buffalo	Cattle	Goats	Sheep	Total
			Million Head		
1961	8.4	49.5	51.3	61.6	170.8
1962	8.6	46.9	63.3	60.8	179.4
1963	8.7	47.5	70.7	64.1	190.9
1964	11.0	49.1	67.9	69.7	197.7
1965	11.0	52.5	62.4	74.5	200.4
1966	13.7	53.7	60.9	78.3	206.5
1967	14.3	56.1	60.5	77.8	208.6
1968	15.2	57.0	62.2	82.3	216.7
1969	15.7	57.8	62.2	82.2	217.9
1970	15.7	57.6	60.7	79.7	213.7
1971	16.3	57.6	61.6	85.6	221.1
1972	16.7	57.6	63.0	87.3	224.5
1973	17.0	57.1	61.5	88.0	223.6
1974	18.1	56.8	64.3	93.2	232.4
1975	18.1	56.7	66.4	94.7	235.9
1976	18.1	55.7	68.2	95.3	237.4
1977	17.6	54.0	65.7	92.7	229.9
1978	17.3	52.8	68.0	93.5	231.7
1979	17.8	52.6	73.7	96.4	240.6
1980	18.4	52.5	80.8	102.6	254.3
1981	18.6	52.6	80.9	106.6	258.7
1982	18.8	53.9	78.4	109.5	260.6
1983	19.2	57.0	75.4	106.6	258.2
1984	19.2	59.0	68.2	98.9	245.4
1985	19.5	62.7	63.4	95.2	240.9
1986	20.0	67.0	61.9	94.2	243.1
1987	20.9	71.0	67.5	99.0	258.3
1988	20.9	74.0	77.9	102.7	275.4
1989	21.1	77.0	91.2	110.6	299.9
1990	21.4	79.5	98.3	113.5	312.7
1991	21.7	81.3	97.4	112.8	313.2
1992	22.0	82.7	95.5	110.9	311.1
1993	22.2	85.8	97.8	109.7	315.5
1994	22.6	90.9	106.0	111.7	331.1
1995	22.9	100.6	123.4	117.4	364.3
1996	23.6	99.5	149.9	127.6	400.6
1997	21.7	90.8	123.5	114.1	350.2
1998	22.6	99.4	135.1	121.0	378.1
1999	22.7	101.9	141.9	127.4	393.9
2000	22.6	104.6	148.4	131.1	406.6
2001	22.8	100.9	149.6	130.0	403.4
2002	22.7	95.6	145.8	130.6	394.7
2003	22.7	93.1	148.6	134.0	398.4
2004	22.3	92.2	149.8	143.4	407.7
2005	22.4	90.1	152.1	152.0	416.7
2006	22.5	87.5	146.8	151.3	408.2
2007	22.7	82.1	137.9	146.0	388.7
2008	23.3	82.6	149.4	136.4	391.7
2009	23.7	92.1	152.5	128.6	396.9

Source: U.N. Food and Agriculture Organization, *FAOSTAT*, electronic database, available at [faostat.fao.org](http://faostat.fao.org), updated 2 September 2010.

This is part of a supporting dataset for Lester R. Brown, **World on the Edge: How to Prevent Environmental and Economic Collapse** (New York: W.W. Norton & Company, 2011). For more information and a free download of the book, see Earth Policy Institute on-line at [www.earth-policy.org](http://www.earth-policy.org).

# Grazing Livestock in China, 1961-2009



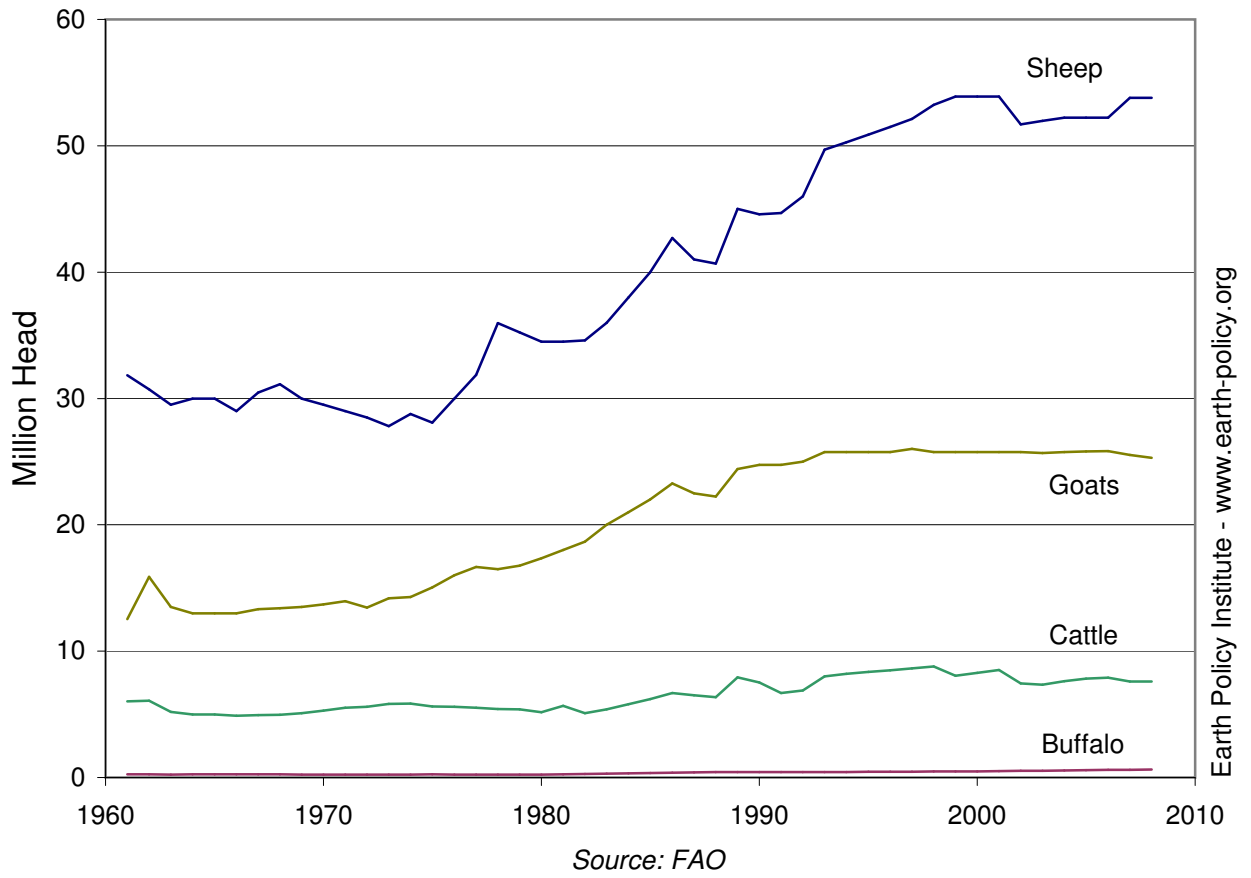
### Grazing Livestock in Iran, 1961-2008

Year	Buffalo	Cattle	Goats	Sheep	Total
	Million Head				
1961	0.2	6.0	12.5	31.8	50.6
1962	0.3	6.1	15.9	30.7	52.9
1963	0.2	5.2	13.5	29.5	48.4
1964	0.3	5.0	13.0	30.0	48.3
1965	0.3	5.0	13.0	30.0	48.3
1966	0.3	4.9	13.0	29.0	47.1
1967	0.3	4.9	13.3	30.5	49.0
1968	0.3	5.0	13.4	31.1	49.7
1969	0.2	5.1	13.5	30.0	48.8
1970	0.2	5.3	13.7	29.5	48.7
1971	0.2	5.5	14.0	29.0	48.7
1972	0.2	5.6	13.5	28.5	47.8
1973	0.2	5.8	14.2	27.8	48.1
1974	0.2	5.9	14.3	28.8	49.2
1975	0.2	5.6	15.1	28.1	49.0
1976	0.2	5.6	16.0	30.0	51.8
1977	0.2	5.5	16.7	31.9	54.3
1978	0.2	5.4	16.5	36.0	58.1
1979	0.2	5.4	16.8	35.2	57.6
1980	0.2	5.2	17.4	34.5	57.3
1981	0.3	5.7	18.0	34.5	58.4
1982	0.3	5.1	18.7	34.6	58.7
1983	0.3	5.4	20.0	36.0	61.7
1984	0.3	5.8	21.0	38.0	65.1
1985	0.4	6.2	22.0	40.0	68.6
1986	0.4	6.7	23.3	42.7	73.0
1987	0.4	6.5	22.5	41.0	70.4
1988	0.4	6.4	22.2	40.7	69.7
1989	0.4	7.9	24.4	45.0	77.8
1990	0.4	7.5	24.7	44.6	77.3
1991	0.4	6.7	24.7	44.7	76.6
1992	0.4	6.9	25.0	46.0	78.3
1993	0.4	8.0	25.8	49.7	83.9
1994	0.4	8.2	25.8	50.3	84.7
1995	0.4	8.3	25.8	50.9	85.4
1996	0.5	8.5	25.8	51.5	86.2
1997	0.5	8.6	26.0	52.1	87.2
1998	0.5	8.8	25.8	53.2	88.3
1999	0.5	8.0	25.8	53.9	88.2
2000	0.5	8.3	25.8	53.9	88.4
2001	0.5	8.5	25.8	53.9	88.7
2002	0.5	7.4	25.8	51.7	85.4
2003	0.5	7.3	25.7	52.0	85.5
2004	0.6	7.6	25.8	52.2	86.2
2005	0.6	7.8	25.8	52.2	86.4
2006	0.6	7.9	25.8	52.2	86.5
2007	0.6	7.6	25.5	53.8	87.6
2008	0.6	7.6	25.3	53.8	87.3

Source: U.N. Food and Agriculture Organization, *FAOSTAT*, electronic database, available at [faostat.fao.org](http://faostat.fao.org), updated 2 September 2010.

This is part of a supporting dataset for Lester R. Brown, **World on the Edge: How to Prevent Environmental and Economic Collapse** (New York: W.W. Norton & Company, 2011). For more information and a free download of the book, see Earth Policy Institute on-line at [www.earth-policy.org](http://www.earth-policy.org).

# Grazing Livestock in Iran, 1961-2008

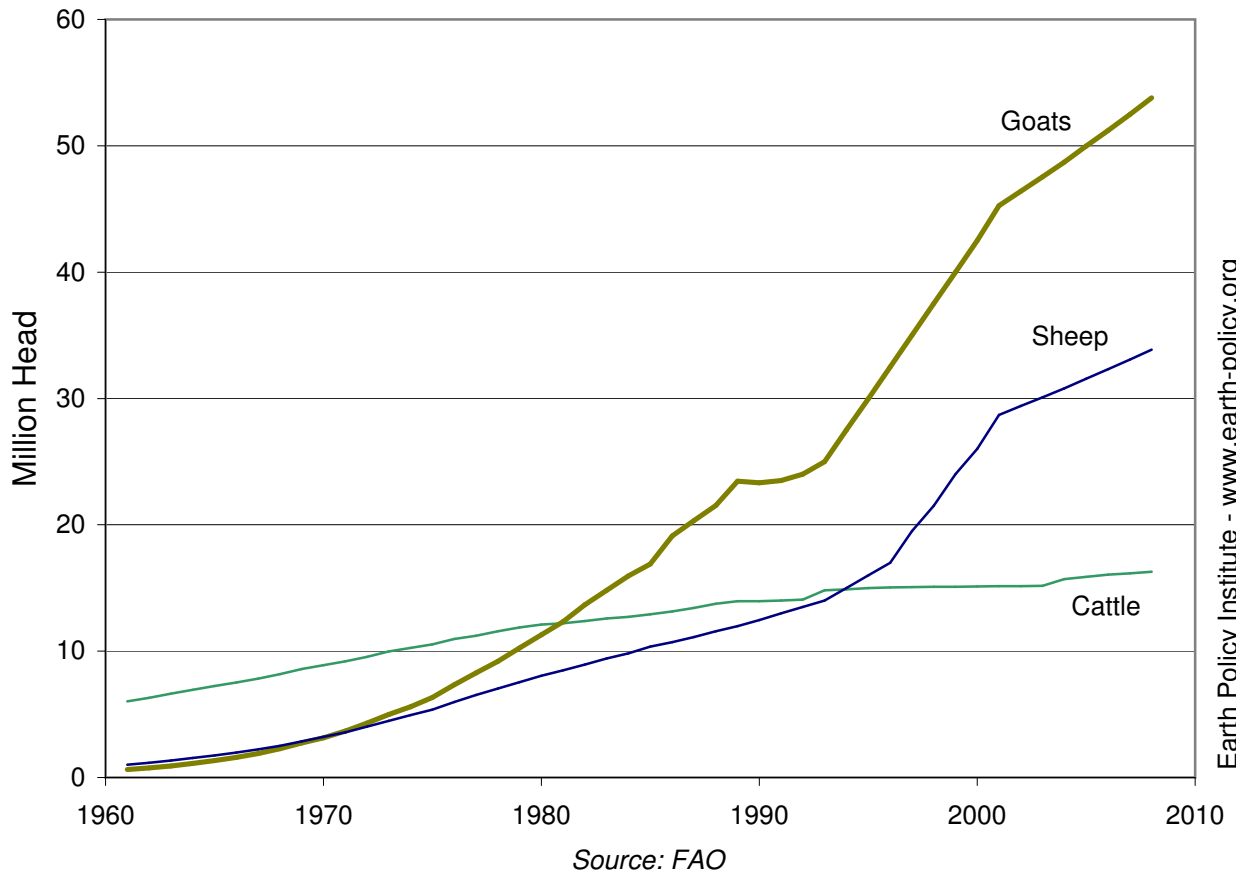


### Grazing Livestock in Nigeria, 1961-2008

Year	Cattle	Goats	Sheep	Total
	Million Head			
1961	6.0	0.6	1.0	7.7
1962	6.3	0.8	1.2	8.2
1963	6.6	0.9	1.3	8.9
1964	6.9	1.1	1.5	9.6
1965	7.2	1.3	1.8	10.3
1966	7.5	1.6	2.0	11.1
1967	7.8	1.9	2.2	12.0
1968	8.2	2.3	2.5	13.0
1969	8.6	2.7	2.9	14.2
1970	8.9	3.2	3.2	15.3
1971	9.2	3.7	3.6	16.5
1972	9.6	4.3	4.0	17.9
1973	10.0	5.0	4.5	19.4
1974	10.3	5.6	4.9	20.8
1975	10.5	6.3	5.4	22.3
1976	11.0	7.3	6.0	24.3
1977	11.2	8.3	6.5	26.0
1978	11.6	9.2	7.0	27.8
1979	11.9	10.3	7.5	29.7
1980	12.1	11.3	8.1	31.5
1981	12.2	12.3	8.5	33.0
1982	12.4	13.7	8.9	35.0
1983	12.6	14.8	9.4	36.8
1984	12.7	16.0	9.8	38.5
1985	12.9	16.9	10.4	40.2
1986	13.2	19.1	10.7	43.0
1987	13.4	20.3	11.1	44.9
1988	13.8	21.5	11.6	46.9
1989	14.0	23.5	12.0	49.4
1990	13.9	23.3	12.5	49.7
1991	14.0	23.5	13.0	50.5
1992	14.1	24.0	13.5	51.6
1993	14.8	25.0	14.0	53.8
1994	14.9	27.5	15.0	57.4
1995	15.0	30.0	16.0	61.0
1996	15.1	32.5	17.0	64.6
1997	15.1	35.0	19.5	69.6
1998	15.1	37.5	21.5	74.1
1999	15.1	40.0	24.0	79.1
2000	15.1	42.5	26.0	83.6
2001	15.1	45.3	28.7	89.1
2002	15.1	46.4	29.4	90.9
2003	15.2	47.6	30.1	92.8
2004	15.7	48.7	30.8	95.2
2005	15.9	50.0	31.5	97.4
2006	16.1	51.2	32.3	99.6
2007	16.2	52.5	33.1	101.7
2008	16.3	53.8	33.9	104.0

Source: U.N. Food and Agriculture Organization, *FAOSTAT*, electronic database, available at [faostat.fao.org](http://faostat.fao.org), updated 2 September 2010.

# Grazing Livestock in Nigeria, 1961-2008



### Grazing Livestock in Pakistan, 1961-2009

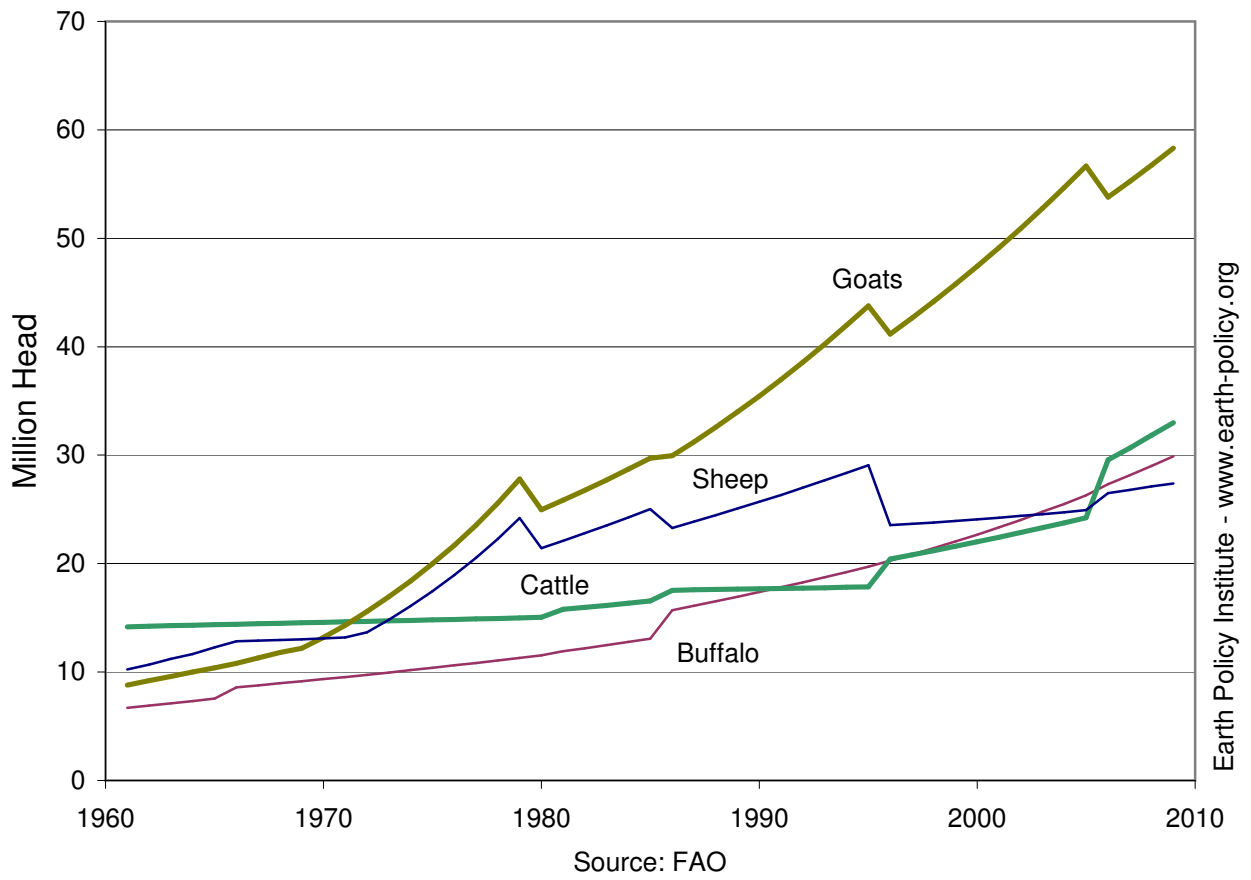
Year	Buffalo	Cattle	Goats	Sheep	Total
	Million Head				
1961	6.7	14.2	8.8	10.2	39.9
1962	6.9	14.2	9.2	10.7	41.0
1963	7.1	14.3	9.6	11.2	42.2
1964	7.3	14.3	10.0	11.7	43.3
1965	7.6	14.4	10.4	12.3	44.6
1966	8.6	14.4	10.8	12.9	46.6
1967	8.8	14.4	11.3	12.9	47.4
1968	9.0	14.5	11.8	13.0	48.2
1969	9.2	14.5	12.2	13.0	48.9
1970	9.3	14.6	13.2	13.1	50.2
1971	9.5	14.6	14.3	13.2	51.7
1972	9.8	14.7	15.6	13.7	53.7
1973	10.0	14.7	16.9	14.8	56.4
1974	10.2	14.8	18.4	16.1	59.4
1975	10.4	14.8	20.0	17.5	62.6
1976	10.6	14.9	21.7	18.9	66.1
1977	10.8	14.9	23.6	20.5	69.8
1978	11.1	14.9	25.6	22.3	73.9
1979	11.3	15.0	27.8	24.2	78.3
1980	11.5	15.0	25.0	21.4	73.0
1981	11.9	15.8	25.8	22.1	75.6
1982	12.2	16.0	26.8	22.8	77.7
1983	12.5	16.2	27.7	23.5	79.9
1984	12.8	16.4	28.7	24.3	82.1
1985	13.1	16.5	29.7	25.0	84.4
1986	15.7	17.5	29.9	23.3	86.5
1987	16.1	17.6	31.2	23.9	88.8
1988	16.5	17.6	32.6	24.5	91.2
1989	16.9	17.6	34.0	25.1	93.6
1990	17.4	17.7	35.4	25.7	96.2
1991	17.8	17.7	37.0	26.3	98.8
1992	18.3	17.7	38.6	27.0	101.6
1993	18.7	17.8	40.2	27.7	104.4
1994	19.2	17.8	42.0	28.4	107.3
1995	19.7	17.8	43.8	29.1	110.4
1996	20.3	20.4	41.2	23.5	105.4
1997	20.8	20.8	42.7	23.7	108.0
1998	21.4	21.2	44.2	23.8	110.6
1999	22.0	21.6	45.8	23.9	113.3
2000	22.7	22.0	47.4	24.1	116.2
2001	23.3	22.4	49.1	24.2	119.1
2002	24.0	22.9	50.9	24.4	122.2
2003	24.8	23.3	52.8	24.6	125.4
2004	25.5	23.8	54.7	24.7	128.7
2005	26.3	24.2	56.7	24.9	132.1
2006	27.3	29.6	53.8	26.5	137.2
2007	28.2	30.7	55.2	26.8	140.9
2008	29.0	31.8	56.7	27.1	144.7
2009	29.9	33.0	58.3	27.4	148.6

Source: U.N. Food and Agriculture Organization, *FAOSTAT*, electronic database, available at [faostat.fao.org](http://faostat.fao.org), updated 2 September 2010.

This is part of a supporting dataset for Lester R. Brown, **World on the Edge: How to Prevent Environmental and Economic Collapse** (New York: W.W. Norton & Company, 2011). For more information and a free download of the book, see Earth Policy Institute on-line at [www.earth-policy.org](http://www.earth-policy.org).



# Grazing Livestock in Pakistan, 1961-2009



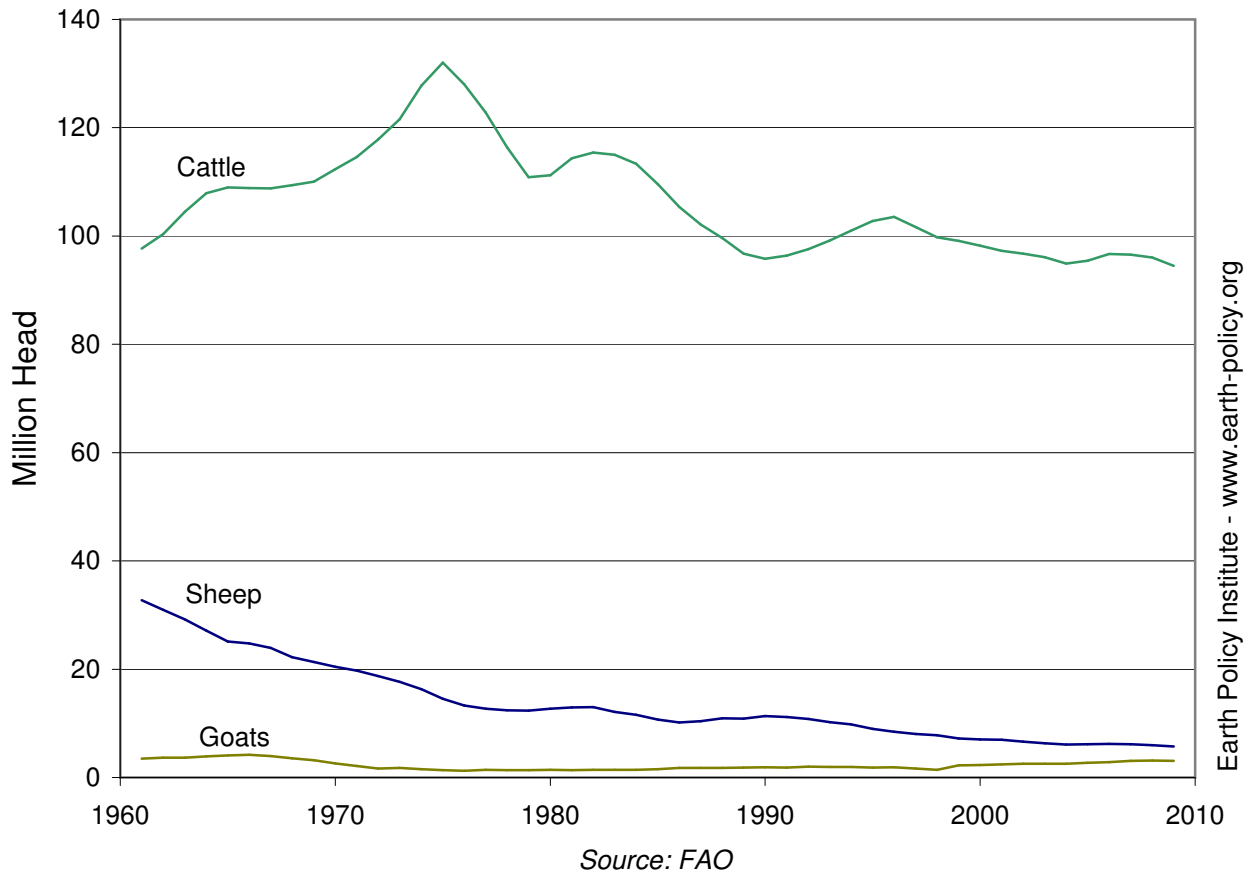
### Grazing Livestock in the United States, 1961-2009

Year	Cattle	Goats	Sheep	Total
	Million Head			
1961	97.7	3.5	32.7	133.9
1962	100.4	3.6	31.0	135.0
1963	104.5	3.7	29.2	137.3
1964	107.9	3.9	27.1	138.9
1965	109.0	4.1	25.1	138.2
1966	108.9	4.2	24.7	137.8
1967	108.8	4.0	24.0	136.7
1968	109.4	3.6	22.2	135.2
1969	110.0	3.2	21.4	134.6
1970	112.4	2.6	20.4	135.4
1971	114.6	2.1	19.7	136.4
1972	117.9	1.7	18.7	138.3
1973	121.5	1.8	17.6	141.0
1974	127.8	1.6	16.3	145.7
1975	132.0	1.4	14.5	147.9
1976	128.0	1.3	13.3	142.6
1977	122.8	1.4	12.7	136.9
1978	116.4	1.4	12.4	130.2
1979	110.9	1.4	12.4	124.6
1980	111.2	1.4	12.7	125.3
1981	114.4	1.4	12.9	128.7
1982	115.4	1.4	13.0	129.9
1983	115.0	1.4	12.1	128.6
1984	113.4	1.4	11.6	126.3
1985	109.6	1.6	10.7	121.8
1986	105.4	1.8	10.1	117.3
1987	102.1	1.8	10.4	114.3
1988	99.6	1.8	10.9	112.4
1989	96.7	1.9	10.9	109.4
1990	95.8	1.9	11.4	109.1
1991	96.4	1.8	11.2	109.4
1992	97.6	2.0	10.8	110.4
1993	99.2	2.0	10.2	111.3
1994	101.0	2.0	9.8	112.8
1995	102.8	1.9	9.0	113.6
1996	103.5	1.9	8.5	113.9
1997	101.7	1.7	8.0	111.3
1998	99.7	1.4	7.8	109.0
1999	99.1	2.3	7.2	108.6
2000	98.2	2.3	7.0	107.5
2001	97.3	2.4	7.0	106.6
2002	96.7	2.5	6.6	105.9
2003	96.1	2.5	6.3	105.0
2004	94.9	2.5	6.1	103.5
2005	95.4	2.7	6.1	104.3
2006	96.7	2.8	6.2	105.8
2007	96.6	3.0	6.1	105.7
2008	96.0	3.1	6.0	105.1
2009	94.5	3.1	5.7	103.3

Source: U.N. Food and Agriculture Organization, *FAOSTAT*, electronic database, available at [faostat.fao.org](http://faostat.fao.org), updated 2 September 2010.

This is part of a supporting dataset for Lester R. Brown, **World on the Edge: How to Prevent Environmental and Economic Collapse** (New York: W.W. Norton & Company, 2011). For more information and a free download of the book, see Earth Policy Institute on-line at [www.earth-policy.org](http://www.earth-policy.org).

## Grazing Livestock in the United States, 1961-2009

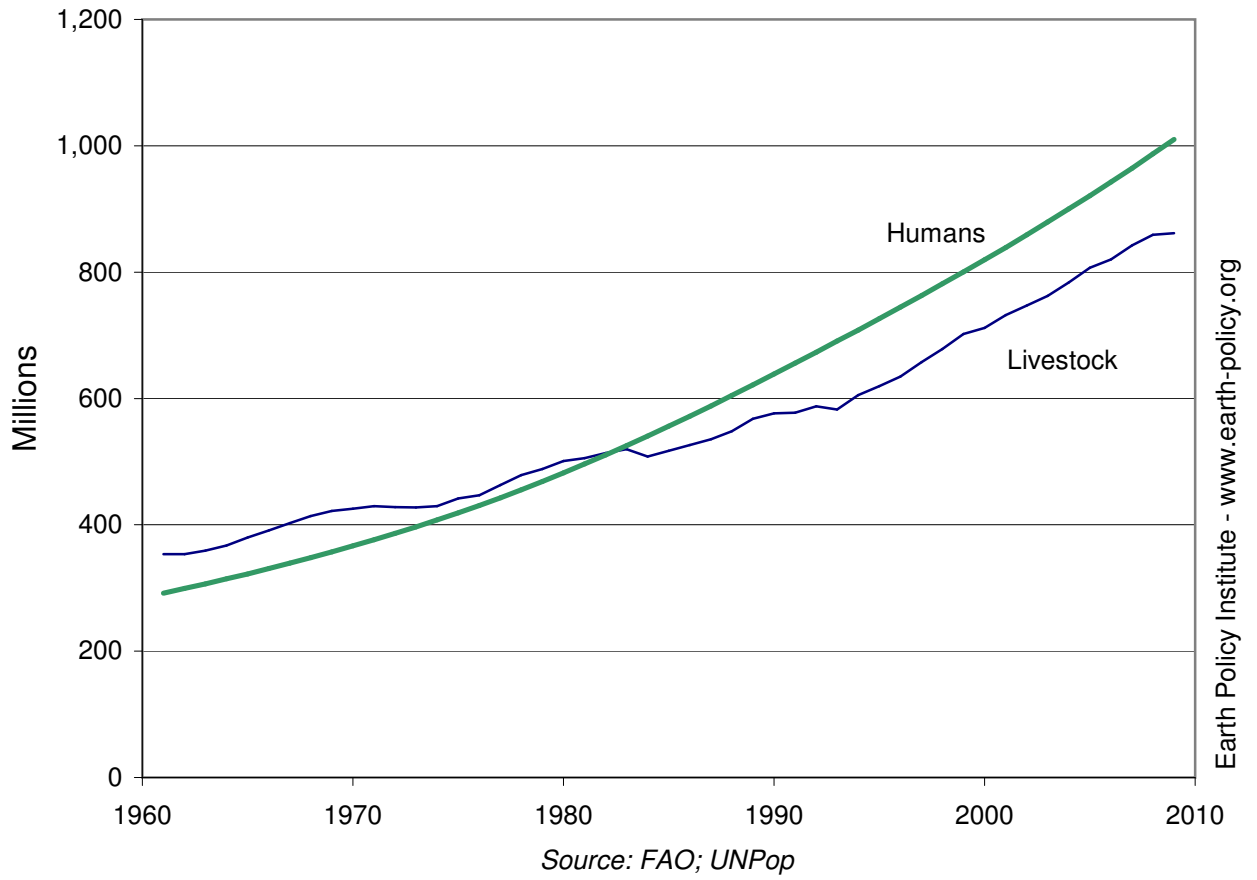


## Livestock and Human Populations in Africa, 1961-2008

Year	Livestock Population Millions	Human Population
1961	353.4	292.0
1962	353.7	299.2
1963	359.1	306.6
1964	367.5	314.3
1965	380.0	322.3
1966	391.2	330.6
1967	402.6	339.2
1968	413.8	348.2
1969	422.1	357.3
1970	425.3	366.8
1971	429.6	376.5
1972	427.8	386.5
1973	427.6	396.8
1974	429.6	407.5
1975	441.8	418.8
1976	446.7	430.5
1977	462.8	442.8
1978	478.8	455.5
1979	488.2	468.7
1980	500.7	482.2
1981	505.4	496.2
1982	513.4	510.6
1983	520.0	525.4
1984	508.0	540.6
1985	517.3	556.1
1986	526.2	572.1
1987	535.2	588.3
1988	548.3	604.9
1989	567.9	621.7
1990	576.6	638.7
1991	577.4	655.9
1992	587.6	673.2
1993	582.4	690.7
1994	605.5	708.4
1995	619.3	726.3
1996	634.8	744.4
1997	657.4	762.7
1998	678.4	781.3
1999	702.0	800.2
2000	711.5	819.5
2001	731.7	839.0
2002	747.2	858.9
2003	762.5	879.2
2004	783.6	899.9
2005	806.7	921.1
2006	820.2	942.7
2007	842.3	964.7
2008	859.0	987.1
2009	861.7	1,009.9

Source: Compiled by Earth Policy Institute with livestock population from U.N. Food and Agriculture Organization, *FAOSTAT*, electronic database, available at [faostat.fao.org](http://faostat.fao.org), updated 2 September 2010; human population from U.N. Population Division, *World Population Prospects: The 2008 Revision Population Database*, at [esa.un.org/unpp](http://esa.un.org/unpp), updated 11 March 2009.

# Livestock and Human Populations in Africa, 1961-2008



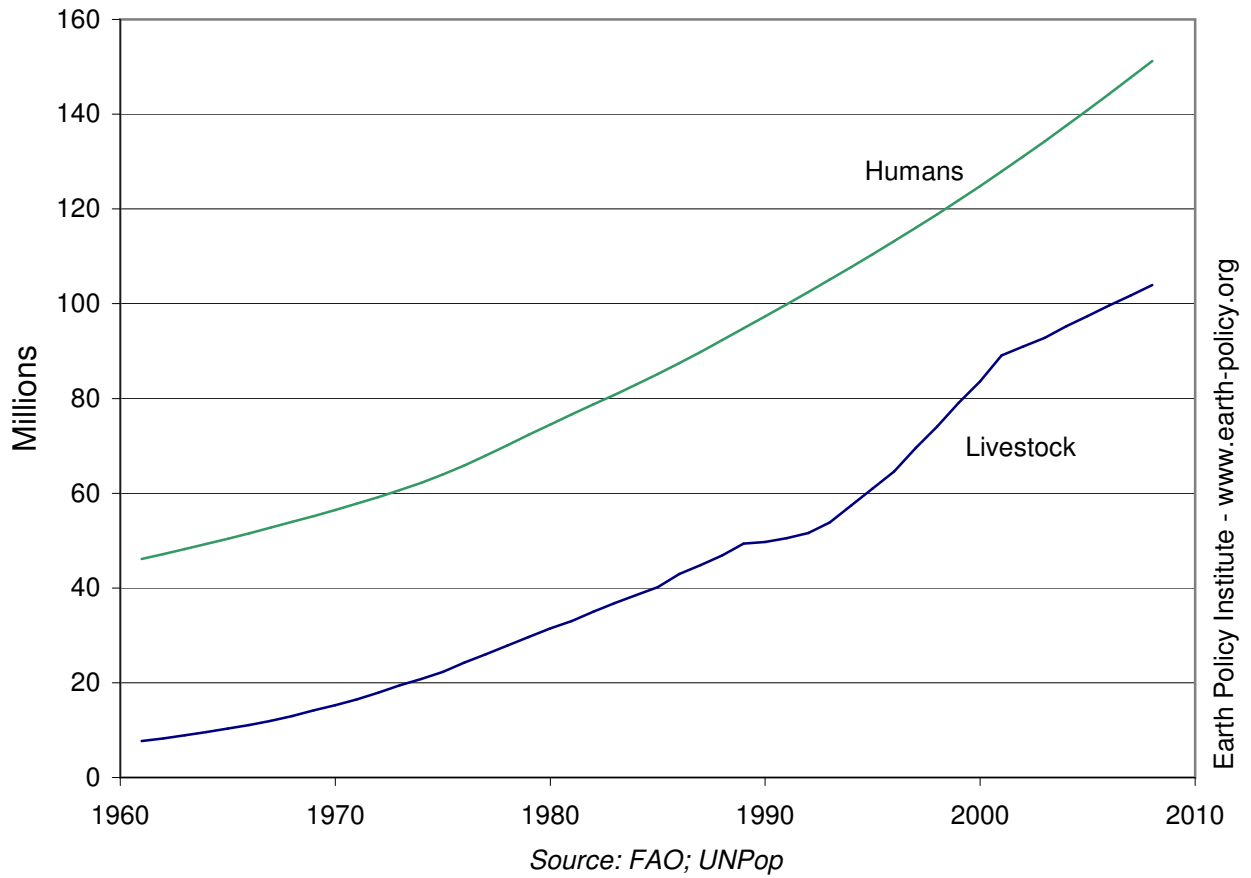
### Livestock and Human Populations in Nigeria, 1961-2008

Year	Livestock Population Millions	Human Population
1961	7.7	46.1
1962	8.2	47.2
1963	8.9	48.2
1964	9.6	49.3
1965	10.3	50.4
1966	11.1	51.6
1967	12.0	52.7
1968	13.0	53.9
1969	14.2	55.2
1970	15.3	56.5
1971	16.5	57.8
1972	17.9	59.2
1973	19.4	60.6
1974	20.8	62.2
1975	22.3	63.9
1976	24.3	65.9
1977	26.0	68.0
1978	27.8	70.1
1979	29.7	72.3
1980	31.5	74.5
1981	33.0	76.6
1982	35.0	78.7
1983	36.8	80.8
1984	38.5	82.9
1985	40.2	85.2
1986	43.0	87.5
1987	44.9	89.9
1988	46.9	92.3
1989	49.4	94.8
1990	49.7	97.3
1991	50.5	99.9
1992	51.6	102.5
1993	53.8	105.1
1994	57.4	107.7
1995	61.0	110.4
1996	64.6	113.2
1997	69.6	116.0
1998	74.1	118.9
1999	79.1	121.8
2000	83.6	124.8
2001	89.1	127.9
2002	90.9	131.1
2003	92.8	134.3
2004	95.2	137.5
2005	97.4	140.9
2006	99.6	144.3
2007	101.7	147.7
2008	104.0	151.2

Source: Compiled by Earth Policy Institute with livestock population from U.N. Food and Agriculture Organization, *FAOSTAT*, electronic database, available at [faostat.fao.org](http://faostat.fao.org), updated 2 September 2010; human population from U.N. Population Division, *World Population Prospects: The 2008 Revision Population Database*, at [esa.un.org/unpp](http://esa.un.org/unpp), updated 11 March 2009.

This is part of a supporting dataset for Lester R. Brown, **World on the Edge: How to Prevent Environmental and Economic Collapse** (New York: W.W. Norton & Company, 2011). For more information and a free download of the book, see Earth Policy Institute on-line at [www.earth-policy.org](http://www.earth-policy.org).

## Livestock and Human Populations in Nigeria, 1961-2008



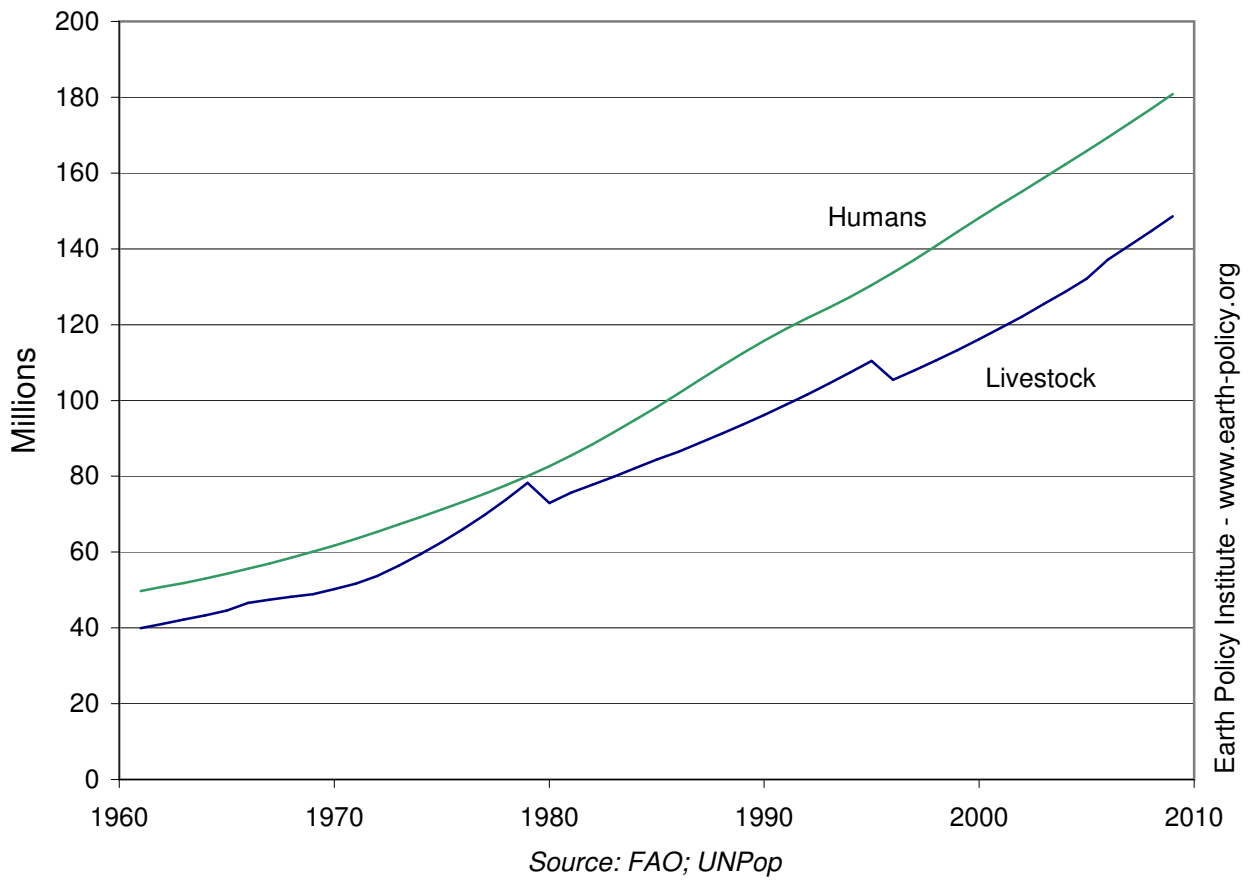
### Livestock and Human Populations in Pakistan, 1961-2008

Year	Livestock Population Millions	Human Population
1961	39.9	49.8
1962	41.0	50.8
1963	42.2	51.9
1964	43.3	53.0
1965	44.6	54.3
1966	46.6	55.6
1967	47.4	57.0
1968	48.2	58.5
1969	48.9	60.1
1970	50.2	61.8
1971	51.7	63.5
1972	53.7	65.3
1973	56.4	67.2
1974	59.4	69.2
1975	62.6	71.2
1976	66.1	73.3
1977	69.8	75.4
1978	73.9	77.6
1979	78.3	80.0
1980	73.0	82.6
1981	75.6	85.4
1982	77.7	88.4
1983	79.9	91.6
1984	82.1	94.9
1985	84.4	98.3
1986	86.5	101.8
1987	88.8	105.4
1988	91.2	109.0
1989	93.6	112.5
1990	96.2	115.8
1991	98.8	118.8
1992	101.6	121.7
1993	104.4	124.5
1994	107.3	127.3
1995	110.4	130.4
1996	105.4	133.7
1997	108.0	137.2
1998	110.6	140.8
1999	113.3	144.5
2000	116.2	148.1
2001	119.1	151.7
2002	122.2	155.2
2003	125.4	158.7
2004	128.7	162.2
2005	132.1	165.8
2006	137.2	169.5
2007	140.9	173.2
2008	144.7	177.0
2009	148.6	180.8

Source: Compiled by Earth Policy Institute with livestock population from U.N. Food and Agriculture Organization, *FAOSTAT*, electronic database, available at [faostat.fao.org](http://faostat.fao.org), updated 2 September 2010; human population from U.N. Population Division, *World Population Prospects: The 2008 Revision Population Database*, at [esa.un.org/unpp](http://esa.un.org/unpp), updated 11 March 2009.



## Livestock and Human Populations in Pakistan, 1961-2008



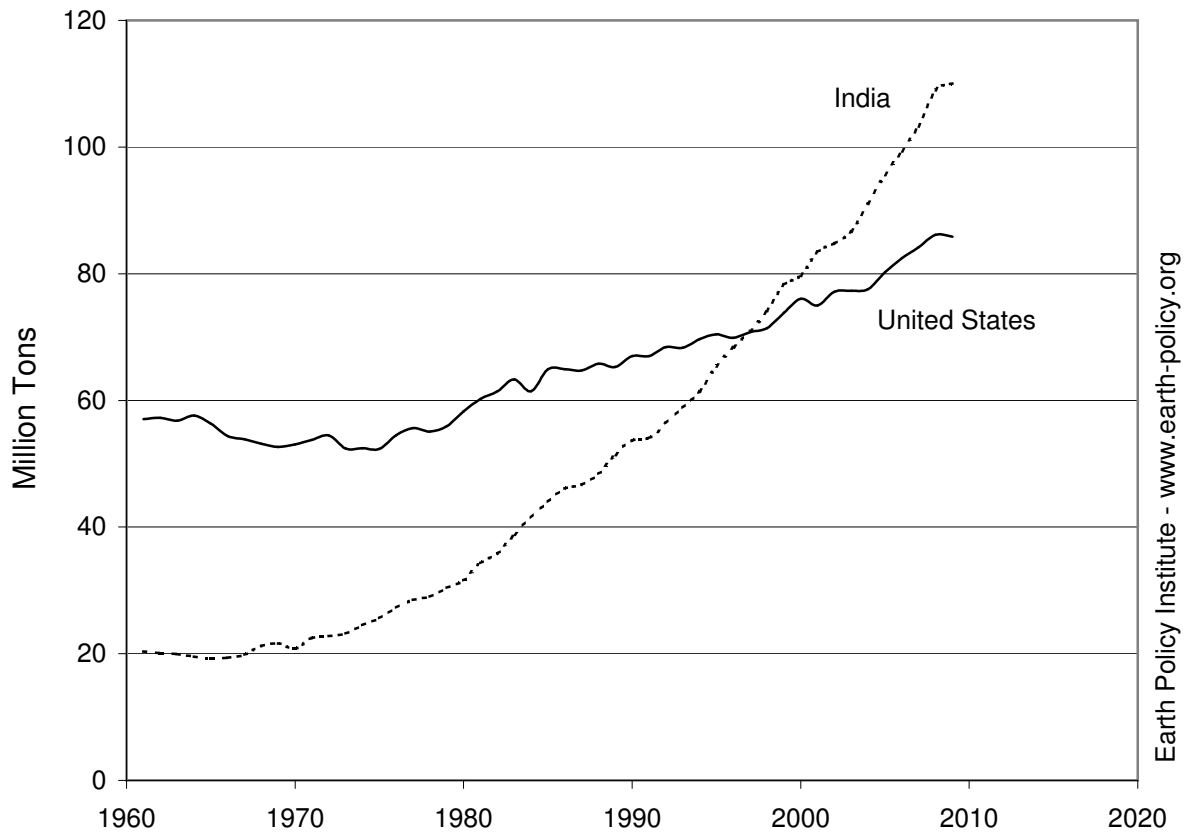
### Milk Production in India and the United States, 1961-2009

Year	India	United States
	Million Tons	
1961	20.4	57.0
1962	20.1	57.3
1963	19.9	56.8
1964	19.5	57.6
1965	19.2	56.3
1966	19.4	54.4
1967	19.9	53.9
1968	21.2	53.2
1969	21.6	52.7
1970	20.8	53.1
1971	22.5	53.8
1972	22.8	54.4
1973	23.2	52.4
1974	24.5	52.4
1975	25.6	52.3
1976	27.3	54.5
1977	28.5	55.6
1978	29.0	55.1
1979	30.4	56.0
1980	31.6	58.2
1981	34.3	60.2
1982	35.8	61.5
1983	38.8	63.3
1984	41.5	61.4
1985	44.0	64.9
1986	46.1	64.9
1987	46.7	64.7
1988	48.4	65.8
1989	51.4	65.3
1990	53.7	67.0
1991	54.1	67.0
1992	56.4	68.4
1993	58.9	68.3
1994	61.4	69.7
1995	65.4	70.4
1996	68.4	69.9
1997	70.9	70.8
1998	74.1	71.4
1999	78.2	73.8
2000	79.7	76.0
2001	83.4	75.0
2002	84.8	77.1
2003	86.7	77.3
2004	91.1	77.5
2005	95.6	80.3
2006	99.3	82.5
2007	103.3	84.2
2008	109.0	86.2
2009	110.0	85.9

Source: U.N. Food and Agriculture Organization, *ProdSTAT*, electronic database, at [faostat.fao.org](http://faostat.fao.org), updated September 2010.

This is part of a supporting dataset for Lester R. Brown, **World on the Edge: How to Prevent Environmental and Economic Collapse** (New York: W.W. Norton & Company, 2011). For more information and a free download of the book, see Earth Policy Institute on-line at [www.earth-policy.org](http://www.earth-policy.org).

## Milk Production in India and the United States, 1961-2009



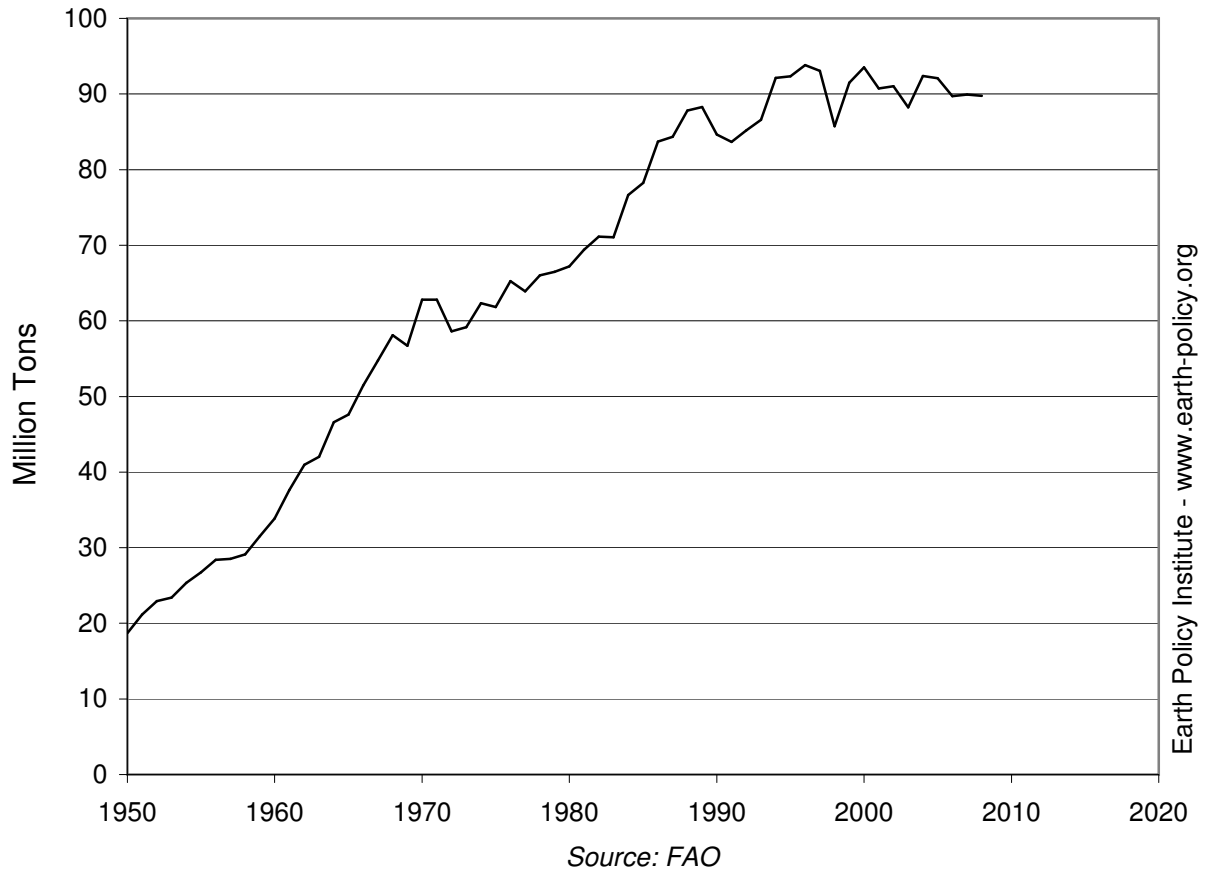
Source: FAO

**World Total and Per Person Wild Fish Harvest, 1950-2008**

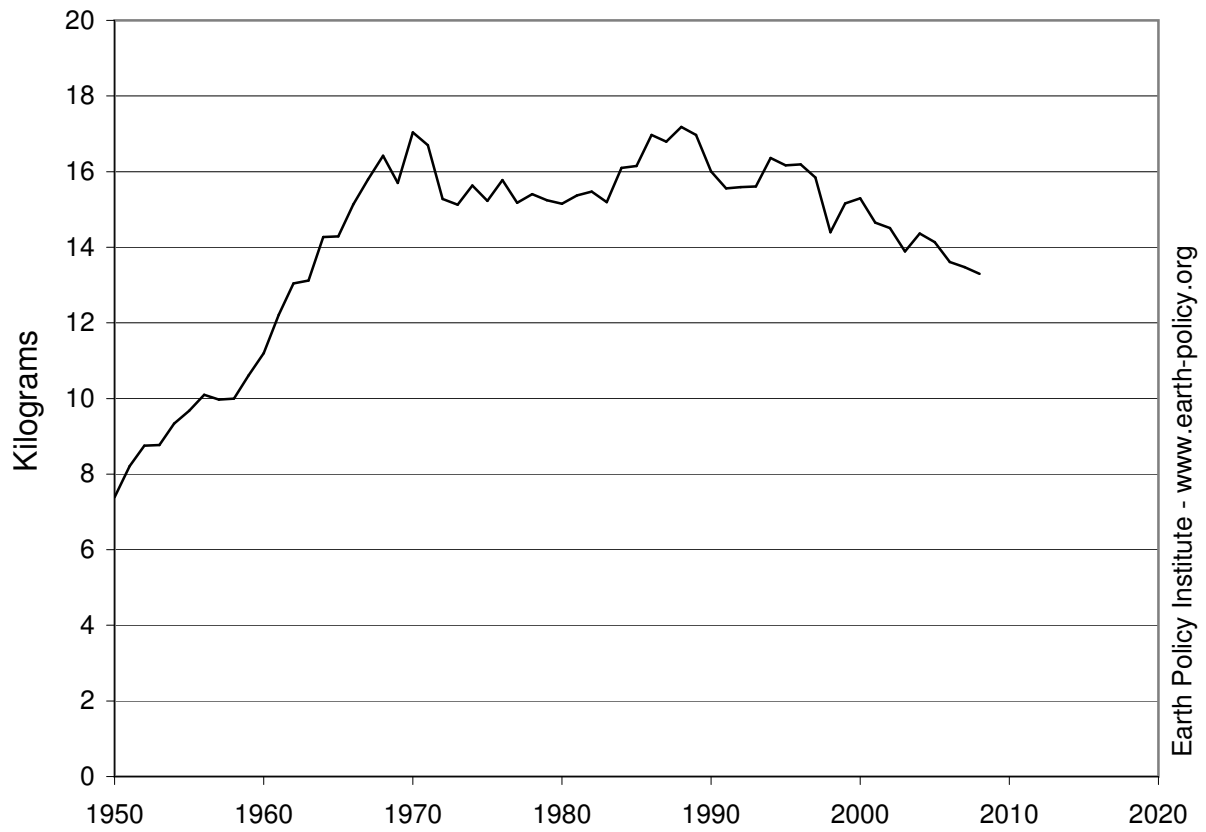
Year	Harvest Million Tons	Harvest Per Person Kilograms
1950	18.7	7.4
1951	21.2	8.2
1952	22.9	8.8
1953	23.4	8.8
1954	25.3	9.3
1955	26.7	9.7
1956	28.4	10.1
1957	28.5	10.0
1958	29.1	10.0
1959	31.5	10.6
1960	33.8	11.2
1961	37.6	12.2
1962	41.0	13.0
1963	42.0	13.1
1964	46.6	14.3
1965	47.6	14.3
1966	51.5	15.1
1967	54.8	15.8
1968	58.1	16.4
1969	56.7	15.7
1970	62.8	17.0
1971	62.8	16.7
1972	58.6	15.3
1973	59.1	15.1
1974	62.3	15.6
1975	61.8	15.2
1976	65.2	15.8
1977	63.9	15.2
1978	66.0	15.4
1979	66.5	15.2
1980	67.2	15.1
1981	69.4	15.4
1982	71.1	15.5
1983	71.1	15.2
1984	76.7	16.1
1985	78.2	16.1
1986	83.7	17.0
1987	84.4	16.8
1988	87.8	17.2
1989	88.3	17.0
1990	84.7	16.0
1991	83.7	15.6
1992	85.2	15.6
1993	86.6	15.6
1994	92.1	16.4
1995	92.3	16.2
1996	93.8	16.2
1997	93.1	15.8
1998	85.7	14.4
1999	91.5	15.2
2000	93.5	15.3
2001	90.8	14.6
2002	91.0	14.5
2003	88.3	13.9
2004	92.4	14.4
2005	92.1	14.1
2006	89.7	13.6
2007	89.9	13.5
2008	89.8	13.3

Source: Compiled by Earth Policy Institute from U.N. Food and Agriculture Organization, *FISHSTAT Plus*, electronic database, at [www.fao.org/fishery/statistics/software/fishstat](http://www.fao.org/fishery/statistics/software/fishstat), updated March 2010; U.N. Population Division, *World Population Prospects: The 2008 Revision Population Database*, electronic database, at [esa.un.org/unpp](http://esa.un.org/unpp), updated 11 March 2009.

# World Total Wild Fish Harvest, 1950-2008



# World Wild Fish Catch Per Person, 1950-2008



Source: EPI from FAO

Earth Policy Institute - [www.earth-policy.org](http://www.earth-policy.org)

### Marine Protected Area in Top 15 Countries, 2009

Country	Marine Area Protected	
	Square Kilometers	Percent of Territorial Waters
Australia	264,359	28.3
United States	227,839	24.7
Ecuador	139,557	13.0
Russia	119,742	9.1
Greenland	99,737	36.5
Indonesia	64,325	1.9
Brazil	51,015	20.1
Mexico	49,123	16.7
Canada	33,160	1.2
Italy	25,932	16.7
Japan	21,535	5.6
Philippines	18,922	1.5
Kiribati	15,618	20.2
Venezuela	14,399	15.3
New Zealand	12,802	7.1

Source: Compiled by Earth Policy Institute from U.N. Statistics Division and U.N. Department of Social and Economic Affairs, *Millennium Development Goals Indicators*, electronic database, at [mdgs.un.org](http://mdgs.un.org), updated 23 June 2010.

This is part of a supporting dataset for Lester R. Brown, **World on the Edge: How to Prevent Environmental and Economic Collapse** (New York: W.W. Norton & Company, 2011). For more information and a free download of the book, see Earth Policy Institute on-line at [www.earth-policy.org](http://www.earth-policy.org).